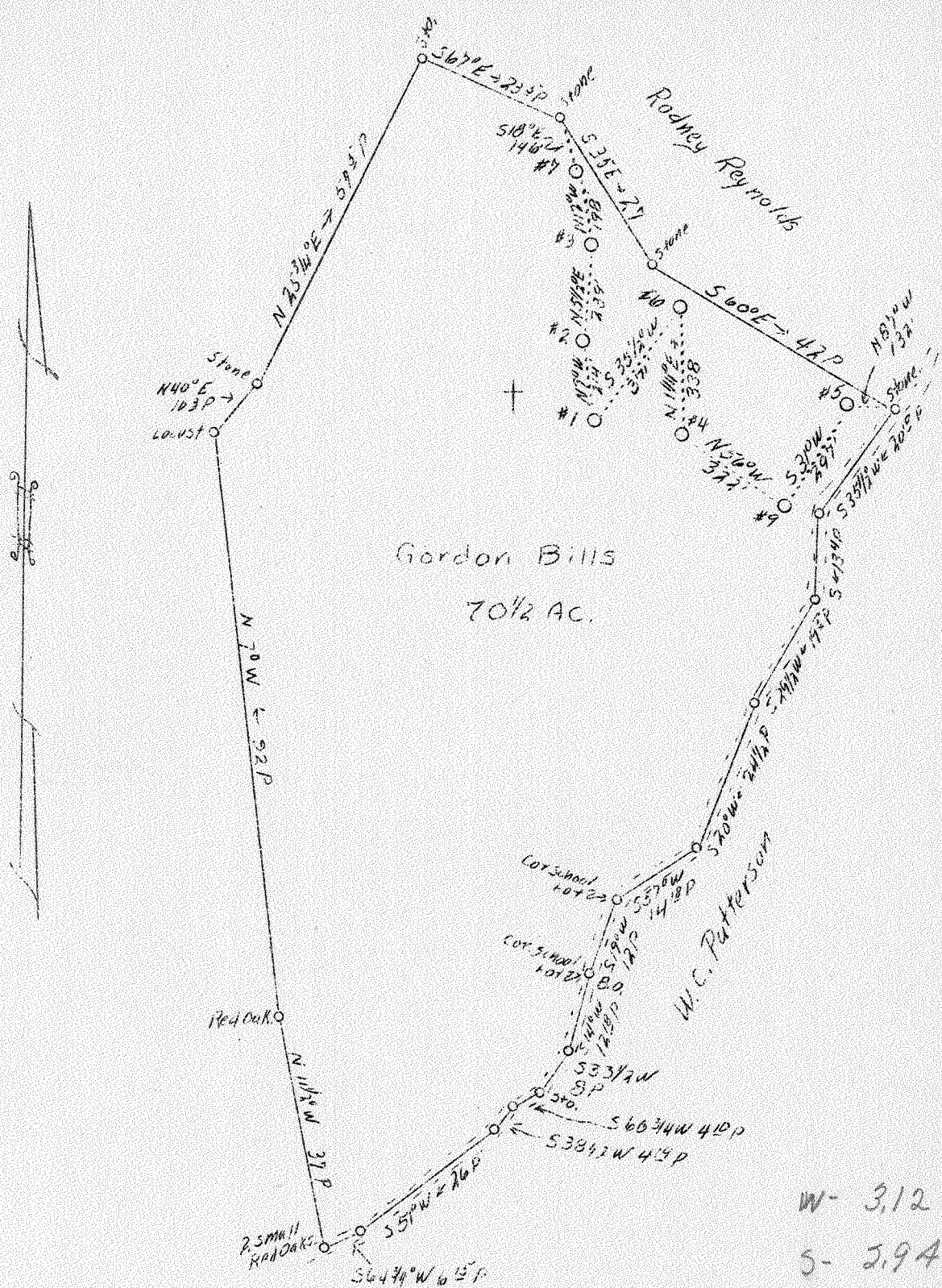


LATITUDE 39° 25'

LONGITUDE 81° 10'



ABD. Well #9

Company	Patterson Oil & Gas Co.
Address	Jamestown, N.Y.
Farm	Gordon Bills
Acres	70 1/2
Well (Farm) No.	1 - 7 & 9
Quadrangle	St. Marys
County	Pleasants
District	Washington
Eng.	Parker E. Peters
Eng. Reg. No.	485
Date	12/14/38
Scale	1" - 400'

STATE OF WEST VIRGINIA
 Department of Mines
 OIL AND GAS DIVISION
 Charleston

WELL LOCATION MAP
 File No. Pleas-119-A

x Denotes location of well on U.S. Topographic Maps, scale 1 to 62,500, latitude and longitude lines being represented by border lines as shown.
 - Denotes one inch spaces on border line of original tracing.