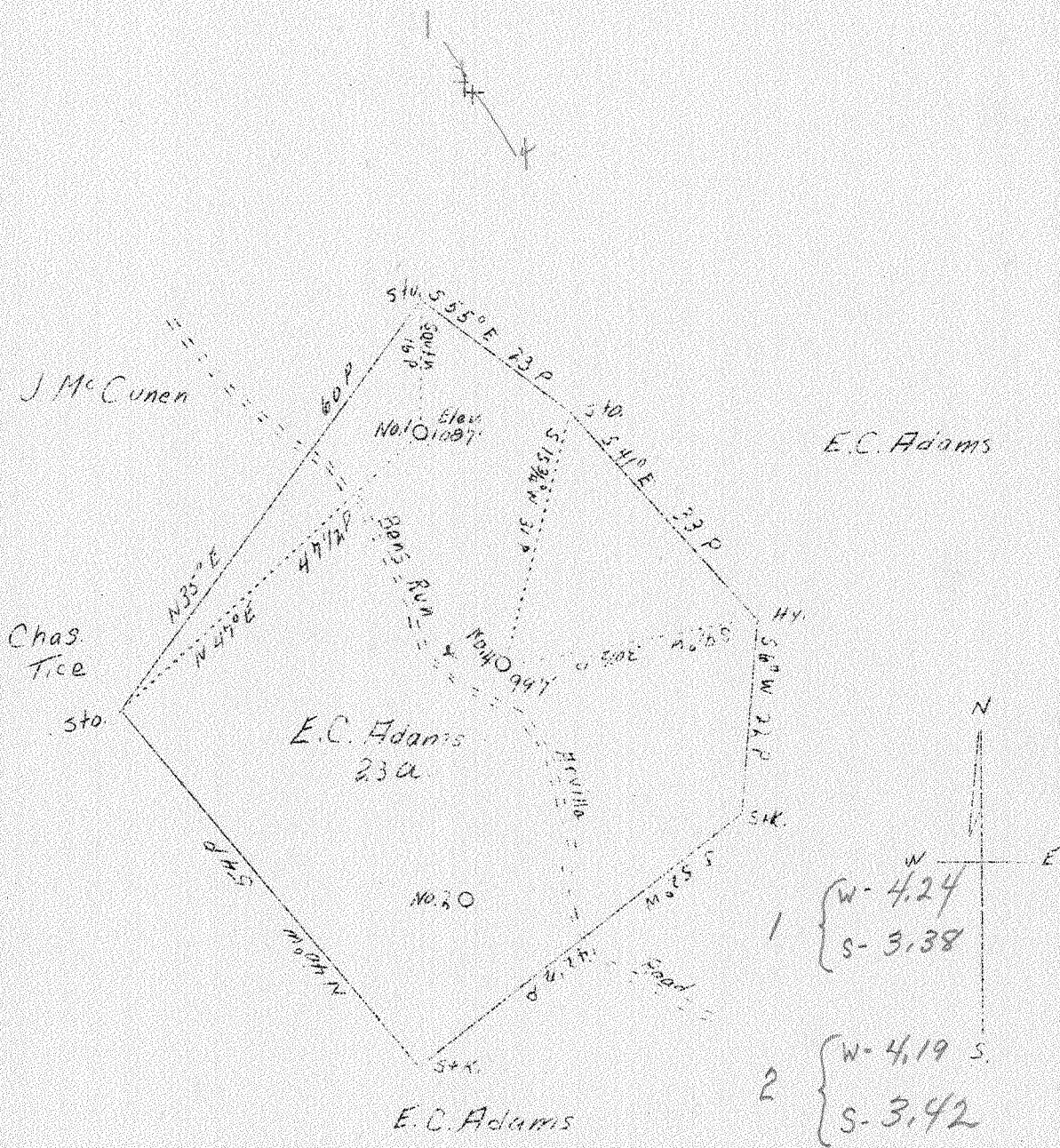


LATITUDE 39° 30'

LONGITUDE 81° 00'



Company	Umby Oil & Gas Co.
Address	Sistersville, W. Va.
Farm	E. C. Adams
Acres	23
Well (Farm) Nos.	1 and 4
Elevation (SL)	#1 1088' - #4 997'
Quadrangle	St. Marys, W. Va. <i>N.E.</i>
County	Pleasants
District	Union
Engineer	Jno. Triplett
Eng. Reg. No.	-
Date	Feb. 12 (?)
Scale	20 poles to 1"

STATE OF WEST VIRGINIA
 Department of Mines
 OIL & GAS DIVISION
 Charleston

WELL LOCATION MAP

File No. Pleas-1174118#
 174

x Denotes location of well on U. S. Topographic Maps, scale 1 to 62,500, latitude and longitude lines being represented by border lines as shown.

- Denotes one inch spaces on border line of original tracing.