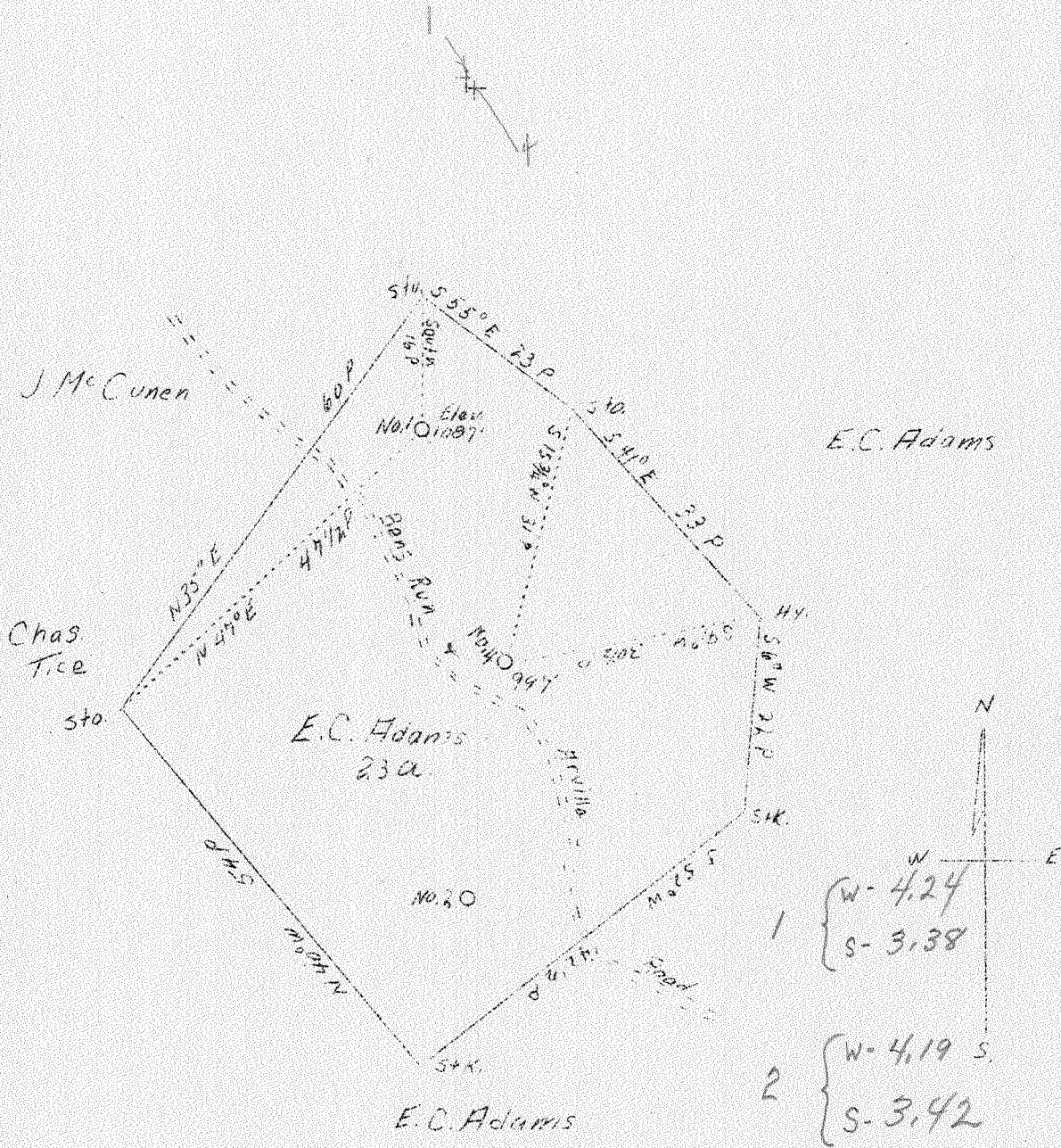


LATITUDE 39° 30'

LONGITUDE 81° 00'



1 { W-4.24  
S-3.38

2 { W-4.19 S  
S-3.42

Company Umphy Oil & Gas Co.  
 Address Sistersville, W. Va.  
 Farm E. C. Adams  
 Acres 23  
 Well (Farm) Nos. 1 and 4  
 Elevation (SL) #1 1088' - #4 997'  
 Quadrangle St. Marys, W. Va. *N.E.*  
 County Pleasants  
 District Union  
 Engineer Jno. Triplett  
 Eng. Reg. No. -  
 Date Feb. 12 (?)  
 Scale 20 poles to 1"

STATE OF WEST VIRGINIA  
 Department of Mines  
 OIL & GAS DIVISION  
 Charleston

WELL LOCATION MAP  
 File No. Pleas-1174118#  
 174

x Denotes location of well on U. S. Topographic Maps, scale 1 to 62,500, latitude and longitude lines being represented by border lines as shown.

- Denotes one inch spaces on border line of original tracing.