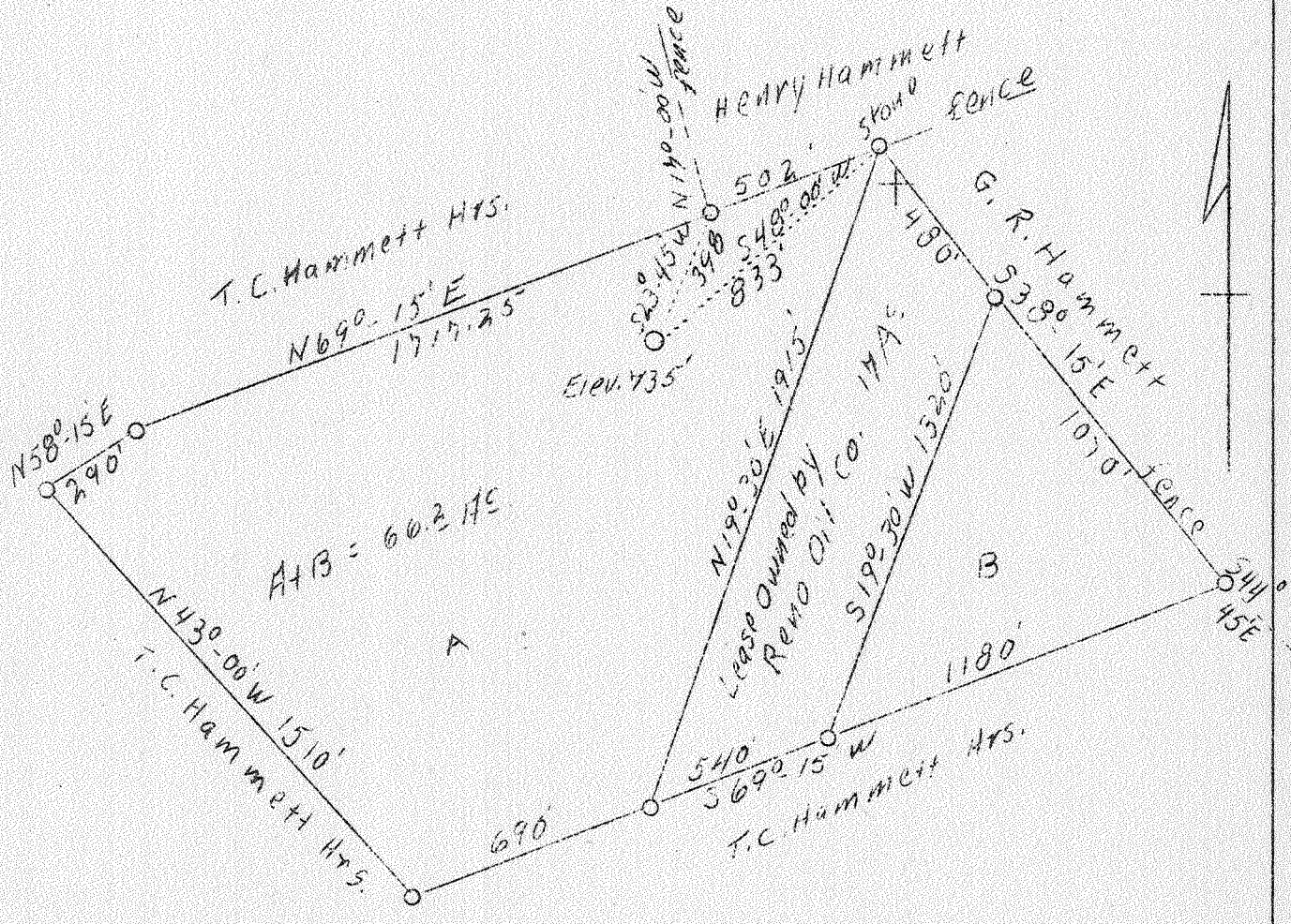


LATITUDE 39° 25'

LONGITUDE 81° 00'



A+B = 60.2 AC

ABD.

Company	Howard McAtee
Address	Williamstown, W.Va.
Farm	T.C. Hammett Hrs.
Acres	66 <u>2</u>
Well (Farm) No.	2
El. (Spirit Level)	735 U.S.G.S. Datum
Quadrangle	Marietta <i>EC</i>
County	Pleasants
District	Grant
Eng.	George R. Clarke
Eng. Reg. No.	102
Date	10/4/38
Scale	1" = 500'

STATE OF WEST VIRGINIA
 Department of Mines
 OIL AND GAS DIVISION
 Charleston

WELL LOCATION MAP

File No. P1105-115-A

x Denotes location of well on U.S. Topographic Maps, scale 1 to 62,500, latitude and longitude lines being represented by border lines as shown.

- Denoted one inch spaces on border line of original tracing.