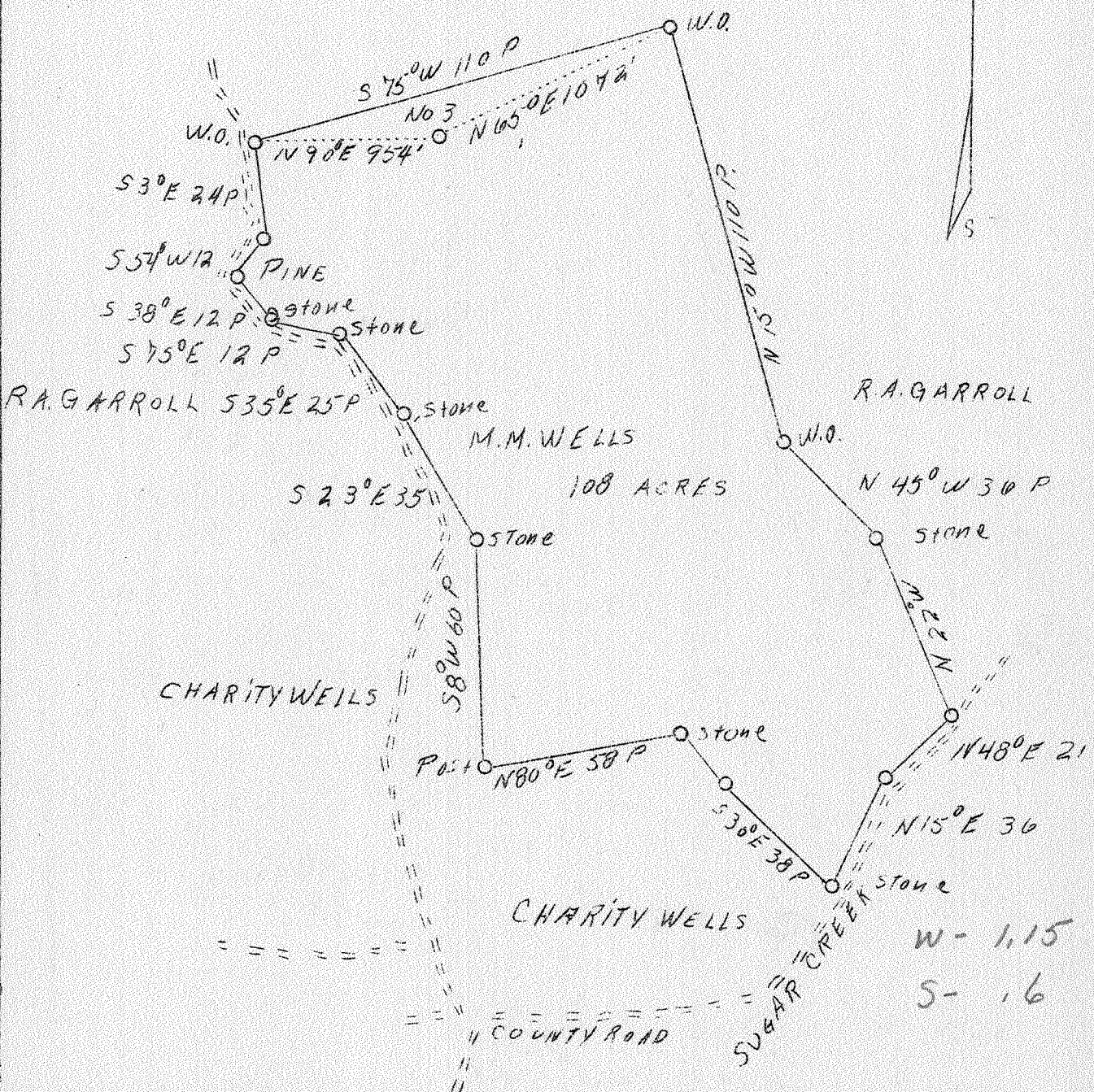


LATITUDE 39° 25'

LONGITUDE 81° 00'



Company	Casto Oil Company
Address	Charleston, W. Va.
Farm	M. M. Wells
Tract	5
Acres	108
Well (Farm) No.	Three
Elevation (SL)	850
Quadrangle	St. Marys E.
County	Pleasants
District	Union
Engineer	J. V. Dunbar
Eng. Reg. No.	65
File No.	C-23-L
Date	April 21, 1938
Scale	40 rods to 1"

STATE OF WEST VIRGINIA
 Department of Mines
 OIL & GAS DIVISION
 Charleston

WELL LOCATION MAP

File No. Pleas-114-A

x Denotes location of well on U. S. Topographic Maps, scale 1 to 62,500, latitude and longitude lines being represented by border lines as shown.

- Denotes one inch spaces on border line of original tracing.