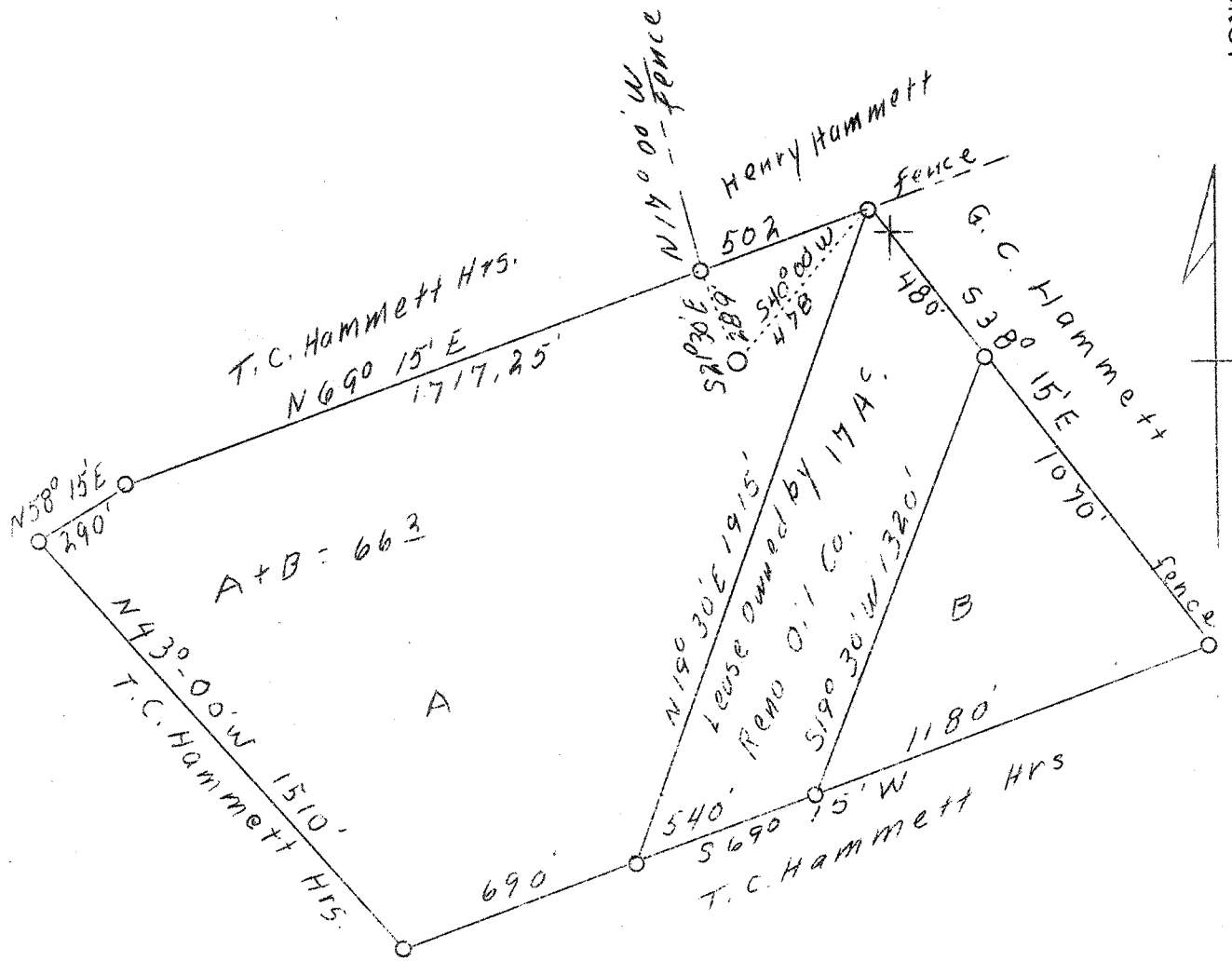


LATITUDE 39° 25'

LONGITUDE 81° 15'



2.08 W  
3.68 S

HBD.

Company	Howard McAfee
Address	Williamstown, W. Va.
Farm	T. C. Hammett Hrs.
Acres	66.2
Well (Farm) No.	-
Elevation (SP)	727 - U.S.G.S. Datum
Quadrangle	Marietta <i>E.C.</i>
County	Pleasants
District	Grant
Engineer	George R. Clarke
Eng. Reg. No.	102
Date	Oct. 4, 1938
Scale	1" - 500'

STATE OF WEST VIRGINIA  
 Department of Mines  
 OIL & GAS DIVISION  
 Charleston

WELL LOCATION MAP

File No. Plea 3-113-A

x Denotes location of well on U. S. Topographic Maps, scale 1 to 62,500, latitude and longitude lines being represented by border lines as shown.

- Denotes one inch spaces on border line of original tracing.