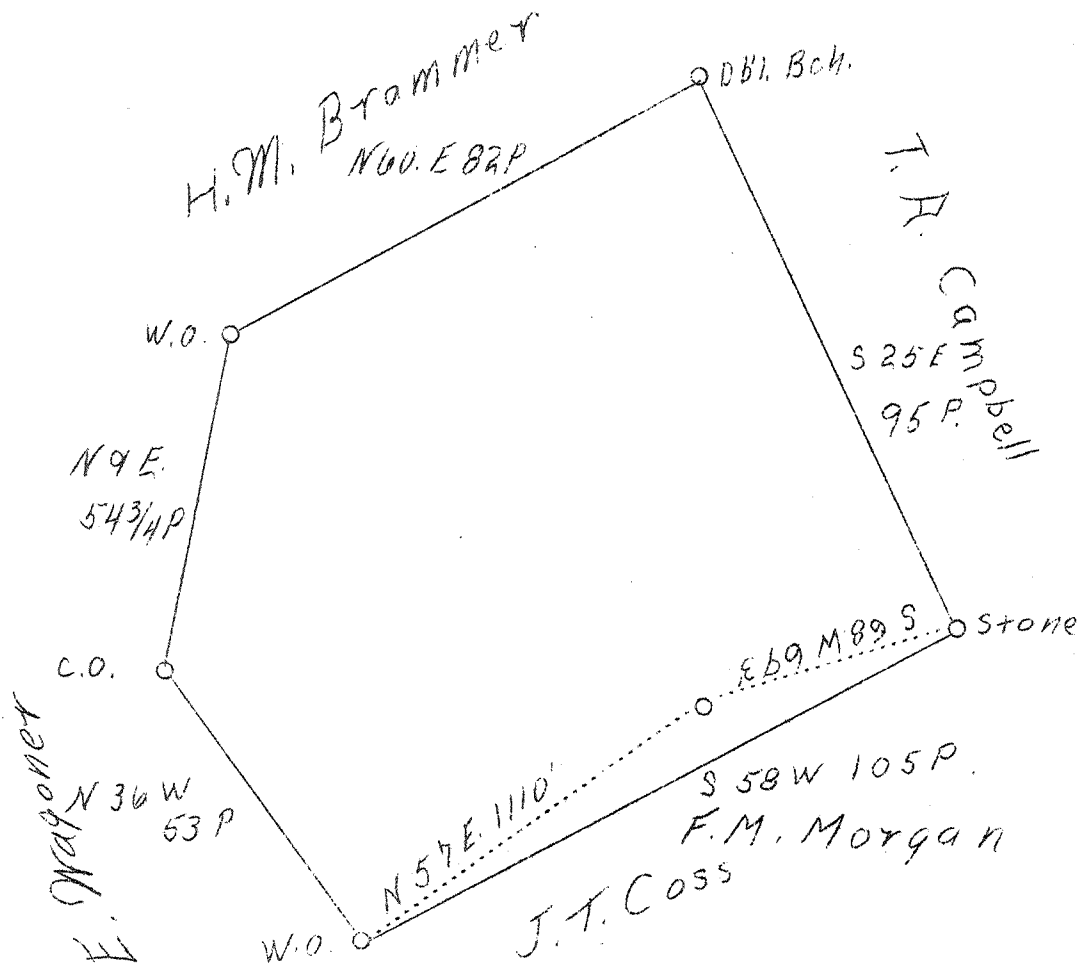


LATITUDE 39° 25'

LONGITUDE 81° 00'



W. 2.6
S. 2.

ABD.

Company	American Oil & Dev. Co.
Address	Sistersville, W. Va.
Farm	H. M. Brammer
Tract	One
Acres	62
Well (Farm) No.	One
Elevation (SP)	1053.7
Quadrangle	St. Marys
County	Pleasants
District	Lafayette
Engineer	J. S. Haught
Eng. Reg. No.	C. S. T. C.
Date	9-21-38
Scale	1" = 30 rods

STATE OF WEST VIRGINIA
Department of Mines
OIL & GAS DIVISION
Charleston

WELL LOCATION MAP

File No. Pleas 110 A

x Denotes location of well on U. S. Topographic Maps, scale 1 to 62,500, latitude and longitude lines being represented by border lines as shown.

- Denotes one inch spaces on border line of original tracing.