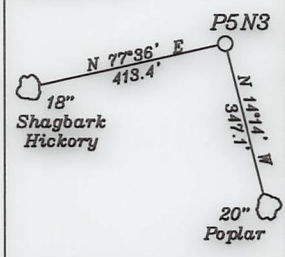


References:



V- Heartwood Forestland Fund IV Limited Partnership  
T.M. 15/3 16.75 Ac. **APC0511C**

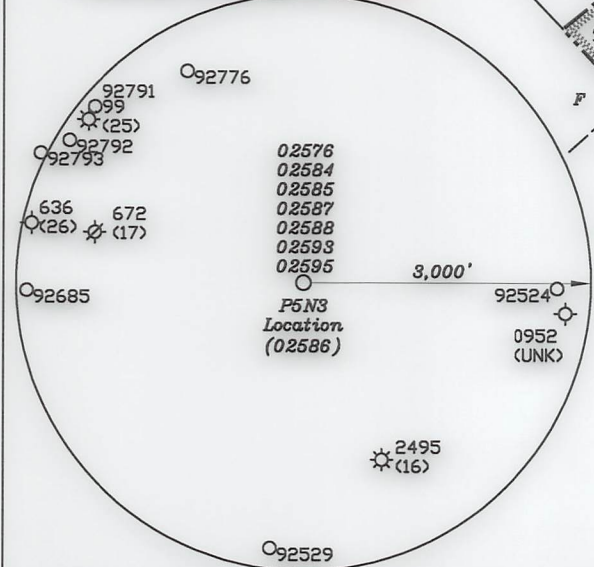
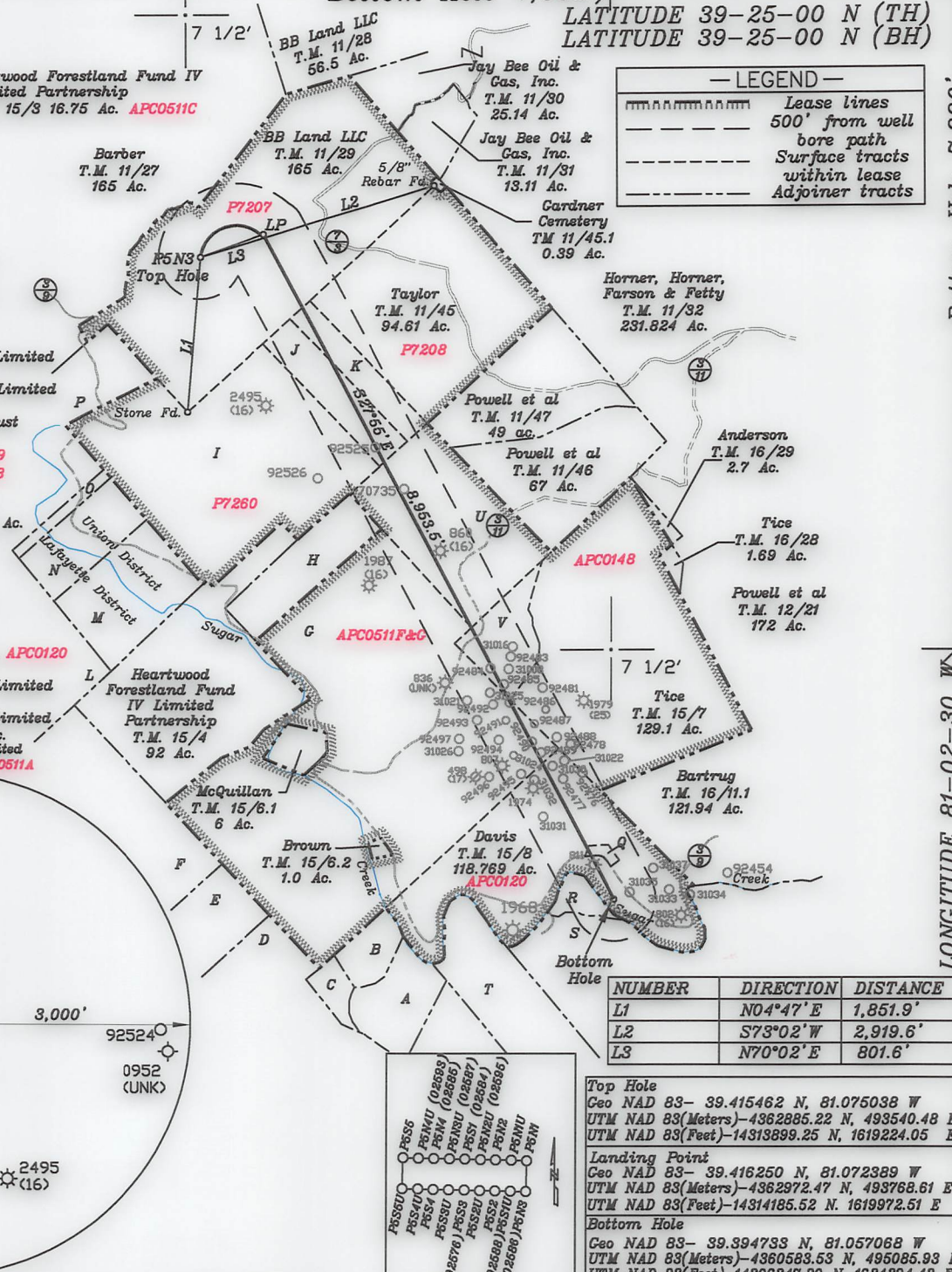
Bottom Hole 4,352'

LATITUDE 39-25-00 N (TH)  
LATITUDE 39-25-00 N (BH)

**— LEGEND —**

	Lease lines
	500' from well bore path
	Surface tracts within lease
	Adjoiner tracts

- A- Napier T.M. 4/28.18 20.524 Ac.
- B- Napier T.M. 4/28.17 17.164 Ac.
- C- Winland T.M. 4/28.18 8.076 Ac.
- D- Hooper T.M. 4/25 23.066 Ac.
- E- Cumr T.M. 4/24 51.0 Ac.
- F- Fleming T.M. 4/15 87.5 Ac.
- G- Heartwood Forestland Fund IV Limited Partnership T.M. 15/6 266 Ac.
- H- Heartwood Forestland Fund IV Limited Partnership T.M. 15/5 50 Ac.
- I- Melanie Jo Manuse Revocable Trust T.M. 11/41 123.27 Ac.
- J- Taylor T.M. 11/44 25.8 Ac. **P7259**
- K- Taylor T.M. 11/43 18.6 Ac. **P7258**
- L- Hall T.M. 4/7 39.5 Ac.
- M- Heartwood Forestland Fund IV Limited Partnership T.M. 15/2 27 Ac.
- N- Golden Eagles Resources LLC & Hummer Properties LLC T.M. 15/12 28.944 Ac.
- O- Hall T.M. 11/49 6.36 Ac.
- P- Golden Eagles Resources LLC & Hummer Properties LLC T.M. 11/40 62.063 Ac.
- Q- Fourqurean T.M. 15/8.1 1.231 Ac. **APC0120**
- R- Hansen T.M. 4/29 3.5 Ac.
- S- Heartwood Forestland Fund IV Limited Partnership T.M. 4/51 114 Ac.
- T- Heartwood Forestland Fund IV Limited Partnership T.M. 15/11 50.00 Ac.
- U- Heartwood Forestland Fund IV Limited Partnership T.M. 15/1 52.5 Ac. **APC0511A**



NUMBER	DIRECTION	DISTANCE
L1	N04°47' E	1,851.9'
L2	S73°02' W	2,919.6'
L3	N70°02' E	801.6'

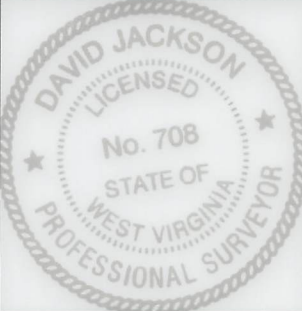
<b>Top Hole</b>	Geo NAD 83- 39.415462 N, 81.075038 W
	UTM NAD 83(Meters)-4362885.22 N, 493540.48 E
	UTM NAD 83(Feet)-14313899.25 N, 1619224.05 E
<b>Landing Point</b>	Geo NAD 83- 39.416250 N, 81.072389 W
	UTM NAD 83(Meters)-4362972.47 N, 493768.61 E
	UTM NAD 83(Feet)-14314185.52 N, 1619972.51 E
<b>Bottom Hole</b>	Geo NAD 83- 39.394733 N, 81.057068 W
	UTM NAD 83(Meters)-4360583.53 N, 495085.93 E
	UTM NAD 83(Feet)-14306347.80 N, 1624294.43 E

(+) DENOTES LOCATION OF WELL ON UNITED STATES TOPOGRAPHIC MAPS

FILE NO. \_\_\_\_\_  
 DRAWING NO. 1  
 SCALE 1" = 2000'  
 MINIMUM DEGREE OF ACCURACY 1 in 200  
 PROVEN SOURCE OF ELEVATION GPS  
submeter unit

I THE UNDERSIGNED, HEREBY CERTIFY THAT THIS PLAT IS CORRECT TO THE BEST OF MY KNOWLEDGE AND BELIEF AND SHOWS ALL THE INFORMATION REQUIRED BY LAW AND THE RULES ISSUED AND PRESCRIBED BY THE DEPARTMENT OF ENVIRONMENTAL PROTECTION.

(SIGNED) David L. Jackson  
 R.P.E. \_\_\_\_\_ P.S. 708



STATE OF WEST VIRGINIA  
 Division of Environmental Protection  
 OFFICE OF OIL AND GAS

DATE June 29, 2018  
 Revised July 01, 2019  
 OPERATOR'S WELL NO. P5N3  
 API WELL NO. 47-073-02586  
 WELL TYPE: OIL GAS  LIQUID INJECTION WASTE DISPOSAL  
 (IF "GAS") PRODUCTION  STORAGE DEEP SHALLOW  
 LOCATION: ELEVATION 868.1' WATER SHED Sugar Creek of Outlet Middle Island Creek (HUC-10)  
 DISTRICT Union COUNTY Pleasants  
 QUADRANGLE Bens Run 7 1/2'

SURFACE OWNER BB Land, LLC. ACREAGE 165.0 Ac.  
 OIL & GAS ROYALTY OWNER Roger Wells, Howard Wells, J.R. Wells, LEASE ACREAGE 165.0 Ac.  
Clint Jones, Beverly Walker, Sara Wells & Thomas Dunsford, Yvonne Shelley LEASE NO. P7207

PROPOSED WORK: DRILL  CONVERT DRILL DEEPER REDRILL FRACTURE OR STIMULATE  PLUG OFF OLD FORMATION PERFORATE NEW FORMATION OTHER PHYSICAL CHANGE IN WELL (SPECIFY) \_\_\_\_\_

PLUG AND ABANDON CLEAN OUT AND REPLUG  
 TARGET FORMATION Marcellus ESTIMATED DEPTH TVD = 5,900'; TMD = 16,155'  
 WELL OPERATOR Jay-Bee Oil & Gas, Inc. DESIGNATED AGENT Randy Broda  
 ADDRESS 60 Walnut Avenue, Suite 190, Clark NJ 07066 ADDRESS 3570 Shields Hill Rd., Cairo, WV 26337