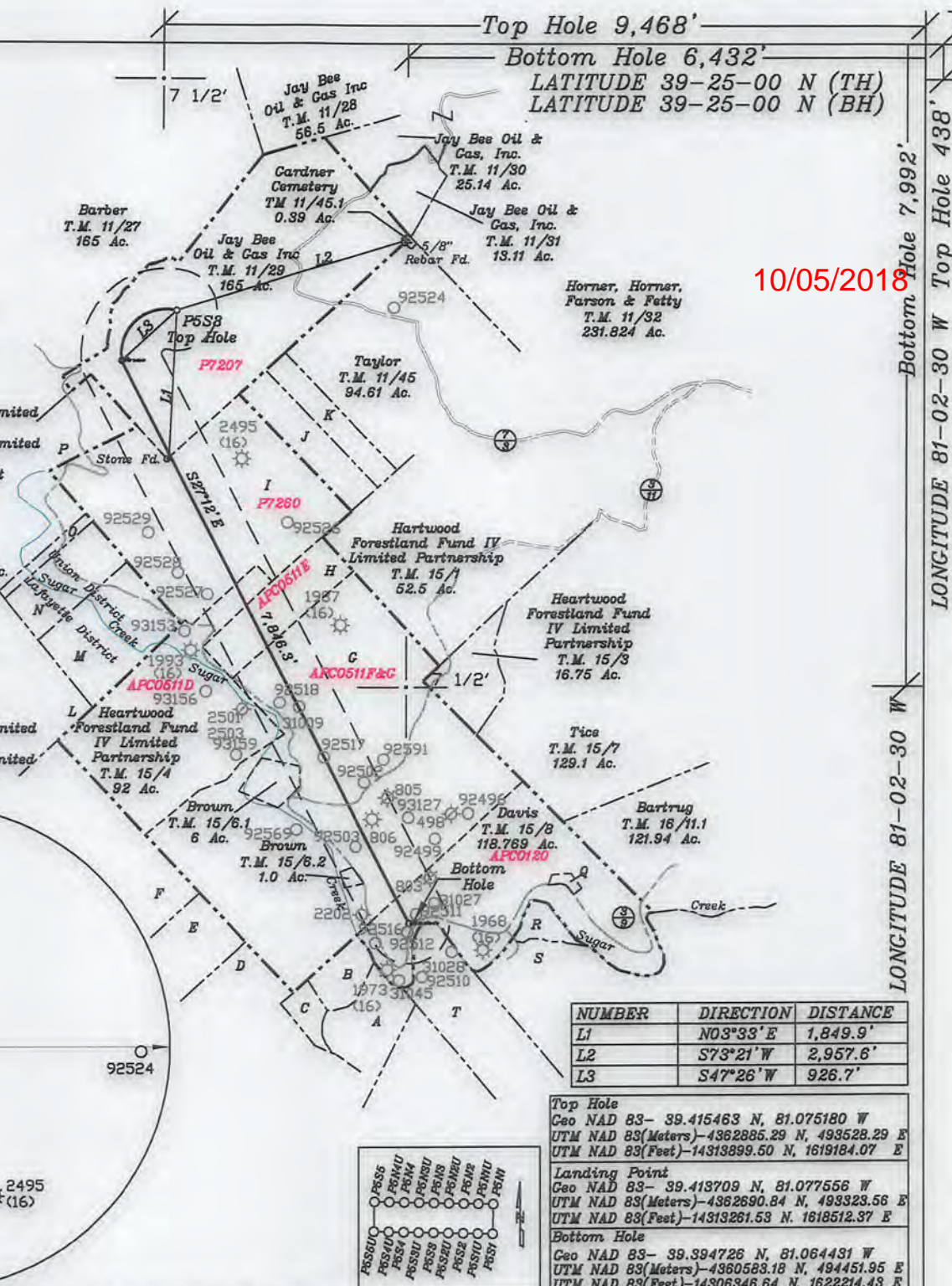


References:



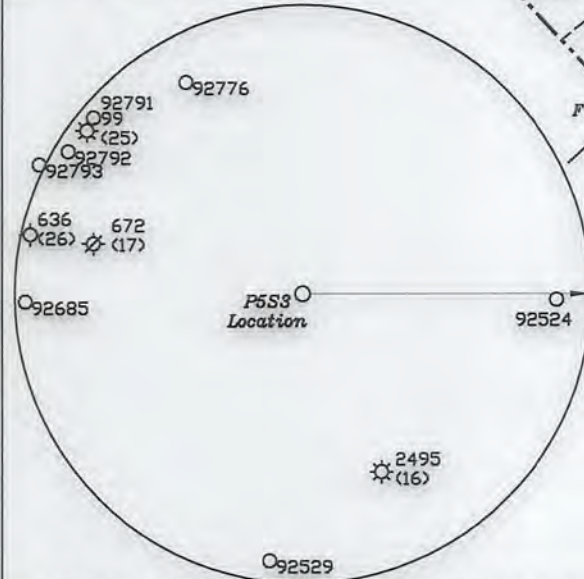
- A- Napier T.M. 4/28.18 20.52 Ac.
- B- Napier T.M. 4/28.17 17.164 Ac.
- C- Winland T.M. 4/28.18 8.076 Ac.
- D- Hooper T.M. 4/25 23.066 Ac.
- E- Cumm T.M. 4/24 51.0 Ac.
- F- Fleming T.M. 4/15 87.5 Ac.
- G- Heartwood Forestland Fund IV Limited Partnership T.M. 15/6 266 Ac.
- H- Heartwood Forestland Fund IV Limited Partnership T.M. 15/5 50 Ac.
- I- Melanie Jo Manuse Revocable Trust T.M. 11/41 123.27 Ac.
- J- Taylor T.M. 11/44 26.8 Ac.
- K- Taylor T.M. 11/43 18.8 Ac.
- L- Hall T.M. 4/7 39.5 Ac.
- M- Heartwood Forestland Fund IV Limited Partnership T.M. 15/2 27 Ac.
- N- Golden Eagles Resources LLC & Hummer Properties LLC T.M. 15/12 28.944 Ac.
- O- Hall T.M. 11/49 6.38 Ac.
- P- Golden Eagles Resources LLC & Hummer Properties LLC T.M. 11/40 62.063 Ac.
- Q- Fourquarean T.M. 15/8.1 1.28 Ac.
- R- Hansen T.M. 4/29 3.5 Ac.
- S- Heartwood Forestland Fund IV Limited Partnership T.M. 4/51 114 Ac.
- T- Heartwood Forestland Fund IV Limited Partnership T.M. 15/11 50.00 Ac.



10/05/2018

NORTH

Top Hole 9,468'
Bottom Hole 6,432'
LONGITUDE 81-02-30 W Top Hole 438'
LONGITUDE 81-02-30 W Bottom Hole 7,992'



NUMBER	DIRECTION	DISTANCE
L1	N03°33'E	1,849.9'
L2	S73°21'W	2,957.6'
L3	S47°26'W	926.7'

Top Hole
Geo NAD 83- 39.415463 N, 81.075180 W
UTM NAD 83(Meters)-4362885.29 N, 493528.29 E
UTM NAD 83(Feet)-14313899.50 N, 1619184.07 E
Landing Point
Geo NAD 83- 39.418709 N, 81.077556 W
UTM NAD 83(Meters)-4362690.84 N, 493323.56 E
UTM NAD 83(Feet)-14313261.53 N, 1618512.37 E
Bottom Hole
Geo NAD 83- 39.394726 N, 81.064431 W
UTM NAD 83(Meters)-4360583.18 N, 494451.95 E
UTM NAD 83(Feet)-14306346.64 N, 1622214.43 E

(+) DENOTES LOCATION OF WELL ON UNITED STATES TOPOGRAPHIC MAPS

FILE NO. _____
 DRAWING NO. 1
 SCALE 1" = 2000'
 MINIMUM DEGREE OF ACCURACY 1 in 200
 PROVEN SOURCE OF ELEVATION GPS
submeter unit

I THE UNDERSIGNED, HEREBY CERTIFY THAT THIS PLAT IS CORRECT TO THE BEST OF MY KNOWLEDGE AND BELIEF AND SHOWS ALL THE INFORMATION REQUIRED BY LAW AND THE RULES ISSUED AND PRESCRIBED BY THE DEPARTMENT OF ENVIRONMENTAL PROTECTION.

(SIGNED) David J. Jackson
 R.P.E. _____ P.S. 708



STATE OF WEST VIRGINIA
 Division of Environmental Protection
 OFFICE OF OIL AND GAS

DATE December 05, 2017
 OPERATOR'S WELL NO. P5S3
 API WELL NO. _____

WELL TYPE: OIL GAS LIQUID INJECTION _____ WASTE DISPOSAL _____ STATE 47 COUNTY 073 PERMIT 02576 HGA

(IF "GAS") PRODUCTION X STORAGE _____ DEEP _____ SHALLOW X

LOCATION: ELEVATION 868.1' WATER SHED Sugar Creek of Outlet Middle Island Creek (HUC-10)
 DISTRICT Union COUNTY Pleasants
 QUADRANGLE Bens Run 7 1/2'

SURFACE OWNER Jay Bee Oil & Gas Inc. ACREAGE 165.0 Ac.
 OIL & GAS ROYALTY OWNER Roger Wells, Howard Wells, J.R. Wells, Clint Jones, Beverly Walker, Sara Wells & Thomas Dunsford, Yvonne Shelley LEASE ACREAGE 165.0 Ac. LEASE NO. P7207

PROPOSED WORK: DRILL X CONVERT _____ DRILL DEEPER _____ REDRILL _____ FRACTURE OR STIMULATE X PLUG OFF OLD FORMATION _____ PERFORATE NEW FORMATION X OTHER PHYSICAL CHANGE IN WELL (SPECIFY) _____

PLUG AND ABANDON _____ CLEAN OUT AND REPLUG _____
 TARGET FORMATION Marcellus ESTIMATED DEPTH TVD = 5,900'; TMD = 15,173'
 WELL OPERATOR Jay-Bee Oil & Gas, Inc. DESIGNATED AGENT Randy Broda
 ADDRESS 1720 Route 22 E, Union, NJ 07083 ADDRESS 3570 Shields Hill Rd., Cairo, WV 26337