

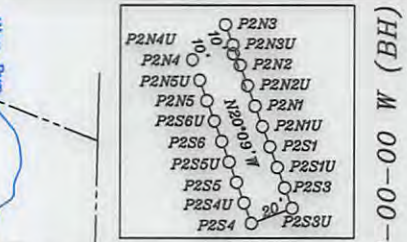
Bottom Hole 10,071'  
LATITUDE 39-27-30 N

NUMBER	DIRECTION	DISTANCE
L1	S23°15'W	363'
L2	N04°54'W	580'
L3	N64°59'W	1028'

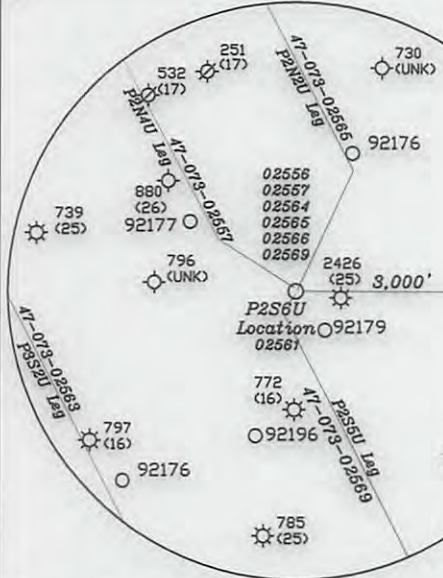
--- Unit Boundary Line  
410' from Bore Path

----- 500' from Bore Path

..... Final Lease Line



- References:
- 14" Black Walnut
  - 15" Poplar
- References:
- Greene (Life) T.M. 7/17 89.32 Ac. P7251
  - Lori Jean Barabow T.M. 7/32 60.75 Ac. P7251
  - Greene (Life) T.M. 7/18 17.50 Ac. P7251
  - A- Renner T.M. 7/32.1 2.5 Ac P7251A
  - B- Barabow T.M. 7/32.2 6.254 Ac P7251
  - C- Morgan T.M. 7/24.2 9.13 Ac P7220
  - D- Morgan Valley Farms, Inc. T.M. 7/24 27.45 Ac P7220
  - E- Beech Run Church & Cemetery T.M. 7/24.1 2 Ac. P7220A, P7220D
  - F- Bunner, et al T.M. 7/24.5 0.5 Ac P720D
  - G- Cornell T.M. 7/24.4 0.723 Ac P720B
  - H- Cemetery T.M. 12/35 P721B
  - I- Hall T.M. 12/19.1 1 Ac
  - J- Lowther T.M. 12/29.1 1.03 Ac
  - K- Lowther T.M. 12/28.4 11.34 Ac
  - L- Renner, et al T.M. 12/29.4 0.578 Ac
  - M- Renner, et al T.M. 12/29.3 2.291 Ac
  - N- Baker T.M. 12/28.3 1.102 Ac
  - O- Templeton T.M. 12/28.2 2.33 Ac
  - P- Murphy T.M. 12/29.2 0.177 Ac
  - Q- Hamilton T.M. 12/16 42 Ac
  - R- Grove T.M. 12/28.5 21 Ac
  - S- Grove T.M. 12/28.1 3.1 Ac
  - T- Hileman, et al T.M. 12/19 2 Ac
  - U- Wise T.M. 12/20 1.83 Ac P7065 & P7068
  - V- Street T.M. 12/12.1 17 Ac P7065 & P7068
  - W- Miller, et al T.M. 12/4 1.5 Ac
  - X- Kaess T.M. 12/39 0.64 Ac P721A
  - Y- Kaess T.M. 12/5 1 Ac P7221
  - Z- Kaess T.M. 7/29&30 97.364 Ac P7221
  - AA- Wm. Munday T.M. 7/ 32.3 7 Ac P7251B
  - BB- Cain T.M. 7/ 32.4 7 Ac P7251C



Notes:

- All wells within 500' of the horizontal leg are shown on this plat based upon information taken from DEP mapping, well plats, & aerial photos.
- Ties to wells and corners are based on State Plane Grid North-WV North Zone NAD 83.
- A spring bears S47°08'W 228.6 from this location.
- No dwellings or buildings were found within 625' from the center of the proposed pad. No perennial stream is located within 100' of LOD. No producing trout stream located within 300' of LOD.
- Well bore paths and Top Hole location are over 400' from all lease and unit boundary lines except the unit boundary for P2N4U.
- Deep wells (02557, 02563, 02565, 02567, & 02569) were found within 3,000' of the leg are shown on the plat.

Top Hole  
Geo NAD 83- 39.435409 N, 81.042576 W  
UTM NAD 83(Meters)-4365097.01 N, 496335.95 E  
UTM NAD 83(Feet)-1432155.77 N, 1628395.52 E  
State Plane NAD 83(Feet)-  
344442.02 N, 1532833.81 E

Landing Point  
Geo NAD 83- 39.434171 N, 81.045848 W  
UTM NAD 83(Meters)-4364959.82 N, 496054.36 E  
UTM NAD 83(Feet)-14320705.89 N, 1627471.87 E  
State Plane NAD 83(Feet)-  
344007.274 N, 1531902.254 E

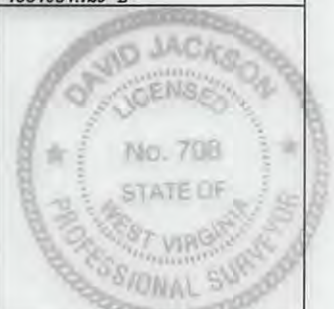
Bottom Hole  
Geo NAD 83- 39.419229 N, 81.035667 W  
UTM NAD 83(Meters)-4363301.12 N, 496929.80 E  
UTM NAD 83(Feet)-14315263.74 N, 1630343.85 E  
State Plane NAD 83(Feet)-  
338516.224 N, 1534684.129 E

(+) DENOTES LOCATION OF WELL ON UNITED STATES TOPOGRAPHIC MAPS

FILE NO. \_\_\_\_\_  
DRAWING NO. 1  
SCALE 1" = 2000'  
MINIMUM DEGREE OF ACCURACY 1 in 200  
PROVEN SOURCE OF ELEVATION GPS  
submeter unit

I THE UNDERSIGNED, HEREBY CERTIFY THAT THIS PLAT IS CORRECT TO THE BEST OF MY KNOWLEDGE AND BELIEF AND SHOWS ALL THE INFORMATION REQUIRED BY LAW AND THE RULES ISSUED AND PRESCRIBED BY THE DEPARTMENT OF ENVIRONMENTAL PROTECTION.

(SIGNED) David L Jackson  
R.P.E. \_\_\_\_\_ P.S. 708



STATE OF WEST VIRGINIA  
Division of Environmental Protection  
OFFICE OF OIL AND GAS

DATE April 5, 2017  
OPERATOR'S WELL NO. P2S6U  
API WELL NO. \_\_\_\_\_

WELL TYPE: OIL X GAS X LIQUID INJECTION \_\_\_\_\_ WASTE DISPOSAL \_\_\_\_\_  
(IF "GAS") PRODUCTION X STORAGE \_\_\_\_\_ DEEP X SHALLOW \_\_\_\_\_  
LOCATION: ELEVATION 712.2' WATER SHED Middle Island Creek  
DISTRICT Union COUNTY Pleasants  
QUADRANGLE Bens Run 7 1/2'

SURFACE OWNER Morgan Valley Farms, Inc. ACREAGE 27.451 Ac.  
OIL & GAS ROYALTY OWNER Morgan Valley Farms, Inc. LEASE ACREAGE 102.777 Ac.  
LEASE NO. P7220

PROPOSED WORK: DRILL X CONVERT \_\_\_\_\_ DRILL DEEPER \_\_\_\_\_ REDRILL \_\_\_\_\_ FRACTURE OR STIMULATE X PLUG OFF OLD FORMATION \_\_\_\_\_ PERFORATE NEW FORMATION X OTHER PHYSICAL CHANGE IN WELL (SPECIFY) \_\_\_\_\_

PLUG AND ABANDON \_\_\_\_\_ CLEAN OUT AND REPLUG \_\_\_\_\_  
TARGET FORMATION Utica ESTIMATED DEPTH TVD = 10,590'; TMD = 18,274'  
WELL OPERATOR Jay-Bee Oil & Gas, Inc. DESIGNATED AGENT Randy Broda  
ADDRESS 1720 Route 22 E, Union, NJ 07083 ADDRESS 3570 Shields Hill Rd., Cairo, WV 26337

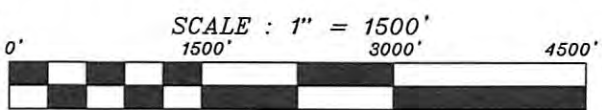
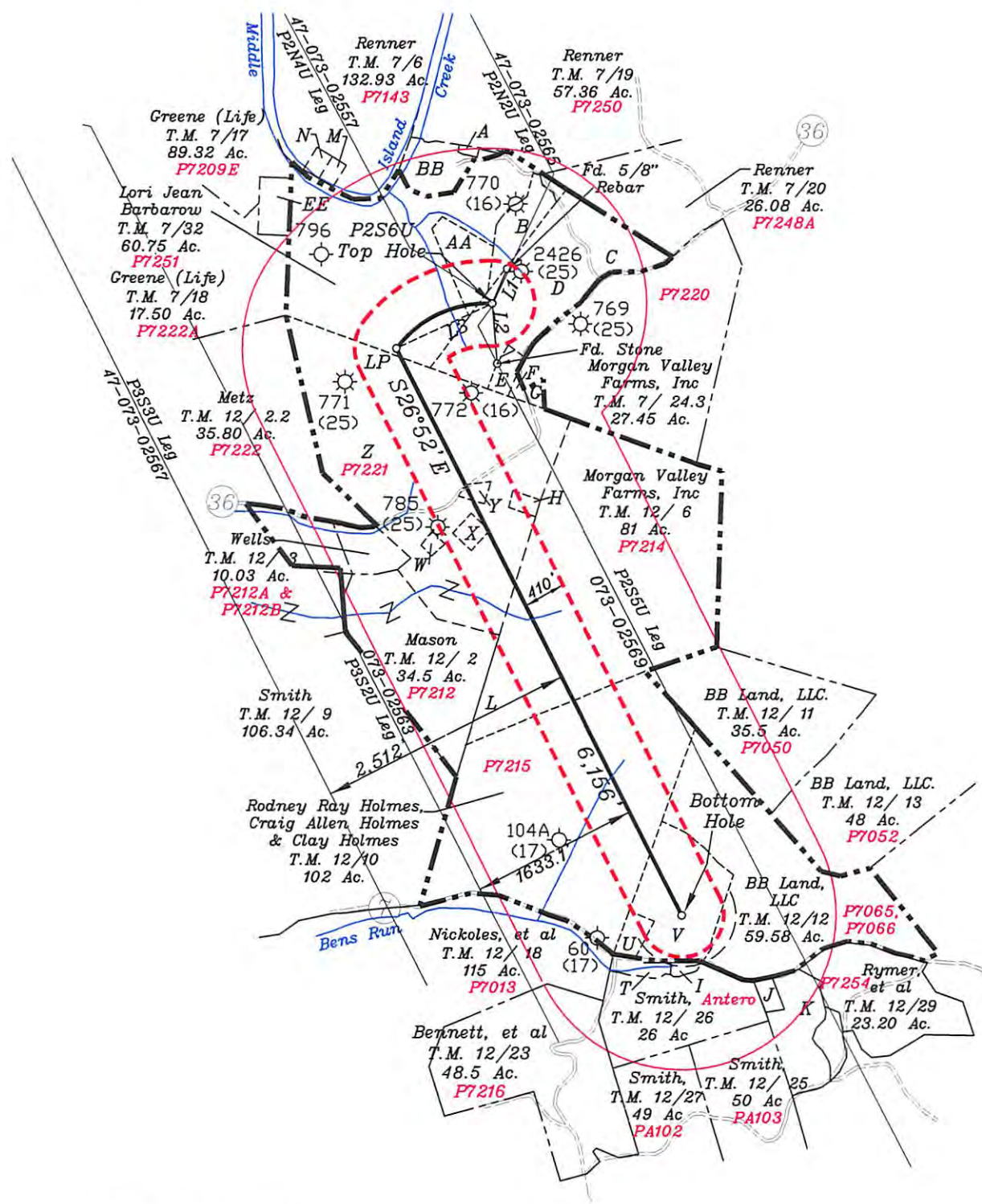
04/21/2017



# EXHIBIT MAP FOR JAY BEE

WELL NO. P2S6U  
Union District, Pleasants County  
March 30, 2017

- A- Renner T.M. 7/32.1 2.5 Ac **P7251A**
- B- Barbarow T.M. 7/32.2 6.254 Ac.
- C- Morgan T.M. 7/24.2 9.13 Ac **P7220**
- D- Morgan Valley Farms, Inc.  
T.M. 7/24 27.45 Ac **P7220**
- E- Beech Run Church & Cemetry  
T.M. 7/24.1 2 Ac. **P7220A, P7220D**
- F- Bunner, et al T.M. 7/24.5 0.5 Ac **P7220D**
- G- Cornell T.M. 7/24.4 0.723 Ac **P7220B**
- H- Cemetery T.M. 12/35 **P7221B**
- I- Hall T.M. 12/19.1 1 Ac **Antero**
- J- Lowther T.M. 12/29.1 1.03 Ac **P7254A**
- K- Lowther T.M. 12/28.4 11.34 Ac **P72546**
- L- Langford T.M. 12 /2.1 6.3 Ac **P7211B**
- M- Parsons T.M. 7/6.2 1 Ac
- N- Cain T.M. 7/6.1 1 Ac



LEGEND	
	1500' BOREPATH OFFSET
	UNIT BOUNDARY 410' FROM WELL BORE PATH, TH & BH
	FINAL LEASE LINE
	INTERIOR TRACT LINE
	ADJOINER LINE
	ROAD LINE
	STREAM LINE

Jackson Surveying Inc.  
677 W. Main Street  
Clarksburg, WV 26301  
(304) 623-5851

- T- Hileman, et al T.M. 12/19 2 Ac **Antero**
- U- Wise T.M. 12/20 1.83 Ac **P7065 & P7068**
- V- Street T.M. 12/12.1 17 Ac **P7065 & P7068**
- W- Miller, et al T.M. 12/4 1.5 Ac
- X- Kaess T.M. 12/39 0.64 Ac **P7221A**
- Y- Kaess T.M. 12/5 1 Ac **P7221**
- Z- Kaess T.M. 7/29&30 97.364 Ac **P7221**
- AA- Wm. Munday T.M. 7/ 32.3 7 Ac **P7251B**
- BB- Cain T.M. 7/ 32.4 7 Ac **P7251C**
- EE- Greene T.M. 7/18.1 1 Ac.

04/21/2017