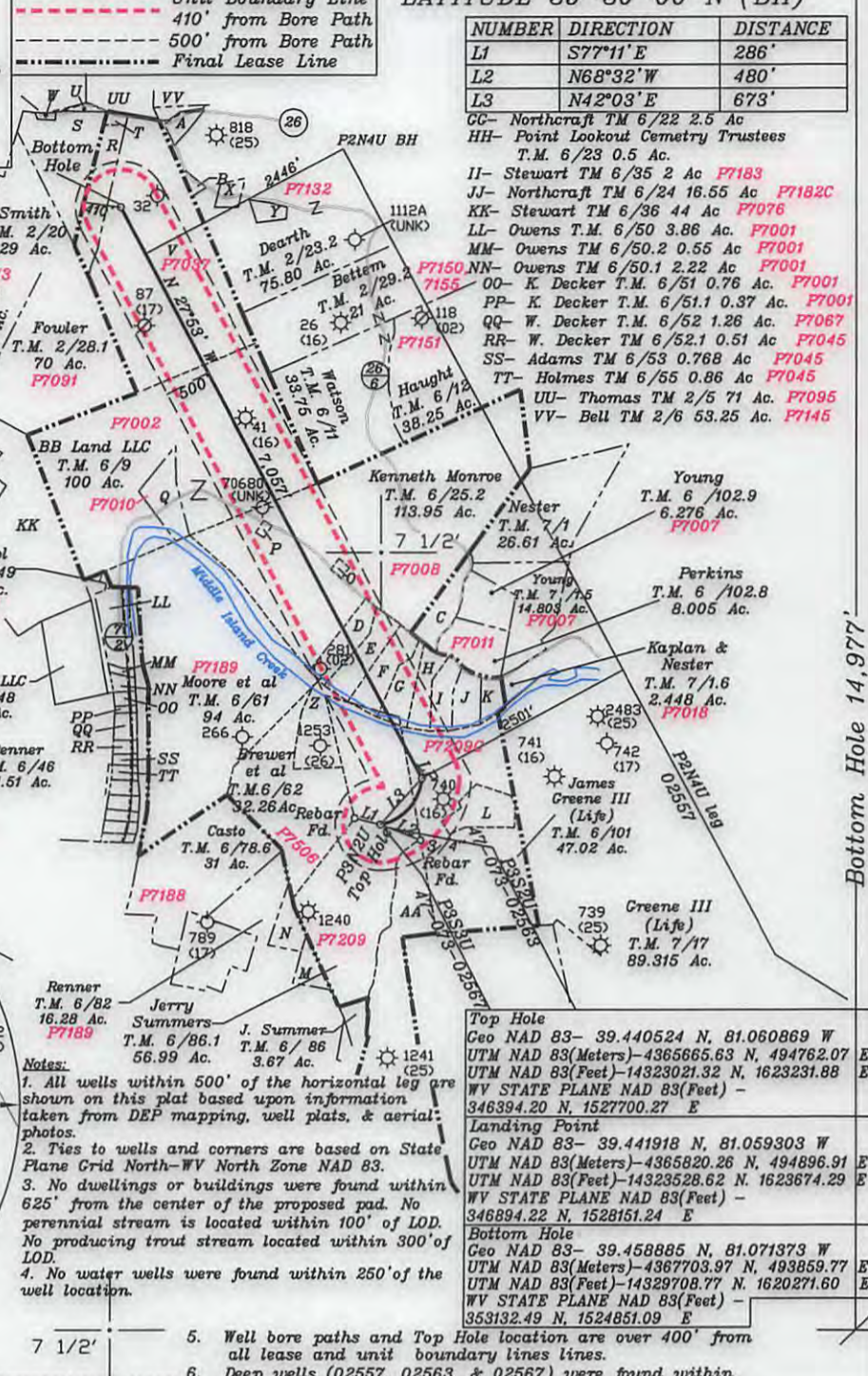
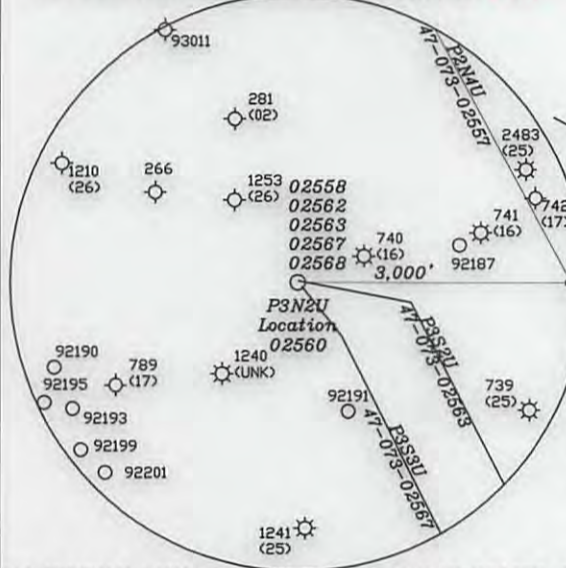


References:

- P3N2U N79°45'W 429.8'
- 13" Red Maple
- 16" Poplar
- A- Bennett TM 2/23.3 0.53 Ac
- B- Dearth T.M. 2/ 23.1 1 Ac. F7505
- C- Perkins TM 6/102.6 5.802 Ac F7011
- D- Clinton Perkins TM 6/102.1 5.594 Ac F7006
- E- Clinton Perkins TM 6/102.3 6.378 Ac
- F- Clinton Perkins TM 6/102.4 6.888 Ac F7008
- G- Clinton Perkins TM 6/102 4.896 Ac F7009
- H- Perkins TM 6/102.5 4.455 Ac F7008
- I- Kibble TM 6/102.7 4.245 Ac F7004
- J- Stevenson TM 6/102.10 4.111 Ac F7003
- K- Stevenson TM 6/102.2 2.466 Ac F7005
- L- J. Greene IV TM 6/101.1 6.156 Ac F7209D
- M- J. Renner TM 6/83.2 2.776 Ac F7189C
- N- C. Renner TM 6/82.4 3.581 Ac F7189B
- O- Kenneth Monroe TM 6/25.1 0.51 Ac F7008
- P- Kenneth Monroe TM 6/25 0.54 Ac F7009
- Q- George Zipfetal TM 6/10 1 Ac F7010
- R- Smith & Nash T.M. 2/19 16.34 Ac. F7156
- S- Smith & Nash T.M. 2/18 20.29 Ac.
- T- John Decker T.M. 2/30 0.71 Ac. F7156
- U- Smith & Nash T.M. 2/18.1 0.25 Ac. F7157
- V- Edward Bilderbach T.M. 2/22 69.213 Ac. F7037
- W- Bibee's Chapel & Cemetery T.M. 2/ 17&18.2 0.28 Ac.
- X- Kemp T.M. 2/ 23 1.55 Ac F7132
- Y- Dearth T.M. 2/ 23.4 1.618 Ac F7132
- Z- Brewer, et al T.M. 6/63 7.74 Ac. F7507
- AA- Stewart T.M. 6/85 27.53 Ac F7209B
- BB- Dawson T.M. 2/26 5 Ac.
- CC- Fowler TM 2/27 5.25 Ac
- DD- Likens TM 2/28.2 4.33 Ac F7167
- EE- Likens TM 2/28.4 0.166 Ac
- FF- Heflin TM 2/28.3 0.5 Ac
- GG- Wells Cattle Farms, Inc. TM 7/27 93.03 Ac. F7210



NUMBER	DIRECTION	DISTANCE
L1	S77°11' E	286'
L2	N68°32' W	480'
L3	N42°03' E	673'

- CC- Northcraft TM 6/22 2.5 Ac
- HH- Point Lookout Cemetery Trustees T.M. 6/23 0.5 Ac.
- II- Stewart TM 6/35 2 Ac F7183
- JJ- Northcraft TM 6/24 16.55 Ac F7182C
- KK- Stewart TM 6/36 44 Ac F7076
- LL- Owens T.M. 6/50 3.86 Ac. F7001
- MM- Owens TM 6/50.2 0.55 Ac F7001
- NN- Owens TM 6/50.1 2.22 Ac F7001
- OO- K. Decker T.M. 6/51 0.76 Ac. F7001
- PP- K. Decker T.M. 6/51.1 0.37 Ac. F7001
- QQ- W. Decker T.M. 6/52 1.26 Ac. F7067
- RR- W. Decker TM 6/52.1 0.51 Ac F7045
- SS- Adams TM 6/53 0.768 Ac F7045
- TT- Holmes TM 6/55 0.86 Ac F7045
- UU- Thomas TM 2/5 71 Ac. F7095
- VV- Bell TM 2/6 53.25 Ac. F7145

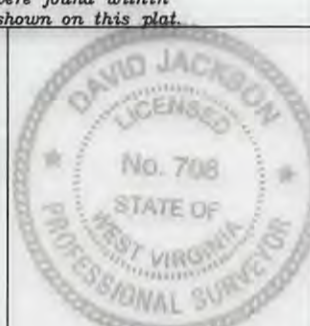
- Notes:
- All wells within 500' of the horizontal leg are shown on this plat based upon information taken from DEP mapping, well plats, & aerial photos.
 - Ties to wells and corners are based on State Plane Grid North-WV North Zone NAD 83.
 - No dwellings or buildings were found within 625' from the center of the proposed pad. No perennial stream is located within 100' of LOD. No producing trout stream located within 300' of LOD.
 - No water wells were found within 250' of the well location.
 - Well bore paths and Top Hole location are over 400' from all lease and unit boundary lines.
 - Deep wells (02557, 02563, & 02567) were found within 3,000' of this well bore and are shown on this plat.

Top Hole
Geo NAD 83- 39.440524 N, 81.060869 W
UTM NAD 83(Meters)-4365665.63 N, 494762.07 E
UTM NAD 83(Feet)-14323021.32 N, 1623231.88 E
WV STATE PLANE NAD 83(Feet) - 346394.20 N, 1527700.27 E
Landing Point
Geo NAD 83- 39.441918 N, 81.059303 W
UTM NAD 83(Meters)-4365820.26 N, 494896.91 E
UTM NAD 83(Feet)-14323528.62 N, 1623674.29 E
WV STATE PLANE NAD 83(Feet) - 346894.22 N, 1528151.24 E
Bottom Hole
Geo NAD 83- 39.458885 N, 81.071373 W
UTM NAD 83(Meters)-4367703.97 N, 493859.77 E
UTM NAD 83(Feet)-14329708.77 N, 1620271.60 E
WV STATE PLANE NAD 83(Feet) - 353132.49 N, 1524851.09 E

FILE NO. _____
DRAWING NO. 1
SCALE 1" = 2000'
MINIMUM DEGREE OF ACCURACY 1 in 200
PROVEN SOURCE OF ELEVATION GPS
submeter unit

I THE UNDERSIGNED, HEREBY CERTIFY THAT THIS PLAT IS CORRECT TO THE BEST OF MY KNOWLEDGE AND BELIEF AND SHOWS ALL THE INFORMATION REQUIRED BY LAW AND THE RULES ISSUED AND PRESCRIBED BY THE DEPARTMENT OF ENVIRONMENTAL PROTECTION.

(SIGNED) David L Jackson
R.P.E. _____ P.S. 708



STATE OF WEST VIRGINIA
Division of Environmental Protection
OFFICE OF OIL AND GAS

DATE July 7, 2017
OPERATOR'S WELL NO. P3N2U
API WELL NO. _____

WELL TYPE: OIL GAS LIQUID INJECTION X WASTE DISPOSAL _____
(IF "GAS") PRODUCTION X STORAGE _____ DEEP X SHALLOW _____
LOCATION: ELEVATION 839.27' WATER SHED Middle Island Creek
DISTRICT Union COUNTY Pleasants
QUADRANGLE Bens Run 7 1/2'

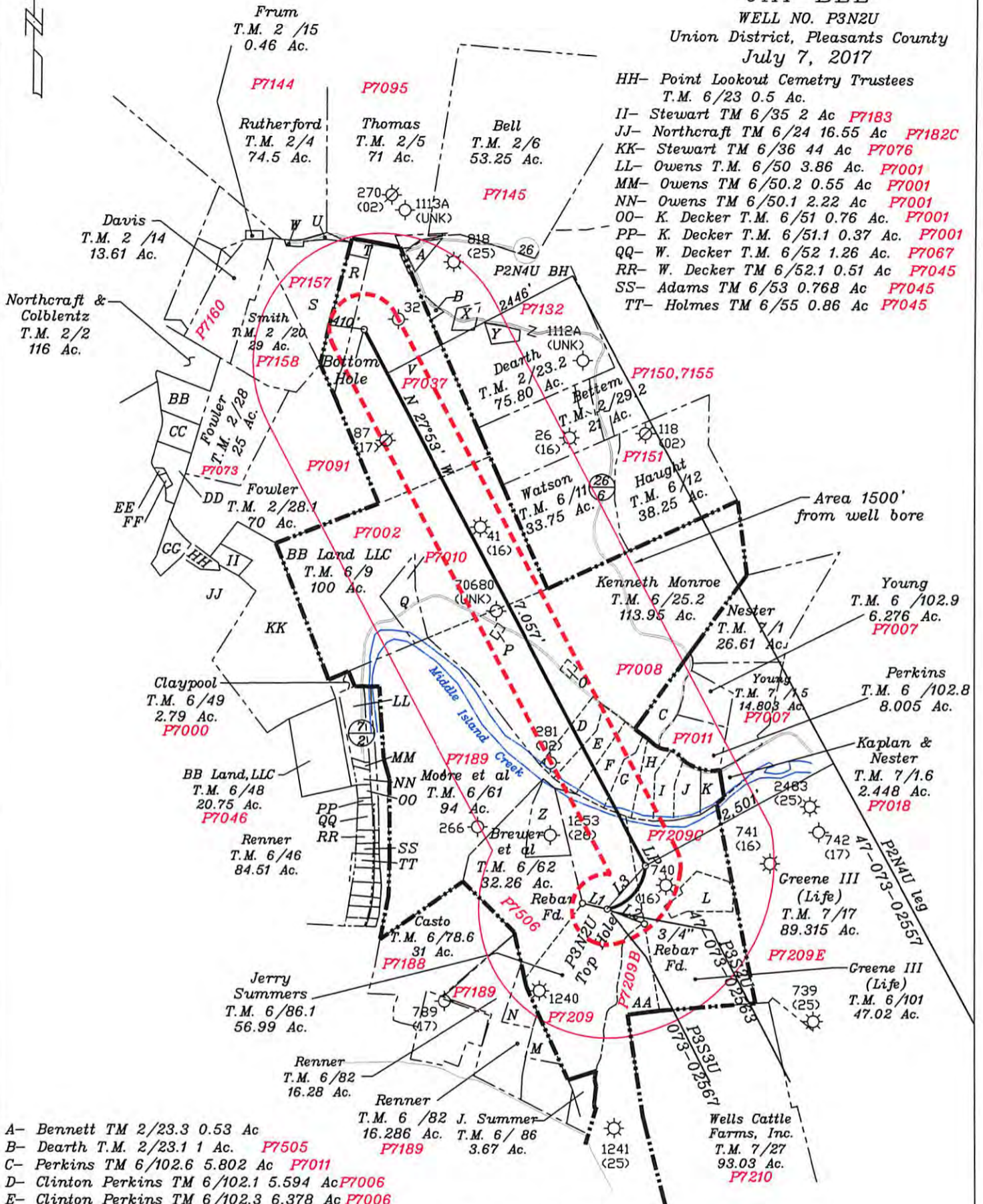
SURFACE OWNER Jerry Lee Summers ACREAGE 56.99
OIL & GAS ROYALTY OWNER Jerry Lee Summers LEASE ACREAGE 68.99
LEASE NO. P7209

PROPOSED WORK: DRILL X CONVERT _____ DRILL DEEPER _____ REDRILL _____ FRACTURE OR STIMULATE X PLUG OFF OLD FORMATION _____ PERFORATE NEW FORMATION X OTHER PHYSICAL CHANGE IN WELL (SPECIFY) _____

PLUG AND ABANDON _____ CLEAN OUT AND REPLUG _____
TARGET FORMATION Point Pleasant ESTIMATED DEPTH TVD = 10,717'; TMD = 18,947'
WELL OPERATOR Jay-Bee Oil & Gas, Inc. DESIGNATED AGENT Randy Broda
ADDRESS 1720 Route 22 E, Union, NJ 07083 ADDRESS 3570 Shields Hill Rd., Cairo, WV 26337

EXHIBIT MAP FOR JAY BEE

WELL NO. P3N2U
Union District, Pleasants County
July 7, 2017



- HH- Point Lookout Cemetery Trustees
T.M. 6/23 0.5 Ac.
- II- Stewart TM 6/35 2 Ac P7183
- JJ- Northcraft TM 6/24 16.55 Ac P7182C
- KK- Stewart TM 6/36 44 Ac P7076
- LL- Owens T.M. 6/50 3.86 Ac P7001
- MM- Owens TM 6/50.2 0.55 Ac P7001
- NN- Owens TM 6/50.1 2.22 Ac P7001
- OO- K. Decker T.M. 6/51 0.76 Ac P7001
- PP- K. Decker T.M. 6/51.1 0.37 Ac P7001
- QQ- W. Decker T.M. 6/52 1.26 Ac P7067
- RR- W. Decker TM 6/52.1 0.51 Ac P7045
- SS- Adams TM 6/53 0.768 Ac P7045
- TT- Holmes TM 6/55 0.86 Ac P7045

- A- Bennett TM 2/23.3 0.53 Ac
- B- Dearth T.M. 2/23.1 1 Ac P7505
- C- Perkins TM 6/102.6 5.802 Ac P7011
- D- Clinton Perkins TM 6/102.1 5.594 Ac P7006
- E- Clinton Perkins TM 6/102.3 6.378 Ac P7006
- F- Clinton Perkins TM 6/102.4 6.688 Ac P7006
- G- Clinton Perkins TM 6/102 4.896 Ac P7006
- H- Perkins TM 6/102.5 4.455 Ac P7006
- I- Kibble TM 6/102.7 4.245 Ac P7004

- J- Stevenson TM 6/102.10 4.111 Ac P7003
- K- Stevenson TM 6/102.2 2.466 Ac P7005
- L- J. Greene IV TM 6/101.1 6.156 Ac P7209D
- M- J. Renner TM 6/83.2 2.776 Ac P7189C
- N- C. Renner TM 6/82.4 3.581 Ac P7189B
- O- Kenneth Monroe TM 6/25.1 0.51 Ac P7008
- P- Kenneth Monroe TM 6/25 0.54 Ac P7009
- Q- George Zipfetal TM 6/10 1 Ac P7010
- R- Smith & Nash T.M. 2/19 16.34 Ac P7156
- S- Smith & Nash T.M. 2/18 20.29 Ac P7157
- T- John Decker T.M. 2/30 0.71 Ac P7156
- U- Smith & Nash T.M. 2/18.1 0.25 Ac P7157
- V- Edward Bilderbach T.M. 2/22 69.213 Ac P7037
- W- Bibee's Chapel & Cemetery T.M. 2/17 & 18.2 0.28 Ac
- X- Kemp T.M. 2/23 1.55 Ac P7132
- Y- Dearth T.M. 2/23.4 1.618 Ac P7132
- Z- Brewer, et al T.M. 6/63 7.74 Ac P7507
- AA- Stewart T.M. 6/85 27.53 Ac P7209B
- BB- Dawson T.M. 2/26 5 Ac
- CC- Fowler TM 2/27 5.25 Ac
- DD- Likens TM 2/28.2 4.33 Ac P7167
- EE- Likens TM 2/28.4 0.166 Ac
- FF- Heflin TM 2/28.3 0.5 Ac
- GG- Northcraft TM 6/22 2.5 Ac

SCALE : 1" = 1500'
0' 1500' 3000' 4500'

LEGEND

- 1500' BOREPATH OFFSET
- - - UNIT BOUNDARY 410' FROM WELL BORE PATH, TH & BH
- FINAL LEASE LINE
- - - INTERIOR TRACT LINE
- - - ADJOINER LINE
- ROAD LINE
- STREAM LINE

Jackson Surveying Inc.
677 W. Main Street
Clarksburg, WV 26301
(304) 623-5851



08/11/2017