



Jay-Bee Oil & Gas

Pleasants County

P3 Pad

P3N2

Wellbore #1

Design: Wellbore #1

QES Survey Certification Report

14 October, 2017

RECEIVED
Office of Oil and Gas

JUN 03 2019

WV Department of
Environmental Protection



Quintana Energy Services

11390 FM 830
Willis, TX 77318
Phone: (936) 856-4332
Fax: (936) 856-8678



Survey Certification Sheet

Company	Job Number	Date
Jay-Bee Oil & Gas	AM-171058	2/19/2018

Lease	Well Name	County & State
N/A	P3N2	Pleasant County, West Virginia

API No.	Survey Depth Range	Survey Type
37-073-02558	470 feet to 13678 feet MD	MWD

Sidetrack Information	Directional Supervisor/Surveyor
Click here to enter text.	Adam Ball

Certification Statement

The data and calculations for this survey have been checked by me and conform to the standards and procedures set forth by Quintana Energy Services (QES). This report represents a true and correct directional survey of this well based on the original data obtained at the well site. Wellbore coordinates are calculated using minimum curvature.

Christopher Hughes

Digitally signed by Christopher Hughes
DN: cn=Christopher Hughes, o=QES, ou=compliance,
email=chrish@qeslp.com, c=US
Date: 2018.02.23 11:11:28 -06'00'

Christopher Hughes
MWD Compliance Manager

Quintana Energy Services

RECEIVED
Office of Oil and Gas

JUN 03 2019

WV Department of
Environmental Protection



QES Survey Certification Report



Company:	Jay-Bee Oil & Gas	Local Co-ordinate Reference:	Well P3N2
Project:	Pleasants County	TVD Reference:	well @ 859.9usft (Nomac #81)
Site:	P3 Pad	MD Reference:	well @ 859.9usft (Nomac #81)
Well:	P3N2	North Reference:	Grid
Wellbore:	Wellbore #1	Survey Calculation Method:	Minimum Curvature
Design:	Wellbore #1	Database:	EDM 5000.1 Single User Db

Project	Pleasants County		
Map System:	US State Plane 1983	System Datum:	Mean Sea Level
Geo Datum:	North American Datum 1983		
Map Zone:	West Virginia Northern Zone		

Site	P3 Pad				
Site Position:		Northing:	346,394.20 usft	Latitude:	39° 26' 25.886 N
From:	Map	Easting:	1,527,700.27 usft	Longitude:	81° 3' 39.129 W
Position Uncertainty:	0.0 usft	Slot Radius:	13-3/16"	Grid Convergence:	-1.00 °

Well	P3N2					
Well Position	+N/-S	0.0 usft	Northing:	346,389.57 usft	Latitude:	39° 26' 25.842 N
	+E/-W	0.0 usft	Easting:	1,527,709.13 usft	Longitude:	81° 3' 39.015 W
Position Uncertainty		0.0 usft	Wellhead Elevation:	0.0 usft	Ground Level:	839.3 usft

Wellbore	Wellbore #1				
Magnetics	Model Name	Sample Date	Declination (°)	Dip Angle (°)	Field Strength (nT)
	IGRF2015	9/30/2017	-8.38	66.71	52,006.62617032

Design	Wellbore #1				
Audit Notes:					
Version:	1.0	Phase:	ACTUAL	Tie On Depth:	0.0
Vertical Section:		Depth From (TVD) (usft)	+N/-S (usft)	+E/-W (usft)	Direction (°)
		0.0	0.0	0.0	336.74

Survey Program	Date	10/14/2017			
From (usft)	To (usft)	Survey (Wellbore)	Tool Name	Description	
470.0	13,678.0	MWD Surveys (Wellbore #1)	MWD default	MWD - Standard	

MD (usft)	Inc (°)	Azi (azimuth) (°)	TVD (usft)	N/S (usft)	E/W (usft)	Closure Distance (usft)	Closure Azimuth (°)	
0.0	0.00	0.00	0.0	0.0	0.0	0.0	0.00	
470.0	1.14	28.56	470.0	4.1	2.2	4.7	28.56	
First MWD Survey @ 470.0' MD / 470.0' TVD							RECEIVED	
518.0	2.35	66.40	517.9	4.9	3.4	8.4	34.37	
565.0	4.51	73.65	564.9	5.8	6.0	12.5	45.95	
613.0	6.29	79.42	612.6	6.8	10.4	21.0	56.71	
709.0	5.71	110.10	708.1	6.2	20.1	29.9	72.93	
804.0	3.75	133.63	802.8	2.4	26.8	29.9	84.88	
899.0	1.71	139.62	897.7	-0.8	29.9	31.8	81.58	
994.0	1.31	130.61	992.7	-2.6	31.7	33.4	94.72	
1,089.0	1.21	139.39	1,087.7	-4.1	33.2	35.2	97.02	
1,184.0	1.39	126.22	1,182.6	-5.5	34.7		99.04	



QES Survey Certification Report



Company:	Jay-Bee Oil & Gas	Local Co-ordinate Reference:	Well P3N2
Project:	Pleasants County	TVD Reference:	well @ 859.9usft (Nomac #81)
Site:	P3 Pad	MD Reference:	well @ 859.9usft (Nomac #81)
Well:	P3N2	North Reference:	Grid
Wellbore:	Wellbore #1	Survey Calculation Method:	Minimum Curvature
Design:	Wellbore #1	Database:	EDM 5000.1 Single User Db

Survey	MD (usft)	Inc (°)	Azi (azimuth) (°)	TVD (usft)	N/S (usft)	E/W (usft)	Closure Distance (usft)	Closure Azimuth (°)
	1,279.0	1.32	135.27	1,277.6	-7.0	36.4	37.1	100.85
	1,374.0	2.68	84.94	1,372.6	-7.6	39.4	40.1	100.86
	1,470.0	6.22	78.08	1,468.2	-6.3	46.7	47.2	97.67
	1,564.0	10.30	78.64	1,561.3	-3.6	60.0	60.1	93.42
	1,660.0	12.08	84.76	1,655.4	-1.0	78.4	78.4	90.71
	1,755.0	12.60	94.52	1,748.2	-0.9	98.6	98.6	90.51
	1,830.0	11.54	100.93	1,821.6	-3.0	114.1	114.2	91.48
	1,944.0	10.39	102.30	1,933.5	-7.3	135.4	135.6	93.09
	2,039.0	9.48	99.07	2,027.1	-10.4	151.5	151.8	93.91
	2,134.0	10.70	90.09	2,120.6	-11.6	168.0	168.4	93.95
	2,229.0	11.16	91.91	2,213.9	-11.9	186.0	186.4	93.67
	2,325.0	11.04	104.73	2,308.1	-14.6	204.2	204.7	94.08
	2,419.0	10.17	101.24	2,400.5	-18.5	221.1	221.8	94.78
	2,514.0	9.29	96.82	2,494.1	-21.0	236.9	237.8	95.07
	2,610.0	10.37	100.61	2,588.7	-23.5	253.1	254.2	95.31
	2,705.0	9.71	96.71	2,682.3	-26.0	269.4	270.7	95.52
	2,800.0	10.61	101.11	2,775.8	-28.7	286.0	287.4	95.73
	2,895.0	9.70	96.30	2,869.3	-31.2	302.5	304.1	95.89
	2,994.0	10.70	109.89	2,966.7	-35.3	319.5	321.4	96.30
	3,089.0	9.47	107.21	3,060.3	-40.6	335.2	337.7	96.90
	3,183.0	8.52	104.67	3,153.1	-44.6	349.3	352.2	97.28
	3,278.0	10.34	99.15	3,246.8	-47.8	364.6	367.7	97.47
	3,373.0	8.92	91.38	3,340.5	-49.3	380.3	383.5	97.39
	3,469.0	10.12	98.96	3,435.2	-50.8	396.1	399.4	97.31
	3,564.0	9.75	92.52	3,528.8	-52.5	412.4	415.7	97.25
	3,659.0	10.53	103.70	3,622.3	-54.9	428.9	432.4	97.29
	3,754.0	9.88	100.80	3,715.8	-58.5	445.3	449.1	97.48
	3,849.0	9.47	97.81	3,809.4	-61.0	461.1	465.1	97.54
	3,944.0	8.85	93.20	3,903.2	-62.5	476.1	480.2	97.48
	4,040.0	9.30	104.11	3,998.0	-64.8	491.0	495.3	97.52
	4,135.0	9.24	102.57	4,091.8	-68.3	505.9	510.5	97.69
	4,229.0	8.80	99.90	4,184.6	-71.2	520.3	525.2	97.79
	4,324.0	8.02	102.98	4,278.6	-74.0	534.0	539.1	97.89
	4,419.0	9.48	89.49	4,372.5	-75.4	548.2	553.4	97.83
	4,514.0	10.58	93.31	4,466.0	-75.8	564.8	569.8	97.65
	4,609.0	11.34	101.12	4,559.3	-78.1	582.6	587.9	97.64
	4,703.0	10.82	100.11	4,651.6	-81.5	600.4	605.9	97.73
	4,798.0	10.13	98.89	4,745.0	-84.3	617.4	623.2	97.78
	4,893.0	9.20	97.98	4,838.6	-86.7	633.2	639.1	97.79
	4,988.0	7.89	97.61	4,932.6	-88.6	647.2	653.2	97.79
	5,031.0	7.60	97.60	4,975.2	-89.3	652.9	659.0	97.79
	5,079.0	8.50	79.60	5,022.7	-89.1	659.6	665.6	97.70
	5,126.0	10.70	58.80	5,069.1	-86.2	666.7	672.3	97.37
	5,174.0	11.30	37.80	5,116.2	-80.2	673.4	678.2	96.79

RECEIVED
 653.2
 Office of Oil and Gas
 659.0
 665.6
 JUN 30 3 2019
 678.2
 WV Department of
 Environmental Protection



QES Survey Certification Report



Company:	Jay-Bee Oil & Gas	Local Co-ordinate Reference:	Well P3N2
Project:	Pleasants County	TVD Reference:	well @ 859.9usft (Nomac #81)
Site:	P3 Pad	MD Reference:	well @ 859.9usft (Nomac #81)
Well:	P3N2	North Reference:	Grid
Wellbore:	Wellbore #1	Survey Calculation Method:	Minimum Curvature
Design:	Wellbore #1	Database:	EDM 5000.1 Single User Db

Survey	MD (usft)	Inc (°)	Azi (azimuth) (°)	TVD (usft)	N/S (usft)	E/W (usft)	Closure Distance (usft)	Closure Azimuth (°)
	5,221.0	12.10	15.10	5,162.3	-71.8	677.5	681.3	96.05
	5,268.0	12.70	353.50	5,208.2	-61.9	678.2	681.0	95.22
	5,315.0	13.10	335.70	5,254.0	-51.9	675.4	677.4	94.40
	5,363.0	16.60	335.60	5,300.4	-40.7	670.4	671.6	93.48
	5,410.0	20.00	334.50	5,345.0	-27.3	664.1	664.7	92.36
	5,457.0	24.50	333.60	5,388.5	-11.3	656.3	656.4	90.99
	5,504.0	28.70	334.40	5,430.5	7.6	647.1	647.2	89.33
	5,552.0	33.20	333.40	5,471.7	29.7	636.3	636.9	87.33
	5,599.0	37.40	333.60	5,510.0	54.0	624.1	626.5	85.05
	5,647.0	42.50	334.20	5,546.8	81.7	610.6	616.0	82.38
	5,694.0	47.60	335.30	5,580.0	111.8	596.4	606.8	79.39
	5,741.0	52.10	335.00	5,610.3	144.4	581.3	599.0	76.05
	5,788.0	55.70	333.40	5,638.0	178.5	564.8	592.3	72.46
	5,836.0	59.30	333.00	5,663.8	214.7	546.5	587.2	68.56
	5,883.0	62.60	333.40	5,686.6	251.3	528.0	584.8	64.55
	5,931.0	65.60	335.10	5,707.6	290.2	509.3	586.2	60.32
	5,978.0	68.70	333.50	5,725.8	329.2	490.5	590.7	56.13
	6,026.0	72.20	334.20	5,741.9	369.8	470.6	598.5	51.83
	6,073.0	74.50	334.10	5,755.3	410.4	450.9	609.7	47.70
	6,121.0	76.90	336.30	5,767.2	452.6	431.4	625.3	43.63
	6,168.0	79.80	337.90	5,776.7	495.0	413.5	645.0	39.88
	6,216.0	83.40	337.50	5,783.7	538.9	395.5	668.5	36.27
	6,263.0	85.80	337.40	5,788.1	582.1	377.6	693.8	32.97
	6,311.0	85.90	338.20	5,791.6	626.4	359.5	722.3	29.85
	6,358.0	89.00	337.30	5,793.7	669.9	341.7	752.0	27.02
	6,406.0	90.40	337.60	5,793.9	714.2	323.3	784.0	24.35
	6,501.0	89.50	334.90	5,794.0	801.2	285.0	850.4	19.58
	6,595.0	89.20	334.50	5,795.1	886.1	244.9	919.4	15.45
	6,689.0	89.80	331.80	5,795.9	970.0	202.4	990.9	11.79
	6,784.0	93.40	332.70	5,793.3	1,054.0	158.2	1,065.8	8.54
	6,878.0	90.90	334.20	5,789.7	1,138.0	116.2	1,144.0	5.83
	6,973.0	90.30	333.30	5,788.7	1,223.2	74.2	1,225.5	3.47
	7,068.0	90.60	334.00	5,788.0	1,308.4	32.0	1,308.8	1.40
	7,163.0	89.90	330.90	5,787.6	1,392.6	-11.9	1,392.6	359.51
	7,257.0	89.90	330.60	5,787.7	1,474.6	-57.8	1,475.7	357.75
	7,352.0	91.70	332.10	5,786.4	1,558.0	-103.4	1,561.4	356.20
	7,447.0	91.20	330.40	5,784.0	1,641.2	-149.0	1,648.0	354.81
	7,541.0	91.20	330.10	5,782.0	1,722.8	-195.7	1,733.9	353.52
	7,636.0	90.90	332.00	5,780.3	1,805.9	-241.7	1,822.0	352.38
	7,731.0	90.40	330.20	5,779.2	1,889.1	-287.6	1,910.8	351.34
	7,826.0	91.60	331.50	5,777.6	1,972.0	-333.8	2,001.1	350.39
	7,921.0	91.30	333.00	5,775.2	2,056.1	-378.0	2,090.5	349.58
	8,015.0	91.10	330.50	5,773.2	2,138.9	-422.5	2,180.2	348.83
	8,110.0	90.60	332.20	5,771.8	2,222.2	-468.1	2,271.0	348.11
	8,205.0	90.30	330.50	5,771.0	2,305.6	-513.6	2,362.1	347.44

RECEIVED
Office of Oil and Gas
JUN 03 2015
WV Department of Environmental Protection



QES Survey Certification Report



Company:	Jay-Bee Oil & Gas	Local Co-ordinate Reference:	Well P3N2
Project:	Pleasants County	TVD Reference:	well @ 859.9usft (Nomac #81)
Site:	P3 Pad	MD Reference:	well @ 859.9usft (Nomac #81)
Well:	P3N2	North Reference:	Grid
Wellbore:	Wellbore #1	Survey Calculation Method:	Minimum Curvature
Design:	Wellbore #1	Database:	EDM 5000.1 Single User Db

Survey	MD (usft)	Inc (°)	Azi (azimuth) (°)	TVD (usft)	N/S (usft)	E/W (usft)	Closure Distance (usft)	Closure Azimuth (°)
	8,299.0	91.20	330.60	5,769.8	2,387.4	-559.8	2,452.2	346.80
	8,394.0	91.40	331.70	5,767.6	2,470.6	-605.6	2,543.8	346.23
	8,489.0	90.70	331.10	5,765.9	2,554.0	-651.1	2,635.7	345.70
	8,583.0	90.60	330.40	5,764.8	2,636.0	-697.0	2,726.6	345.19
	8,678.0	90.80	330.60	5,763.7	2,718.7	-743.8	2,818.6	344.70
	8,773.0	90.80	333.70	5,762.4	2,802.7	-788.2	2,911.4	344.29
	8,867.0	90.30	333.50	5,761.4	2,886.9	-830.0	3,003.8	343.96
	8,962.0	90.10	333.20	5,761.1	2,971.8	-872.6	3,097.2	343.64
	9,057.0	89.50	332.60	5,761.4	3,056.3	-915.9	3,190.6	343.32
	9,152.0	91.20	333.30	5,760.9	3,140.9	-959.1	3,284.1	343.02
	9,247.0	90.60	333.00	5,759.4	3,225.7	-1,002.0	3,377.7	342.74
	9,342.0	90.30	334.00	5,758.6	3,310.7	-1,044.4	3,471.5	342.49
	9,436.0	89.60	333.00	5,758.7	3,394.8	-1,086.3	3,564.4	342.26
	9,531.0	90.90	333.20	5,758.3	3,479.5	-1,129.3	3,658.2	342.02
	9,626.0	90.60	331.80	5,757.1	3,563.8	-1,173.1	3,751.9	341.78
	9,721.0	90.40	332.10	5,756.2	3,647.6	-1,217.8	3,845.6	341.54
	9,815.0	89.90	332.00	5,756.0	3,730.7	-1,261.9	3,938.3	341.31
	9,910.0	89.70	331.40	5,756.3	3,814.3	-1,306.9	4,032.0	341.09
	10,005.0	91.00	330.40	5,755.7	3,897.3	-1,353.1	4,125.5	340.85
	10,100.0	90.80	330.00	5,754.2	3,979.7	-1,400.3	4,218.9	340.62
	10,195.0	90.70	329.70	5,753.0	4,061.9	-1,448.0	4,312.3	340.38
	10,290.0	91.40	332.00	5,751.3	4,144.8	-1,494.3	4,406.0	340.17
	10,385.0	91.40	333.80	5,748.9	4,229.4	-1,537.6	4,500.2	340.02
	10,480.0	91.00	332.30	5,746.9	4,314.0	-1,580.6	4,594.5	339.88
	10,574.0	90.70	332.70	5,745.5	4,397.4	-1,624.0	4,687.7	339.73
	10,669.0	90.10	330.50	5,744.9	4,481.0	-1,669.2	4,781.8	339.57
	10,764.0	90.80	334.80	5,744.1	4,565.3	-1,712.8	4,876.1	339.43
	10,859.0	90.70	334.80	5,742.9	4,651.3	-1,753.3	4,970.7	339.35
	10,954.0	90.40	333.80	5,742.0	4,736.9	-1,794.5	5,065.4	339.25
	11,048.0	90.50	334.30	5,741.2	4,821.4	-1,835.6	5,159.0	339.16
	11,143.0	90.60	335.10	5,740.3	4,907.3	-1,876.2	5,253.7	339.08
	11,238.0	89.90	334.80	5,739.9	4,993.3	-1,916.4	5,348.5	339.00
	11,333.0	90.90	332.40	5,739.3	5,078.4	-1,958.6	5,443.0	338.91
	11,427.0	90.20	331.60	5,738.4	5,161.4	-2,002.8	5,536.4	338.79
	11,522.0	90.30	333.20	5,737.9	5,245.6	-2,046.8	5,630.8	338.68
	11,617.0	89.80	332.60	5,737.9	5,330.2	-2,090.1	5,725.3	338.59
	11,711.0	89.40	332.90	5,738.5	5,413.7	-2,133.1	5,818.8	338.49
	11,806.0	91.20	331.80	5,738.0	5,497.9	-2,177.2	5,913.3	338.40
	11,901.0	90.60	333.00	5,736.5	5,582.1	-2,221.2	6,007.7	338.30
	11,996.0	90.00	327.90	5,736.0	5,664.7	-2,268.0	6,101.8	338.18
	12,090.0	90.90	329.10	5,735.3	5,744.8	-2,317.1	6,194.5	338.03
	12,185.0	89.80	327.80	5,734.7	5,825.8	-2,366.8	6,288.0	337.89
	12,280.0	91.10	329.60	5,734.0	5,906.9	-2,416.2	6,382.0	337.75
	12,375.0	90.80	329.00	5,732.4	5,988.6	-2,464.7	6,476.0	337.63

RECEIVED
 JUN 03 2019
 Office of Oil and Gas
 WV Department of
 Environmental Protection



QES Survey Certification Report



Company:	Jay-Bee Oil & Gas	Local Co-ordinate Reference:	Well P3N2
Project:	Pleasants County	TVD Reference:	well @ 859.9usft (Nomac #81)
Site:	P3 Pad	MD Reference:	well @ 859.9usft (Nomac #81)
Well:	P3N2	North Reference:	Grid
Wellbore:	Wellbore #1	Survey Calculation Method:	Minimum Curvature
Design:	Wellbore #1	Database:	EDM 5000.1 Single User Db

MD (usft)	Inc (°)	Azi (azimuth) (°)	TVD (usft)	N/S (usft)	E/W (usft)	Closure Distance (usft)	Closure Azimuth (°)
12,470.0	90.70	332.70	5,731.1	6,071.5	-2,510.9	6,570.3	337.53
12,565.0	90.50	332.90	5,730.1	6,156.0	-2,554.4	6,665.0	337.46
12,659.0	90.20	331.00	5,729.6	6,239.0	-2,598.6	6,758.5	337.39
12,754.0	91.10	333.80	5,728.5	6,323.2	-2,642.6	6,853.1	337.32
12,849.0	90.10	333.70	5,727.5	6,408.4	-2,684.6	6,948.0	337.27
12,944.0	91.20	334.10	5,726.4	6,493.7	-2,726.4	7,042.8	337.22
13,039.0	90.30	334.00	5,725.2	6,579.1	-2,767.9	7,137.6	337.18
13,133.0	91.20	333.30	5,723.9	6,663.3	-2,809.7	7,231.4	337.14
13,228.0	90.80	333.60	5,722.3	6,748.3	-2,852.1	7,326.2	337.09
13,323.0	90.90	334.80	5,720.9	6,833.8	-2,893.5	7,421.1	337.05
13,418.0	91.20	333.60	5,719.1	6,919.3	-2,934.8	7,516.0	337.02
13,513.0	91.00	332.20	5,717.3	7,003.9	-2,978.1	7,610.7	336.96
13,608.0	90.30	332.40	5,716.2	7,088.0	-3,022.2	7,705.4	336.91
13,626.0	90.40	331.30	5,716.1	7,103.8	-3,030.7	7,723.3	336.90
13,678.0	90.40	331.30	5,715.8	7,149.4	-3,055.7	7,775.1	336.86

TD @ 13678.0' MD / 5715.8' TVD

Measured Depth (usft)	Vertical Depth (usft)	Local Coordinates		Comment
		+N/-S (usft)	+E/-W (usft)	
470.0	470.0	4.1	2.2	First MWD Survey @ 470.0' MD / 470.0' TVD
13,678.0	5,715.8	7,149.4	-3,055.7	TD @ 13678.0' MD / 5715.8' TVD

RECEIVED
Office of Oil and Gas

JUN 03 2019

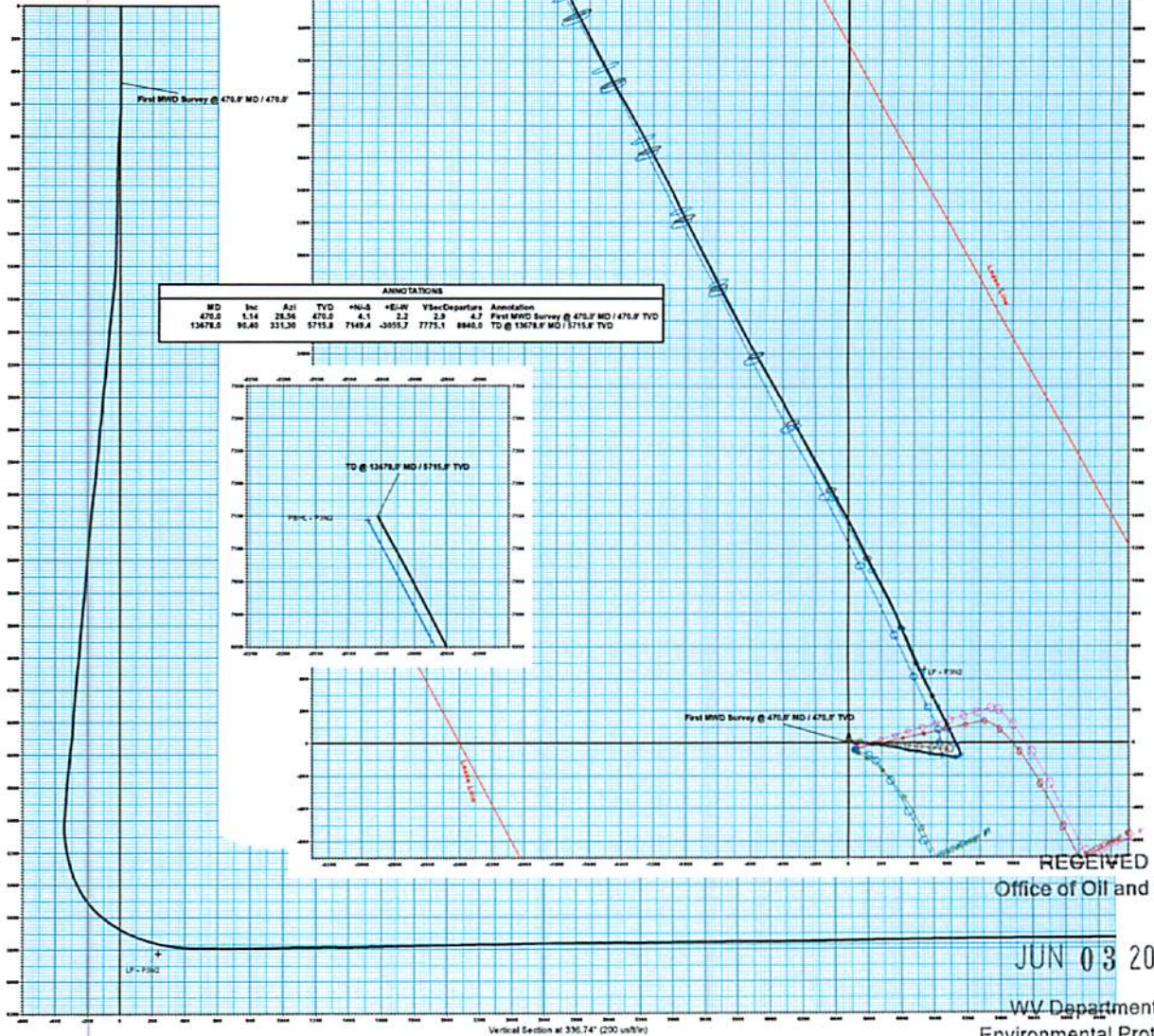
WV Department of
Environmental Protection

Company Name: Jay-Bee Oil & Gas
 P3N2
 Pleasants County
 Rig: Nomac #61
 Created by: Keith Noack
 Date: 7:09, October 14 2017

P3 Pad
 P3N2
 Q171299 & WT-171095
 Design #2

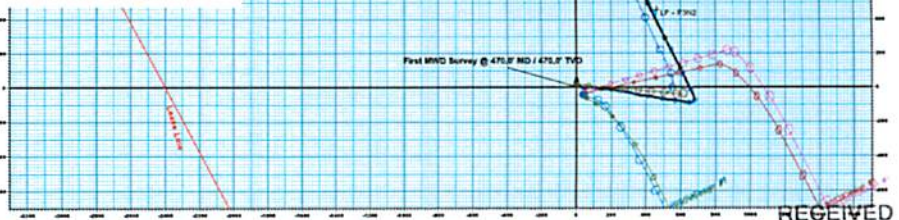
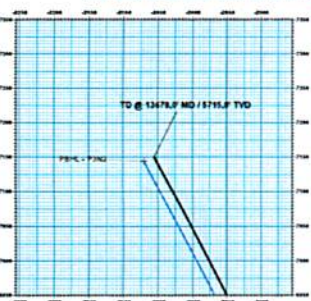
PROJECT DETAILS: Pleasants County
 Geodetic System: US State Plane 1983
 Datum: North American Datum 1983
 Ellipsoid: GRS 1980
 Zone: West Virginia Northern Zone
 System Datum: Mean Sea Level

WELL DETAILS: P3N2
 Ground Level: Ground Level: 839.3
 +N/-S +E/-W Northing Easting Latitude Longitude
 0.0 0.0 346189.67 1527709.13 39° 26' 26.842 N 81° 3' 39.016 W



ANNOTATIONS

MD	Inc	Azi	TVD	+N/-S	+E/-W	VSec	Departure	Annotation
470.0	1.14	28.56	470.0	6.1	2.2	2.9	4.7	First MWD Survey @ 470.0' MD / 470.0' TVD
13476.0	90.00	332.15	5715.8	7143.4	-3070.2	7775.1	8946.0	TD @ 13476.1' MD / 5715.8' TVD



RECEIVED
 Office of Oil and Gas

JUN 03 2019

WV Department of
 Environmental Protection

SECTION DETAILS

Sec	MD	Inc	Azi	TVD	+N/-S	+E/-W	Diag	TFace	V'Sect	Annotation
1	5899.0	37.40	333.60	5610.0	64.0	624.1	0.00	0.00	-198.8	Last MWD Survey
2	6647.0	42.50	334.20	5646.8	81.7	610.6	16.68	4.85	-166.0	Bit Projection - Build 8.24°/100'
3	6317.2	90.00	337.20	5770.0	644.9	404.3	8.34	4.07	341.0	EOB @ 90.00° Inc / 337.20° Azim - Turn 2°/100'
4	6469.8	90.00	332.15	5770.0	773.2	296.2	2.00	-80.00	591.4	EOT @ 332.15° Azim
5	13476.1	90.00	332.15	5770.0	7143.4	-3070.2	8.00	5.00	7775.4	TD @ 13476.1' MD / 5715.8' TVD

DESIGN TARGET DETAILS

Name	TVD	+N/-S	+E/-W	Northing	Easting	Latitude	Longitude
P3N2 - P3N2	5770.0	7143.4	-3070.2	352533.16	1524638.96	39° 26' 30.808 N	81° 4' 19.738 W
LP - P3N2	5827.0	457.2	462.8	346846.80	1528171.96	39° 26' 30.440 N	81° 3' 33.218 W

