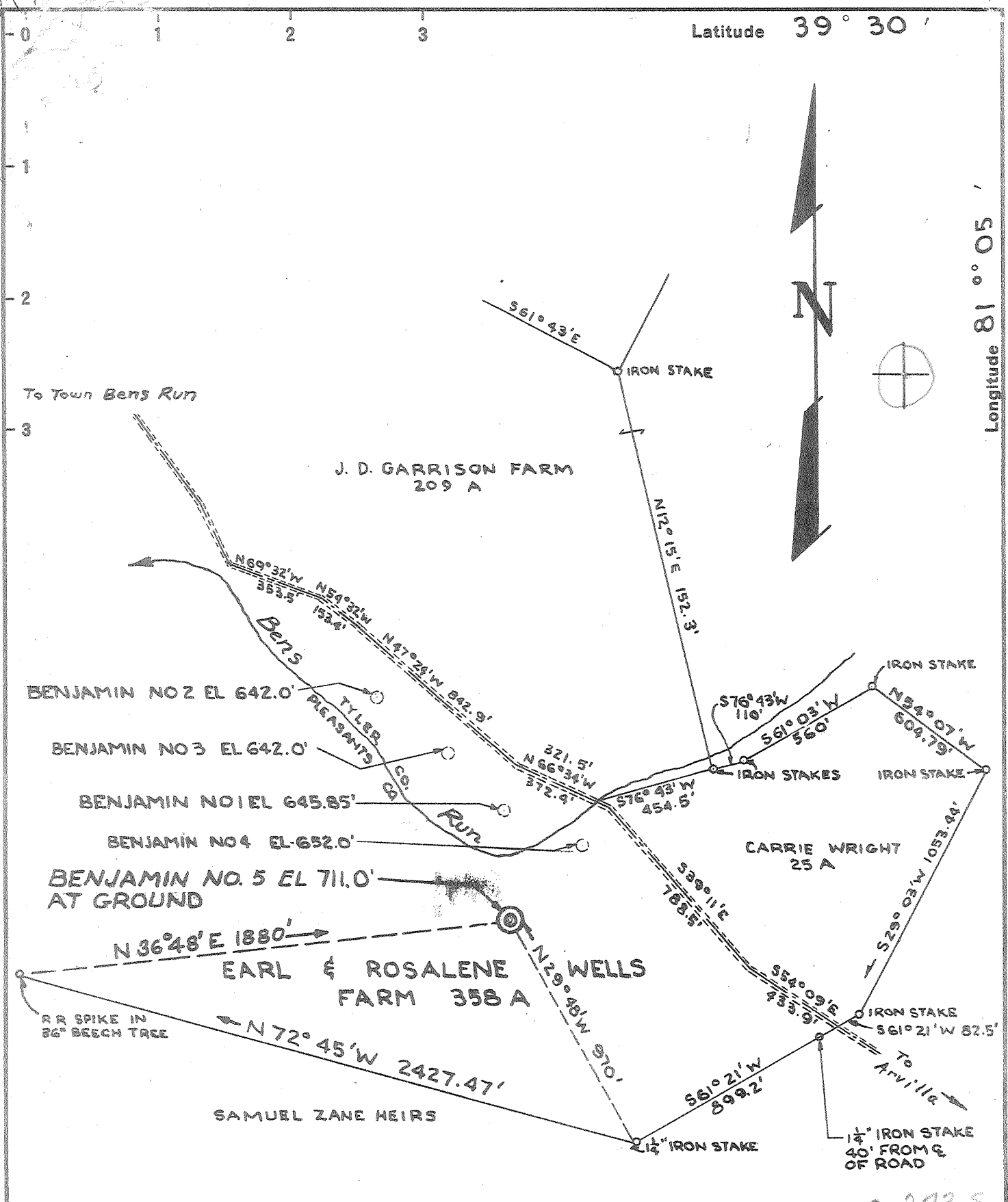


TCP



New Location.   
 Drill Deeper.....  
 Abandonment.....

REVISION OF MAP DATED FEB 27 1962  
 SAME LOCATION

~~3.02 S. 2.73-S~~  
~~0.68 W. 0.74-W~~  
 2 EC (F-7)

Company	FMC CORPORATION
Address	161 E 42ND ST. NEW YORK 17, N.Y.
Farm	EARL & ROSALENE WELLS
Tract	Acres 358 Lease No.
Well (Farm) No.	BENNO5 Serial No.
Elevation (Spirit Level)	711.0'
Quadrangle	ST. MARYS - NC
County	PLEASANTS District UNION
Engineer	<i>C. G. Hurdley</i>
Engineer's Registration No.	2572
File No.	Drawing No.
Date	JULY 6 1962 Scale 1" = 500'

STATE OF WEST VIRGINIA  
 DEPARTMENT OF MINES  
 OIL AND GAS DIVISION  
 CHARLESTON

WELL LOCATION MAP  
 FILE NO. PLCAS-612-Rev.

+ Denotes location of well on United States Topographic Maps, scale 1 to 62,500, latitude and longitude lines being represented by border lines as shown.  
 - Denotes one inch spaces on border line of original tracing.

"IMPERIAL" TRACING CLOTH  
 K & E CO., N. Y.

Samples 20 = 6300 Deep Well 8-0 80 Salt Brine Well

STATE OF WEST VIRGINIA  
DEPARTMENT OF MINES  
OIL AND GAS DIVISION

Quadrangle - St. Marys  
Permit No. PLEAS-612

## WELL RECORD

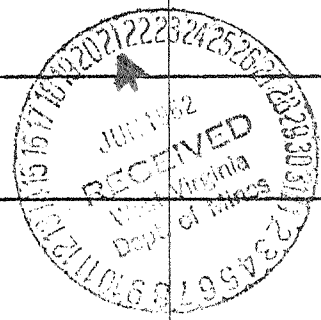
XXXXXX  
Oil or Gas Well Salt  
(Kind)

Company <u>FMC Corporation</u>	Casing and Tubing	Used in Drilling	Left in Well	Packers
Address <u>161 E. 42nd St., New York, NY</u>	Size	From KB		
Farm <u>Earl &amp; Rosalene Wells</u> Acres <u>358</u>	<del>20"</del>	<u>36</u>	<u>24</u>	Kind of Packer.....
Location (waters)..... <u>KG 724</u>	<del>16"</del>	<u>250</u>	<u>238</u>	Size of.....
Well No. <u>Benjamin No. 5</u> Elev. <u>Grd. 711</u>	<del>11 3/4"</del>	<u>1854</u>	<u>1842</u>	Depth set.....
District <u>Union</u> County <u>Pleasants</u>	<del>8 5/8"</del>	<u>6475</u>	<u>6464</u>	Perf. top.....
The surface of tract is owned in fee by <u>FMC Corporation</u>	6%.....			Perf. bottom.....
<u>161 E. 42nd St.</u> Address <u>New York, NY</u>	5 3/16.....			Perf. top.....
Sale Mineral rights are owned by <u>FMC Corporation</u>	3.....			Perf. bottom.....
<u>161 E. 42nd St.</u> Address <u>New York, NY</u>	2.....			
Drilling commenced <u>3-13-62</u>	Liners Used.....			
Drilling completed <u>5-28-62</u>				
Date shot..... Depth of shot.....				
Open Flow /10ths Water in..... Inch				
/10ths Merc. in..... Inch				
Volume..... Cu. Ft.				
Rock Pressure..... lbs..... hrs.				
Oil..... bbls., 1st 24 hrs.				
Fresh water..... feet..... feet				
Salt water <u>5722</u> feet..... feet				

CASING CEMENTED..... SIZE..... No. Ft..... Date  
**All casing cemented to surface**

COAL WAS ENCOUNTERED AT 640 FEET 60 INCHES  
750 FEET 24 INCHES 900 FEET 24 INCHES  
1350 FEET 24 INCHES..... FEET..... INCHES

Formation	Color	Hard or Soft	Top	Bottom	Oil, Gas or Water	Depth Found	Remarks
Sand & Shale (Pennsylvanian)	Green, Red, Black	Upper soft lower hard	0	1340			
Limestone (Greenbrier)	Gray to Black	Hard	1340	1390			
Sandstone, Shale and Siltstone (Pocono)	Tan to Dark gray	Hard	1390	2011	*		*Oil stain 1400 - 1470
Sands & Shales (Devonian)	Light gray to dark gray	Soft	2011	5456			
Shale (Marcellus)	Black	Soft	5456	5524			Radioactive shale
Huntersville Chert & Limestone (Onondaga)	Tan to brown	Hard	5524	5722	Water	5722	5524 724 4900
Sandstone (Oriskany)	White to dark gray	Hard	5722	5814			
Limestone Dolomite (Helderberg)	Tan to black	Soft	5814	6112			
Dolomite Anhydrite (Salina)	Gray to black	Hard	6112	6388			
Salt Dolomite Anhydrite (Salina)	Gray to black	Hard to soft	6388	6484			Salt @ 6388
				Total Depth			



(519)

*Sullivan file?*

Union District, Pleasants County, W. Va.

By FMC Corporation 161 E. 42nd St., New York, N. Y.

Drilled under permit No. Pleas-612.

On 352 acres.

Elevation NG 724'; Ord. 711'.

Surface and Salt owned by FMC Corporation, 161 E. 42nd St., New York, N. Y.

Drilling commenced 3-13-62; completed 5-28-62.

Casing: 20", 36'; 24' left in; 16", 250', 238' left in; 11-3/4", 1854'; 1842' left in; 8-5/8", 6475', 6464' left in. All casing cemented to surface.

Coal encountered at 640'60"; 750'24"; 900'24"; 1350'24".

Oil steins 1400-1470'. Radioactive shale 5456-5524'. Water 5722'. Salt at 6388'.

Salt well. Record to Dept. of Mines June 21, 1962.

Record from Allen July 3, 1962.

	Top.	Bottom.
Sand & Shale, (Pennsylvanian) Green, red, black; upper soft, lower hard	0	1340
Limestone (Greenbrier), gray to black, hard	1340	1390
Sandstone, shale & siltstone (Pocono) Tan to dark gray, hard	1390	2011
Sands & shales (Devonian) Light gray to dark gray, soft	2011	5456
Shale (Marcellus), black, soft	5456	5524
Huntersville Chert & Limestone (Onondaga) Tan to brown, hard	5524	5722
Sandstone (Criskany) white to dark gray, hard	5722	5814
Limestone Dolomite (Helderberg) tan to black, soft	5814	6112
Dolomite Anhydrite (Salina) gray to black, hard	6112	6388
Salt Dolomite Anhydrite (Salina) gray to black, hard to soft	6388	
Total Depth		6388

276'