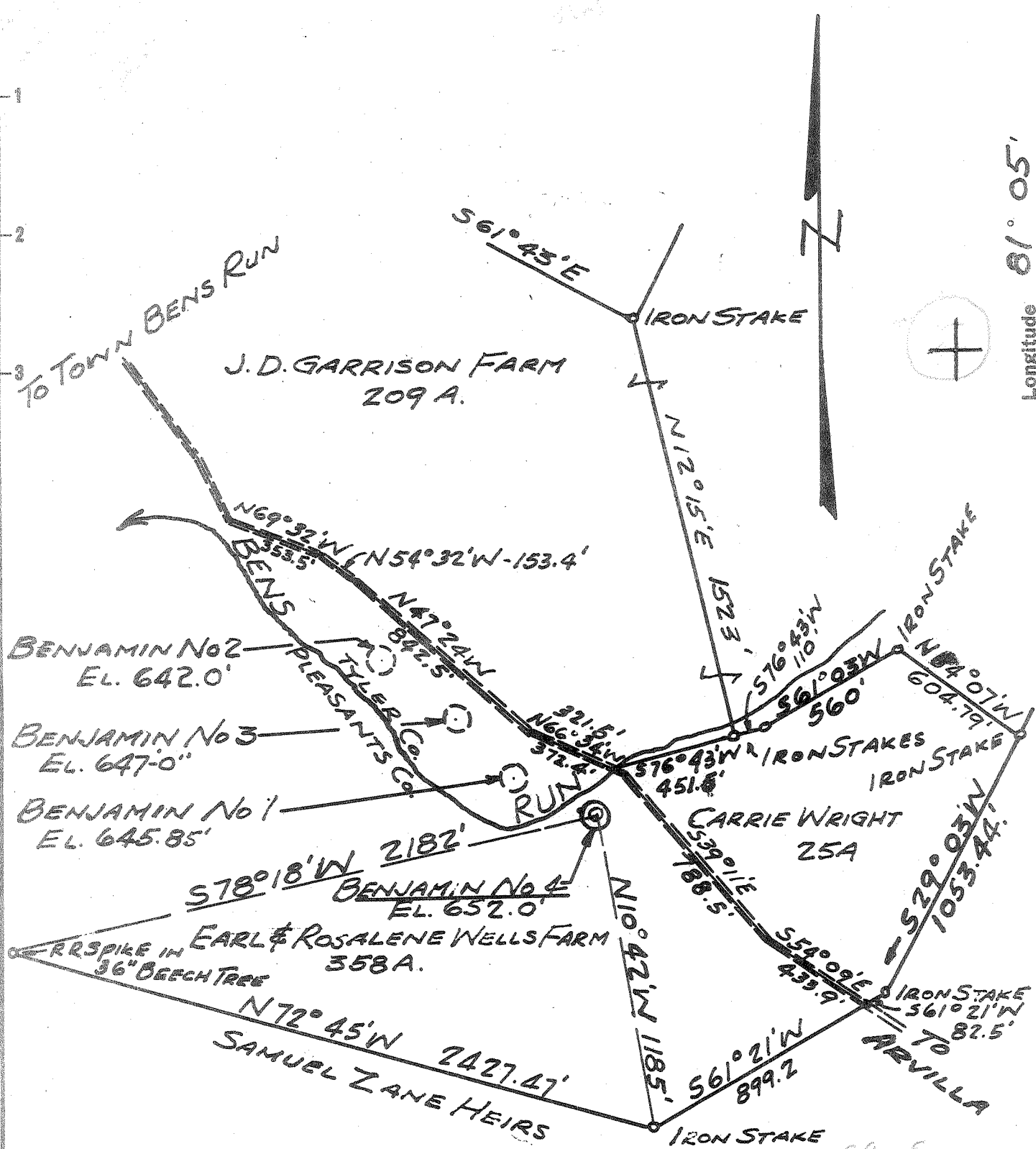


Latitude 39° 30'

Longitude 81° 05'



- New Location
- Drill Deeper
- Abandonment

2.98-S  
 30.60-W  
 5.62-W  
 2-EC (F-7)

Company FOOD MACHINERY & CHEMICAL CORP.  
 Address 161 E 42<sup>ND</sup> ST. NEW YORK, N.Y.  
 Farm EARL & ROSALENE WELLS  
 Tract \_\_\_\_\_ Acres 358 Lease No. \_\_\_\_\_  
 Well (Farm) No. BEN No 4 Serial No. \_\_\_\_\_  
 Elevation (Spirit Level) 652'  
 Quadrangle ST. MARYS-NE  
 County PLEASANTS District UNION  
 Engineer C. C. Hendley  
 Engineer's Registration No. 2572  
 File No. \_\_\_\_\_ Drawing No. \_\_\_\_\_  
 Date 11-5-59 Scale 1" = 500'

STATE OF WEST VIRGINIA  
 DEPARTMENT OF MINES  
 OIL AND GAS DIVISION  
 CHARLESTON

**WELL LOCATION MAP**  
 FILE NO. P1605-583

+ Denotes location of well on United States Topographic Maps, scale 1 to 62,500, latitude and longitude lines being represented by border lines as shown.  
 - Denotes one inch spaces on border line of original tracing.

No Samples  
 Deep Well 90 80



STATE OF WEST VIRGINIA  
DEPARTMENT OF MINES  
OIL AND GAS DIVISION 27

Quadrangle St. Marys

WELL RECORD

Salt  
GULCH GAS Well (KIND)

Permit No. PLEAS-583

Company Food Machinery & Chemical Corporation  
Address 161 East 42nd Street, New York 17, N. Y.  
Farm Earl & Rosalene Wells Acres 358

Location (waters) \_\_\_\_\_  
Well No. Benjamin No. 4 Elev. 652'  
District Union County Pleasants

The surface of tract is owned in fee by Food Machinery & Chemical Corporation Address New York  
Mineral rights are owned by Food Machinery & Chemical Corporation Address New York

Drilling commenced 11/17/59  
Drilling completed 1/1/60  
Date Shot \_\_\_\_\_ From \_\_\_\_\_ To \_\_\_\_\_  
With \_\_\_\_\_

Open Flow /10ths Water in \_\_\_\_\_ Inch  
/10ths Merc. in \_\_\_\_\_ Inch

Volume \_\_\_\_\_ Cu. Ft.

Rock Pressure \_\_\_\_\_ lbs. \_\_\_\_\_ hrs.

Oil \_\_\_\_\_ bbls., 1st 24 hrs.

Fresh water \_\_\_\_\_ feet \_\_\_\_\_ feet

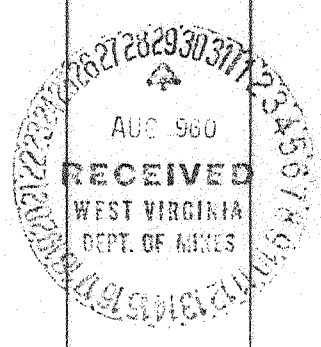
Salt water \_\_\_\_\_ feet \_\_\_\_\_ feet

Casing and Tubing	Used in Drilling	Left in Well	Packers
Size			
20"	41'		Kind of Packer
16"	180'		
11-3/4"	1805'		Size of
8-5/8"	6381'		
7" Securloy	33'		Depth set
5 3/16			
3			Perf. top
2			Perf. bottom
Liners Used			Perf. top
			Perf. bottom

CASING CEMENTED 11-3/4" SIZE 1805 No. Ft. 11/30/59 Date  
7" Plus 8-5/8" 6414 1/3/60

COAL WAS ENCOUNTERED AT \_\_\_\_\_ FEET \_\_\_\_\_ INCHES  
None Recorded  
\_\_\_\_\_ FEET \_\_\_\_\_ INCHES FEET \_\_\_\_\_ INCHES  
\_\_\_\_\_ FEET \_\_\_\_\_ INCHES FEET \_\_\_\_\_ INCHES

Formation	Color	Hard or Soft	Top	Bottom	Oil, Gas or Water	Depth Found	Remarks
ALL FORMATION DATA TAKEN FROM DRILLER'S RECORDS							
GRAVEL	NO	NO	0	40			
GRAVEL SANDSTONE			40	56			
SANDSTONE	RECORD	RECORD	56	115			
SHALE Limestone			115	125			
SHALE SANDSTONE			125	172			
SHALE Limestone SILTSTONE SANDSTONE	"	"	172	690			
SILTSTONE Limestone			690	839			
SHALE			839	924			
SILTSTONE SHALE			924	1056			
SANDSTONE SHALE			1056	1330			
SANDSTONE			1330	1387			
SANDSTONE SHALE			1387	1469			
SANDSTONE	"	"	1469	1785			



Formation	Color	Hard or Soft	Top <sup>27</sup>	Bottom	Oil, Gas or Water	Depth Found	Remarks
SANDSTONE SHALE			1785	1970			
SILTSTONE	NO	NO	1970	2030			
SANDSTONE SHALE	RECORD	RECORD	2030	2142			
SHALE			2142	2300			
SILTSTONE SANDSTONE			2300	2490			
SHALE SILTSTONE			2490	2995			
SHALE SANDSTONE			2995	3305	5455 652	5985 652	
SHALE			3305	5455	4803	5333	
LIMESTONE	"	"	5455	5660			
LIMESTONE SANDSTONE			5660	5711			
SANDSTONE			5711	5985			
LIMESTONE SANDSTONE			5985	6015			
LIMESTONE			6015	6044			
SANDSTONE			6044	6079			
DOLOMITE LIMESTONE			6079	6084			
LIMESTONE			6084	6090			
DOLOMITE			6090	6107			
DOLOMITE ANHYDRITE LIMESTONE			6107	6313			
SALT		Soft to medium	6313	6376			W/Anhydrite bands & Anhydrite inclusion
ANHYDRITE		Hard	6376	6395			W/Some intergal dolomite
SALT	Clear	Soft	6395	6401			
ANHYDRITE		Hard	6401	6403			
SALT		Soft	6403	6409			
ANHYDRITE DOLOMITE		Med. hard	6409	6414			
				6414 Total Depth			
				(519)			

Date August 26, 1960

APPROVED FOOD MACHINERY & CHEM. CORPORATION, Owner

By \_\_\_\_\_ Project Engineer  
(Title)

EARL AND ROSALENE WELLS NO. 4(BENJ.) WELL

Union District, Pleasants Co., W. Va.

By Food Machinery and Chem. Corp., 161 E. 42nd St., New York 17, N.Y.

Drilled under permit Pleas-583; St. Marys Quad.

On 358 acres

Elevation 652' L.

Surface owned by Food Machinery and Chem. Corp., New York, minerals by same for salt rights.

Drilling commenced 11/17/59; completed 1/1/60

Salt Well.

20" casing 41' pulled; 15", 180' pulled; 11 3/4", 1805' pulled; 8 5/8", 6381' pulled; 7" Securloy 33' pulled.

11 3/4" casing 1805', 11/30/59, 7" plus 8 5/8", 6914', 1/3/60.

No coal recorded.

Record to Dept. of Mines Aug. 29, 1960

Record from Allen Sept. 12, 1960

	Top	Bottom
<u>All formation data taken from driller's records:</u>		
Gravel	0	40
Gravel sandstone	40	56
Sandstone	56	115
Shale limestone	115	125
Shale limestone	125	172
Shale limestone, siltstone, sandstone	172	690
Siltstone, limestone	690	839
Shale	839	924
Siltstone, shale	924	1056
Sandstone, shale	1056	1330
Sandstone	1330	1387
Sandstone, shale	1387	1469
Sandstone	1469	1785
Sandstone, shale	1785	1970
Siltstone	1970	2030
Sandstone, shale	2030	2142
Shale	2142	2300
Siltstone, sandstone	2300	2490
Shale, siltstone	2490	2995
Shale, sandstone	2995	3305
Shale	3305	5455
Limestone	5455	5660
Limestone, sandstone	5660	5711
Sandstone	5711	5985
Limestone, sandstone	5985	6015
Limestone	6015	6044
Sandstone	6044	6079
Dolomite, limestone	6079	6084
Limestone	6084	6090
Dolomite	6090	6107
Dolomite, limestone, anhydrite	6107	6313
Salt, soft to medium (with anhydrite bands and anhydrite inclusion)	6313	6376
Anhydrite, hard	6376	6395
Salt, clear soft	6395	6401
Anhydrite, hard	6401	6403
Salt, soft	6403	6409
Anhydrite, dolomite, med. hard	6409	6414
TOTAL DEPTH		6414