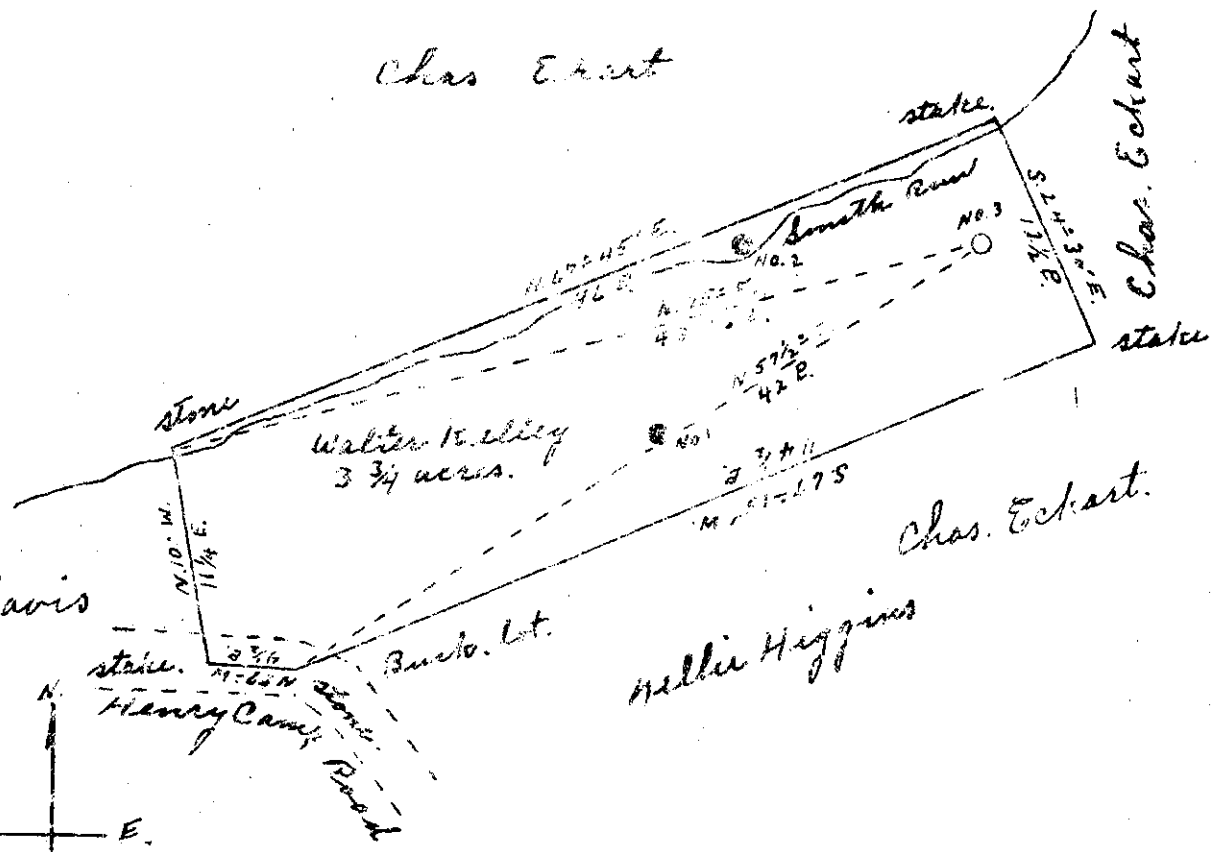


2.57S  
0.33W



ABD  
1/52

Crowded

- New Location
- Drill Deeper
- Abandonment

Company P. G. Higgins  
 Address Belmont W. Va.  
 Farm Walter Kelley  
 Tract \_\_\_\_\_ Acres 3 3/4 Lease No. \_\_\_\_\_  
 Well (Farm) No. 3 Serial No. \_\_\_\_\_  
 Elevation (Spirit Level) 617'  
 Quadrangle Marquette  
 County Pleasants District Grant  
 Engineer Robert R. Anderson  
104 9th Street, S.W.  
 Engineer's Registration No. 296  
 File No. \_\_\_\_\_ Drawing No. \_\_\_\_\_  
 Date MAR. 28 1950 Scale 1" = 10 P.

STATE OF WEST VIRGINIA  
 DEPARTMENT OF MINES  
 OIL AND GAS DIVISION  
 CHARLESTON

WELL LOCATION MAP  
 FILE NO. PLEAS-355

- + Denotes location of well on United States Topographic Maps, scale 1 to 62,500, latitude and longitude lines being represented by border lines as shown.
- Denotes one inch spaces on border line of original tracing.

WEST VIRGINIA DEPARTMENT OF MINES  
OIL & GAS DIVISION  
W E L L R E C O R D

Permit No. Pleas 355

Oil Well  
CASING & TUBING

Marietta Quad.

Company

B.E. Higgins

Address

Belmont, W.Va.

Farm

Walter Kelly Acres 4½

Location

	8½	44	44
	6 5/8	167	167

Well No.

3 Elev. 317'

	5 3/16	382	
	2	520	

District

Grant Pleasants County

Surface

Walter Kelly, Belmont, W.Va.

Mineral

Walter Kelly, Belmont, W.Va.

Commenced

April 1, 1950

Completed

April 24, 1950

Oil

3 bbls. 1st 24 hrs.

Fresh Water

60°

Salt Water

210-408'

Gravel			0	44
Lime Blk	Blk	H	44	54
Shale Blk	Blk	S	54	75
Red Rock		S	75	120
Slate Blk	Blk	S	120	167
Slate Blk	Blk	H	167	183
Sand Wh	Wh	H	183	230
Slate Wh	Wh	S	230	377
Shale Blk	Blk	S	377	405
Sand Wh	Wh	H	405	430
Slate Blk	Blk	H	430	450
Sand Wh	Wh	H	450	470
Slate Blk	Blk	H	470	480
Sand Wh	Wh	H	480	528

Oil and water 210

Oil and water 408