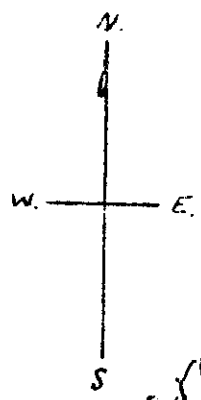
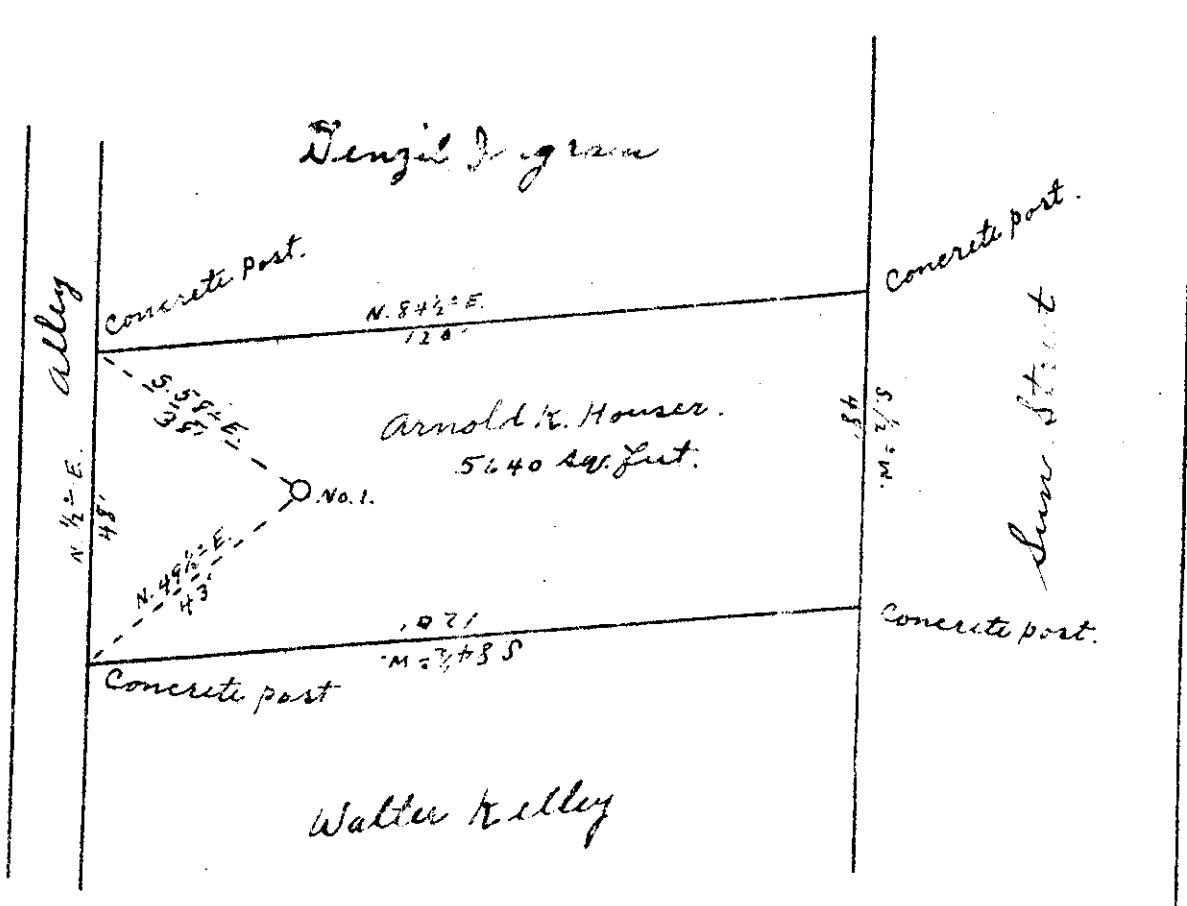


2.49 S  
C.41 W



Crowded

New Location    
 Drill Deeper    
 Abandonment

Company B. C. Dotson  
 Address Belmont W. Va.  
 Farm Arnold K. Houser  
 Tract \_\_\_\_\_ Acres 5640<sup>sq. feet</sup> Lease No. \_\_\_\_\_  
 Well (Farm) No. 1 Serial No. \_\_\_\_\_  
 Elevation (Spirit Level) 622'  
 Quadrangle Maritta  
 County Pleasants District Grant  
 Engineer Robert K. Anderson  
 By Jno. Triplett, Surveyor  
 Engineer's Registration No. 296  
 File No. \_\_\_\_\_ Drawing No. \_\_\_\_\_  
 Date Mar. 15 1950 Scale 1" = 30'

STATE OF WEST VIRGINIA  
 DEPARTMENT OF MINES  
 OIL AND GAS DIVISION  
 CHARLESTON

WELL LOCATION MAP  
 FILE NO. PLEAS-352

+ Denotes location of well on United States Topographic Maps, scale 1 to 62,500, latitude and longitude lines being represented by border lines as shown.  
 - Denotes one inch spaces of border lines of original tracing.

WEST VIRGINIA DEPARTMENT OF MINES  
OIL & GAS DIVISION  
W E L L R E C O R D

Permit No. Pleas 352  
Marietta Quad.

Oil Well  
CASING & TUBING

Company Bell C. Dotson  
Address Belmont, Box 81  
Farm Town Lot (Houser) Acres 1.0  
Location  
Well No. 1 Elev. 622'  
District Grant Pleasant County  
Surface Arnold Houser, Belmont, W.Va.  
Mineral  
Commenced April 2, 1950  
Completed April 10, 1950  
Oil One bbls. 1st 24 hrs.  
Fresh Water 95'

	8 1/4	90-	90
	6 5/8	120	120
	2		440

Gravel, Sand	S		0	90	
Sand Gr	S		90	100	
Shale Wh	S		100	120	
Sand Wh	S		120	125	Oil 130
Slate Dk	S		135	220	
Sand Gr	S		220	320	
Slate Dk	S		320	410	
Sand Wh	S		410	440	Oil 435-440