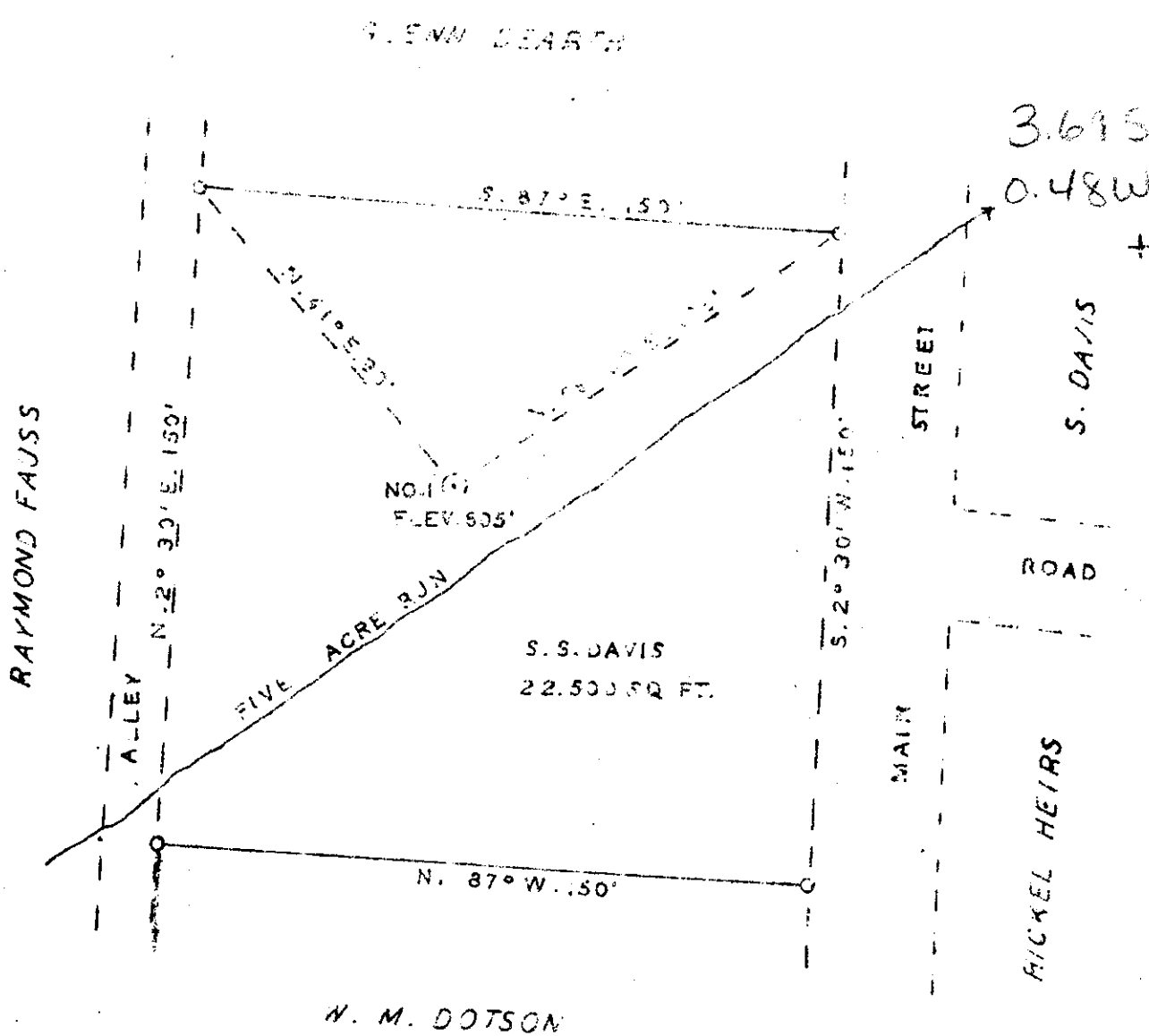


Latitude 39° 25'

Longitude 81° 15'



New Location
 Drill Deeper
 Abandonment

BELMONT W. VA.

Crowded

Company	MARVIN WILLIG
Address	BOX 27 PIKE W. VA
Farm	S. S. DAVIS
Tract	22500 SQ. FT.
Acres	Lease No.
Well (Farm) No.	Serial No.
Elevation (Spirit Level)	605' 00"
Quadrangle	MARIETTA
County	PLEASANTS District GRANT
Surveyed by	Homer W. Myers
Engineer	George R. Clarke
Engineer's Registration No.	102
File No.	Drawing No.
Date	FEB. 21. 1950 Scale 1" = 40'

STATE OF WEST VIRGINIA
 DEPARTMENT OF MINES
 OIL AND GAS DIVISION
 CHARLESTON

WELL LOCATION MAP
 FILE NO. PLEAS-350

+ Denotes location of well on United States Topographic Maps, scale 1 to 62,500, latitude and longitude lines being represented by border lines as shown.
 - Denotes one inch spaces on border line of original tracing.

WEST VIRGINIA DEPARTMENT OF MINES
OIL & GAS DIVISION
W E L L R E C O R D

Permit No. Pleas 350
Marietta Quad.

Oil Well
CASING & TUBING

Company	Marvin Willig			
Address	Box 27, Pike, W.Va.			
Farm	S.S. Davis A 22,500 Sq. Ft.	10	10	10
Location	Five Acre Run	8 1/2	53'8	53'8
Well No.	1 Elev. 607'	6 5/8	160	160
District	Grant Pleasants County	2		505
Surface	S.S. Davis, Belmont, W.Va.			
Mineral	Same			
Commenced	March 23, 1950			
Completed	April 14, 1950			
Date shot	April 14 Depth 482 to 492 with 10 qts. nitro-glycerin 17 bbls. 1st 24 hrs.			
Oil				
Fresh Water	50'			
Salt Water	400'			

Soil	Red	S	0	10
Sand	Gr	H	10	40
Gravel	Gr	H	40	53
Slate	Gr	H	53	63
Sand	Gr	H	63	90
Slate	Gr	M	90	100
Shale	Red	S	100	110
Shale	Gr	S	110	150
Lime	Gr	H	150	160
Shells	Gr	H	160	175
Sand	Gr	H	175	235
Shells	Gr	H	235	300
Shale	Br	S	300	344
Lime	Gr	H	344	350
Slate	Wh	S	350	380
Shells	Gr	H	380	390
Sand	Wh	H	390	480
Slate	Blk	S	480	485
Sand	Wh Salt	H	485	510

Oil 400'
Oil 485' best oil
T.D.

510