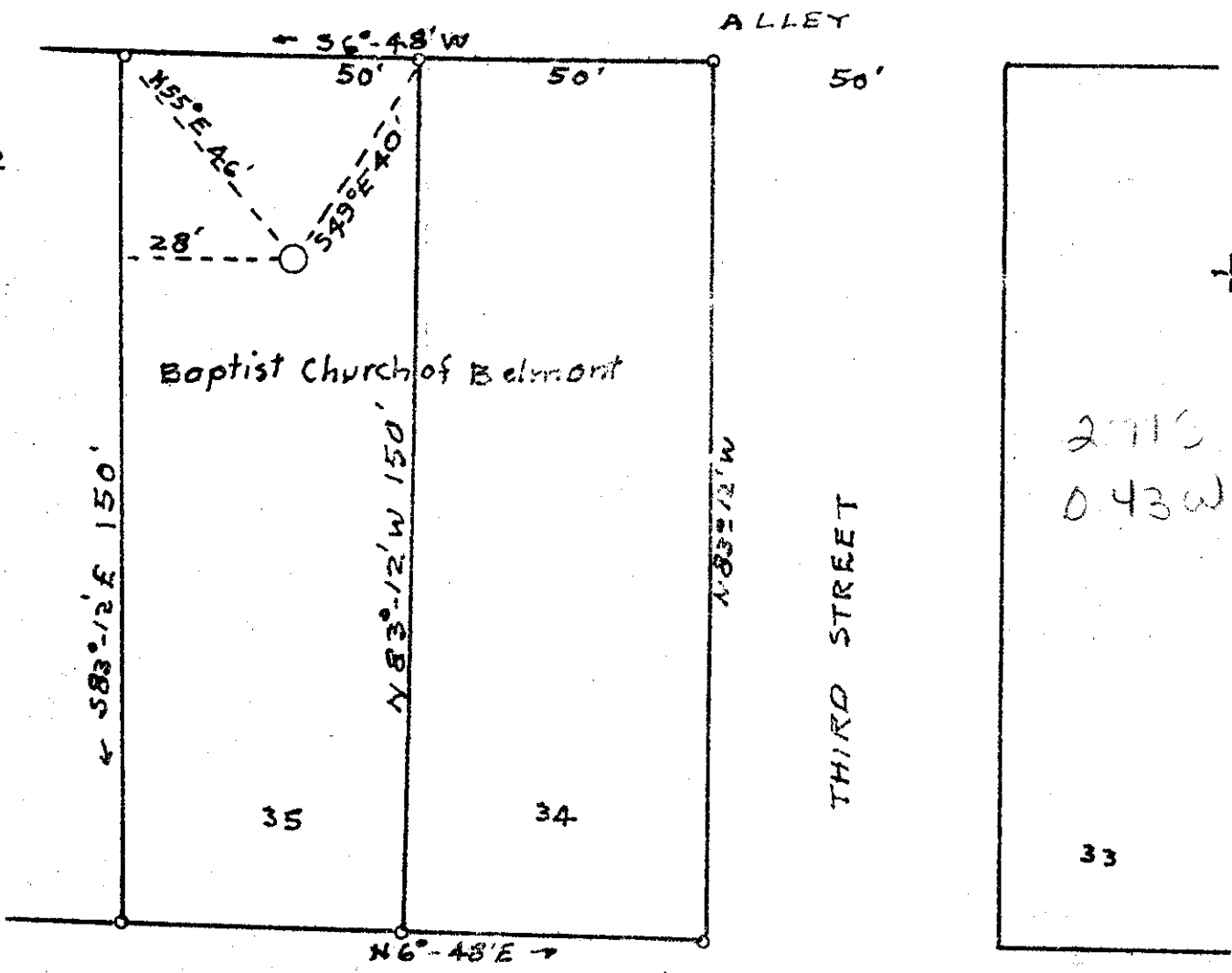
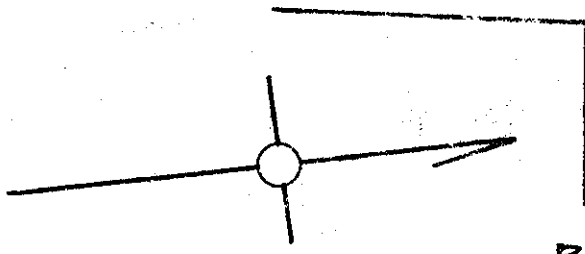


Latitude 39°-25'

Longitude 81°-15'



Crowded



BELMONT, W.VA.

NEW LOCATION

COMPANY: Carroll Weaver
 ADDRESS: Knox, Pa. R.F.D.
 FARM: Belmont Baptist Church
 TRACT: Town Lots 34 & 35 LEASE NO.
 WELL NO. 1 SERIAL NO.
 ELEVATION. 621
 QUADRANGLE: Marietta
 COUNTY: Pleasants DISTRICT: Grant
 ENGINEER: George R. Glaser
 ENGINEER'S NO. 102
 FILE NO. DRAWING NO.
 DATE: 2-25-50 SCALE: 1" = 30'

WELL LOCATION ON MAP
PLEAS-348

WEST VIRGINIA DEPARTMENT OF MINES
OIL & GAS DIVISION
W E L L R E C O R D

Permit No. Pleas 348

Oil Well
CASING & TUBING

Marietta Quad.				
Company	Carroll Weaver			
Address	Knox, Pa. R.D.	8 1/4	88	88
Farm	Baptist Church	6 5/8	187	187
Location	Acres 2 lots	2		480
Well No.	One			
District	Elev. 621'			
Surface	Grant Pleasants County			
Mineral	Baptist Church, Belmont			No coal
Commenced	Carroll Weaver, Knox, Pa. R.D.			
Completed	March 15, 1950			
Open flow	March 23, 1950			
Rock Pressure	18 lbs. 1st --- hrs.			
Oil	3 bbls. 1st 24 hrs.			
Fresh Water	95°			
Salt Water	188°			

Sand and Gravel	Br	Cavey	0	88	
Sand Lt	M		88	110	
Slate & Shale	M.Dk	S	110	186	
Sand Lt	S		186	188	Nice Sand
Slate & Shells	M.Dk	S	188	215	
1st Salt Sand	M.Lt	M.H	215	262	
Slate-Shell	M.Dk	M.S	262	422	
2nd Salt	M.Lt	M.S.	422	461	
Shelly Lime	Dk	M.H	461	481	
T.D.				481	

Small Oil 186-188

Show oil 231-244

Water ,Oil, Gas 425-459 run fairly even