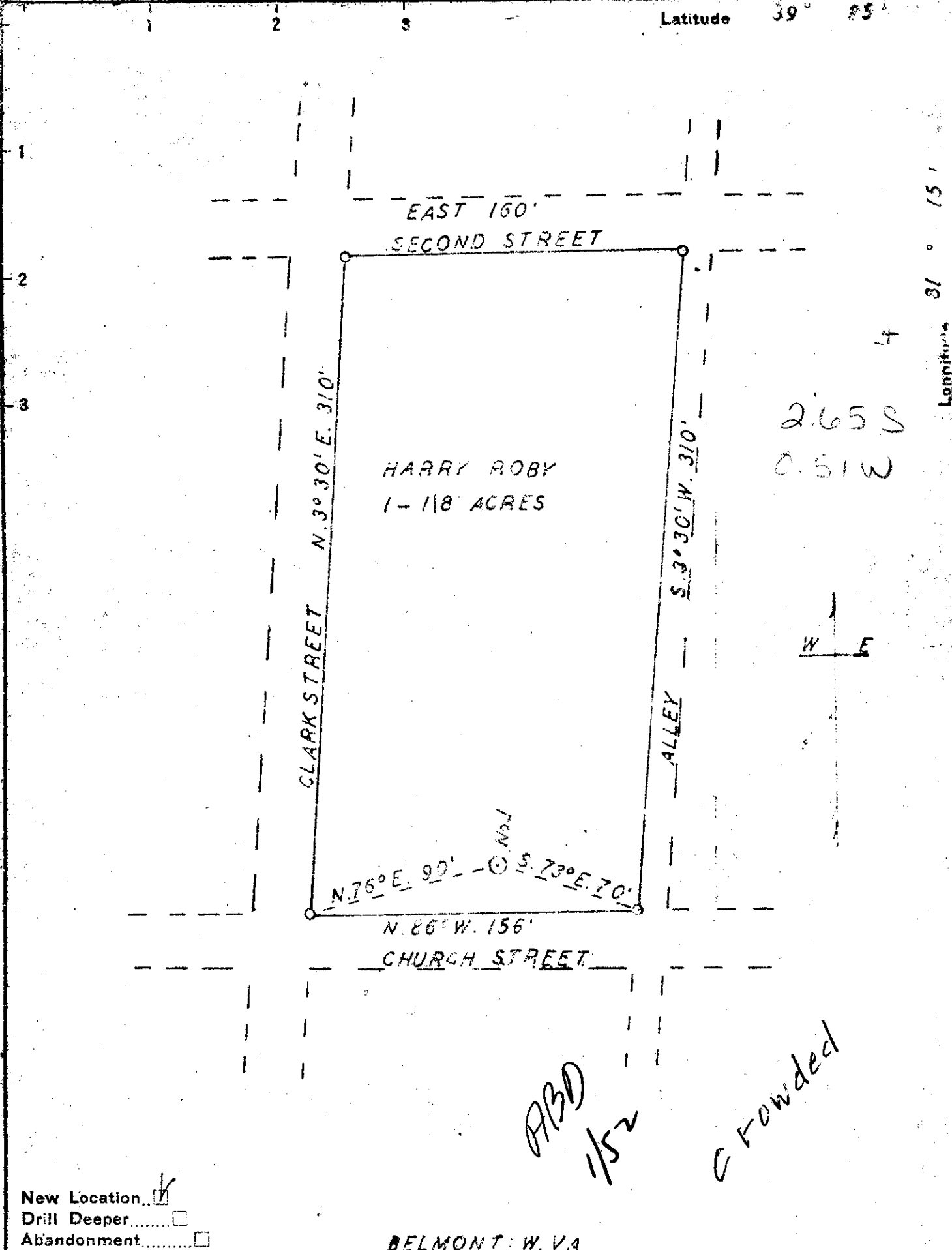


M

Latitude 39° 25'



ABD
1/52
Crowded

New Location
 Drill Deeper
 Abandonment

BELMONT W. VA.

Company MARVIN WIELIG
 Address BOX 27, PIKE W. VA.
 Farm HARRY ROBY
 Tract L Acres 1-1/8 Lease No. _____
 Well (Farm) No. L Serial No. _____
 Elevation (Spirit Level) 621' 00"
 Quadrangle MARIETTA
 County PLEASANTS District GRANT
 Surveyed by Wm. W. Myers
 Engineer George R. Clarke
 Engineer's Registration No. 107
 File No. _____ Drawing No. _____
 Date FEB. 7, 1950 Scale 1" = 60'

STATE OF WEST VIRGINIA
 DEPARTMENT OF MINES
 OIL AND GAS DIVISION
 CHARLESTON

WELL LOCATION MAP
 FILE NO. PLC S-322

+ Denotes location of well on United States Topographic Maps, scale 1 to 62,500, latitude and longitude lines being represented by border lines as shown.

- Denotes one inch spaces on border lines of original tracing.

WEST VIRGINIA DEPARTMENT OF MINES
OIL & GAS DIVISION
WELL RECORD

Permit No. Pleas 322

Gas Well
CASING & TUBING

Marietta Quad.				
Company	Marvin Willig			
Address	Box 27, Pike, W.Va.	10	10	10
Farm	Harry Roby et ux Acres 1	8½	96	96
Location	Ohio River	6 5/8	178	178
Well No.	1 Elev. 622'	2		595
District	Grant Pleasants County			
Surface	Harry Roby et ux, Belmont, W.Va.			
Mineral	Same			Casing not cemented
Commenced	Feb. 21, 1950			
Completed	Feb. 28, 1950			
Not shot				
Open flow	2/10ths W in 1"			
Volume	14000			
Rock Pressure	90 lbs. 24 hrs.			
Oil	27 bbls. 1st 24 hrs.			
Fresh Water	90'			

Gravel Gr	S	0	86
Slate Blk	S	86	130
Red Rock	S	130	160
L. Shells Gr	H	160	218
Sand Wh	H	218	265
L. Shells Gr	H	265	278
Lime Wh	H	278	295
L. Shells Gr	H	295	423
Sand Wh	H	423	460
L. Shells Gr	H	460	477
Sand Wh	H	477	495
L. Shells Gr	H	495	515
Sand Wh	M	515	595
Slate Blk	S	595	597 T.D.

Gas 230

Oil 423

Oil 573-578 best oil