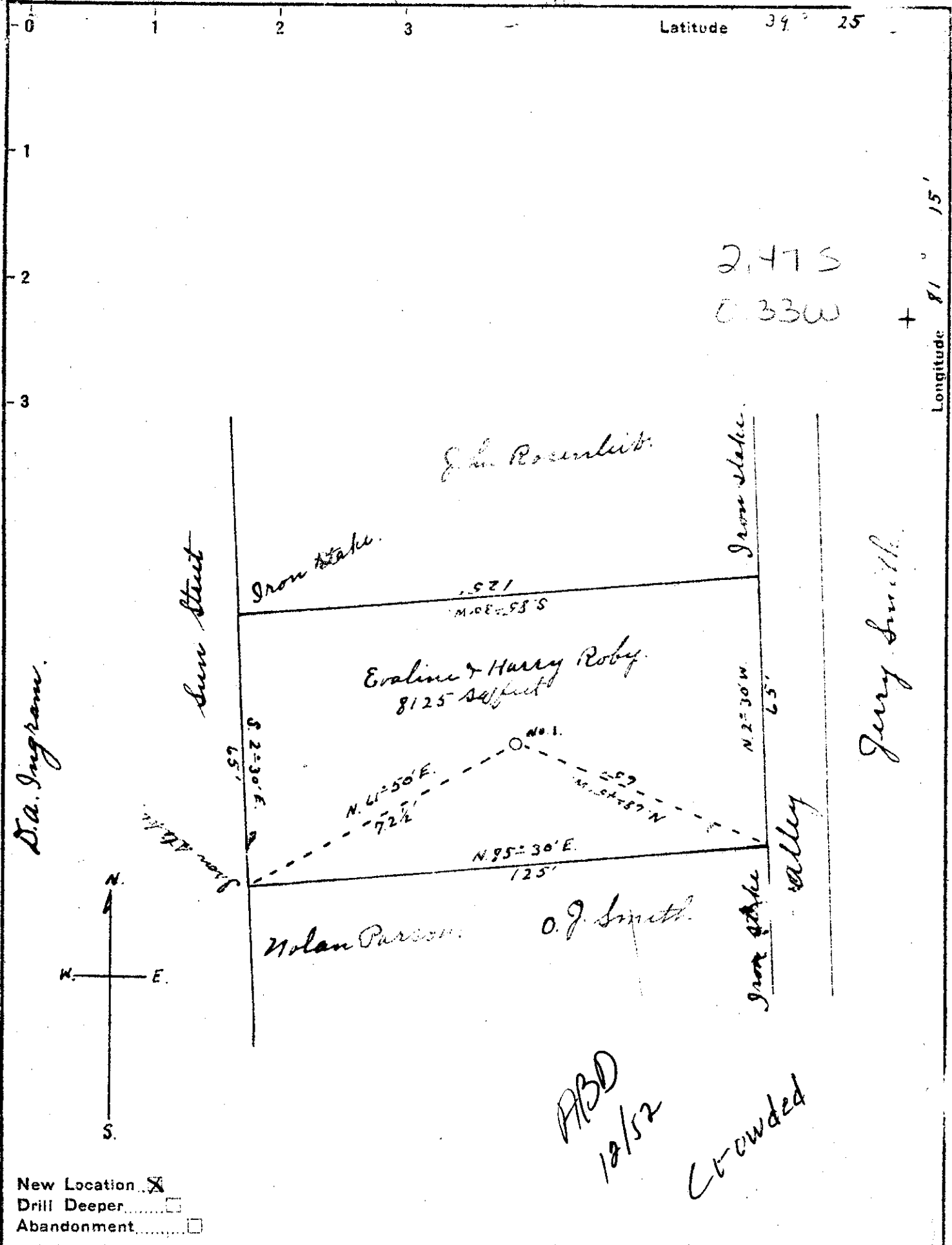


M



New Location
 Drill Deeper
 Abandonment

Company Reynolds Bros.
 Address Route 3 St. Marys W. Va.
 Farm Evaline & Harry Roby
 Tract _____ Acres 8125 sq feet Lease No. _____
 Well (Farm) No. 1 Serial No. _____
 Elevation (Spirit Level) 622'
 Quadrangle Murietta
 County Pleasants District Grant
 Engineer Robert R. Anderson
 By Jno. Triplett, Surveyor
 Engineer's Registration No. 226
 File No. _____ Drawing No. _____
 Date Feb 7 1950 Scale 1" = 30'

STATE OF WEST VIRGINIA
 DEPARTMENT OF MINES
 OIL AND GAS DIVISION
 CHARLESTON

WELL LOCATION MAP
 FILE NO. PLCAS-320

+ Denotes location of well on United States Topographic Maps, scale 1 to 62,500, latitude and longitude lines being represented by border lines as shown.
 - Denotes one inch spaces on border line of original tracing

WEST VIRGINIA DEPARTMENT OF MINES
OIL & GAS DIVISION
W E L L R E C O R D

Permit No. Pleas 320

Oil Well
CASING & TUBING

Marietta Quad.

Company

Wright Bros. & Hughes

Address

R.D. #1, Box 134, Burgettstown, Penna.

Farm

Harry Roby Acres 1/2

Location

Ohio River

Well No.

1 Elev. 622'

8 1/4 92'6 92'6

District

Grant Pleasants County

6 5/8 187'8 187'6

Surface

Harry Roby, Belmont, W.Va.

2 668' 688'

Mineral

Same

Perf. bottom 4'

Commenced

Feb. 2, 1950

Completed

Sept. 19, 1950

Casing cemented-No

Oil

45 bbls. 1st 24 hrs.

Fresh Water

62'

No coal

Salt Water

267'; 612'

Sand Gravel		Br	0	91
Shale	Bl	S	91	126
Sand	Gr	H	126	166
Lime	Wh	S	166	191
Slate	Dk	S	191	241
Sand	Br	S	241	256
Sand	Wh	M	256	266
Sand	Gr	H	266	297
Sand	Wh	H	287	462
Shale	Dk	M	462	512
Sand	Dk Gr	H	512	573
Slate	Dk	S	573	593
Sand	Wh	H	593	632
Shale	Bl	M	632	658
Sand	Wh	H	658	678
T.D.				678

Oil 277' good showing

Oil 668' good showing