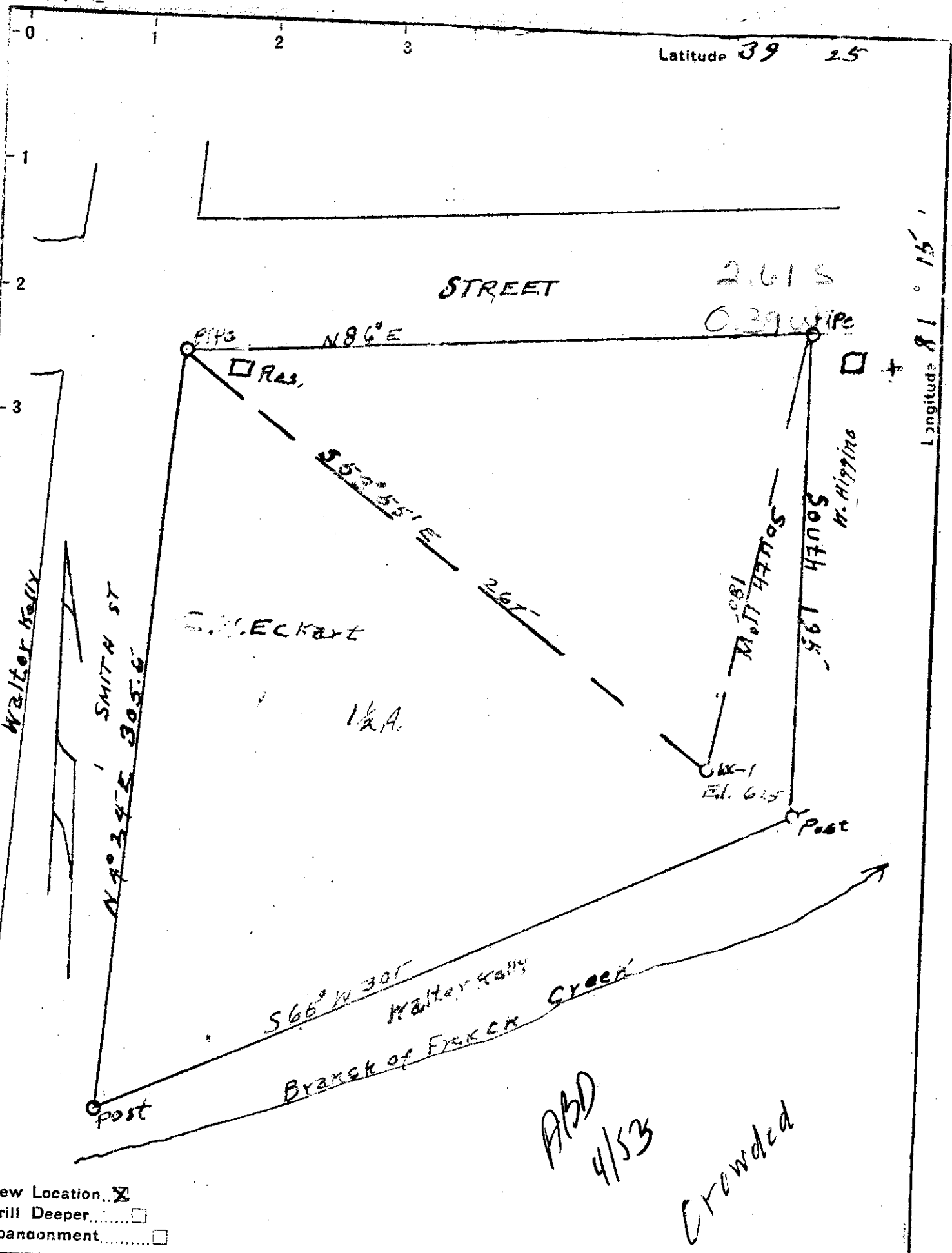


M



New Location
 Drill Deeper
 Abandonment

Company LOWTHER & NOHE
 Address 956 LEXINGTON PARKERSBURG, W. VA.
 Farm C. W. ECKART
 Tract _____ Acres 1/2 Lease No. _____
 Well (Farm) No. 1 Serial No. _____
 Elevation (Spirit Level) 625'
 Quadrangle ST. MARY'S Marquette
 County PLEASANTS District GRANT
 Engineer Robert R. Anderson
 Engineer's Registration No. 296
 J. E. Anderson
 File No. _____ Drawing No. _____
 Date 1-11-60 Scale 1 in = 60 ft.

STATE OF WEST VIRGINIA
 DEPARTMENT OF MINES
 OIL AND GAS DIVISION
 CHARLESTON

WELL LOCATION MAP
 FILE NO. PLCAS-313

+ Denotes location of well on United States Topographic Maps, scale 1 to 62,500, latitude and longitude lines being represented by border lines as shown.
 - Denotes one inch spaces on border line of original tracing.

WEST VIRGINIA DEPARTMENT OF MINES
OIL & GAS DIVISION
W E L L R E C O R D

Permit No.	Pleas 313			
St. Marys Quad.				
Company	Lowther & Nohe			Oil Well
Address	956 Lakeview Drive, Parkersburg, W.Va.			CASING & TUBING
Farm	C.W. Echart, Acres 1			
Location	Ohio River			
Well No.	1	Elev. 625'	8 $\frac{1}{2}$	80 80
District	Grant	Pleasant County	6 5/8	170 170
Surface	C.W. Echart, Belmont, W.Va.			
Mineral	Same			No Packer
Commenced	Feb. 19, 1950			Casing not cemented
Completed	March 4, 1950			
Not shot				No coal
No rock Pressure				
Oil	2 bbls. 1st 24 hrs.			
Fresh Water	98'			
Salt Water	210'			

Soil	S	0	3
Sand Gravel	S	3	80
Clay Red	S	80	124
Slate Gr	S	124	134
Slate Blk	S	134	153
Slate Gr	M	153	184
Grit Gr	H	184	190
Sand Wh <i>g. c. H.</i>	M	190	230
Bottom			230
Oil and water		210	