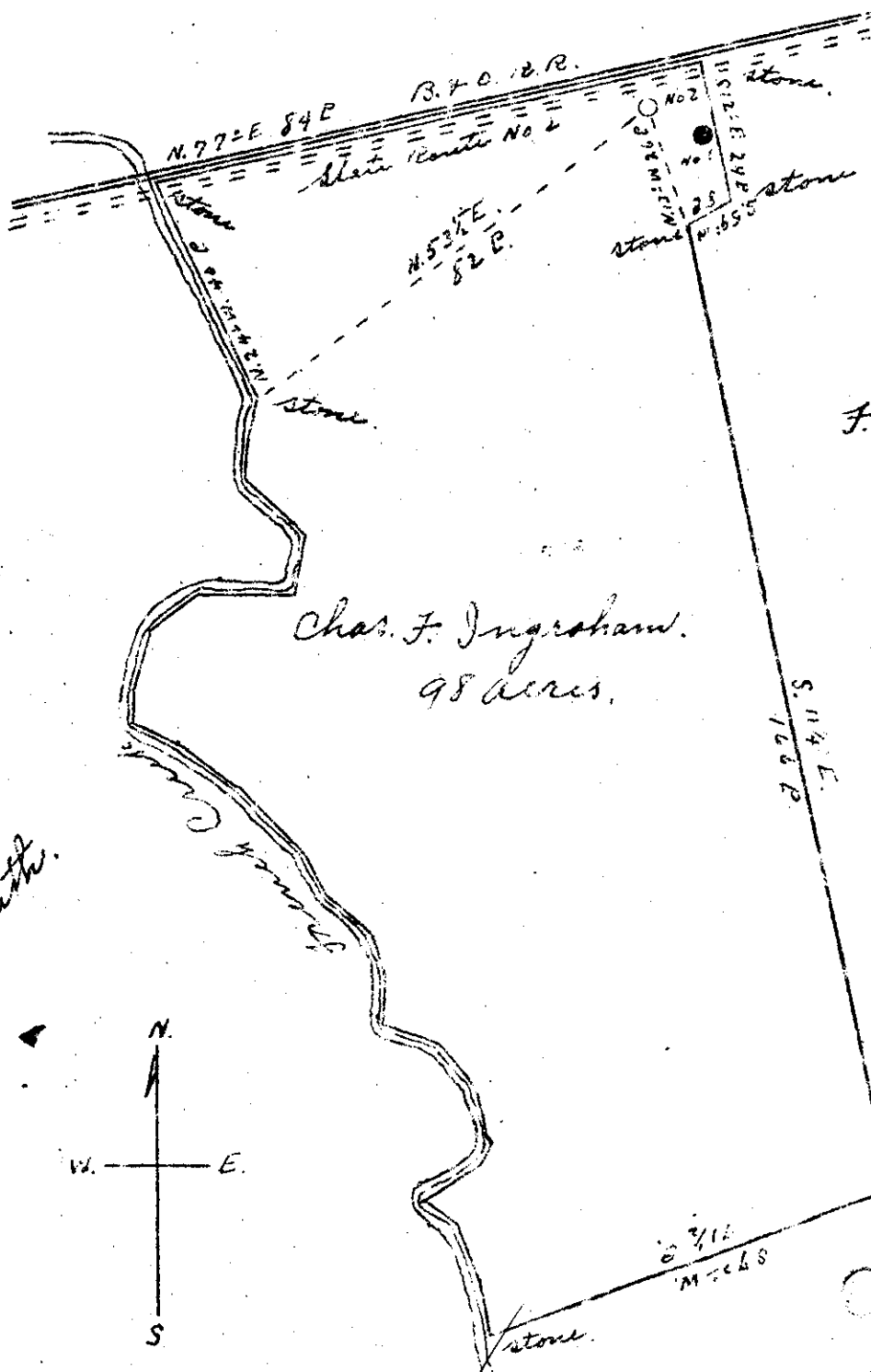


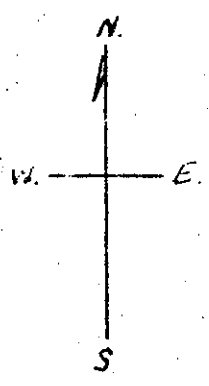
Suckman



F. Bills.

Chas. F. Ingraham.
98 acres.

J. Smith.



New Location X
Drill Deeper
Abandonment

APR 12 1949

H. A. Carpenter

0.07 W

Company C. E. Smith
 Address Europe, W. Va.
 Farm Chas. F. Ingraham
 Tract _____ Acres 98 Lease No. _____
 Well (Farm) No. 2 Serial No. _____
 Elevation (Spirit Level) 623'
 Quadrangle Marietta
 County Pleasants District Great
 Engineer Robert R. Anderson
 Engineer's Registration No. 296
 File No. _____ Drawing No. _____
 Date Mar. 23, 1949 Scale 1" = 30 E.

STATE OF WEST VIRGINIA
DEPARTMENT OF MINES
OIL AND GAS DIVISION
CHARLESTON

WELL LOCATION MAP
FILE NO. PLEAS-294

+ Denotes location of well on United States Topographic Maps, scale 1 to 62,500, latitude and longitude lines being represented by border lines as shown.

- Denotes one inch spaces on border line of original tracing.

60 76

(Dep. M.)