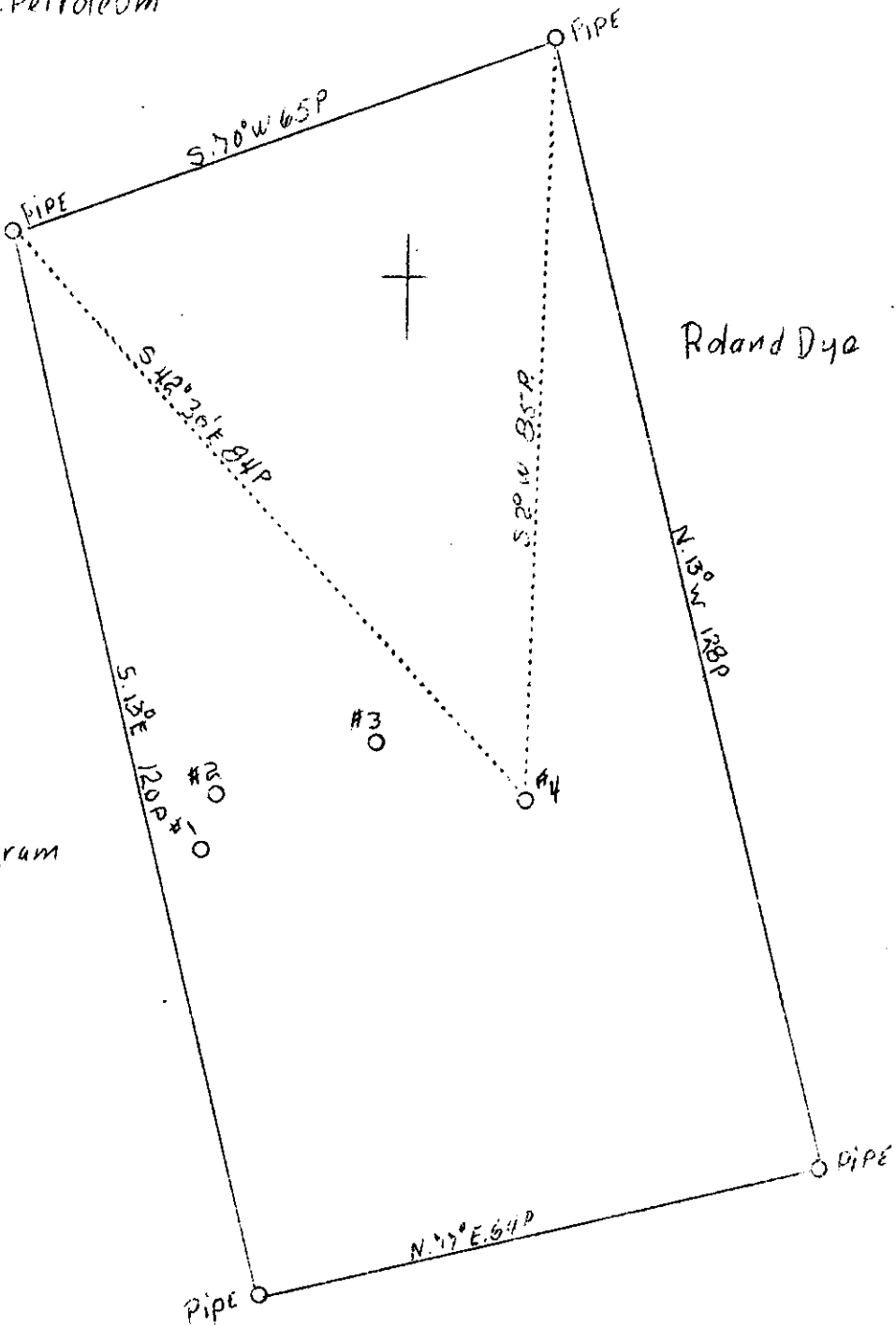


1 2 3

LATITUDE 39° 25'

N.Y. Petroleum

1
2
3



Roland Dye

Kitty Ingram

John Schauback

New Location

ABD
11/39

25 S
41 W

LONGITUDE 81° 10'

Company R. L. Deem and Adam Ward
 Address R.F.D. 3 Parkersburg, W.Va.
 Farm Cussie Dye
 Tract Acres 40 Lease No.
 Well (Farm) No. 4 Serial No.
 Elevation (Spirt Level) 962
 Quadrangle St. Marys W.C.
 County Pleasants District Washington
 Engineer J. E. Anderson
 Engineer's Registration No. Surveyor
 File No. Drawing No.
 Date 6-9-38 Scale 1" = 20 Rds.

STATE OF WEST VIRGINIA
 DEPARTMENT OF MINES
 OIL AND GAS DIVISION
 CHARLESTON

WELL LOCATION MAP

File No. Pleas-126

x Denotes location of well on United States Topographic Maps, scale 1 to 62,500, latitude and longitude lines being represented by border lines as shown.

- Denotes one inch spaces on border line of original tracing.

STATE OF WEST VIRGINIA
DEPARTMENT OF MINES
OIL AND GAS DIVISION

WELL RECORD

Permit No. *Pleas-126*

Oil or Gas Well *Dry*
(Kind)

Company *R. L. Deem & Adam Ward*
 Address *Parkersburg, W. Va.*
 Farm *Cassie Dye* Acres
 Location (waters)
 Well No. *4* Elev. *962'*
 District *Washington* County *Pleasants*
 The surface of tract is owned in fee by *Cassie Dye*
 Address *St. Marys, W. Va.*
 Mineral rights are owned by
 Address
 Drilling commenced
 Drilling completed *November 1939*
 Date shot Depth of shot *760*
 Open Flow /10ths Water in Inch
 /10ths Merc. in Inch
 Volume Cu. Ft.
 Rock Pressure lbs. hrs.
 Oil bbls., 1st 24 hrs.
 Fresh water feet feet
 Salt water feet feet

Casing and Tubing	Used in Drilling	Left in Well	Packers
Size			Kind of Packer
16			
18			
10	<i>16'</i>		Size of
8 1/4	<i>240'</i>		
6 1/2	<i>425'</i>		Depth set
5 3/16			
3			Perf. top
2			Perf. bottom
Liners Used			Perf. top
			Perf. bottom

CASING CEMENTED SIZE No. Ft. Date
 COAL WAS ENCOUNTERED AT FEET INCHES
 FEET INCHES FEET INCHES
 FEET INCHES FEET INCHES

Formation	Color	Hard or Soft	Top	Bottom	Oil, Gas or Water	Depth Found	Remarks
Red Rock			0	125			
Slate			125	275			
Red Rock			275	325			
Slate			325	385			
Red Rock			385	425			
Slate			425	535			
Cow Run Sand			535	550			
Slate			550	625			
Sand			625	665			
Slate			665	825			
S. Shell & Slate			825	870			
Slate			870	925			
Salt Sand			925	1030			
Slate			1030	1055			
Maxon Sand			1055	1143			
Keener Sand			1143	1168			
Slate			1168	1260			
Injun Sand			1260	1400			
Slate			1400	1821			
Total Depth				1821			

Show of oil