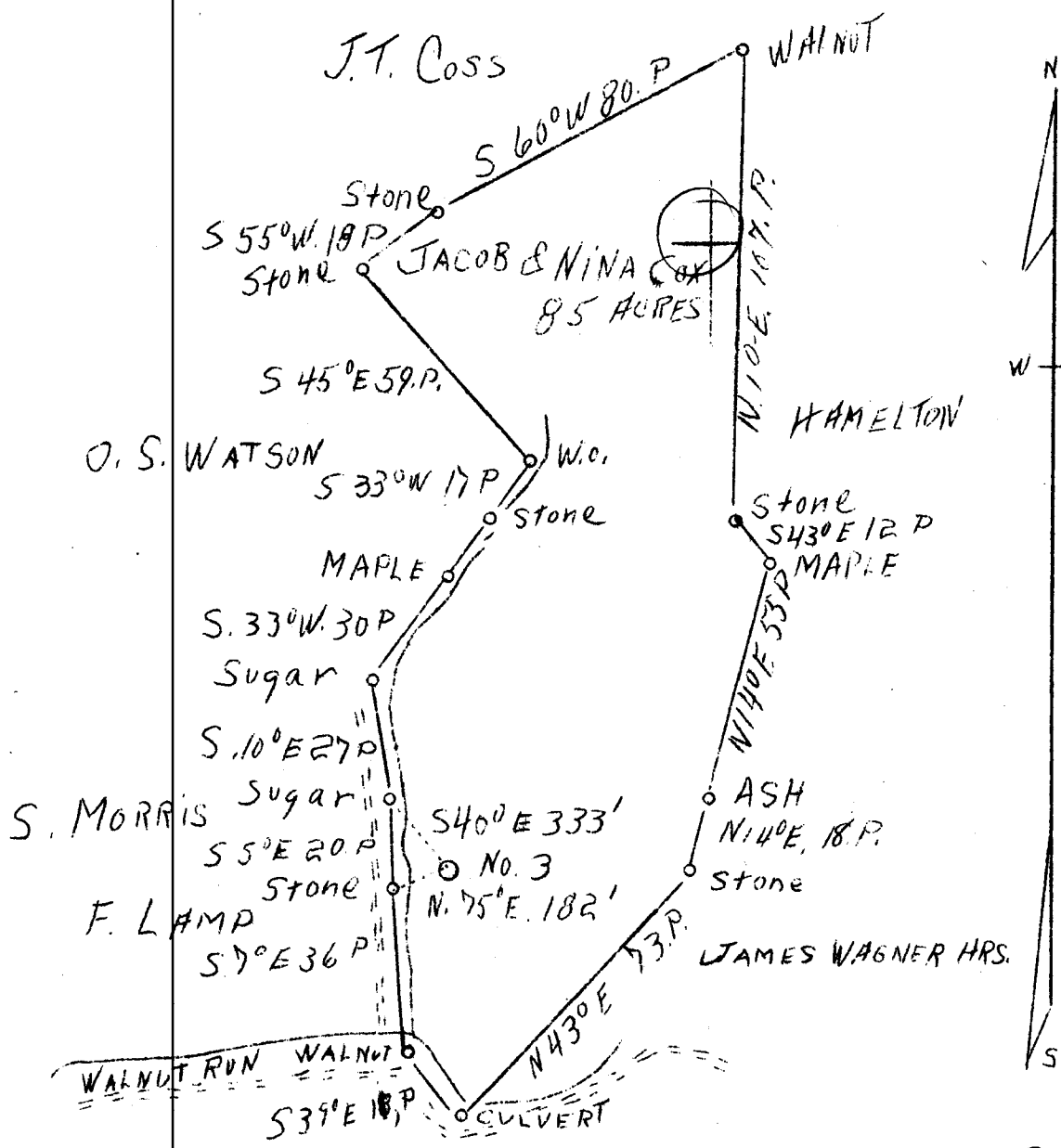


LATITUDE 39° 25'

LONGITUDE 81° 00'



ABD
8/39

2.68 W
3.14 S

Company	Cox Farm Oil Co.
Address	Maxwell, W.Va.
Farm	Jacob and Nina Cox
Tract	Acres 85 Lease No.
Well (Farm) No.	3 Serial No.
Elevation (Spirit Level)	804
Quadrangle	St. Marys E.C.
County	Pleasants District Lafayette
Engineer	J.V. Dunbar
Engineer's Registration No.	65
File No.	C-23-L Drawing No.
Date	Mar. 22, 1938 Scale 1"=40 f. as

STATE OF WEST VIRGINIA
Department of Mines
OIL AND GAS DIVISION
CHARLESTON

WELL LOCATION MAP
File No. Pleas-116

Denotes location of well on United States Topographic Maps, scale 1 to 62,500, latitude and longitude lines being represented by border lines as shown.

Denotes one inch spaces on border line of original tracing.

*Send Gov
Phone 397
not
st. map.*

WEST VIRGINIA DEPARTMENT OF MINES
OIL AND GAS DIVISION

WELL RECORD

Permit No. *116*

Oil or Gas Well (Kind) *Gas*

Company *Cot Farm Oil Company*
 Address *Marshall*
 Farm *Jacob Cot* Acres *80*
 Location (waters) *Walnut Run*
 Well No. *3* Elev. *9011'*
 District *Lansette* County *Pleasants*
 The surface of tract is owned in fee by *Jacob Wing Cot*
 Address *Reliance Ritchie Co*
 Mineral rights are owned by *Jacob Wing Cot*
 Address *Reliance Ritchie Co*
 Drilling commenced _____
 Drilling completed *July 14, 1939*
 Date shot _____ Depth of shot *1682-1690*
 Open Flow /10ths Water in _____ Inch
 /10ths Merc. in _____ Inch
 Volume *30,000* Cu. Ft.
 Rock Pressure _____ lbs. _____ hrs.
 Oil _____ bbls., 1st 24 hrs.
 Fresh water _____ feet _____ feet
 Salt water _____ feet _____ feet

Casing and Tubing	Used in Drilling	Left in Well	Packers
Size			
16			Kind of Packer
13			
10	<i>16 ft</i>		Size of
8 1/4	<i>3.02 ft</i>		
6 5/8	<i>9.62 ft</i>		Depth set
5 3/16			
3			Perf. top
2			Perf. bottom
Liners Used			Perf. top
			Perf. bottom

CASING CEMENTED _____ SIZE _____ No. FT. _____ Date _____
 COAL WAS ENCOUNTERED AT _____ FEET _____ INCHES
 _____ FEET _____ INCHES FEET _____ INCHES
 _____ FEET _____ INCHES FEET _____ INCHES

Formation	Color	Hard or Soft	Top	Bottom	Oil Gas or Water	Depth Found	Remarks
Black slate	Black	soft	16	60			
Sand	White	soft	60	80			
Slate	Red	soft	80	200			
Sand	White	soft	200	220			
Black Rock	red	soft	220	326	<i>302' - 8 1/4'</i>		
Sand	White	soft	326	360			
Rock	White	soft	380	380			
Rock	red	soft	380	395			
Rock	White	soft	395	430			
Sand	White	hard	430	440			
Slate	White	soft	440	500			
lime	White	shell	500	535			
sand	White	soft	535	546			
Rock	red	soft	546	585			
sand	White	Hard	585	600			
Red	Rock	soft	610	700			
lime	White	Hard	700	710			
slate	White	soft	710	755			
lime	White	Hard	755	760			
Rock	pink	soft	760	775			
Black	slate	soft	775	790			
Little	sand		790	795			
White	slate		795	815			

Formation	Color	Hard or Soft	Top	Bottom	Oil, Gas or Water	Depth Found	Remarks
sand	white	soft	815	847			
slate	"	"	847	860			
lime	white	Hard	860	865			
slate	white	soft	865	875			
slate	Black	soft	875	935			
Pink	Rock	soft	935	945			
slate	white	Hard	945	965			
sand 2nd	Core	Run	965	1020			
slate	Black	soft	1020	1090			
sand	first	salt	1090	1110			
Black	slate		1010	1130			
white	sand	salt	1130	1160			
Black	slate	soft	1160	1320			- salt water 6 3/4 bailes per week.
white	sand	soft	1320	1350			
Black	slate	soft	1350	1352			
white	sand	soft	1352	1380			
Black	slate	soft	1380	1510			
white	sand	soft	1510	1570			
Black	slate	soft	1570	1681			gas 15 3/4' top
Marin	white	soft	1681	1688			which 1540
lime	white	soft	1688	1692			
sand	white	hard	1692	1704			Bottom 1562.
slate	Black	soft	1704	1709			
sand	white	hard	1709	1709			
sand	grey	hard	1709	1717			
sand slate	Gibbels	soft	1717	1747			
Pop engine	white	soft	1747	1749			
brook	black	soft	1749	1879			
sand	white	hard	1879	1879			Total Depth 1879.

Date....., 19.....

APPROVED....., Owner

By.....

(Title)