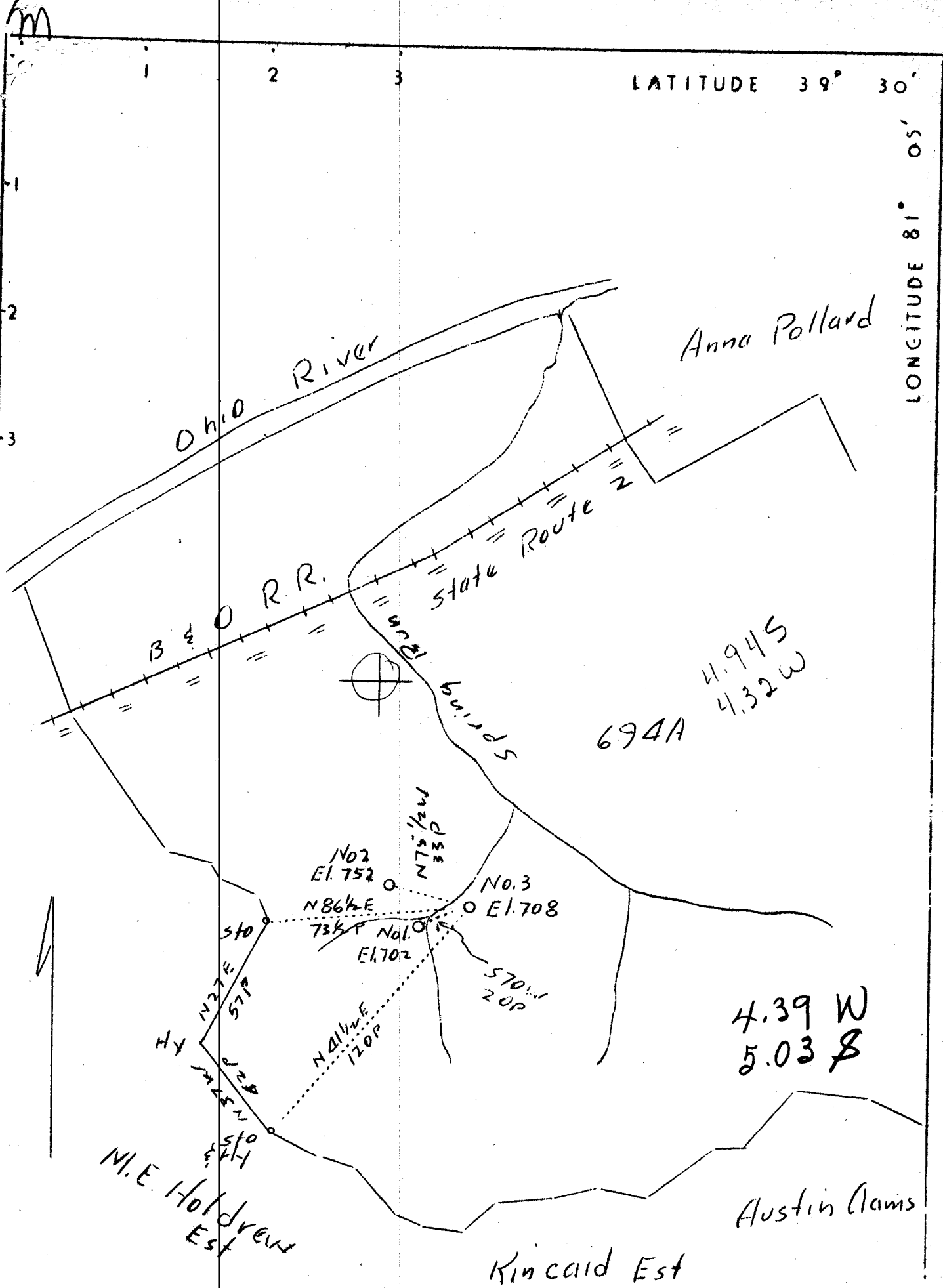


LATITUDE 39° 30'

LONGITUDE 81° 05'



Company	L.C. White and others
Address	Raven Rock, W.Va.
Farm	State Farm
Tract	Acres 694
Well (Farm) No.	3
Elevation (Spirit Level)	708, 752, 702
Quadrangle	St. Marys
County	Pleasants
District	Union
Engineer	Jno. Triplett
Engineer's Registration No.	
File No.	
Date	Feb. 21, 1938

STATE OF WEST VIRGINIA
 Department of Mines
 OIL AND GAS DIVISION
 CHARLESTON

WELL LOCATION MAP

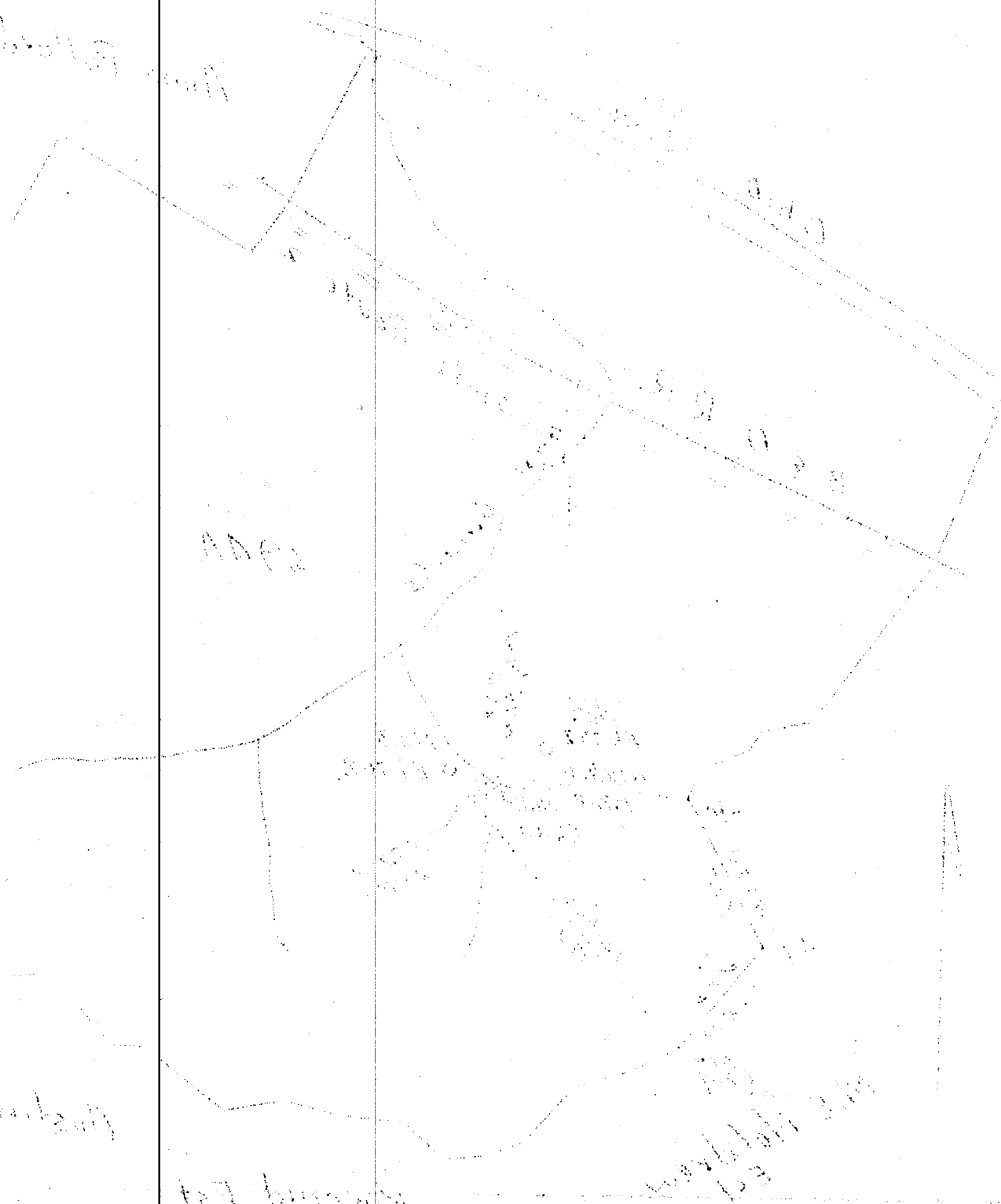
File No. PLEAS-111-112 & 113

+ Denotes location of well on United States Topographic Maps, scale 1 to 62,500, latitude and longitude lines being represented by border lines as shown.

— Denotes one inch spaces on border line of original tracing.

5-6-38

QUINN



RECEIVED
MAR 8 1 1938
 WEST VIRGINIA
 GEOLOGICAL SURVEY

WEST VIRGINIA DEPARTMENT OF MINES

OIL & GAS DIVISION

WELL RECORD

Permit No. Pleas-111

Gas well

St. Marys Quad.

CASING & TUBING

Company	L. C. White & Co.,	8-1/4	370	370
Address	Ravon Rock, W. Va.	2	510	510
Farm	State ACRES 700			
Location	Spring Run			Packer - Anchor
Well No.	One ELEV. 702			Size - 8-1/4 x 2"
District	Union - Pleasants County			Depth set -
Surface & Mineral	State of West Virginia			Perf. top - 495
Address	Charleston, W. Va.			" bot. 505
Drilling commenced	Sept. 1936			
Drilling completed	Oct. 1936			
Shot	Not shot			
Volume	Estimated 40,000 c.f.			
Rock Pressure	110 lbs. 6 hrs.			
Oil	Dry			
Fresh Water	60 and 80			
Salt Water	None			

Formation Color ^{Har} Top Base Result Formation Color ^{Har} Top Base Result

Formation	Color	Har	Top	Base	Result	Formation	Color	Har	Top	Base	Result
Red sand	red	s	60	75							
Mostly red rock	grey	to	400'	solid	Fresh water to 80'						
Black Slate			400	460							
Lime formation			460	490							
✓ Gow Run Sand	15		490	510	(495 510)	Gas	495	to	505		