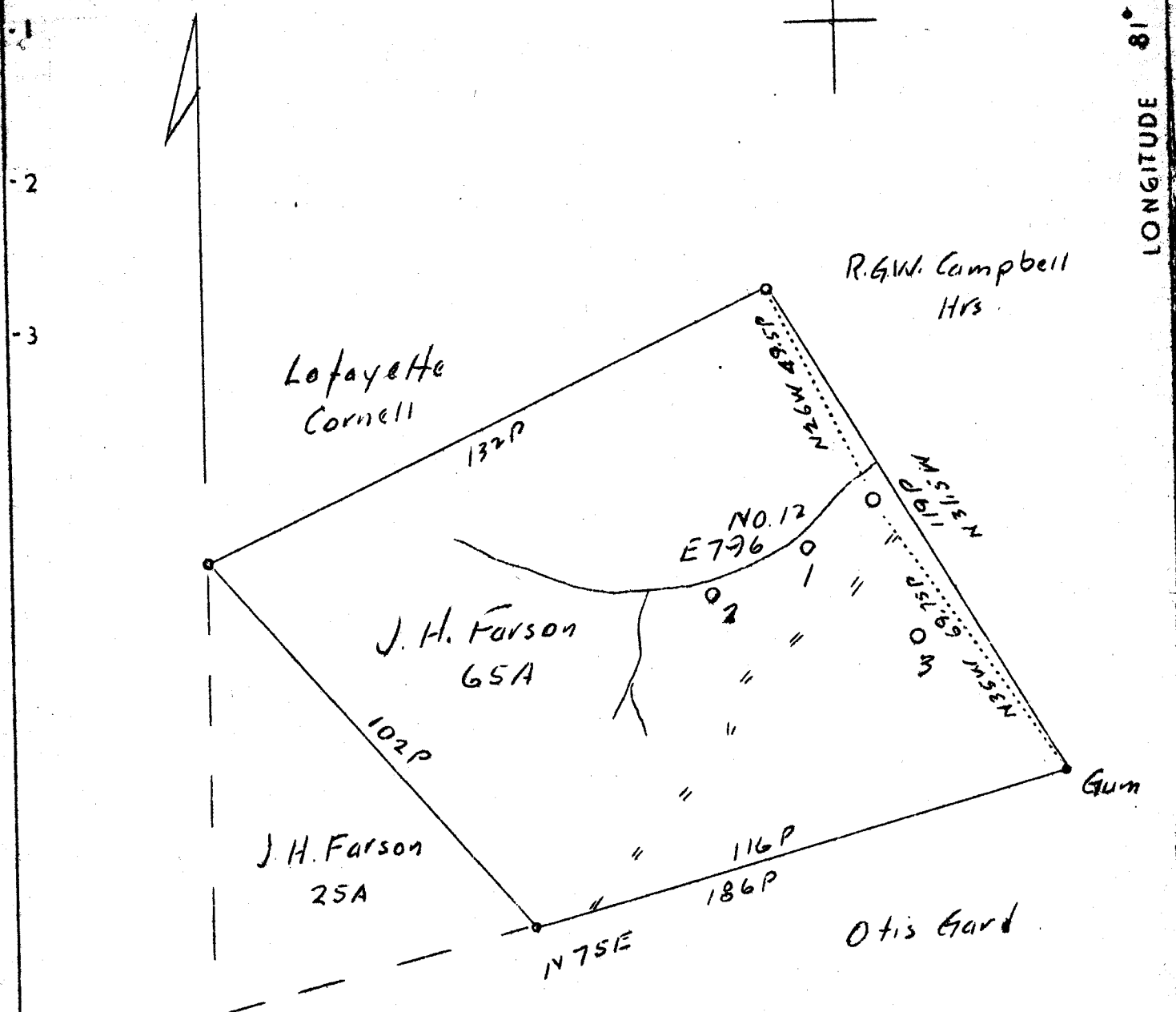


509

LATITUDE 39° 20'

LONGITUDE 81° 15'



2.1876.
1.238.

Company	Tri State Oil & Gas Co.
Address	Parkersburg, West Va.
Farm	J.H. Farson
Tract	Acres 65 Lease No.
Well (Farm) No.	12 Serial No.
Elevation (Spirit Level)	796
Quadrangle	Marietta (S.E.)
County	Pleasants District Jefferson
Engineer	J.V. Dunbar
Engineer's Registration No.	65
File No.	C-23-L Drawing No.
Date	8/31/37 Scale 1"-32 rods.

STATE OF WEST VIRGINIA
Department of Mines
OIL AND GAS DIVISION
CHARLESTON

WELL LOCATION MAP

File No. PLEAS-103

+ Denotes location of well on United States Topographic Maps, scale 1 to 62,500, latitude and longitude lines being represented by border lines as shown.

— Denotes one inch spaces on border line of original tracing.

J.H. Farson No. 12

3-3
64 75

RECEIVED
OCT 11 1937
KENTON
25010

**WEST VIRGINIA DEPARTMENT OF MINES
OIL AND GAS DIVISION**

W E L L R E C O R D

Permit No. Pleas. 103

Gas Well

Marietta Quad.

CASING & TUBING

Company	Tri State Oil & Gas Co.	8 1/4 (for Comd.)	20
Address	Parkersburg, W.Va.	6 1/2	139
Farm	Jas. H. Farson Acres 65	2 (Tub.)	970
Location	Campbells Run of Horseneck Creek	PACKER	
Well No.	12 Elev. 796 S.L.		
District	Jefferson County Pleasants	Kind	Not given
Surface	Jas. H. Farson, St. Marys, Route 4, W.Va.	Size	6 1/2 x 2"
Mineral	Same	Depth	900'
Drilling	Commenced Not given		
	Completed Not given		
Date Shot	954-960' (80 sticks, 60% dynamite. Shot did not increase gas flow.)		
Volume	Taking gas from casing head and through tubing.		

Formation	Color	H ^{or}	Top	Base	Result	Formation	Color	H ^{or}	Top	Base	Result
Surface			0	10							
Rock	Grey		10	20							
Sandstone			45	60	Water						
Herbst (?)	Brown	S	103	133	H.F.W.						
Shale	Gr. Black	H	133	139	Sh. Oil						
Shale	Black	S	139	190	103-133'						
Horseneck (Salt Sand)	Grey	S	190	214	Sh. Oil						
	Brown & white		210								
Slate & Sand	(Mixed)		214	218							
Slate	Grey		218	220	SLM						
Slate	Black	S	220	297	220'4"						
Limey Shale	Blk. Gr.	H	297	335							
L. Lime	Grey	H	335	351	Gas						
Slate (Mixed with Coal) Shale	Blk.		351	359	338 - Good gas show - would light Coal Blossom only - not commercial.						
Maxon	Grey	H	360	361	Gas - 10,000 Cu. Ft. (in limey sand)						
B. Lime	Grey	V.H.	361	367	Greenbrier Limestone.)						
Lime & Sand	Grey	V.H.	367	387							
B. Injun Sand	Grey										
turning white	H.		387	393	Water						
Watery Sand	White	V.V.H.			383 - A little Salt Water, enough to drill with but exhausted.						
	fine, no more										
	Water.		393	410							
Big Injun	White	H	410	417	Smell of Oil						
Big Injun	Dark	Softer	417	434	Smelled Oily						
Big Injun	Whiter	H	434	438	SLM 434						
Sand			438	461							
Sand	White	H	461	485	Sh. gas						
Big Injun	White	H	485	490							
Big Injun	Darker	F.H.	490	508							
Big Injun	Whiter	H	508	513							
Big Injun	Dr. Brown	H	513	526							
Slate	Black		526	532							
Big Injun	Dr. Gr.	H & F	532	550	(turning white)						
Squaw		H	550	580							
Slate	Black	S	580	590							
Slate, Shale & Limey Shells			590	900							
Slate	Grey	H	900	910	Hole caved badly at						
Shale (Black	Coffee	Shale)	910	940	825' - cemented cave						
Shale	Black	S	940	955							
Shale & Lime	Grey		955	957	Gas						
Shale (Coarse	Black	S	957	971	60,000						
TOTAL DEPTH			(SLM)	971	Cu. Ft.						

NOTE: NO BEREA SAND - Shale and slate taking place of Berea - Drilled 14 feet below place where Berea should have been found.

RECEIVED
DEC 21 1937
NEW YORK
GEOLOGICAL SURVEY