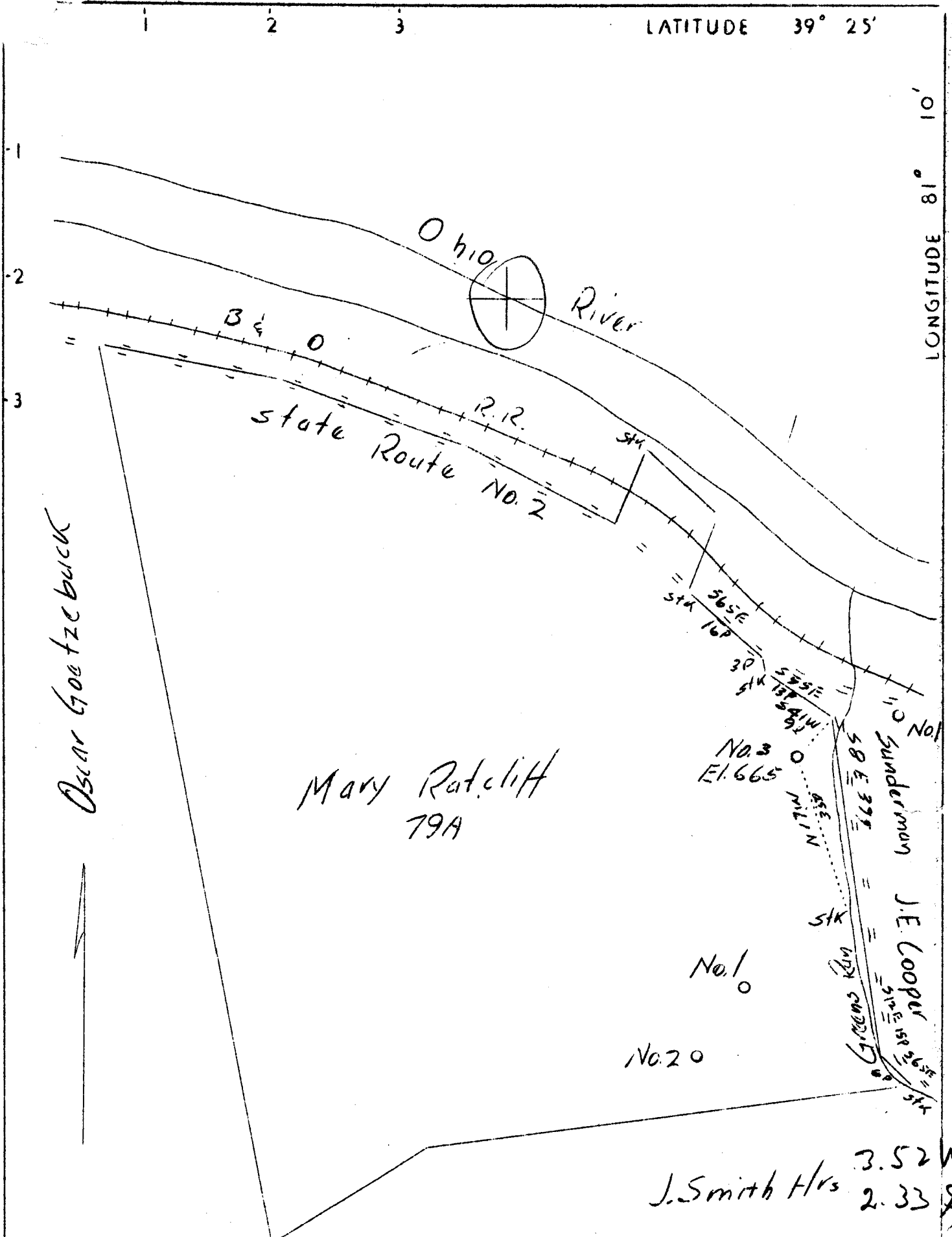


LATITUDE 39° 25'

LONGITUDE 81° 10'



Company Simon Axelrod
 Address 600 First National Bank Bldg. Bellaire, O.
 Farm Mary Ratcliff
 Tract Acres 79 Lease No. _____
 Well (Farm) No. 3 Serial No. _____
 Elevation (Spirit Level) 665'
 Quadrangle St. Marys W. G.
 County Pleasants District Washington
 Engineer Jno. Triplett
 Engineer's Registration No. _____
 File No. _____ Drawing No. _____
 Date Aug. 24, 1937 Scale 1"-20 P.

STATE OF WEST VIRGINIA
 Department of Mines
 OIL AND GAS DIVISION
 CHARLESTON

WELL LOCATION MAP
 File No. PLEAS-101

+ Denotes location of well on United States Topographic Maps, scale 1 to 62,500, latitude and longitude lines being represented by border lines as shown.

— Denotes one inch spaces on border line of original tracing.

REV. VE SCOTTIA

UNIT 106

1944

1944

1944

1944

1944

1944

RECEIVED
SEP 21 1937
MISSISSIPPI
GEOLOGICAL SURVEY

WEST VIRGINIA DEPARTMENT OF MINES

OIL AND GAS DIVISION

WELL RECORD

Permit No. Pleas-101

Oil Well

St. Marys Quad.

CASING & TUBING

Company Simon Axelrod
 Address Bellaire, Ohio
 Farm Ratcliff Acres 79
 Location Green's Run
 Well No. 3 Elev. 665'
 District Washington County Pleasants
 Surface Cameron C. Ratcliff, St. Marys, W. Va.
 Mineral Cameron C. Ratcliff and J. R. Seckman
 Address St. Marys, W. Va.
 Drilling Commenced Sept. 23, 1937
 Completed Oct. 6, 1937

Volume
 Rock Press. 3 # hrs. not given
 Oil 20 bbls., 1st 24 hrs.

10 20' 8"
 8 1/2 420'
 6 5/8 811'
 2 827'

PACKER

Kind Bottom Hole Disc
 Size 6 5/8 x 8" hole
 Depth 815'

FORMATION COLOR ^{HT} TOP BASE RESULT FORMATION COLOR ^{HT} TOP BASE RESULT

FORMATION	COLOR	HT	TOP	BASE	RESULT	FORMATION	COLOR	HT	TOP	BASE	RESULT
Shaley Rock		M		20							
Rock	Red	M	20	65							
Slate	White	M	65	70	Water						
Shale	White	M	70	130	70'						
Red Rock		M	130	135							
Slate	White	M	135	145							
Sand	White	M	145	150							
Slate	White	M	150	210							
Red Rock		M	210	250							
Slate	White	M	250	275							
Red Rock	White	M	275	280							
Sandy Lime	White	H	280	285							
Slate	White	M	285	315	Smell						
Shale	Black	M	315	320	of oil						
Slate	White	M	320	330	330'						
Lime	Black	H	330	395							
Shale	Black	M	395	400							
Lime	White	M	400	410							
Lime	Dark	M	410	420							
Lime Slate	Grey	M	420	430	Smell						
Lime	White	M	430	455	of Oil						
Sand	Light	H	455	470	& Gas						
Lime	White	M	470	490							
Shale	Black	M	490	502	Sm. of						
Slate	Black	M	502	525	Gas						
Sand	White	M	525	550							
Slate	White	M	550	620	Little						
Sand	Light	M	620	650	Water						
Shale	Light	M	650	655	565'						
Shale	Black	M	655	660							
Slate	White	M	660	690							
Sand	Light	M	690	715							
Slate	White	M	715	725							
Shale	White	M	725	755							
Shale	Black	M	755	785							
Sand	White	H	785	795							
Slate	White	M	795	817							
Sand	Dark	M	817	827	Gas & Oil 817' - 827'						

RECEIVED

MAY 9 1938

**WEST VIRGINIA
GEOLOGICAL SURVEY**