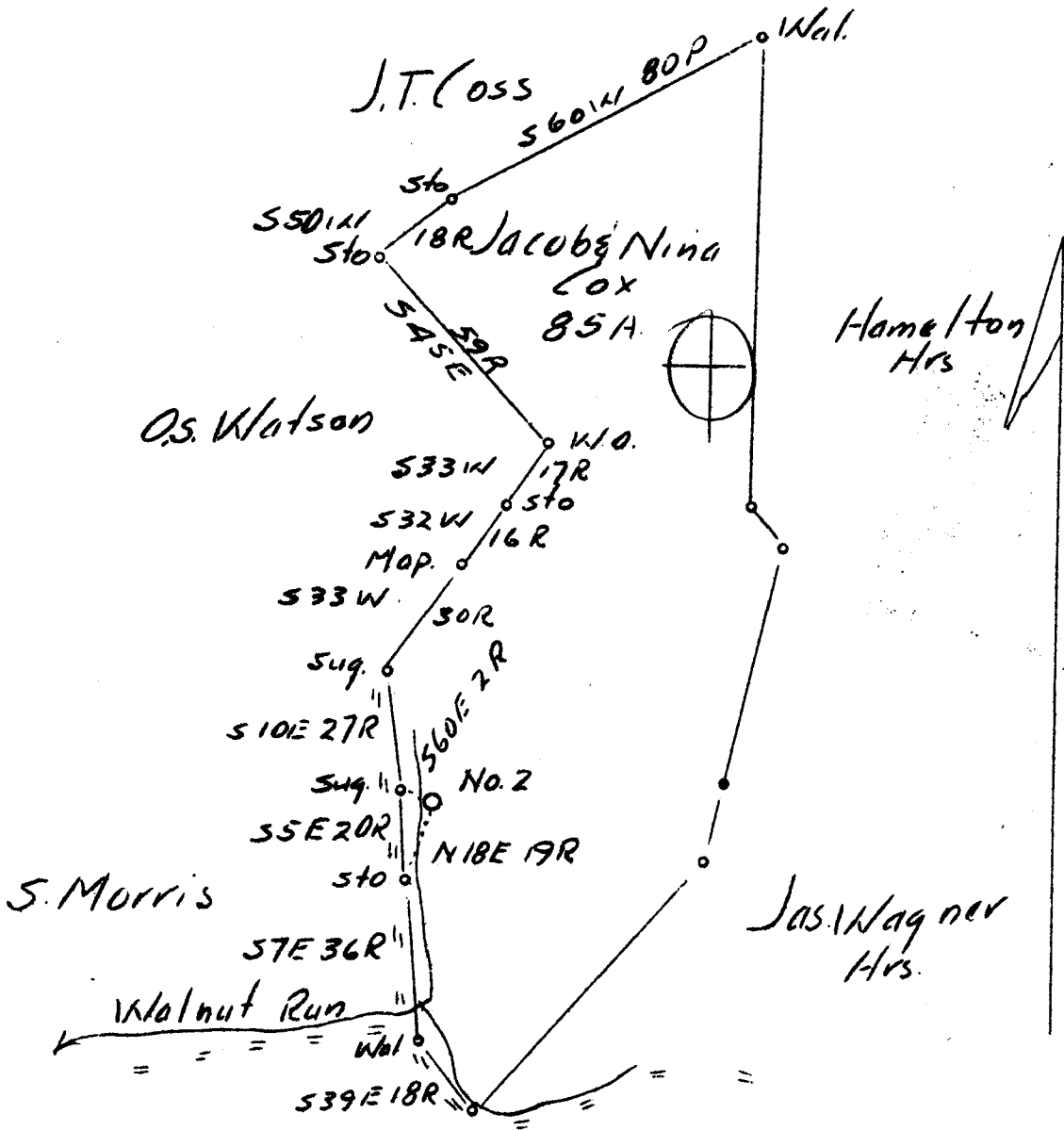



LATITUDE 39° 25'

LONGITUDE 81° 00'



2.84 W  
3.85 W

Company	Sud Powell
Address	Maxwell, W.Va.
Farm	Jacob Cox & Nina Cox
Tract 1	Acres 85 Lease No.
Well (Farm) No.	Serial No.
Elevation (Spirit Level)	771 
Quadrangle	St. Marys
County	Pleasants District Lafayette
Engineer	J.V. Dunbar
Engineer's Registration No.	65
File No.	C-23-L Drawing No.
Date	July 30, 1937 Scale 1"-40 Rods

STATE OF WEST VIRGINIA  
Department of Mines  
OIL AND GAS DIVISION  
CHARIE STON

WELL LOCATION MAP  
File No. PLEAS-94

Denotes location of well on United States Topographic Maps, scale 1 to 62,500, latitude and longitude lines being represented by border lines as shown.

Denotes one inch spaces on border line of original tracing.



WEST VIRGINIA DEPARTMENT OF MINES

OIL AND GAS DIVISION

WELL RECORD

Permit No. Pleas- 94

Oil Well

St. Marys Quad.

CASING & TUBING

Company Cox Farm Oil Co.  
 Address St. Marys, W. Va.  
 Farm J. C. Cox Acres 80  
 Location Walnut Run  
 Well No. 2 Elev. 771  
 District LaFayette County Pleasants  
 Surface J. C. Cox, Ruthford  
 Mineral J. C. Cox & J. I. Cass, St. Marys, W. Va.  
 Drilling Commenced March 3, 1937  
 Completed Jan. 5, 1938  
 Date Shot Feb. 17, 1938 Depth 1650-1660  
 Oil 5 bbls. 1st 24 hrs.

8 1/2	230	230
6 5/8	930	930
4 7/8 (Liner)		430
2		1675

PACKERS

Kind	
Size	
Depth	930

FORMATION	COLOR	H OR S	TOP	BOTTOM	RESULT	FORMATION	COLOR	H OR S	TOP	BASE	RESULT
-----------	-------	--------	-----	--------	--------	-----------	-------	--------	-----	------	--------

Clay	Red	S	0	40							
Slate	White		40	100							
Shale	Red		100	180							
Slate	White		180	215							
Sand		H	215	225							
Slate		S	225	280							
Shale	Red		280	420							
Sand	White	H	420	445							
White	Slate	S	445	515							
Lime	Brown	H	515	525							
Shale	Red	S	525	565							
Slate	White		565	580							
Shale	Red	S	580	675							
Slate	White		675	710							
Shale	Pink	S	710	740							
Lime	Brown		740	780							
1st Cow Run Sand	White		780	785							
Sandy Slate			785	915							
Pink Rock		S	915	925							
Slate	White	H	925	970							
2nd Cow Run S.			970	980							
Slate	White	S	980	1035							
1st Salt	Sand	H	1035	1060							
Slate	Black	S	1060	1095							
2nd Salt	Sand		1095	1130							
Slate	Black	S	1130	1270							
Limey	Brown	H	1270	1332							
3rd Salt	Sand		1332	1345	Little						
Slate	White	S	1345	1400	Gas						
Sand		H	1400	1410	1338-						
Slate	Black	S	1410	1505	1340						
Sand-Maxon		H	1505	1525							
Slate	Black	S	1525	1575	Oil						
Big Lime	White	H	1575	1550	1650-						
Keener Sand			1550	1660	1660						
Slate			1660	1660							

**RECEIVED**  
**APR 25 1938**  
**WEST VIRGINIA**  
**GEOLOGICAL SURVEY**