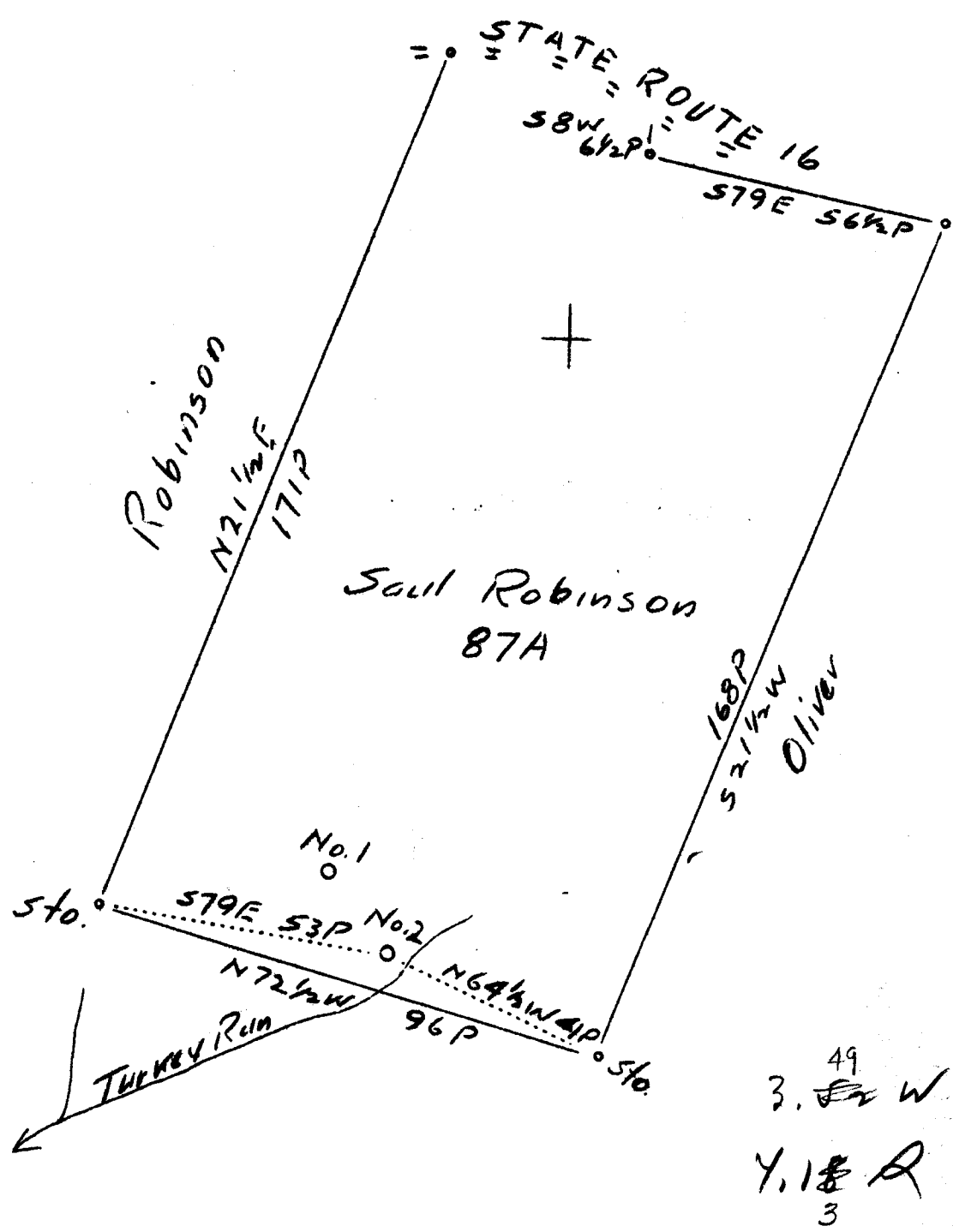


0 1 2 3 LATITUDE 39° 25'

LONGITUDE 81° 05'



Company	Ward & Deems Oil & Gas Co
Address	Parkersburg, W. Va. R.D. #3
Farm	Saul Robinson
Tract	Acres 87 Lease No.
Well (Farm) No.	2 Serial No.
Elevation (Spirit Level)	950'
Quadrangle	St. Marys <span style="border: 1px solid black; border-radius: 50%; padding: 2px;">C</span>
County	Pleasants District McKin
Engineer	J. E. Anderson
Engineer's Registration No.	Surveyor
Date	5-19-37 Scale 1" - 30 P/
File No.	Drawing No.

STATE OF WEST VIRGINIA  
 Department of Mines  
 OIL AND GAS DIVISION  
 Charleston

WELL LOCATION MAP

File No. PLEAS-88

+ Denotes location of well on U. S. Topographic Maps, scale 1 to 62,500 latitude and longitude lines being represented by border lines as shown.

— Denotes one inch spaces on border line of original tracing.

Oleas-88-5

Surface

Sand R. 100 ft -

Clay 91 - 191 1/2

Slate 191 - 291 -

Lime S. 291 - 321

Red rock 321 - 375 -

Slate 375 - 555 -

Red Rock 555 - 655 -

Slate 655 - 755 -

Red rock 755 - 780

Slate 780 - 850

Red rock 850 - 860

Slate 860 - 980

Pink rock 980 - 990

Slate 990 - 1087

1087 casing

Slate 1087 - 1250

1st  
Salt sand 1250 - 1350

over

Slate 1326-1430

Salted 1430-1475

Slate 1475-1530

up 1530-1555

Spindle June 1555-1697

Keener 1697-1702

Sand 1702-1723

WEST VIRGINIA



**RECEIVED**  
 JUN 1 1937  
 WEST VIRGINIA  
 GEOLOGICAL SURVEY

UNIVERSITY OF WEST VIRGINIA