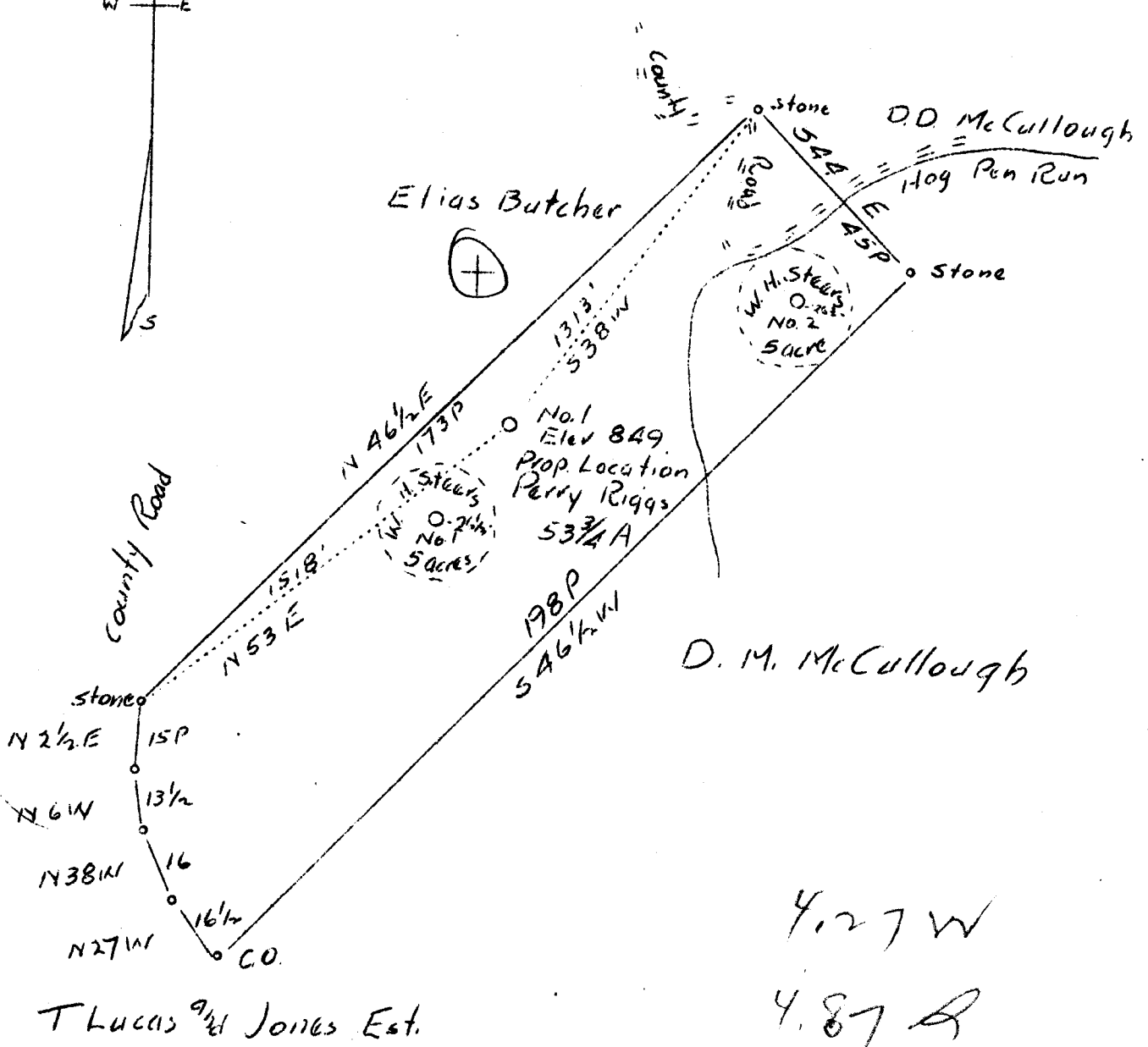


LATITUDE 39° 25'

LONGITUDE 81° 00'



Company	Perry Riggs
Address	Hebron, W. Va. R1
Farm	United Bank of Middlebourne, W. Va.
Tract	Acres 53 3/4 Lease No.
Well (Farm) No. 1	Serial No.
Elevation (Spirit Level)	849
Quadrangle	St. Marys E. (EC)
County	Pleasants District McKim
Engineer	J. V. Dunbar
Engineer's Registration No.	65
File No. C-23-L	Drawing No.
Date	2-5-37 Scale 1" = 32 Rods

STATE OF WEST VIRGINIA  
 Department of Mines  
 OIL AND GAS DIVISION  
 Charleston

WELL LOCATION MAP  
 File No. PLEAS-86

+ Denotes location of well on U. S. Topographic Maps, scale 1 to 62 500 latitude and longitude lines being represented by border lines as shown.

- Denotes one inch spaces on border line of original tracing.

WEST VIRGINIA DEPARTMENT OF MINES  
OIL AND GAS DIVISION

WELL RECORD

Permit No. Pleas-86

Oil & Gas Well

Quad. Not Given

CASING & TUBING

Company Perry Riggs  
 Address Hebron  
 Farm United Bank of Middlebourne Acres  
 Location Hog Pen Run  
 Well No. 1 Elev. 849  
 District McKim County Pleasants  
 Surface United Bank of Middlebourne  
 Address Middlebourne, W.Va.  
 Mineral Perry Riggs, Hebron, W.Va.  
 Drilling Commenced May 1, 1937  
 Completed June 1.  
 Date Shot Not given Depth 1786  
 Volume 70,000 Cu.Ft.  
 Rock Press. 650# hrs. not given  
 Oil 1732-1783'- 2 bbls. ,1st 24 hrs.

Conductor 14  
 8 1/4 185  
 6 5/8 987  
 5 3/16 1485 1485

PACKER

Kind Disc  
 Size 6"  
 Depth 1485

Formation Color					Formation Color				
	Hor	TOP	Base	Result		Hor	TOP	Base	Result
			650	Cave					
Little Dunkard			820	Gas					
Big Dunkard			945	1500-					
Sand		1045	1070	1525					
Sand		1110	1165						
1st Salt		1200	1240	Gas					
2nd Salt Sand		1300	1460	1590-					
3rd Salt Sand		1480	1525	1594					
Sand <del>Max</del>		1565	1590						
Bottom Sand			1610						
Lime & Sand <b>BL</b>		1665	1695	---Sandy and broken--- no true lime.					
Keener Sand		1700	1745	Gas					
Injun Sand		1750	1840	1600-					
				1305					
TOTAL DEPTH			1862						
NOTE:	1st shot	20 qts.							
	2nd shot	30 qts.							
	Maxon Sand-Oil	1732							
	Injun Sand-Oil	1783							

**UNITED BANK OF MIDDLEBOURNE ACRES NO. 1 WELL**

McKin District, Pleasants Co., W. Va.

By Perry Riggs, Hebron, W. Va.

On Hog Pen Run

Elevation 849' L.

Surface owned by United Bank of Middlebourne, Middlebourne, W. Va.

Minerals owned by Perry Riggs, Hebron, W. Va.

Drilling commenced May 1, 1937; completed June 1, 1937

Well shot (date not given) to 1786'

Volume 70,000 cu. ft.

Rock pressure 650# - hrs. not given

Oil 1732-83' - 2 bbls. 1st 24 hrs.

8 1/4" casing 185; 6 5/8", 987'; 5 3/16", 1485'.

6" Disc. at 1485'.

1st shot 20 qts.; 2nd shot 30 qts.

Maxen Sand-Oil 1732. Injun Sand-Oil 1483'.

Record from V.C. Smith, Feb. 1, 1938

	Top.	Bottom
Little Dunkard		820 (gas)
Big Dunkard	945	1508
Sand	1045	1525
Sand	1110	1165
1st Salt	1200	1240 (gas)
2nd Salt Sand	1300	1450
3rd Salt Sand	1480	1525
Sand	1565	1590
Bottom Sand		1610
Lime and sand	1665	1695 (sandy and broken-no true lime.)
Keener Sand	1700	1745 (gas)
Injun Sand	1750	1860
<b>TOTAL DEPTH</b>		<b>1862</b>