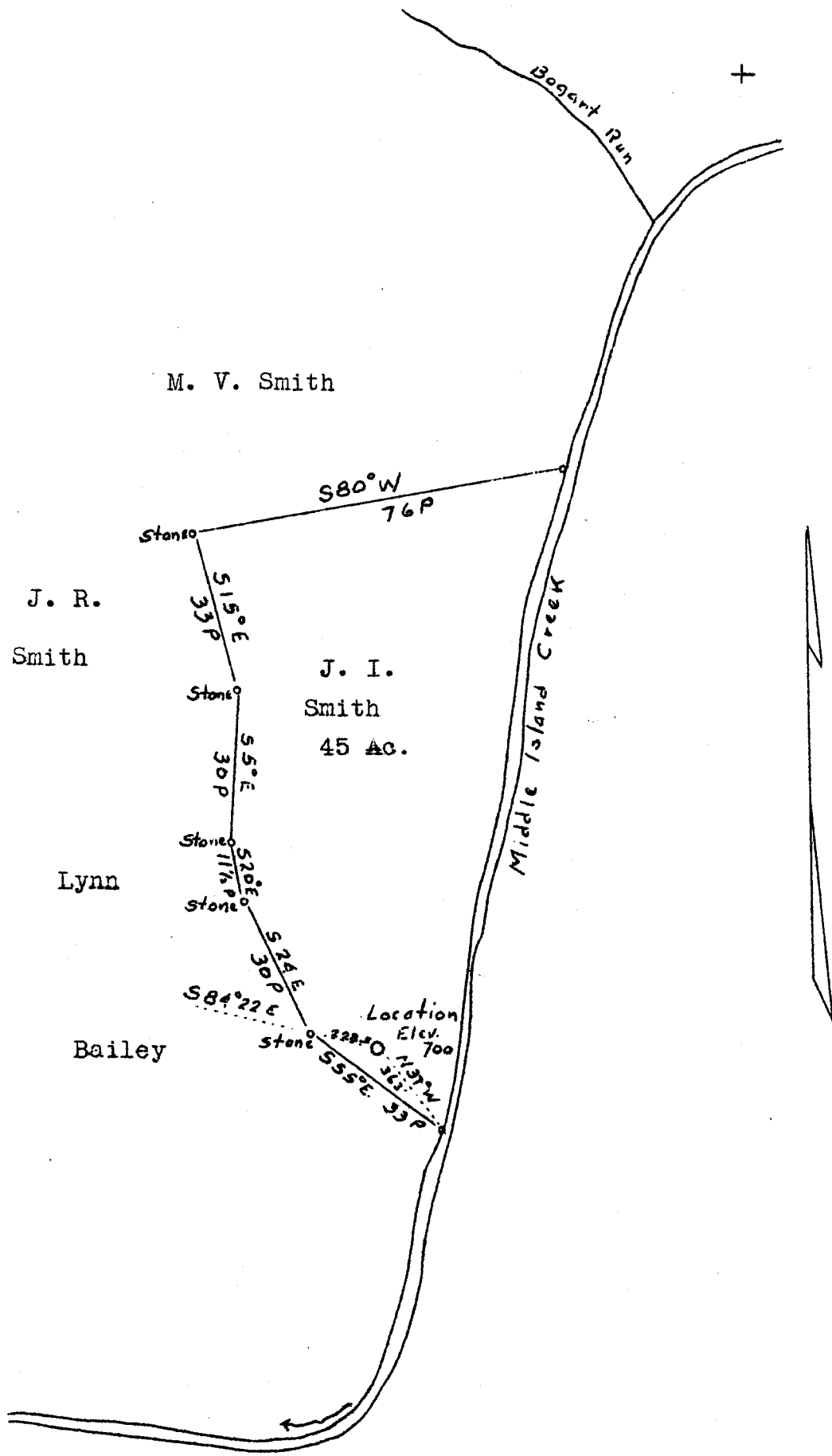


Latitude 39 25'

Longitude 81° 05'



Company GRANT & ATHEY OIL & GAS CO.
 Address Williamstown, W. Va.
 Farm J. I. Smith
 Tract Acres 45 Lease No. _____
 Well (Farm) No. 1 Serial No. _____
 Elevation (Spirit Level) 700
 Quadrangle St. Marys, W. Va - O.
 County Pleasants District Union
 Engineer Parker E. Peters
 Engineers Registration No. # 485
 Date Oct. 20, 1936 Scale 1" - 30rds

STATE OF WEST VIRGINIA
 Department of Mines
 OIL AND GAS DIVISION
 CHARLESTON

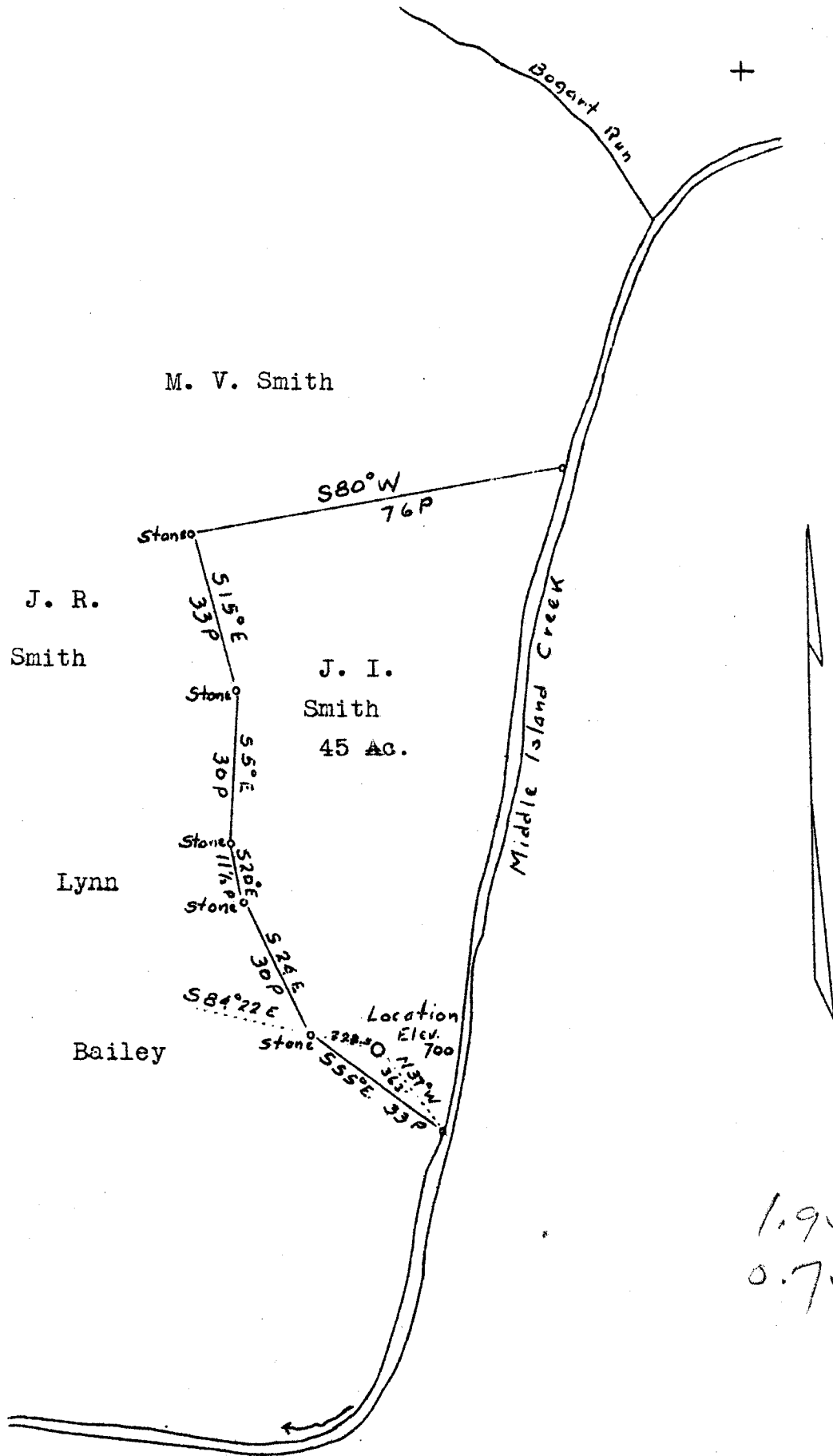
WELL LOCATION MAP
 File No. 81-P

+ Denotes location of well on U. S. Topographic Maps, scale 1 to 62,500, latitude and longitude lines being represented by border lines as shown

- Denotes one inch spaces on border line of original tracing.

Latitude 39 25'

Longitude 81° 05'



1.95 W
0.75 P

Company GRANT & ATHEY OIL & GAS CO.
 Address Williamstown, W. Va.
 Farm J. I. Smith
 Tract Acres 45 Lease No.
 Well (Farm) No. 1 Serial No.
 Elevation (Spirit Level) 700
 Quadrangle St. Marys, W. Va - 0.
 County Pleasants District Union
 Engineer Parker E. Peters
 Engineers Registration No. # 485
 Date Oct. 20, 1936 Scale 1" = 30rds

STATE OF WEST VIRGINIA
 Department of Mines
 OIL AND GAS DIVISION
 CHARLESTON

WELL LOCATION MAP
 File No. PLEAS-81

+ Denotes location of well on U. S. Topographic Maps, scale 1 to 62,500, latitude and longitude lines being represented by border lines as shown

- Denotes one inch spaces on border line of original tracing.

1-60

WEST VIRGINIA DEPARTMENT OF MINES

OIL AND GAS DIVISION

WELL RECORD

Permit No. Pleas-81

St. Marys Quad. C

Oil Well

Company - Geo. W. Grant
 Address - Williamstown, W. Va.
 farm - J. C. Smith. Acres- 25
 Location - Middle Island Cr.
 Well No. - One. Elev. 700'
 District - Union County- Pleasant
 Surface - J. C. Smith
 Address - Bens Run
 Mineral - J. C. Smith, R. A. Bell & Lanley Heirs.
 Drilling - Commenced- 12-20-36
 Date Shot - Completed- 3-3-37
 Open /Flow - 3-10. Depth- 512
 Rock Press.-
 Oil - Show of oil
 Fresh Water-
 Salt Water -

CASING & TUBING

16 245 8" Casing

Formation Color				Hor	TOP	Bottom	Result	Formation Color				Hor	TOP	Bottom	Result
Sand Stone		H		081	34		0-34								
Red		S		34	54		34-54								
Light Red		S		20	134		54-134								
Slate		S		80	234		134-234								
White Red		S		100											
Shell		H		100	334		234-334								
				80	414		334-414								
Pink		S		10	424		414-424								
Shell		H		20	444		424-444								
				10	454		444-454								
Pink		S		20	474		454-474								
Lime		H		21	495		474-495								
Sand	1-100	M		25	520		495-520								

Good show of oil. Well will have to be given pumping test perhaps a small producer.