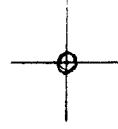


LATITUDE 39° 22' 30"



LONGITUDE 81° 12' 30"

7'5 OGIS topo location

7.5' loc 0.52 S 15' loc _____
0.93 W (calc.) _____

Company _____

Farm _____

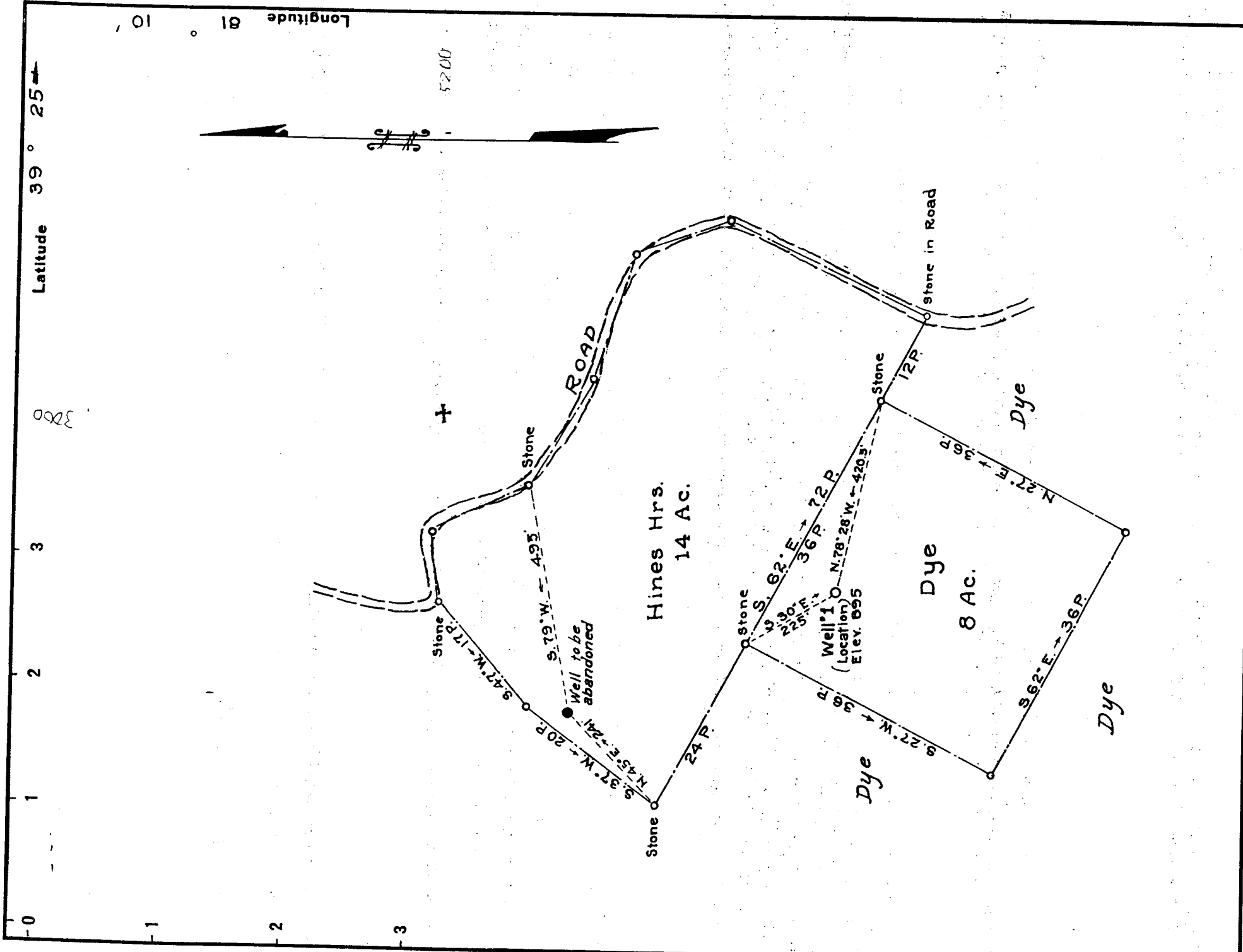
Quad SCHULTZ 7 1/2'

County PLEASANTS

District WASHINGTON

WELL LOCATION MAP

File No. 073-0080



Company W.C. Patterson Oil & Gas Co.
 Address Jamestown, N.Y.
 Farm Dye
 Tract Acres 8 Lease No. _____
 Well (Farm) No. 1 Serial No. _____
 Elevation (Spirit Level) 895
 Quadrangle St. Marys W.C.
 County Pleasants District Washington
 Engineer Parker E. Petera
 Engineer's Registration No. 485
 File No. _____ Drawing No. _____
 Date Oct. 31, 1936 Scale 1 inch = 16 Poles

STATE OF WEST VIRGINIA
 DEPARTMENT OF MINES
 OIL AND GAS DIVISION
 CHARLESTON

WELL LOCATION MAP
 FILE NO. PLEAS-80

- + Denotes location of well on United States Topographic Maps, scale 1 to 62,500, latitude and longitude lines being represented by border lines as shown.
- Denotes one inch spaces on border line of original tracing.

WEST VIRGINIA DEPARTMENT OF MINES

OIL AND GAS DIVISION

WELL RECORD

Permit No. Pleas.-80

St. Marys Quad.

Oil Well

CASING & TUBING

Company W.C. Patterson
 Address Box 914, Jamestown, N.Y.
 Farm W.H. Dye Hrs. Acres 8
 Location French Creek
 Well No. One Elev. 895'
 District Washington County Pleasants
 Surface W.H. Dye Hrs, St. Marys, W. Va.
 Mineral W.H. Dye Hrs., St. Marys, W. Va.
 Drilling Commenced Jan. 2, 1937
 Completed April 28, 1937
 Oil 5 Bbls., 1st. 24 hrs.

8 1/4
6 1/2

150'
854'

ABD
5/39

Formation Color					Formation Color				
	Top	Bottom	Result		Top	Bottom	Result		
✓ Cow Run		515	550	Water					
✓ 2nd. Cow Run		640		125'					
✓ 1st Salt Sand		854	990	Water					
✓ 2nd Salt Sand		990	1050	1388&					
✓ 3rd Salt Sand		1090	1190	1399					
✓ Gas Sand w/pea	May	1271	1285	Oil					
✓ Maxon	May	1351	1399	1281					
				Sm. Gas					
				1363					

UNITED STATES DEPARTMENT OF JUSTICE
FEDERAL BUREAU OF INVESTIGATION

DATE

MEMPHIS, TENNESSEE

RECEIVED

FILE NO.

DATE

1001
1005

40
20

MEMPHIS, TENNESSEE
FEDERAL BUREAU OF INVESTIGATION
U. S. DEPARTMENT OF JUSTICE

MEMPHIS, TENNESSEE
FEDERAL BUREAU OF INVESTIGATION
U. S. DEPARTMENT OF JUSTICE

MEMPHIS, TENNESSEE
FEDERAL BUREAU OF INVESTIGATION
U. S. DEPARTMENT OF JUSTICE

MEMPHIS, TENNESSEE
FEDERAL BUREAU OF INVESTIGATION
U. S. DEPARTMENT OF JUSTICE

MEMPHIS, TENNESSEE
FEDERAL BUREAU OF INVESTIGATION
U. S. DEPARTMENT OF JUSTICE

