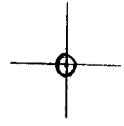


LATITUDE 39° 25' 00"



00, 50, 18 LONGITUDE

7'5 OGIS topo location

7.5' loc 0.715 15' loc _____
0.70W (calc.) _____

Company _____

Farm _____

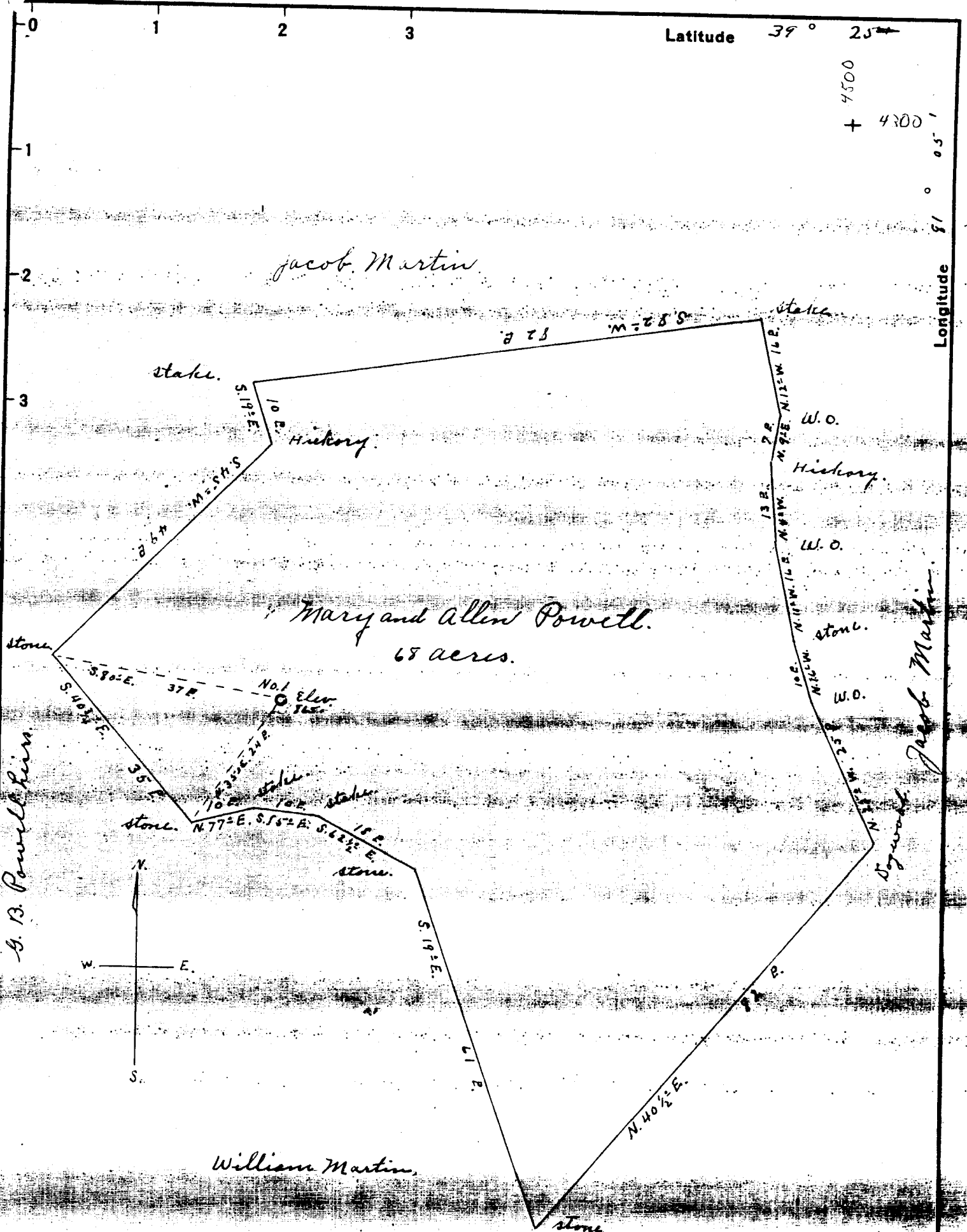
Quad BENS RUN 7 1/2'

County PLEASANTS

District LAFAYETTE

WELL LOCATION MAP

File No. 073-0077



Company	<i>F. M. Clymer and Co.</i>	
Address	<i>Rathbone Add Marietta</i>	
Farm	<i>Mary and Allen Powell</i>	
Tract	Acres <i>68</i>	Lease No. _____
Well (Farm) No.	<i>one</i>	Serial No. _____
Elevation (Spirit Level)	<i>865'</i>	
Quadrangle	<i>St. Marys</i>	<i>WVa</i>
County	<i>Pleasant</i>	District <i>Lafayette</i>
Engineer	<i>Joe Triplett</i>	
Engineer's Registration No.	_____	
File No.	Drawing No. _____	
Date	<i>Oct. 19 1936</i> Scale <i>20 R. to 1"</i>	

STATE OF WEST VIRGINIA
DEPARTMENT OF MINES
OIL AND GAS DIVISION
CHARLESTON

WELL LOCATION MAP
FILE NO. *PLEAS-77*

+ Denotes location of well on United States Topographic Maps, scale 1 to 62,500, latitude and longitude lines being represented by border lines as shown.

- Denotes one inch spaces on border line of original tracing.

WEST VIRGINIA DEPARTMENT OF MINES
OIL AND GAS DIVISION

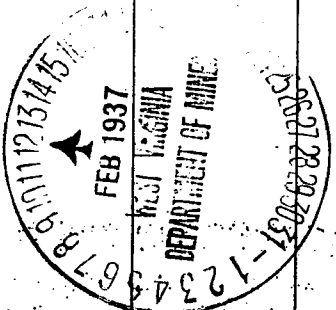
WELL RECORD

Permit No. *Plum-77*

Oil or Gas Well.....
(Kind)

Company..... <i>F. W. Calhoun Co</i>	Casing and Tubing	Used in Drilling	Left in Well	Packers
Address..... <i>Wesleyville, Ohio</i>				
Farm..... <i>Mary Allen Powell</i> Acres <i>6.8</i>	Size			Kind of Packer.....
Location (waters).....				
Well No. <i>One</i> Elev. <i>865</i>	16.....			Size of.....
District..... <i>Lafayette</i> County..... <i>Plum</i>	18.....			Depth set.....
The surface of tract is owned in fee by..... <i>Mary Allen Powell</i>	10.....			Perf. top.....
Address..... <i>Super Valley Ave</i>	8 1/4 <i>260' Represented to us</i>			Perf. bottom.....
Mineral rights are owned by..... <i>Same</i>	6 5/8 <i>1170</i>			Perf. top.....
Address.....	5 3/16			Perf. bottom.....
Drilling commenced..... <i>2/28/36</i>	3.....			
Drilling completed..... <i>2/8/37</i>	2.....			
Date shot.....	Liners Used.....			
Open Flow /10ths Water in..... Inch				
/10ths Merc. in..... Inch				
Volume..... Cu. Ft.	CASING CEMENTED.....	SIZE.....	No. FT.....	Date.....
Rock Pressure..... lbs..... hrs.				
Oil..... bbls., 1st 24 hrs.	COAL WAS ENCOUNTERED AT.....	FEET.....	INCHES.....	
Fresh water..... feet..... feet	FEET.....	INCHES.....	FEET.....	INCHES.....
Salt water..... feet..... feet	FEET.....	INCHES.....	FEET.....	INCHES.....

Formation	Color	Hard or Soft	Top	Bottom	Oil Gas or Water	Depth Found	Remarks
<i>Fine Sand</i>		<i>Hard</i>	<i>1303</i>	<i>1390</i>	<i>Gas</i>	<i>1330-1380</i>	<i>Small Show</i>
<i>Shale</i>	<i>Black</i>	<i>Soft</i>	<i>1390</i>	<i>1440</i>			
<i>Slaty Sand</i>		<i>Hard</i>	<i>1440</i>	<i>1460</i>			
<i>Shale</i>	<i>Black</i>	<i>Soft</i>	<i>1460</i>	<i>1545</i>			
<i>Mofon Sand</i>		<i>Hard</i>	<i>1545</i>	<i>1565</i>			
<i>Shale</i>	<i>Black</i>	<i>Soft</i>	<i>1565</i>	<i>1590</i>			
<i>Big Lime</i>		<i>Hard</i>	<i>1590</i>	<i>1661</i>			
<i>Keokuk Sand</i>		<i>Hard</i>	<i>1661</i>	<i>1704</i>			
<i>Biplyian</i>		<i>Hard</i>	<i>1704</i>	<i>1785</i>	<i>Oil Gas</i>	<i>1704-1714</i>	<i>Small Show</i>
<i>Shale</i>	<i>Black</i>		<i>1785</i>	<i>1795</i>			
<i>Squaw</i>			<i>1795</i>	<i>1830</i>			
<i>Sandy Shale</i>	<i>Dark</i>		<i>1830</i>	<i>1843</i>			
<i>Bottom of Hole</i>			<i>1843</i>				



POWELL, MARY & ALLEN, NO. 1.

Pleas-77.

By F. M. Clymer & Co.

Lafayette Dist.