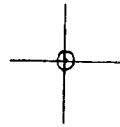


LATITUDE 39° 22' 30"

03.00.18 LONGITUDE



7.5 OGIS topo location

7.5' loc 1.665 15' loc _____
0.98W (calc.) _____

Company _____

Farm _____

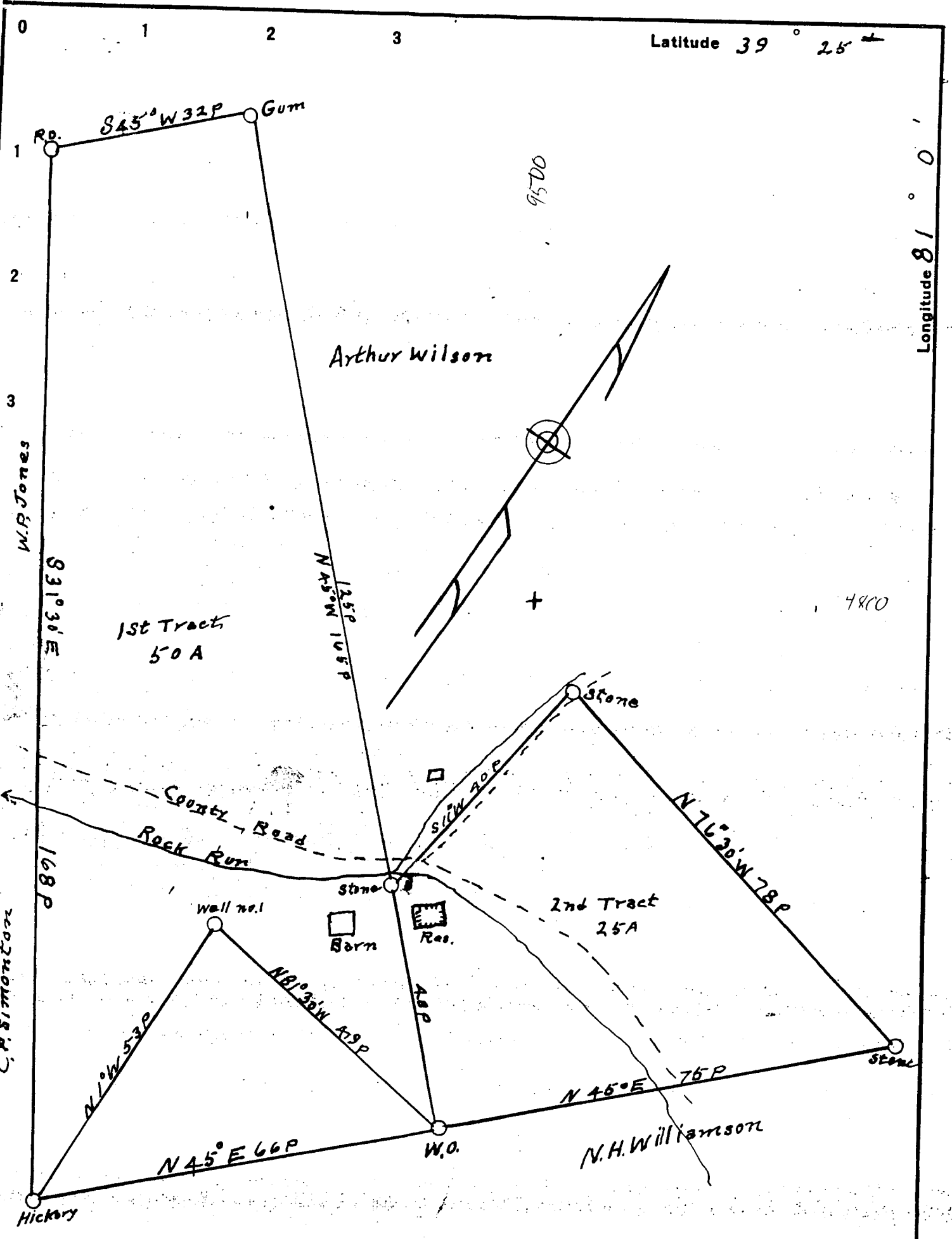
Quad ELLENBORO 7 1/2'

County PLEASANTS

District LAFAYETTE

WELL LOCATION MAP

File No. 073-0074



Company C.B. Smith & A.B. Handershot

Address Parkersburg W.V.A.

Farm L. Oliver Jones

Tract 1 Acres 50 Lease No. _____

Well (Farm) No. 1 Serial No. _____

Elevation (Spirit Level) 808'

Quadrangle St Marys

County Pleasants District Lafayette

Engineer J.E. Anderson

Engineer's Registration No. Surveyor

File No. _____ Drawing No. _____

Date Aug. 24 1936 Scale 1 in = 20 Feet

STATE OF WEST VIRGINIA
DEPARTMENT OF MINES
OIL AND GAS DIVISION
CHARLESTON

WELL LOCATION MAP

FILE NO. PLEAS-74

No Well Record

+ Denotes location of well on United States Topographic Maps, scale 1 to 62,500, latitude and longitude lines being represented by border lines as shown.

- Denotes one inch spaces on border line of original tracing.

JONES, L. OLIVER, NO. 1.

Pleas-74.

By C. B. Smith & A. B. Hendershot.

Lafayette Dist.