

LATITUDE 39° 17' 30"



LONGITUDE 109° 51' 18"

7.5 OGIS topo location

7.5' LOC 0.65 S 15' LOC \_\_\_\_\_  
0.60 W (calc.) \_\_\_\_\_

Company \_\_\_\_\_

Farm \_\_\_\_\_

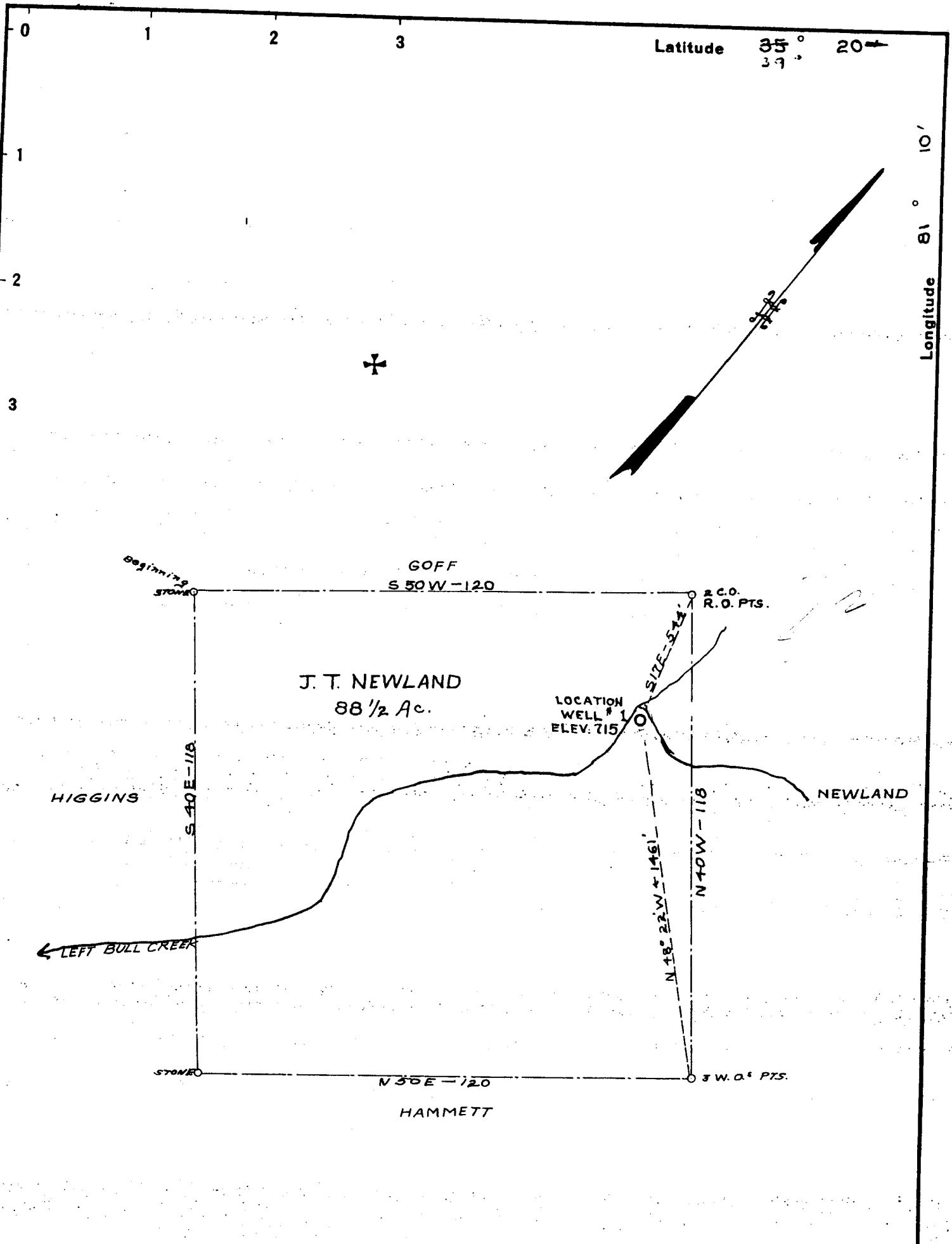
Quad WILLOW ISLAND 7 1/2'

County PLEASANTS

District JEFFERSON

WELL LOCATION MAP

File No. 073-0071



Company LOCKER OIL COMPANY  
 Address 1618 Lynn St., Parkersburg, W. Va.  
 Farm J.T. Newland  
 Tract \_\_\_\_\_ Acres 88 1/2 Lease No. \_\_\_\_\_  
 Well (Farm) No. 1 Serial No. \_\_\_\_\_  
 Elevation (Spirit Level) 715  
 Quadrangle St. Marys (s.w.)  
 County Pleasants District Jefferson  
 Engineer Parker E. Peters  
 Engineer's Registration No. 485  
 File No. \_\_\_\_\_ Drawing No. \_\_\_\_\_  
 Date \_\_\_\_\_ Scale 1 Inch = 30 Poles

STATE OF WEST VIRGINIA  
 DEPARTMENT OF MINES  
 OIL AND GAS DIVISION  
 CHARLESTON

**WELL LOCATION MAP**  
 FILE NO. PLEAS - 71

+ Denotes location of well on United States Topographic Maps, scale 1 to 62,500, latitude and longitude lines being represented by border lines as shown.

- Denotes one inch spaces on border line of original tracing.

WEST VIRGINIA DEPARTMENT OF MINES

OIL AND GAS DIVISION

WELL RECORD

Permit No. 71

Oil well

St. Marys S. W. Quad.

Company - Locker Oil Co.  
 Address - Parkersburg, W. Va.  
 Farm - J. T. Newland. Acres-157  
 Location - Bull Creek  
 Well No. - One. Elev. 715 feet  
 District - Jefferson. County- Pleasants  
 Surface & - J. T. Newland  
 Mineral - St. Marys, W. Va.  
 Drilling - Commenced- 12-8-36  
 Completed- 4-15-37  
 Date Shot - 4-16. Depth- 1080  
 Open Flow - Est. 25,000 cu. ft.  
 Rock Press.- No guage  
 Oil - 3 bbls. 1st 24 hrs.  
 Fresh Water- 26 feet  
 Salt Water - None

CASING & TUBING

8 1/4 95'  
 6 1/4 643'  
 4-7/8 906 loft  
 in well.

PACKER

Kind - Hookwall  
 Size - 4-7/8  
 Depth- 906'

FORMATION	Color	H <sub>2</sub> O	Top	Bottom	Result	FORMATION	Color	H <sub>2</sub> O	Top	Bottom	Result
Shale & Red Rock	Red & Gray	S	0	515							
Sand & Lime	Blue	H	515	529							
Sand	Blue	S	529	549							
Red Rock	Red	S	549	585							
Lime	Gray	H	585	605							
Slate & Red R.	"										
	& Red	S	605	642							
Sand & Lime	Gray	H	642	667							
Sandy Slate	Gray	S	667	882							
Sand	White	S	882	981							
Shale	Gray	S	981	1067	Gas 1072 est. 15 M						
Shale <i>and C.R.</i>	White	H	1067	1100	Oil 1077-85 Est. 3 bbl						
Shale	Black	S	1100	1125							
Sandy Slate	Blue	S	1125	1145							
Shale	Black	S	1145	1165							
Lime	Gray	H	1165	1350							
Shale	Black	S	1350	1410							
Lime	Blue	H	1410	1417							
Pencil Cave	Blue	S	1417	1420							
Big Lime	White	H	1420	1500							
Sand <i>Keener</i>	Blue	H	1500	1515							
Sand <i>B.F.</i>	White	H	1515	1585	Gas 1561 Est. 5 M						
Shale	Black	S	1585	1611							
Broken Sand	Gray	H	1611	1649	Gas 1632 Small amt. est. 5 M						
Shale	Black	S	1649	1683							

**RECEIVED**  
**MAY 17 1937**  
**WEST VIRGINIA**  
**GEOLOGICAL SURVEY**