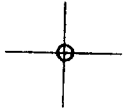


LATITUDE 39° 22' 30"

LONGITUDE



7'5 OGIS topo location

7.5' 10C 2.025 15' 10C _____
1.80W (calc.) _____

Company _____

Farm _____

Quad WILLOW ISLAND 7 1/2'

County PLEASANTS

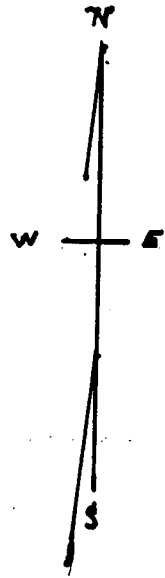
District GRANT

WELL LOCATION MAP

File No. 073-0068

Latitude 39 25

Longitude 81.15



0
1
2
3

3

HUGH MARGARET

10506

BEN COHEN

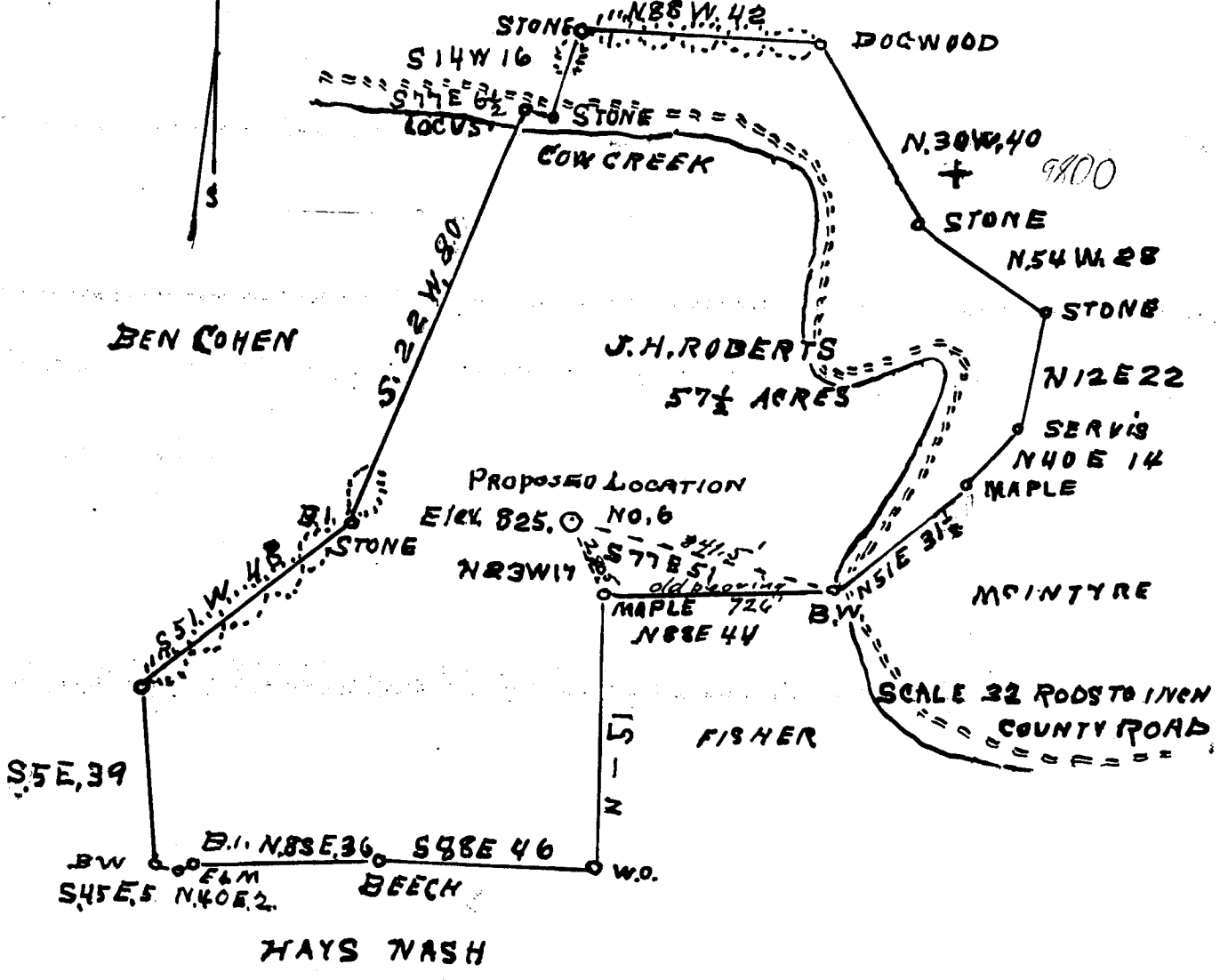
J. H. ROBERTS

57 1/2 ACRES

MCINTYRE

FISHER

HAYS NASH



Company C. L. BARRON

Address ST. MARYS W. VA.

Farm J. H. ROBERTS

Tract ONE Acres 57 1/2 Lease No. _____

Well (Farm) No. SIX Serial No. _____

Elevation (Spirit Level) 825.0

Quadrangle Marietta E.

County PLEASANTS District GRANT

Engineer J. V. Dunbar

Engineer's Registration No. 65

File No. C. 23 Drawing No. _____

Date July 11, 1936 Scale 32 Rods to 1 in.

STATE OF WEST VIRGINIA
DEPARTMENT OF MINES
OIL AND GAS DIVISION
CHARLESTON

WELL LOCATION MAP
FILE NO. PLEAS-68

+ Denotes location of well on United States Topographic Maps, scale 1 to 62,500, latitude and longitude lines being represented by border lines as shown.

- Denotes one inch spaces on border line of original tracing.

WEST VIRGINIA DEPARTMENT OF MINES
OIL AND GAS DIVISION

WELL RECORD

Pleas-68

Permit No. *Pleas-68*

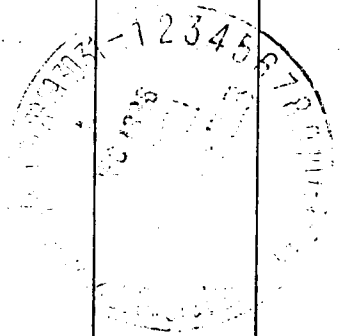
Oil or Gas Well Gas
(Kind)

Company..... Harron Oil Company
Address..... St. Marys, W. Va.
Farm..... J. H. Roberts Acres.....
Location (waters)..... COX Creek
Well No..... 3 Elev..... 425
District..... Grant County..... Pleasants
The surface of tract is owned in fee by..... J. H. Roberts
Address..... St. Marys, W. Va.
Mineral rights are owned by..... G. F. Roberts,
Address..... St. Marys, W. Va.
Drilling commenced..... Aug. 10, 36
Drilling completed..... Sept. 21, 36
Date shot..... Depth of shot.....
Open Flow /10ths Water in..... Inch
/10ths Merc. in..... Inch
Volume..... Cu. Ft.
Rock Pressure..... lbs..... hrs.
Oil..... bbls., 1st 24 hrs.
Fresh water..... None feet..... feet
Salt water..... 433 feet..... feet

Casing and Tubing	Used in Drilling	Left in Well	Packers
Size			
16.....			Kind of Packer.....
13.....			
10.....			Size of.....
8 1/4.....			
6 5/8..... <u>120</u>	<u>120</u>		Depth set.....
5 3/16.....			
3.....			Perf. top.....
2.....			Perf. bottom.....
Liners Used.....			Perf. top.....
			Perf. bottom.....

CASING CEMENTED..... SIZE..... No. FT..... Date.....
COAL WAS ENCOUNTERED AT..... FEET..... INCHES
..... FEET..... INCHES..... FEET..... INCHES
..... FEET..... INCHES..... FEET..... INCHES

Formation	Color	Hard or Soft	Top	Bottom	Oil Gas or Water	Depth Found	Remarks
<u>Horseneck</u>		<u>Hard</u>	<u>435</u>	<u>504</u>	<u>Gas</u>	<u>433</u>	



ROBERTS, G. F. & KATHERINE, NO. 6.

Pleas-68.

By C. L. Barron.

Grant Dist.