

LATITUDE 39° 22' 30"



00' 01" 18" LONGITUDE

7'5 OGIS topo location

7.5' loc 1.185 15' loc _____
 0.58W (calc.) _____

Com. _____

Farm _____

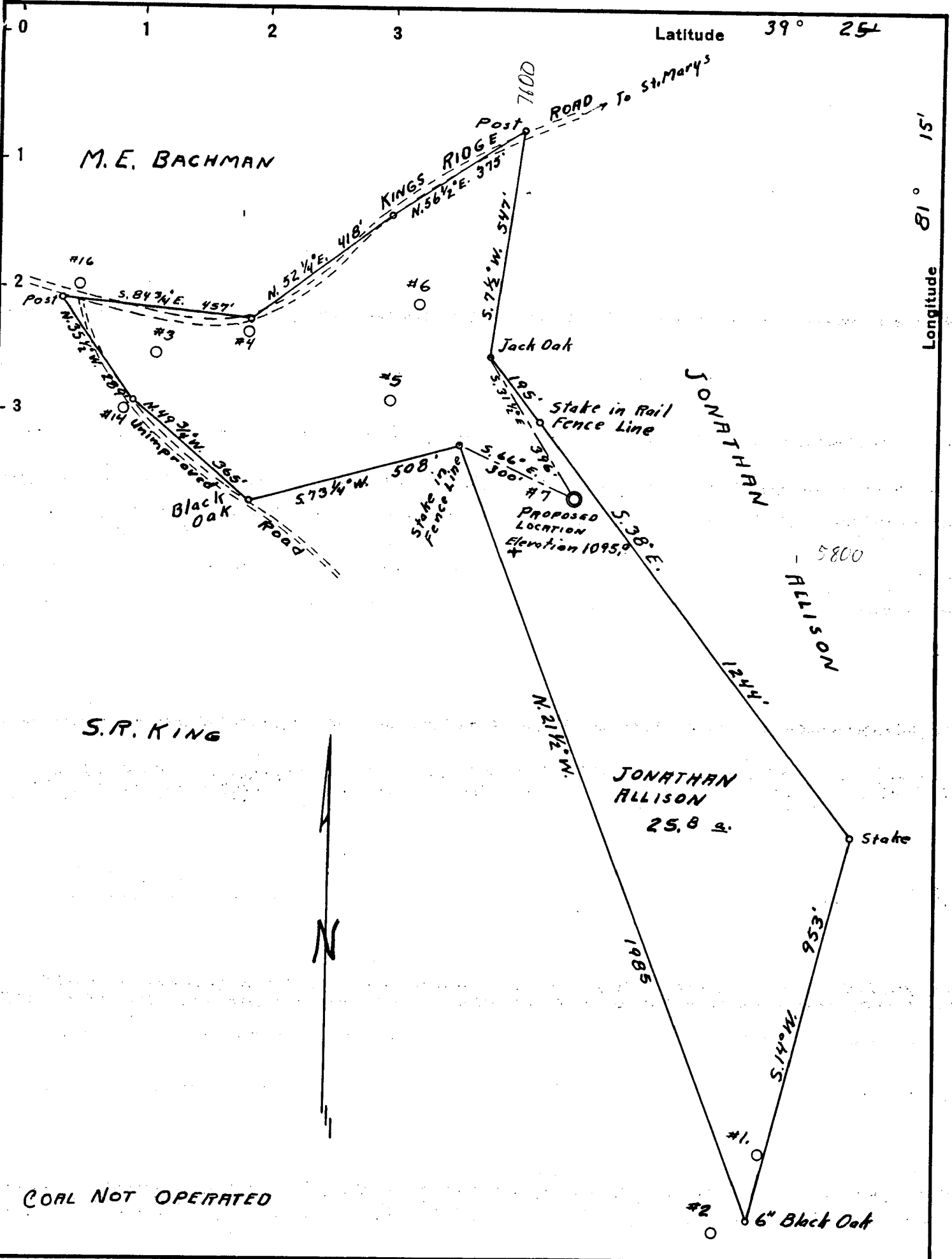
Quad SCHULTZ 7 1/2'

County PLEASANTS

District McKIM

WELL LOCATION MAP

File No. 073 - 0063



Company DINSMOOR AND COMPANY
 Address SAINT MARYS, W. VA.
 Farm JONATHAN ALLISON
 Tract Acres 25.8 Lease No.
 Well (Farm) No. 7 Serial No.
 Elevation (Spirit Level) 1095.0
 Quadrangle SAINT MARYS
 County PLEASANTS District WASHINGTON
 Engineer F.M. Chambers
 Engineer's Registration No. 771
 File No. Drawing No.
 Date June 3, 1936 Scale 1 inch = 300 feet

STATE OF WEST VIRGINIA
 DEPARTMENT OF MINES
 OIL AND GAS DIVISION
 CHARLESTON

WELL LOCATION MAP
 FILE NO. Pleas-63

+ Denotes location of well on United States Topographic Maps, scale 1 to 62,500, latitude and longitude lines being represented by border lines as shown.

- Denotes one inch spaces on border line of original tracing.

WEST VIRGINIA DEPARTMENT OF MINES

OIL AND GAS DIVISION

WELL RECORD

Gas Well

Permit No. Pleas-63

St. Marys Quad.

Company - Dinsmoor & Co
 Address - St. Marys, W. Va.
 Farm - Jonathan Allison. Acres- 25
 Location -
 Well No. - Seven. Elev. 1095.
 District - Washington. County- Pleasant
 Surface & Mineral - Jonathan Allison
 Drilling - St. Marys, W. Va.
 Date Shot - Depth- 950-957
 Open Flow -
 Rock Press.-
 Oil -
 Fresh Water-
 Salt Water -

CASING & TUBING

8 425'
 6 1/2 942 1/2'

6 1/2 casing set in cement at 942 1/2 filled around casing with mud to the top.

Formation	Color	Top	Bottom	Result	Formation	Color	Top	Bottom	Result
Clay	Red		10						
Sand & Shale		10	230						
Sand & Shale		230	390						
Sand (stone)		390	410						
Slate		410	470						
Sand		470	510						
Slate		510	540						
Red Rock	Red	540	610	Shelly					
Slate	Black	610	620						
Red Rock	Black	620	650						
Slate	white	650	695						
Sand		695	710						
Slate		710	740						
Big Red	Red	740	830						
Horse Neck		830	835						
Slate	White	835	895						
Shale	Black	895	940						
Cow Run Sand		940	958						
Borken Formation		944	947						
White Sand		950							
Soft Sand		951		Oil 953-55					
Hard Sand		956 1/2	957 1/2						
Slate		958	967						

RECEIVED
MAY 11 1937
WEST VIRGINIA
GEOLOGICAL SURVEY