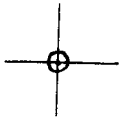


LATITUDE 39° 22' 30"

LONGITUDE 81° 02' 30"



7.5 OGIS topo location

7.5' loc 1.48 S 15' loc _____
 1.87 W (calc.) _____

Comp _____

Farm _____

Quad ELLENBORO 7 1/2'

County PLEASANTS

District LAFAYETTE

WELL LOCATION MAP

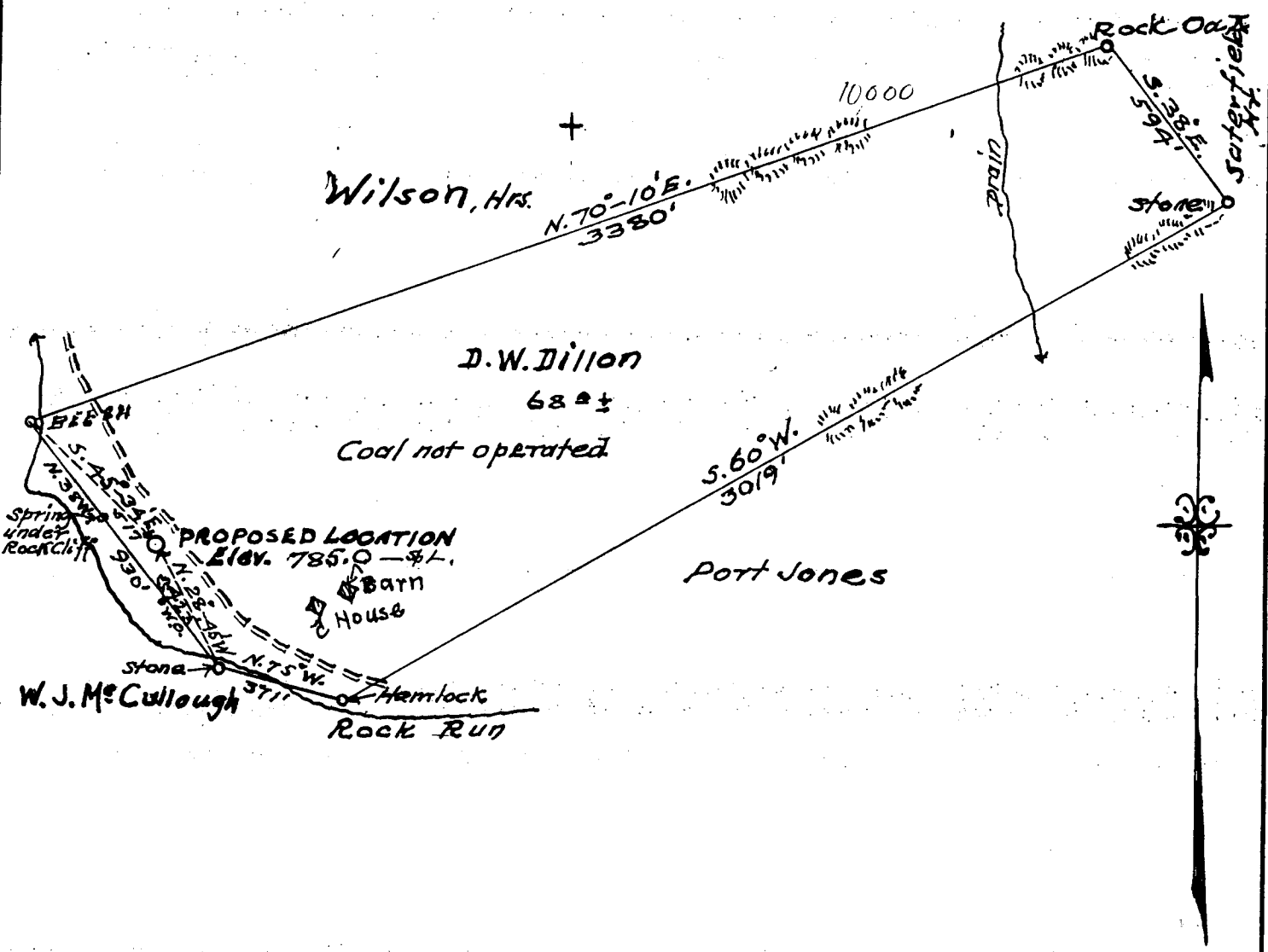
File No. 023 - 0061

0 1 2 3 Latitude 39° - 25'

1 0098

2

3 Longitude 81° - 00'



Company ACCIDENTAL OIL & GAS COMPANY

Address ST. MARYS, W.VA.

Farm D. W. DILLON

Tract ONE Acres 68± Lease No. _____

Well (Farm) No. THREE Serial No. _____

Quadrangle ST. MARYS N. E.

County PLEASANTS

District LAFYETTE

Engineer J. T. Dunbar

Engineer's Registration No. 65

File No. C. 23-37L Drawing No. _____

Date April 17 1936 Scale 1 INCH = 500 FEET

STATE OF WEST VIRGINIA
DEPARTMENT OF MINES
OIL AND GAS DIVISION
CHARLESTON

WELL LOCATION MAP
FILE NO. PLEAS-61

+ Denotes location of well on United States Topographic Maps, scale 1 to 62,500, latitude and longitude lines being represented by border lines as shown.

- Denotes one inch spaces on border line of original tracing.

STATE OF WEST VIRGINIA
DEPARTMENT OF MINES
OIL AND GAS DIVISION

Pleas-61

WELL RECORD

Permit No.

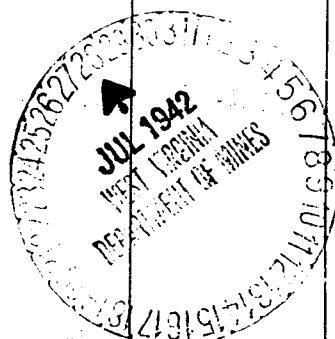
Oil or Gas Well.....
(Kind)

Company Accidental Oil & Gas Co.
Address St. Marys, West Va.
Farm D. W. Dillon Acres 68
Location (waters) Rock Run
Well No. 3 Elev. 725
District Lafayette County Pleasants
The surface of tract is owned in fee by D. W. Dillon
Address St. Marys, W. Va.
Mineral rights are owned by D. W. Dillon
Address St. Marys, W. Va.
Drilling commenced on or about July, 1st 1936
Drilling completed Aug. 5th 1936
Date shot Aug. 5th 1936 Depth of shot 1545
Open Flow /10ths Water in Inch
/10ths Merc. in Inch
Volume 25 T Cu. Ft.
Rock Pressure 60lb. lbs. hrs.
Oil 1/8 bbl bbls., 1st 24 hrs.
Fresh water feet
Salt water feet

Casing and Tubing	Used in Drilling	Left in Well	Packers
Size			
16			Kind of Packer
13			
10	150	None	Size of
8 3/4	950	None	
6 5/8	1325	1325	Depth set
5 3/16			
3			Perf. top
2			Perf. bottom
Liners Used			Perf. top
			Perf. bottom

CASING CEMENTED SIZE No. FT. Date
COAL WAS ENCOUNTERED AT FEET INCHES
..... FEET INCHES FEET INCHES
..... FEET INCHES FEET INCHES

Formation	Color	Hard or Soft	Top	Bottom	Oil Gas or Water	Depth Found	Remarks
Sand	Light	Hard	1495 to 1519		Gas	1519	Very small
Sand	Light	Hard	1545		Gas Oil	1545 1560	Light 1/8 Bbl
<i>Total depth</i>		<i>1565'</i>					
<p>This is all the record we have of this well, and it was drilled about July, 1936. we have no plat, so if you have one in your files, please let me know, as we wish to plug this well, and pull the 6 inch casing so send us the proper papers, for same.</p>							



WILSON, F. A., NO. 3.

Pleas-61.

By Accidental Oil & Gas Co.

Lafayette Dist.