

LATITUDE 39° 20' 00"



LONGITUDE 81° 15' 00"

T5 OGIS topo location

7.5' loc 0.43 S 15' loc _____
 1.15 W (calc.) _____

Company _____

Farm _____

Quad WILLOW ISLAND 7 1/2'

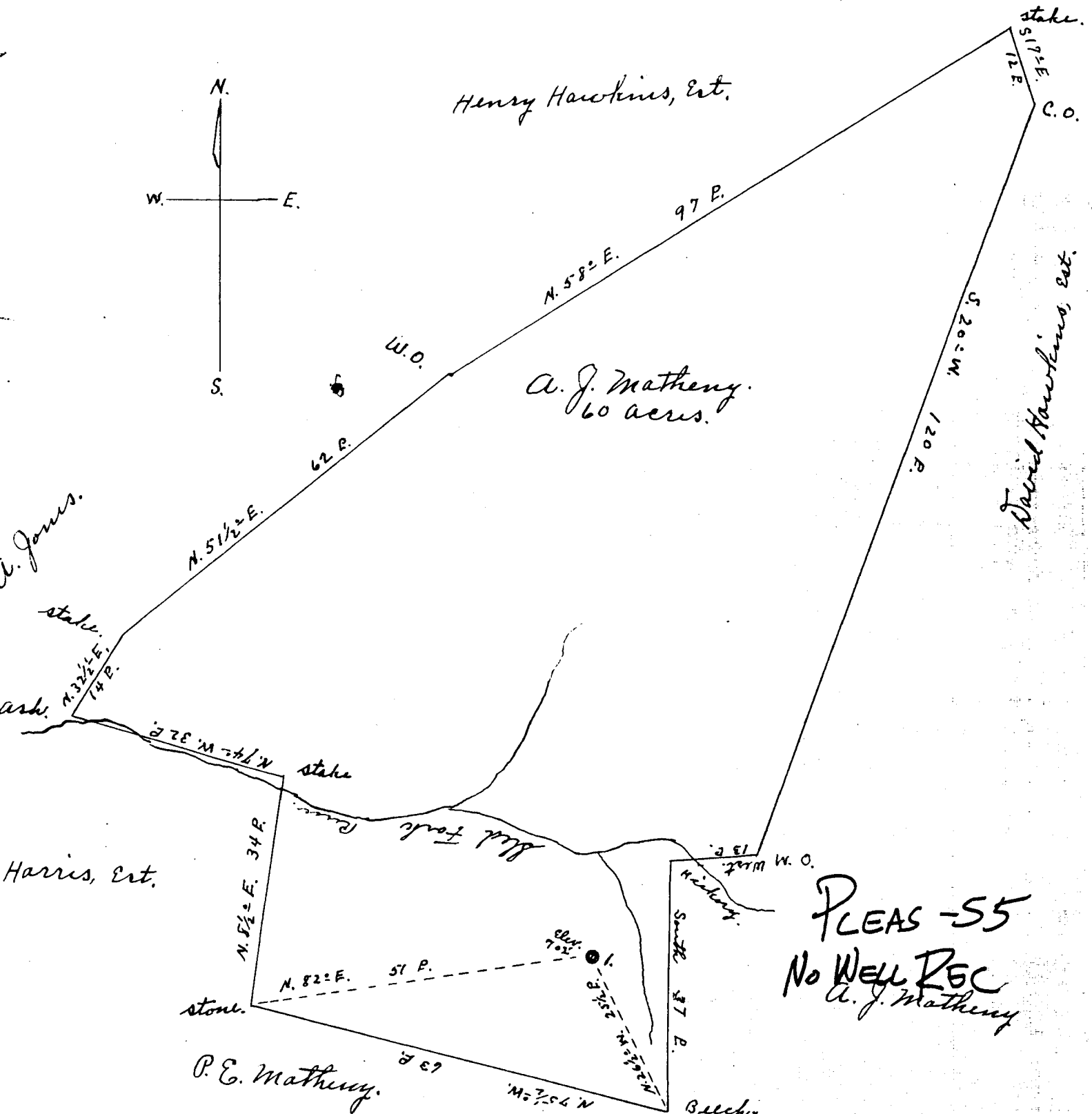
County PLEASANTS

District JEFFERSON

WELL LOCATION MAP

File No. 073-0055

posed Location of Well No. 1 of The
 Oil and Gas Co. of Richwood Penna. on the
 Henry farm Consisting of 60 acres, Located
 Jefferson District Pleasants County West Virginia.



I, The undersigned, here by Certify that this map is
 correct and shows all the information to the best
 of my knowledge and belief, required by the
 Oil and Gas Section of the Mining Laws of West Virginia.
 Scale - 20 P. to 1" Jno. Triplett, Engineer.

Acknowledged before me a Notary Public for
 Pleasants County West Virginia, this 28 day of
 November 1935
 H. P. Engle, Notary Public.
 My Commission expires April 6 1936

MATHENY, A. J., NO. 1.

Pleas-55.

By Richeyville Oil & Gas Co.

Jefferson Dist.