

LATITUDE 39° 22' 30"

08° 20' 18" LONGITUDE



7'5 OGIS topo location

7.5' loc 2765 15' loc _____
 1.42 W (calc.) _____

Company _____

Farm _____

Quad ELLENGORO 7 1/2'

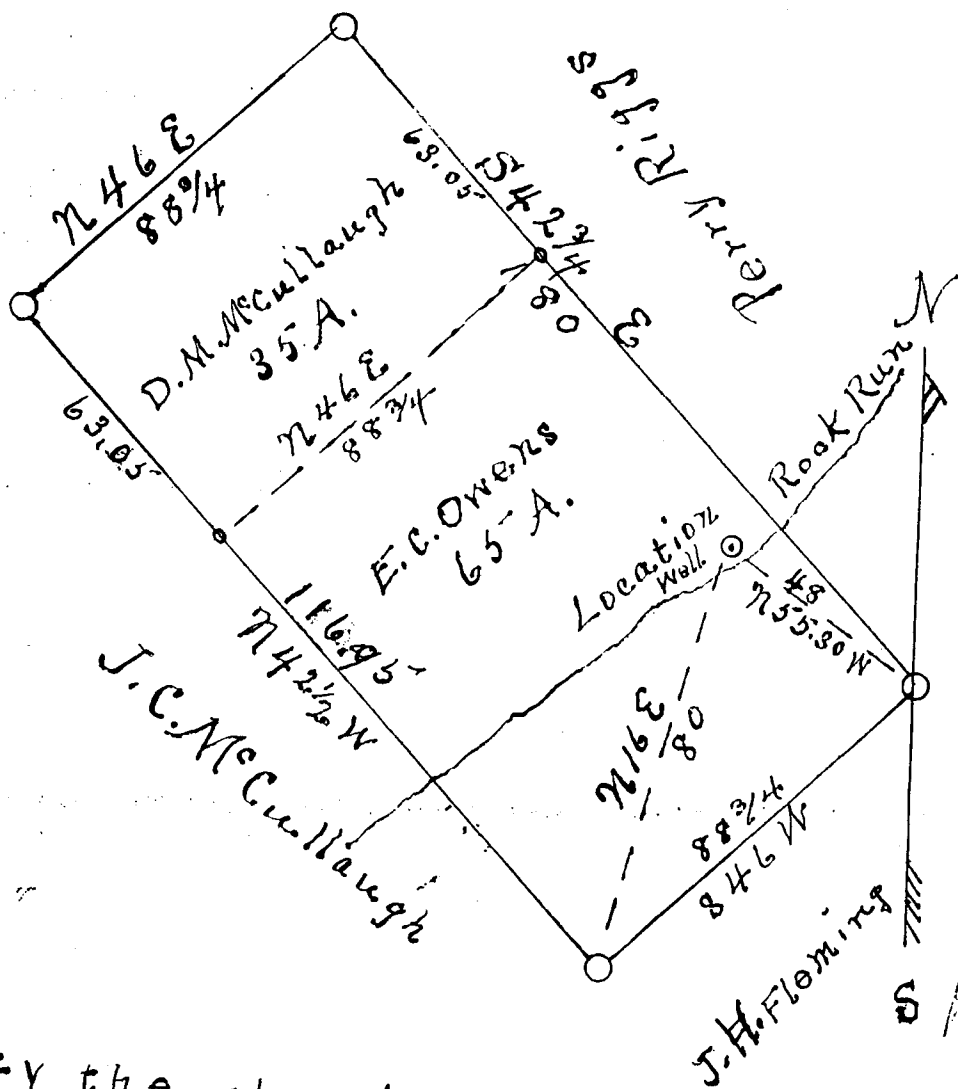
County PLEASANTS

District LAFAYETTE

WELL LOCATION MAP

File No. 073-0012

Location Well on E.C. Owens farm Rock Run
 Lafayette Dist. Pleasants Co. W. Va. for the
 Owens Farm oil & Gas Company. Oct 19. 1933,



I certify the above is a correct map and location of
 well on the E.C. Owens farm situated on Rock Run Lafayette
 District Pleasants Co. W. Va. Oct. 19 - 1933

T. J. Hicckel, Eng.

Acknowledged before me a Notary Public Pleasants
 Co. W. Va. this the 19 day October 1933

Commission Expires July 5 - 1939.

H. E. Seckman
 Notary Public,



STATE OF WEST VIRGINIA
DEPARTMENT OF MINES
OIL AND GAS DIVISION

WELL RECORD

Permit No. PLEAS-12

Oil or Gas Well Oil-Gas
(KIND)

Company St. Marys Pipe & Supply Co.
Address Box 179, St. Marys, W. Va.
Farm Eli & Cora Owens Acres 65
Location (waters) Rock Run
Well No. 1 Elev. 795'
District Lafayette County Pleasants
The surface of tract is owned in fee by Eli & Cora Owens
Address Hebron, W. Va.
Mineral rights are owned by Same parties
Address _____

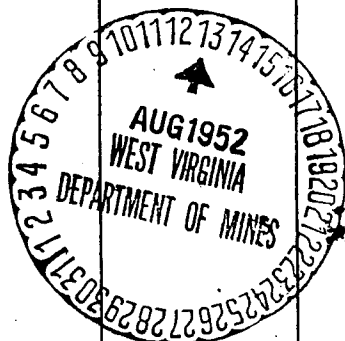
Drilling commenced 1935
Drilling completed 1935
Date Shot 1935 From Non record
With No record
Open Flow /10ths Water in No record Inch
/10ths Merc. in No record Inch
Volume No record Cu. Ft.
Rock Pressure No record lbs. hrs.
Oil 2 bbls., 1st 24 hrs.
Fresh water none feet feet
Salt water none feet feet

Casing and Tubing	Used in Drilling	Left in Well	Packers
Size			
16			Kind of Packer
13			
10			Size of
8 1/4	<u>125'</u>	<u>125'</u>	
6 1/4	1000	1000	Depth set
5 3/16	<u>1700</u>	<u>1700</u>	
3			Perf. top
2		<u>1850'</u>	Perf. bottom
Liners Used			Perf. top
			Perf. bottom

CASING CEMENTED No SIZE No. Ft. Date

COAL WAS ENCOUNTERED AT _____ FEET INCHES
No FEET INCHES FEET INCHES
FEET INCHES FEET INCHES

Formation	Color	Hard or Soft	Top	Bottom	Oil, Gas or Water	Depth Found	Remarks
Big Lime		hard	1675'	1725'			
Kenner		hard	1725	1747'	Oil	1725-36	about 2
Injun		hard	1747'	1875'	Gas	1800 show	Bbs.



OWENS, ELI & CO. RA, NO. L.

Pleas-12.

By St. Marys Pipe & Supply Co. (Abandoned by).

Lafayette Dist.

2

Completed 1935. Gas and oil well.

T. D. 1875'. Plugged 8-29-52.

Name and data from 1952 D. M. Report.