

39° 22' 30"

LATITUDE



00, 00, 18 LONGITUDE

7.5 OGIS topo location

7.5' loc 0.035 15' loc \_\_\_\_\_  
0.71W (calc.) \_\_\_\_\_

Company \_\_\_\_\_

Farm \_\_\_\_\_

Quad ELLENBORO 7 1/2'

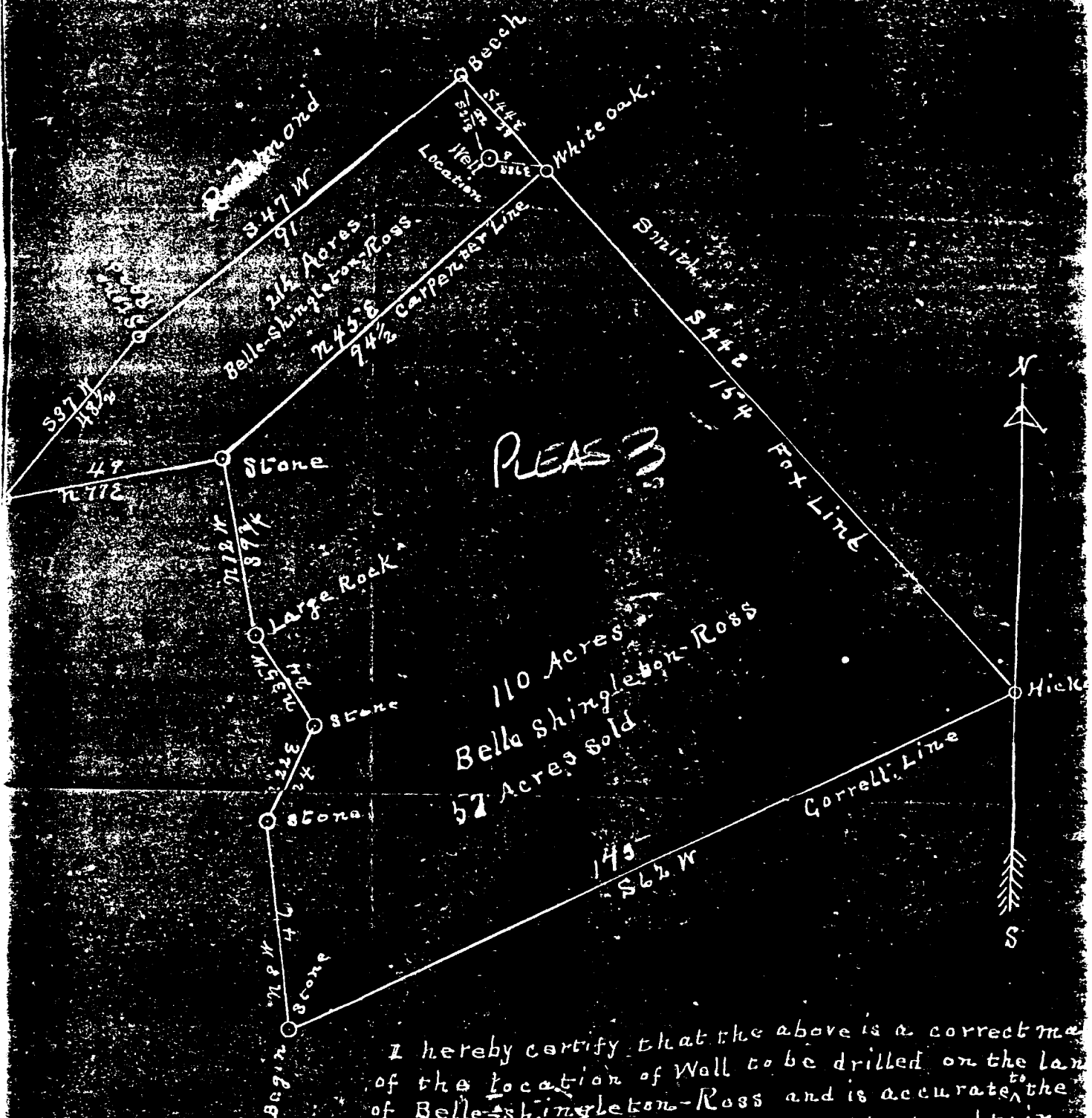
County PLEASANTS

District LAFAYETTE

WELL LOCATION MAP

File No. 073-0003

Map of Well Location Belle Ross land situated in  
Lafayette District Pleasants County West Virginia



I hereby certify that the above is a correct map  
of the location of well to be drilled on the land  
of Belle Shingleton-Ross and is accurate to the  
best of information we were able to obtain  
this the 7 day of Oct. 1931

T. J. Hickel Engineer

Acknowledged before me a Notary Public  
on this the 2 day of Oct. 1931

My commission expires  
June 11, 1933

*A. D. Harrison*  
Notary Public

Plus 3

WEST VIRGINIA DEPARTMENT OF MINES

Oil and Gas Section

PRELIMINARY DATA SHEET NO. 1

File No. \_\_\_\_\_ Well No. 1

Powell Ward & Sons Company, of St. Marys W. Va

Parberry W. Va on the St. & P. R. Hightower Pass Farm

containing Twenty Four acres. Location Mountain

Sulphat District, in Putnam's County, West Virginia.

The surface of the above tract is owned in fee by St. & P. R. Hightower Pass

of Friendly W. Va address, and the mineral rights are owned by

St. & P. R. Hightower Pass of Friendly W. Va

The oil and gas privileges are held under lease by the above named company, and this well is drilled under permit No. 3

issued by the West Virginia Department of Mines, Oil and Gas Section, St. & P. R. Hightower Pass 1921

Elevation of surface at top of well, 700 Spirit Barometric.

The number of feet of the different sized casings used in the well.

13 feet 13 size. Wood conductor

105 feet 6 size, csg. \_\_\_\_\_ feet \_\_\_\_\_ sized csg.

80 feet 4 size, csg. \_\_\_\_\_ feet \_\_\_\_\_ sized csg.

\_\_\_\_\_ feet \_\_\_\_\_ size, csg. \_\_\_\_\_ feet \_\_\_\_\_ sized csg.

set on shoulder packer of \_\_\_\_\_ size, set at \_\_\_\_\_

\_\_\_\_\_ packer of \_\_\_\_\_ size, set at \_\_\_\_\_

\_\_\_\_\_ in casing perforated at \_\_\_\_\_ feet to \_\_\_\_\_ feet.

\_\_\_\_\_ in casing perforated at \_\_\_\_\_ feet to \_\_\_\_\_ feet.

Coal was encountered at 75 feet; thickness 2 inches, and at \_\_\_\_\_

feet; thickness \_\_\_\_\_ inches; and at \_\_\_\_\_ feet; thickness \_\_\_\_\_ inches.

Liners were used as follows: (Give details) None

\_\_\_\_\_

\_\_\_\_\_

\_\_\_\_\_

\_\_\_\_\_

Date. \_\_\_\_\_

Approved Powell Ward & Sons, Owner.

By F. F. Jewell (Title)

OK  
2/11/21



ROSS, BELLE SHINGLETON, NO. 1.

Pleas-3.

By G. I. Powell.

Lafayette Dist.