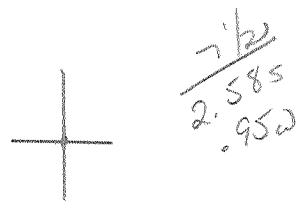


LATITUDE 38°47'30"

79025'

LONGITUDE



Description of well as on p. 27 of the 1923 Tucker Co. Rept.

Location determined from Map II of '27 Rept.

7'5 OGIS topo location

on Map II of 1927 Co. Rept as dry hole in N of Riverton.

7.5' loc _____ 15' loc _____
 _____ (calc.) _____

Company John A. Nelson

Farm Clara Harper 1 (Riverton)

Quad Oregon 7 1/2

County Perthshire

District Union

WELL LOCATION MAP

File No. 071-70001-80001

071-18

Was "A"

..... District, Pendleton County, W. Va. on Map II of 1927
Co. Rep. as a dry hole
Name of location
 Authority, John A. Nelson, Riverton, W. Va., Sept. 3, 1918.
 Elevation.....

	Top.	Bottom.
Black lime		(13)
1 3/4" Pipe		(38)
Coal (?) Marcellus	170	- 178
Slate	200	- 220
Gray sand Oriskany	220	- 235
Slate and shells, black	235	- 250
Blue lime	250	- 325
Slate and shells	325	- 650
Blue lime	650	- 790
Sand, gray	790	- 815
Slate and shells	815	- 1150
Slate and shells	1150	- 1190
Coarse sand	1190	- 1200
Slate and shells	1200	- 1290
Coarse sand	1290	- 1300
Slate and shells	1300	- 1507
Gray sand	1507	- 1517
Slate and shells	1517	- 1700
In Black Sand now ("We are now about 1800 feet")		(1800 - 1850)

see p. 272 of Sucker Co. Report

Mrs. Clara Harper No. 1 Well.

..... District, Pendleton County, W. Va.
 North Fork Oil & Gas Company.
 on map. (Outside map border).
 location, 1870' B.
 hole.
 located 5.53 mi. S. of 38° 50' and 1.06 mi. W. of 79° 25'—SW—Onego
 quadrangle.
 west side of North Fork of South Branch of Potomac River.
 0.75 mi. N. of Riverton; 1.1 mi. S. E. of Malloy School.

Pend 1?
se
Pend-A

	Top.	Bottom.	Thickness.	Elevation (top)
✓ Liferous Lime.....	178	200	22	+1692
Oriskany Sand	220	235	15	+1650

Remarks: Well was shut down July 1, 1919. Total depth, 1850'?
 Dip 70°± westward. Starts in Marcellus Black Shale.
 Stratigraphic depth, 481'±.
 Oriskany Sand crops 400' east of well and Clinton 1/4 mi. farther east.
 Sands reported at 790-815', 1190-1200', 1290-1300', 1507-1517', and 1800-1850'.

(500?)

PENDLETON COUNTY WELL RECORDS.

Pendleton County Permit and Map Numbers.

Pend-No. Farm Name and Well No. Company. District.
 A Harper, Mrs. Clara, No. 1 North Fork Oil & Gas Union

And A

Mrs. Clara Harper No. 1 Well.

Union District, Pendleton County, W. Va.
 By North Fork Oil & Gas Company.

Pend-A on map. (Outside map border).
 Elevation, 1870' B.

Dry hole.

Located 5.53 mi. S. of 38° 50' and 1.06 mi. W. of 79° 25'—SW—Onego
 Quadrangle.

On west side of North Fork of South Branch of Potomac River.
 0.75 mi. N. of Riverton; 1.1 mi. S. E. of Mallon School.

	Top.	Bottom.	Thickness.	Elevation (top)
Corniferous Lime-----	178	200	22	+1692
Oriskany Sand -----	220	235	15	+1650

Remarks: Well was shut down July 1, 1919. Total depth, 1850'?
 Dip 70°± westward. Starts in Marcellus Black Shale.
 Stratigraphic depth, 481'±.
 Oriskany Sand crops 400' east of well and Clinton ¼ mi. farther
 east.
 Sands reported at 790-815', 1190-1200', 1290-1300', 1507-1517',
 and 1800-1850'.