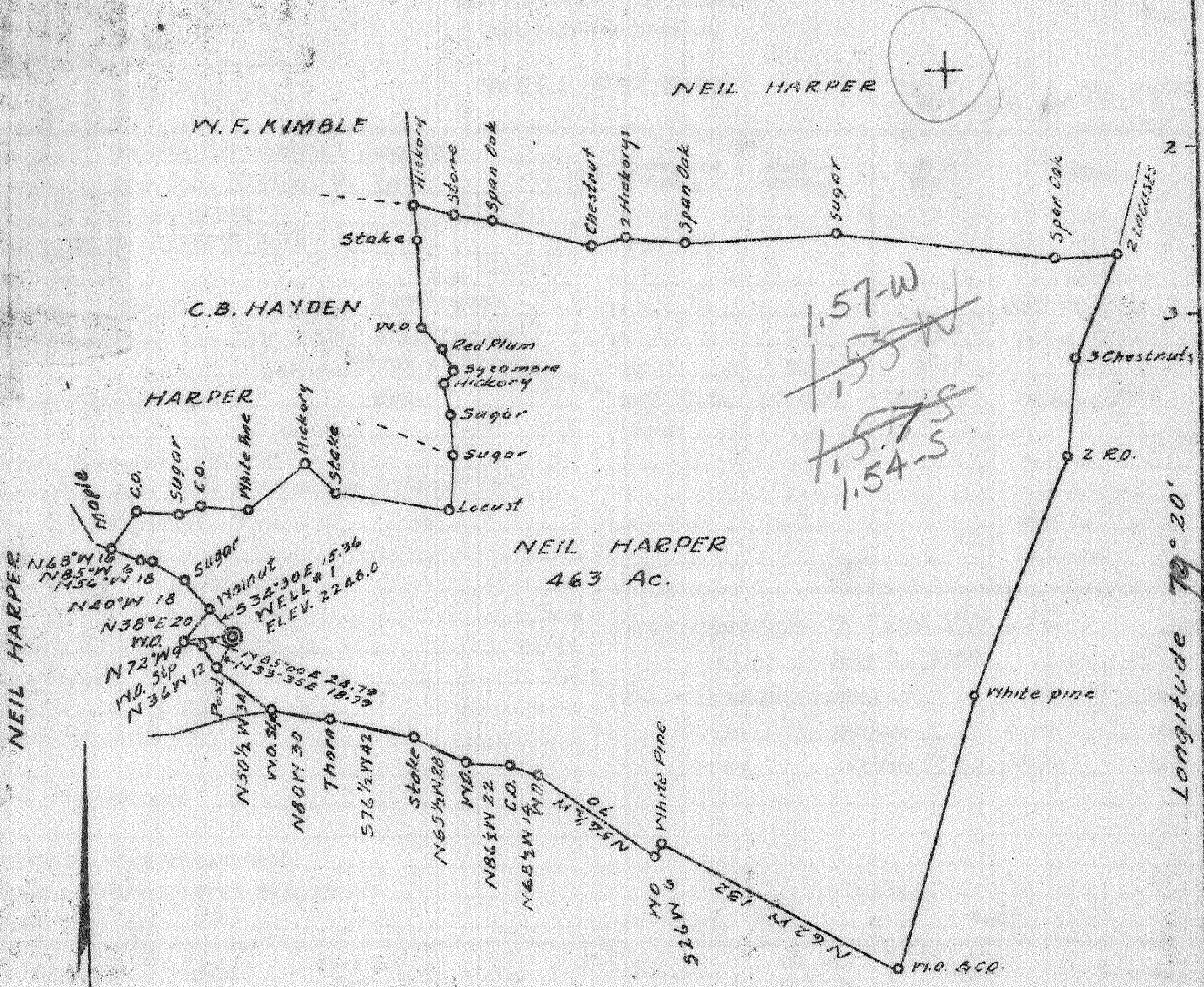


Latitude 38° 50' 3 2 1

Longitude 79° 20'



- New Location
- Drill Deeper...
- Abandonment...

| | |
|----------------------------|--|
| Company | SENECA GAS & OIL COMPANY |
| Address | 52 EAST MAIN STREET, UNIONTOWN, PENNA. |
| Farm | NEIL HARPER |
| Tract | Acres 463 Lease No. 1 |
| Well (Farm) No | 1 Serial No. 1 |
| Elevation (Spirit Level) | 2248.3 |
| Quadrangle | ONEGO - 8 - 5 C Upper tract |
| County | PENDLETON District UNION |
| Engineer | DW Carpenter |
| Engineer's Registration No | 765 |
| File No. | A-12451 Drawing No. |
| Date | 12-4-51 Scale 1" = 80 Poles |

STATE OF WEST VIRGINIA
DEPARTMENT OF MINES
OIL AND GAS DIVISION
CHARLESTON

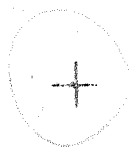
WELL LOCATION MAP

FILE NO. PEND-1

- Denotes location of well on United States Topographic Maps, scale 1 to 62,500, latitude and longitude lines being represented by border lines as shown.
- Denotes one inch spaces on border line of original tracing.

Latitude 38° 50' 3 2 1

NEIL HARPER



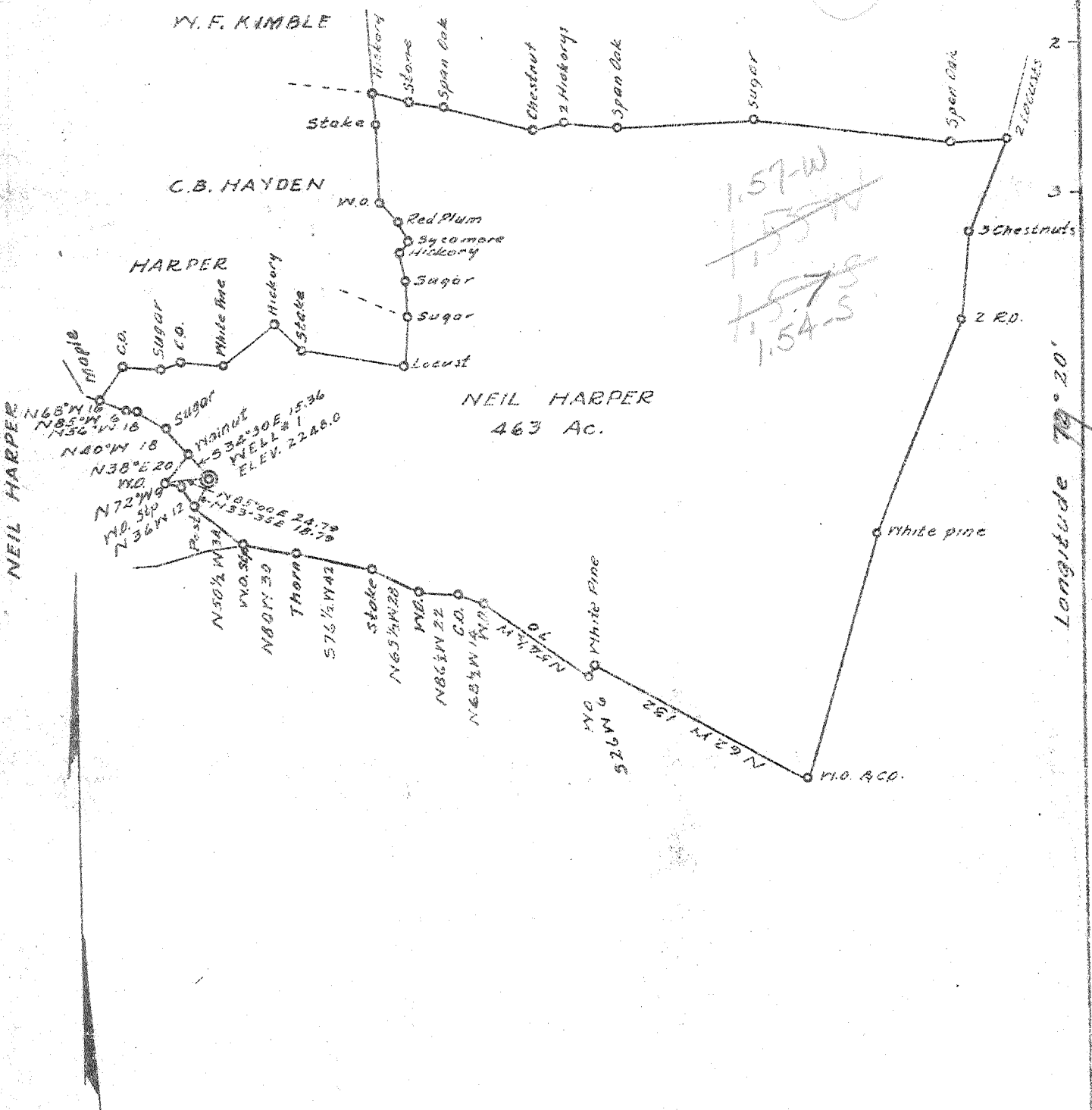
W. F. KIMBLE

C. B. HAYDEN

HARPER

NEIL HARPER
463 Ac.

Longitude 79° 20'



- New Location
- Drill Deeper
- Abandonment

Company SENECA GAS & OIL COMPANY
 Address 52 EAST MAIN STREET, UNIONTOWN, PENNA.
 Farm NEIL HARPER
 Tract Acres 463 Lease No. 1
 Well (Farm) No 1 Serial No. 1
 Elevation (Spirit Level) 2248.3
 Quadrangle ONEGO - 8
 County PENDLETON District UNION
 Engineer D. W. Carpenter
 Engineer's Registration No 765
 File No. A-12451 Drawing No.
 Date 12-4-51 Scale 1" = 80 Poles

STATE OF WEST VIRGINIA
 DEPARTMENT OF MINES
 OIL AND GAS DIVISION
 CHARLESTON

WELL LOCATION MAP
 FILE NO. PEND-1

- Denotes location of well on United States Topographic Maps, scale 1 to 62,500, latitude and longitude lines being represented by border lines as shown.
- Denotes one inch spaces on border line of original tracing.



STATE OF WEST VIRGINIA
DEPARTMENT OF MINES
OIL AND GAS DIVISION

Quadrangle ONEGO

Permit No. PENDLETON NO.1

WELL RECORD

Oil or Gas Well GAS TEST
(KIND)

Company Seneca Gas and Oil Company
Address Box 746, Elkins, W. Va.
Farm Neil Harper Acres 463
Location (waters) North Fork
Well No. 1 Elev. 2248'
District Union County Pendleton
The surface of tract is owned in fee by Neil Harper
Address Mouth of Seneca,
W.Va.
Mineral rights are owned by Same
Address _____
Drilling commenced February 1952
Drilling completed Shut down since October 1952
Date Shot Not shot From _____ To _____
With _____
Open Flow _____ /10ths Water in _____ Inch
_____ /10ths Merc. in _____ Inch
Volume No gas _____ Cu. Ft.
Rock Pressure _____ lbs. _____ hrs.
Oil _____ bbls., 1st 24 hrs.
WELL ACIDIZED _____
WELL FRACTURED _____

| Casing and Tubing | Used in Drilling | Left in Well | Packers |
|--------------------|------------------|--------------|-----------------------|
| Size | | | Kind of Packer |
| 16 | | | Bottom Hole |
| 13 | | | Size of <u>8-5/8"</u> |
| 10 | <u>150'</u> | <u>150'</u> | Depth set <u>687</u> |
| 8 1/4 | <u>687'</u> | <u>687'</u> | |
| <u>8 1/4" O.D.</u> | <u>2400'</u> | <u>2400'</u> | |
| 5 3/16 | | | |
| 3 | | | Perf. top _____ |
| 2 | | | Perf. bottom _____ |
| Liners Used | | | Perf. top _____ |
| | | | Perf. bottom _____ |

CASING CEMENTED 7" SIZE 150' No. Ft. _____ Date July 1, 1952

COAL WAS ENCOUNTERED AT _____ FEET _____ INCHES
_____ FEET _____ INCHES
_____ FEET _____ INCHES

RESULT AFTER TREATMENT

ROCK PRESSURE AFTER TREATMENT

Fresh Water 360 Feet Salt Water 515 Feet

| Formation | Color | Hard or Soft | Top | Bottom | Oil, Gas or Water | Depth | Remarks |
|----------------------------|--------|--------------|------|------------|-------------------------------|-------------|---------------------------|
| Boulders and clay | | | 0 | 7 | | | |
| Lime | dark | hard | 7 | 106 | Trenton lime | 0 - 75 | <u>mantle-shaly shale</u> |
| Lime | white | hard | 106 | 150 | | 75 - 1710 | <u>Trenton group</u> |
| Lime | dark | hard | 150 | 165 | Black River lime | | |
| Lime | gray | hard | 165 | 205 | Water | 360' | <u>1 bailer per hr.</u> |
| Lime | dark | very hard | 205 | 360 | | 1710 - T.D. | <u>Black River</u> |
| Lime | gray | hard | 360 | 600 | Stones River lime | | <u>2248</u> |
| Lime | dark | hard | 600 | 715 | Beekmantown lime | | <u>820</u> |
| Lime | gray | hard | 715 | 820 | | | |
| Lime | dark | hard | 820 | 1160 | | | |
| Lime | gritty | hard | 1160 | 1275 | | | |
| Lime | dark | very hard | 1275 | 2695 | (Broke 3 bits and 5 stems) | | <u>1428</u> |
| Lime | gritty | hard | 2695 | 2731 | (Cambrio-Ordovision) | | |
| Lime | dark | hard | 2731 | 3000 | (Ozarkian of Ellenburger Age) | | |
| Total Depth | | | | 3000 | | | |
| Shut down October 22, 1952 | | | | <u>700</u> | | | <u>785' - fault</u> |
| | | | | | | | <u>1710' - fault</u> |

