



SWN PRODUCTION COMPANY, LLC



Location: Ohio County, WV

Slot: 210H

Field: Ohio

Well: William Rodgers OHI 210H

Facility: William Rodgers OHI Pad

Wellbore: William Rodgers OHI 210H AWB

Plot reference wellpath is William Rodgers OHI 210H awp Proj: 20998'

Grid System: NAD83 / UTM Zone 17 North, US feet

True vertical depths are referenced to SDC 41 (KB)

North Reference: Grid north

Reference wellpath measured depths are referenced to SDC 41 (KB)

Scale: True distance

SDC 41 (KB) to Mean Sea Level: 1305.4 feet

Coordinates are in feet referenced to Slot

Mean Sea Level to Ground level (At Slot: 210H): -1279.4 feet

Depths are in feet

Offset wellpath MDs are referenced to each path's default MD datum

Created by: tranlam on 2024-05-21; Database: WA_MPL_EASTERNUS_Defn

Location Information

Facility Name			Grid East (US ft)	Grid North (US ft)	Latitude	Longitude
William Rodgers OHI Pad			1771224.598	14566030.368	40°06'25.0960"N	80°31'55.8620"W
Slot	Local N (ft)	Local E (ft)	Grid East (US ft)	Grid North (US ft)	Latitude	Longitude
210H	-29.09	-17.71	1771206.890	14566001.290	40°06'24.8095"N	80°31'56.0919"W
SDC 41 (KB) to Ground level (At Slot: 210H)					26ft	
Mean Sea Level to Ground level (At Slot: 210H)					-1279.4ft	
SDC 41 (KB) to Mean Sea Level					1305.4ft	

Bottom Hole Location

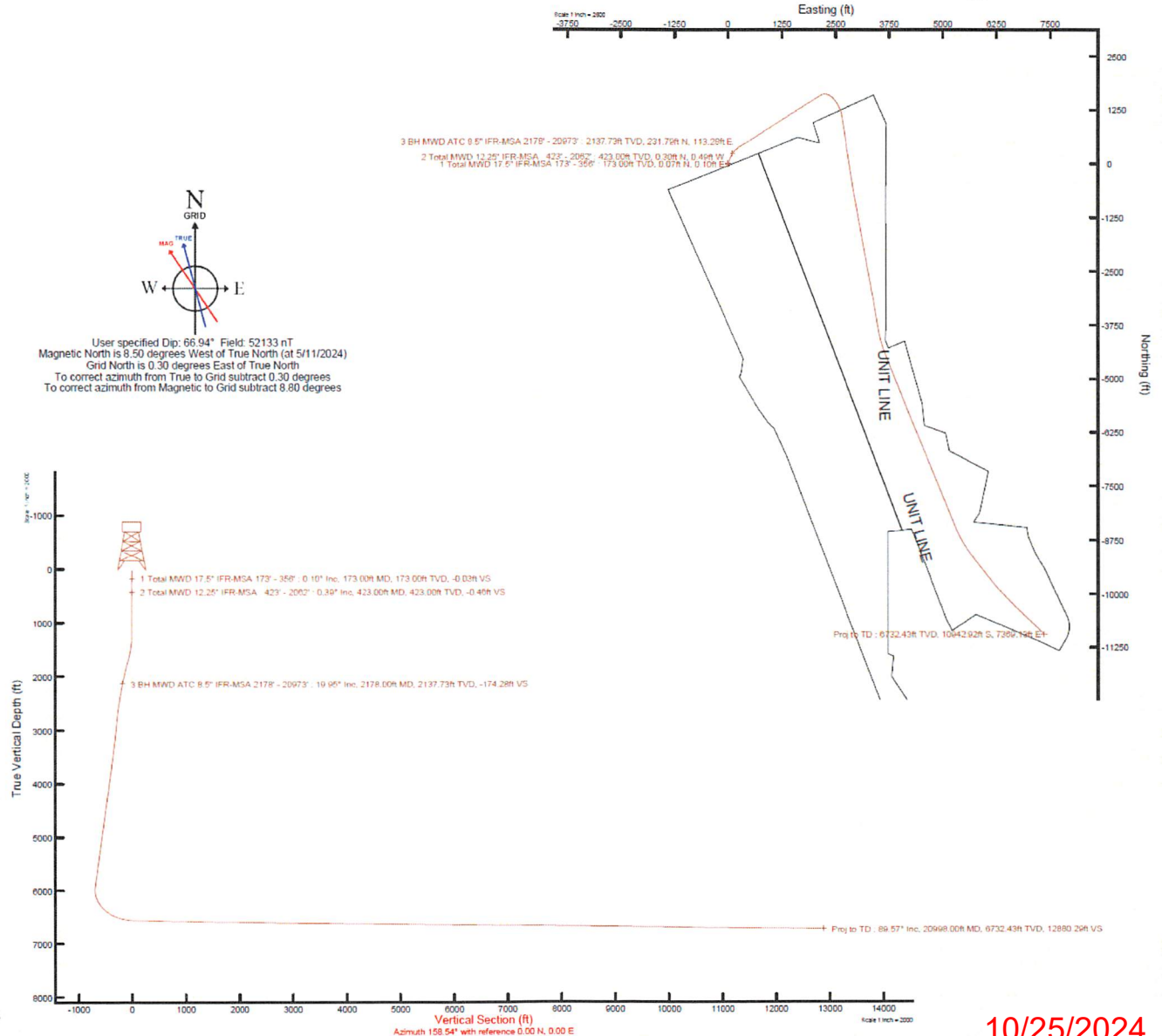
MD (ft)	Inc (°)	Az (°)	TVD (ft)	Local N (ft)	Local E (ft)	Grid East (US ft)	Grid North (US ft)	Latitude	Longitude
20998.00	89.570	133.540	6732.43	-10942.92	7369.13	1778573.20	14555062.56	40°04'36.2779"N	80°30'22.0367"W

API: 47069003670000
 BH JOB: 112207473
 DURATION: 05.15.2024 to 05.20.2024
 RIG: SDC 41

RECEIVED
 Office Of Oil and Gas

MAY 05 2024

WV Department of
 Environmental Protection



10/25/2024



Actual Wellpath Report

Office Of Oil and Gas
 William Rodgers OHI 210H awp Proj: 20998'
 Page 1 of 10

RECEIVED
 SEP 05 2024
 WV Department of
 Environmental Protection



REFERENCE WELLPATH IDENTIFICATION			
Operator	SWN PRODUCTION COMPANY, LLC	Well	William Rodgers OHI 210H
Field	Ohio	API	47069003670000
Facility	William Rodgers OHI Pad	Wellbore	William Rodgers OHI 210H AWB
Slot	210H		

REPORT SETUP INFORMATION			
Projection System	NAD83 / UTM Zone 17 North, US feet	Software System	WellArchitect® 6.0
North Reference	Grid	User	Tranlam
Scale	0.999620	Report Generated	5/21/2024 at 11:54:50 AM
Convergence at slot	0.30° East	Database	WA_MPL_EASTERNUS_Defn

WELLPATH LOCATION						
	Local coordinates		Grid coordinates		Geographic coordinates	
	North[ft]	East[ft]	Easting[US ft]	Northing[US ft]	Latitude	Longitude
Slot Location	-29.09	-17.71	1771206.89	14566001.29	40°06'24.8095"N	80°31'56.0919"W
Facility Reference Pt			1771224.60	14566030.37	40°06'25.0960"N	80°31'55.8620"W
Field Reference Pt			0.00	0.00	0°00'0.0000"	85°29'19.4780"W

WELLPATH DATUM			
Calculation method	Minimum curvature	SDC 41 (KB) to Facility Vertical Datum	1305.40ft
Horizontal Reference Pt	Slot	SDC 41 (KB) to Mean Sea Level	1305.40ft
Vertical Reference Pt	SDC 41 (KB)	SDC 41 (KB) to Ground Level at Slot (210H)	26.00ft
MD Reference Pt	SDC 41 (KB)	Section Origin	N 0.00, E 0.00 ft
Field Vertical Reference	Mean Sea Level	Section Azimuth	158.54°



Actual Wellpath Report

William Rodgers OHI 210H awp Proj: 20998'

RECEIVED
Office Of Oil and Gas

SEP 05 2024

WV Department of
Environmental Protection



REFERENCE WELLPATH IDENTIFICATION			
Operator	SWN PRODUCTION COMPANY, LLC	Well	William Rodgers OHI 210H
Field	Ohio	API	47069003670000
Facility	William Rodgers OHI Pad	Wellbore	William Rodgers OHI 210H AWB
Slot	210H		

WELLPATH DATA (224 stations) † = interpolated, ‡ = extrapolated station

MD [ft]	Inclination [°]	Azimuth [°]	TVD [ft]	Vert Sect [ft]	North [ft]	East [ft]	Grid East [US ft]	Grid North [US ft]	Latitude	Longitude	Closure Dist [ft]	Closure Dir [°]	DLS [°/100ft]
0.00†	0.000	54.650	0.00	0.00	0.00	0.00	1771206.89	14566001.29	40°06'24.8095"N	80°31'56.0919"W	0.00	0.000	0.00
26.00	0.000	54.650	26.00	0.00	0.00	0.00	1771206.89	14566001.29	40°06'24.8095"N	80°31'56.0919"W	0.00	0.000	0.00
173.00	0.100	54.650	173.00	-0.03	0.07	0.10	1771206.99	14566001.36	40°06'24.8102"N	80°31'56.0906"W	0.13	54.650	0.07
235.00	0.160	270.640	235.00	-0.08	0.11	0.06	1771206.95	14566001.40	40°06'24.8105"N	80°31'56.0911"W	0.12	30.288	0.40
327.00	0.240	246.080	327.00	-0.12	0.03	-0.24	1771206.65	14566001.32	40°06'24.8098"N	80°31'56.0951"W	0.24	277.009	0.13
356.00	0.200	293.440	356.00	-0.15	0.03	-0.34	1771206.55	14566001.32	40°06'24.8097"N	80°31'56.0964"W	0.35	274.203	0.62
423.00	0.390	349.160	423.00	-0.46	0.30	-0.49	1771206.40	14566001.59	40°06'24.8124"N	80°31'56.0983"W	0.58	300.885	0.48
515.00	0.240	291.590	515.00	-0.90	0.67	-0.73	1771206.16	14566001.96	40°06'24.8162"N	80°31'56.1013"W	1.00	312.624	0.36
605.00	0.360	21.050	605.00	-1.23	1.01	-0.81	1771206.08	14566002.30	40°06'24.8195"N	80°31'56.1023"W	1.29	321.329	0.48
697.00	0.540	12.540	696.99	-1.81	1.70	-0.61	1771206.28	14566002.99	40°06'24.8263"N	80°31'56.0997"W	1.81	340.314	0.21
788.00	0.860	340.450	787.99	-2.84	2.76	-0.74	1771206.15	14566004.05	40°06'24.8368"N	80°31'56.1013"W	2.86	344.931	0.54
878.00	0.480	343.060	877.98	-3.89	3.76	-1.08	1771205.81	14566005.05	40°06'24.8467"N	80°31'56.1056"W	3.91	343.978	0.42
970.00	0.710	109.850	969.98	-3.90	3.93	-0.66	1771206.23	14566005.22	40°06'24.8484"N	80°31'56.1001"W	3.99	350.538	1.16
1062.00	1.380	144.790	1061.96	-2.45	2.84	0.52	1771207.41	14566004.12	40°06'24.8375"N	80°31'56.0851"W	2.88	10.374	0.97
1153.00	1.680	96.990	1152.93	-0.75	1.78	2.48	1771209.36	14566003.07	40°06'24.8269"N	80°31'56.0600"W	3.05	54.303	1.40
1244.00	3.160	51.710	1243.86	-0.84	3.17	5.77	1771212.66	14566004.46	40°06'24.8405"N	80°31'56.0175"W	6.58	61.206	2.54
1335.00	5.960	30.770	1334.57	-4.46	8.79	10.15	1771217.04	14566010.07	40°06'24.8958"N	80°31'55.9607"W	13.43	49.136	3.53
1426.00	9.010	25.000	1424.78	-12.27	19.31	15.58	1771222.47	14566020.59	40°06'24.9994"N	80°31'55.8901"W	24.81	38.913	3.45
1517.00	12.380	21.530	1514.19	-24.31	34.84	22.18	1771229.06	14566036.12	40°06'25.1526"N	80°31'55.8042"W	41.30	32.478	3.77
1607.00	15.840	19.420	1601.46	-40.66	55.41	29.80	1771236.68	14566056.68	40°06'25.3555"N	80°31'55.7046"W	62.92	28.277	3.89
1698.00	19.510	19.180	1688.15	-61.59	81.48	38.93	1771245.80	14566082.74	40°06'25.6126"N	80°31'55.5854"W	90.30	25.537	4.03
1788.00	22.480	20.960	1772.17	-85.70	111.75	50.02	1771256.90	14566113.00	40°06'25.9112"N	80°31'55.4406"W	122.44	24.116	3.37
1879.00	20.920	29.670	1856.74	-108.75	142.12	64.29	1771271.16	14566143.36	40°06'26.2106"N	80°31'55.2549"W	155.99	24.341	3.93
1970.00	19.290	29.850	1942.19	-128.34	169.28	79.82	1771286.68	14566170.50	40°06'26.4781"N	80°31'55.0532"W	187.15	25.245	1.79
2062.00	20.210	28.150	2028.78	-148.14	196.47	94.88	1771301.73	14566197.69	40°06'26.7461"N	80°31'54.8576"W	218.18	25.777	1.18
2178.00	19.950	26.880	2137.73	-174.28	231.79	113.28	1771320.13	14566232.99	40°06'27.0941"N	80°31'54.6184"W	257.99	26.046	0.44
2270.00	20.800	31.450	2223.98	-194.56	259.73	128.90	1771335.74	14566260.92	40°06'27.3694"N	80°31'54.4155"W	289.95	26.395	1.96
2360.00	21.520	40.510	2307.93	-211.96	285.92	147.97	1771354.80	14566287.10	40°06'27.6272"N	80°31'54.1683"W	321.93	27.362	3.72
2452.00	23.100	46.060	2393.05	-226.79	311.27	171.93	1771378.75	14566312.44	40°06'27.8765"N	80°31'53.8582"W	355.60	28.914	2.86
2543.00	24.180	50.620	2476.42	-239.35	335.49	199.19	1771406.00	14566336.65	40°06'28.1144"N	80°31'53.5057"W	390.16	30.699	2.33

SEP 05 2024



Actual Wellpath Report

William Rodgers OHI 210H awp Proj: 20998'
Page 3 of 10

WV Department of
Environmental Protection



REFERENCE WELLPATH IDENTIFICATION			
Operator	SWN PRODUCTION COMPANY, LLC	Well	William Rodgers OHI 210H
Field	Ohio	API	47069003670000
Facility	William Rodgers OHI Pad	Wellbore	William Rodgers OHI 210H AWB
Slot	210H		

WELLPATH DATA (224 stations)													
MD [ft]	Inclination [°]	Azimuth [°]	TVD [ft]	Vert Sect [ft]	North [ft]	East [ft]	Grid East [US ft]	Grid North [US ft]	Latitude	Longitude	Closure Dist [ft]	Closure Dir [°]	DLS [°/100ft]
2635.00	26.300	49.780	2559.63	-251.71	360.60	229.32	1771436.12	14566361.76	40°06'28.3610"N	80°31'53.1162"W	427.34	32.454	2.34
2726.00	28.410	53.870	2640.46	-263.68	386.39	262.20	1771468.99	14566387.53	40°06'28.6141"N	80°31'52.6913"W	466.96	34.161	3.10
2817.00	30.530	56.970	2719.68	-273.80	411.76	299.07	1771505.85	14566412.89	40°06'28.8629"N	80°31'52.2151"W	508.91	35.992	2.87
2908.00	32.280	59.870	2797.35	-282.10	436.56	339.47	1771546.23	14566437.68	40°06'29.1059"N	80°31'51.6934"W	553.02	37.869	2.54
3090.00	32.290	60.120	2951.22	-296.54	485.17	423.66	1771630.39	14566486.28	40°06'29.5819"N	80°31'50.6067"W	644.11	41.128	0.07
3181.00	32.390	60.040	3028.10	-303.70	509.45	465.85	1771672.56	14566510.55	40°06'29.8196"N	80°31'50.0621"W	690.33	42.440	0.12
3273.00	32.310	60.420	3105.82	-310.82	533.90	508.58	1771715.28	14566534.98	40°06'30.0589"N	80°31'49.5105"W	737.36	43.609	0.24
3363.00	32.340	57.170	3181.88	-318.96	558.82	549.73	1771756.41	14566559.90	40°06'30.3031"N	80°31'48.9792"W	783.89	44.530	1.93
3454.00	32.300	57.020	3258.78	-328.62	585.25	590.58	1771797.24	14566586.32	40°06'30.5622"N	80°31'48.4517"W	831.44	45.259	0.10
3544.00	32.310	57.000	3334.85	-338.23	611.44	630.92	1771837.57	14566612.50	40°06'30.8189"N	80°31'47.9307"W	878.59	45.898	0.02
3635.00	32.460	57.090	3411.70	-347.94	637.95	671.82	1771878.45	14566639.00	40°06'31.0787"N	80°31'47.4026"W	926.46	46.481	0.17
3725.00	32.400	57.070	3487.66	-357.53	664.18	712.33	1771918.95	14566665.22	40°06'31.3358"N	80°31'46.8794"W	973.94	47.003	0.07
3816.00	32.480	57.000	3564.46	-367.27	690.75	753.29	1771959.89	14566691.77	40°06'31.5961"N	80°31'46.3505"W	1022.04	47.480	0.10
3906.00	32.430	57.240	3640.41	-376.83	716.97	793.85	1772000.43	14566717.98	40°06'31.8531"N	80°31'45.8267"W	1069.69	47.913	0.15
3997.00	32.440	57.170	3717.21	-386.42	743.40	834.88	1772041.45	14566744.41	40°06'32.1122"N	80°31'45.2968"W	1117.88	48.317	0.04
4088.00	33.870	57.270	3793.39	-396.19	770.35	876.72	1772083.27	14566771.34	40°06'32.3763"N	80°31'44.7565"W	1167.08	48.695	1.57
4179.00	35.240	57.300	3868.34	-406.26	798.24	920.14	1772126.68	14566799.22	40°06'32.6497"N	80°31'44.1957"W	1218.13	49.058	1.51
4270.00	34.590	56.900	3942.96	-416.59	826.53	963.88	1772170.40	14566827.50	40°06'32.9269"N	80°31'43.6309"W	1269.73	49.387	0.76
4363.00	34.450	57.300	4019.58	-427.05	855.16	1008.13	1772214.63	14566856.12	40°06'33.2075"N	80°31'43.0595"W	1321.97	49.693	0.29
4453.00	35.220	57.330	4093.45	-437.05	882.92	1051.39	1772257.88	14566883.87	40°06'33.4796"N	80°31'42.5007"W	1372.94	49.978	0.86
4544.00	35.260	57.250	4167.78	-447.30	911.29	1095.57	1772302.05	14566912.23	40°06'33.7577"N	80°31'41.9302"W	1425.04	50.247	0.07
4635.00	35.080	57.260	4242.17	-457.56	939.64	1139.66	1772346.12	14566940.58	40°06'34.0355"N	80°31'41.3609"W	1477.08	50.495	0.20
4726.00	35.060	57.200	4316.64	-467.81	967.95	1183.63	1772390.06	14566968.87	40°06'34.3129"N	80°31'40.7931"W	1529.02	50.724	0.04
4817.00	35.140	57.240	4391.10	-478.08	996.28	1227.62	1772434.04	14566997.18	40°06'34.5905"N	80°31'40.2250"W	1581.02	50.939	0.09
4908.00	35.710	57.290	4465.25	-488.39	1024.80	1271.99	1772478.39	14567025.70	40°06'34.8701"N	80°31'39.6520"W	1633.45	51.143	0.63
4999.00	35.130	57.460	4539.41	-498.61	1053.23	1316.41	1772522.79	14567054.12	40°06'35.1487"N	80°31'39.0784"W	1685.89	51.337	0.65
5091.00	35.160	56.970	4614.64	-509.01	1081.91	1360.93	1772567.30	14567082.79	40°06'35.4298"N	80°31'38.5034"W	1738.58	51.516	0.31
5181.00	35.340	57.420	4688.13	-519.22	1110.05	1404.59	1772610.94	14567110.92	40°06'35.7056"N	80°31'37.9396"W	1790.28	51.681	0.35
5272.00	35.320	57.310	4762.37	-529.42	1138.43	1448.91	1772655.24	14567139.28	40°06'35.9837"N	80°31'37.3673"W	1842.65	51.843	0.07
5363.00	35.320	57.480	4836.62	-539.59	1166.78	1493.23	1772699.54	14567167.62	40°06'36.2615"N	80°31'36.7949"W	1895.02	51.997	0.11



Actual Wellpath Report

William Rodgers OHI 210H awp Proj: 20998

SEP 05 2024

Department of Environmental Protection



REFERENCE WELLPATH IDENTIFICATION			
Operator	SWN PRODUCTION COMPANY, LLC	Well	William Rodgers OHI 210H
Field	Ohio	API	47069003670000
Facility	William Rodgers OHI Pad	Wellbore	William Rodgers OHI 210H AWB
Slot	210H		

WELLPATH DATA (224 stations)

MD [ft]	Inclination [°]	Azimuth [°]	TVD [ft]	Vert Sect [ft]	North [ft]	East [ft]	Grid East [US ft]	Grid North [US ft]	Latitude	Longitude	Closure Dist [ft]	Closure Dir [°]	DLS [°/100ft]
5452.00	35.320	57.180	4909.24	-549.59	1194.55	1536.54	1772742.84	14567195.39	40°06'36.5337"N	80°31'36.2356"W	1946.26	52.137	0.19
5543.00	35.660	57.240	4983.34	-559.97	1223.17	1580.95	1772787.24	14567223.99	40°06'36.8141"N	80°31'35.6620"W	1998.89	52.271	0.38
5633.00	35.650	57.110	5056.47	-570.31	1251.60	1625.04	1772831.31	14567252.41	40°06'37.0928"N	80°31'35.0927"W	2051.16	52.397	0.08
5724.00	35.500	57.520	5130.48	-580.62	1280.19	1669.59	1772875.85	14567280.99	40°06'37.3730"N	80°31'34.5173"W	2103.91	52.520	0.31
5814.00	34.900	57.160	5204.02	-590.69	1308.19	1713.27	1772919.51	14567308.98	40°06'37.6473"N	80°31'33.9532"W	2155.61	52.636	0.71
5913.00	34.640	57.510	5285.35	-601.66	1338.66	1760.80	1772967.02	14567339.44	40°06'37.9460"N	80°31'33.3394"W	2211.88	52.756	0.33
6009.00	34.210	57.280	5364.53	-612.15	1367.90	1806.52	1773012.72	14567368.67	40°06'38.2325"N	80°31'32.7490"W	2265.98	52.867	0.47
6104.00	35.350	57.270	5442.56	-622.74	1397.20	1852.11	1773058.29	14567397.95	40°06'38.5196"N	80°31'32.1603"W	2320.01	52.970	1.20
6200.00	35.640	57.740	5520.72	-633.41	1427.14	1899.12	1773105.28	14567427.89	40°06'38.8131"N	80°31'31.5531"W	2375.58	53.076	0.41
6295.00	35.630	57.340	5597.93	-643.97	1456.85	1945.82	1773151.97	14567457.58	40°06'39.1042"N	80°31'30.9500"W	2430.77	53.178	0.25
6390.00	35.670	57.470	5675.13	-654.66	1486.68	1992.47	1773198.60	14567487.40	40°06'39.3964"N	80°31'30.3476"W	2485.99	53.272	0.09
6486.00	35.680	57.500	5753.11	-665.40	1516.77	2039.68	1773245.79	14567517.48	40°06'39.6913"N	80°31'29.7379"W	2541.83	53.364	0.02
6581.00	34.720	57.060	5830.74	-676.09	1546.37	2085.75	1773291.84	14567547.07	40°06'39.9814"N	80°31'29.1429"W	2596.46	53.447	1.05
6676.00	34.850	57.730	5908.76	-686.56	1575.57	2131.41	1773337.48	14567576.26	40°06'40.2676"N	80°31'28.5533"W	2650.53	53.528	0.42
6772.00	35.330	66.120	5987.36	-692.88	1601.47	2180.01	1773386.07	14567602.15	40°06'40.5209"N	80°31'27.9260"W	2705.02	53.698	5.05
6867.00	36.070	79.570	6064.63	-688.69	1617.68	2232.71	1773438.75	14567618.35	40°06'40.6783"N	80°31'27.2466"W	2757.15	54.075	8.29
6962.00	35.480	101.980	6142.04	-668.05	1617.01	2287.43	1773493.44	14567617.69	40°06'40.6688"N	80°31'26.5425"W	2801.26	54.743	13.75
7057.00	37.840	115.000	6218.36	-631.68	1598.95	2340.89	1773546.89	14567599.62	40°06'40.4875"N	80°31'25.8556"W	2834.86	55.665	8.54
7153.00	43.430	128.180	6291.32	-581.73	1566.02	2393.66	1773599.63	14567566.71	40°06'40.1593"N	80°31'25.1787"W	2860.42	56.806	10.65
7248.00	50.040	136.620	6356.45	-519.64	1519.27	2444.44	1773650.40	14567519.98	40°06'39.6947"N	80°31'24.5284"W	2878.10	58.138	9.49
7343.00	54.750	142.330	6414.44	-448.54	1462.04	2493.21	1773699.14	14567462.78	40°06'39.1266"N	80°31'23.9047"W	2890.27	59.612	6.87
7439.00	63.120	148.560	6463.97	-368.54	1394.32	2539.61	1773745.53	14567395.08	40°06'38.4548"N	80°31'23.3122"W	2897.19	61.232	10.33
7534.00	70.770	153.810	6501.17	-281.93	1317.77	2581.59	1773787.49	14567318.55	40°06'37.6961"N	80°31'22.7771"W	2898.47	62.958	9.52
7629.00	75.790	160.580	6528.52	-191.06	1233.95	2616.75	1773822.64	14567234.77	40°06'36.8660"N	80°31'22.3303"W	2893.10	64.753	8.63
7724.00	81.510	167.120	6547.22	-98.42	1144.56	2642.58	1773848.46	14567145.41	40°06'35.9813"N	80°31'22.0041"W	2879.80	66.582	9.04
7820.00	88.150	170.860	6555.87	-4.47	1050.78	2660.81	1773866.69	14567051.67	40°06'35.0535"N	80°31'21.7759"W	2860.78	68.451	7.93
7915.00	89.020	170.890	6558.22	88.31	957.01	2675.88	1773881.74	14566957.93	40°06'34.1261"N	80°31'21.5886"W	2841.86	70.321	0.92
8010.00	88.770	170.870	6560.05	181.10	863.23	2690.93	1773896.79	14566864.19	40°06'33.1986"N	80°31'21.4013"W	2826.00	72.214	0.26
8105.00	88.920	171.260	6561.97	273.82	769.40	2705.68	1773911.54	14566770.40	40°06'32.2706"N	80°31'21.2179"W	2812.95	74.126	0.44
8201.00	88.680	171.190	6563.98	367.45	674.54	2720.32	1773926.17	14566675.58	40°06'31.3324"N	80°31'21.0360"W	2802.71	76.074	0.26



Actual Wellpath Report

SEP 05 2024

William Rodgers OHI 210H awp Proj: 20998' WV Department of Environmental Protection
Page 5 of 10



REFERENCE WELLPATH IDENTIFICATION				
Operator	SWN PRODUCTION COMPANY, LLC		Well	William Rodgers OHI 210H
Field	Ohio		API	4706900367000
Facility	William Rodgers OHI Pad		Wellbore	William Rodgers OHI 210H AWB
Slot	210H			

WELLPATH DATA (224 stations)

MD [ft]	Inclination [°]	Azimuth [°]	TVD [ft]	Vert Sect [ft]	North [ft]	East [ft]	Grid East [US ft]	Grid North [US ft]	Latitude	Longitude	Closure Dist [ft]	Closure Dir [°]	DLS [°/100ft]
8296.00	88.460	170.620	6566.35	460.22	580.77	2735.34	1773941.18	14566581.84	40°06'30.4050"N	80°31'20.8493"W	2796.31	78.013	0.64
8391.00	88.680	171.960	6568.72	552.85	486.90	2749.72	1773955.56	14566488.00	40°06'29.4765"N	80°31'20.6707"W	2792.49	79.959	1.43
8487.00	88.770	171.270	6570.86	646.34	391.95	2763.71	1773969.55	14566393.09	40°06'28.5375"N	80°31'20.4972"W	2791.37	81.928	0.72
8582.00	88.150	170.400	6573.41	739.12	298.19	2778.84	1773984.67	14566299.37	40°06'27.6103"N	80°31'20.3090"W	2794.79	83.875	1.12
8677.00	89.170	170.540	6575.63	832.04	204.53	2794.56	1774000.38	14566205.74	40°06'26.6838"N	80°31'20.1131"W	2802.04	85.814	1.08
8772.00	89.540	171.260	6576.70	924.83	110.73	2809.59	1774015.40	14566111.98	40°06'25.7561"N	80°31'19.9262"W	2811.77	87.743	0.85
8868.00	87.810	170.930	6578.92	1018.51	15.92	2824.44	1774030.25	14566017.20	40°06'24.8184"N	80°31'19.7416"W	2824.49	89.677	1.83
9058.00	89.110	170.990	6584.03	1203.99	-171.65	2854.28	1774060.08	14565829.71	40°06'22.9633"N	80°31'19.3705"W	2859.44	93.441	0.68
9154.00	89.260	171.030	6585.39	1297.72	-266.46	2869.28	1774075.08	14565734.93	40°06'22.0256"N	80°31'19.1840"W	2881.63	95.306	0.16
9249.00	89.050	170.720	6586.79	1390.52	-360.25	2884.35	1774090.14	14565641.18	40°06'21.0980"N	80°31'18.9966"W	2906.76	97.119	0.39
9344.00	88.920	170.670	6588.47	1483.37	-453.98	2899.71	1774105.49	14565547.48	40°06'20.1708"N	80°31'18.8055"W	2935.03	98.898	0.15
9440.00	89.260	170.870	6590.00	1577.18	-548.73	2915.10	1774120.88	14565452.77	40°06'19.2338"N	80°31'18.6139"W	2966.30	100.660	0.41
9535.00	89.110	170.620	6591.35	1670.02	-642.48	2930.38	1774136.15	14565359.06	40°06'18.3065"N	80°31'18.4238"W	2999.98	102.366	0.31
9630.00	89.450	169.650	6592.54	1763.08	-736.07	2946.65	1774152.42	14565265.50	40°06'17.3808"N	80°31'18.2208"W	3037.20	104.025	1.08
9726.00	89.140	169.810	6593.73	1857.24	-830.52	2963.77	1774169.53	14565171.09	40°06'16.4465"N	80°31'18.0071"W	3077.94	105.654	0.36
9821.00	89.290	169.600	6595.03	1950.44	-923.98	2980.75	1774186.50	14565077.66	40°06'15.5220"N	80°31'17.7951"W	3120.67	107.223	0.27
9916.00	89.080	169.550	6596.38	2043.67	-1017.41	2997.93	1774203.68	14564984.27	40°06'14.5979"N	80°31'17.5804"W	3165.87	108.746	0.23
10012.00	89.380	169.940	6597.67	2137.83	-1111.86	3015.02	1774220.76	14564889.85	40°06'13.6635"N	80°31'17.3670"W	3213.50	110.243	0.51
10107.00	89.260	169.980	6598.80	2230.94	-1205.40	3031.58	1774237.31	14564796.35	40°06'12.7383"N	80°31'17.1604"W	3262.44	111.683	0.13
10202.00	89.050	168.920	6600.20	2324.22	-1298.78	3048.98	1774254.70	14564703.00	40°06'11.8146"N	80°31'16.9430"W	3314.07	113.073	1.14
10298.00	89.140	169.840	6601.71	2418.49	-1393.13	3066.66	1774272.38	14564608.70	40°06'10.8813"N	80°31'16.7219"W	3368.27	114.431	0.96
10393.00	89.020	169.800	6603.24	2511.64	-1486.62	3083.45	1774289.16	14564515.24	40°06'9.9566"N	80°31'16.5123"W	3423.12	115.740	0.13
10488.00	89.170	170.110	6604.74	2604.75	-1580.15	3100.02	1774305.73	14564421.74	40°06'9.0314"N	80°31'16.3056"W	3479.51	117.009	0.36
10584.00	89.050	170.110	6606.23	2698.79	-1674.71	3116.51	1774322.21	14564327.22	40°06'8.0961"N	80°31'16.1000"W	3537.98	118.252	0.12
10679.00	89.110	169.550	6607.76	2791.94	-1768.21	3133.28	1774338.97	14564233.76	40°06'7.1712"N	80°31'15.8906"W	3597.78	119.437	0.59
10774.00	88.950	169.440	6609.36	2885.20	-1861.60	3150.60	1774356.28	14564140.40	40°06'6.2474"N	80°31'15.6742"W	3659.49	120.578	0.20
10869.00	89.260	169.500	6610.85	2978.46	-1954.99	3167.96	1774373.64	14564047.05	40°06'5.3236"N	80°31'15.4573"W	3722.63	121.679	0.33
10965.00	89.320	169.590	6612.04	3072.69	-2049.39	3185.38	1774391.05	14563952.68	40°06'4.3898"N	80°31'15.2397"W	3787.69	122.756	0.11
11060.00	89.380	169.580	6613.11	3165.92	-2142.82	3202.55	1774408.21	14563859.29	40°06'3.4657"N	80°31'15.0252"W	3853.31	123.786	0.06
11155.00	89.290	169.540	6614.22	3259.16	-2236.24	3219.76	1774425.42	14563765.91	40°06'2.5416"N	80°31'14.8102"W	3920.16	124.781	0.10

SEP 05 2024



Actual Wellpath Report

William Rodgers OHI 210H awp Proj: 20998'
Page 6 of 10

WV Department of
Environmental Protection



REFERENCE WELLPATH IDENTIFICATION			
Operator	SWN PRODUCTION COMPANY, LLC	Well	William Rodgers OHI 210H
Field	Ohio	API	47069003670000
Facility	William Rodgers OHI Pad	Wellbore	William Rodgers OHI 210H AWB
Slot	210H		

WELLPATH DATA (224 stations)													
MD [ft]	Inclination [°]	Azimuth [°]	TVD [ft]	Vert Sect [ft]	North [ft]	East [ft]	Grid East [US ft]	Grid North [US ft]	Latitude	Longitude	Closure Dist [ft]	Closure Dir [°]	DLS [°/100ft]
11251.00	89.420	169.660	6615.30	3353.37	-2330.66	3237.09	1774442.74	14563671.52	40°06'1.6076"N	80°31'14.5937"W	3988.82	125.753	0.18
11346.00	89.230	169.570	6616.42	3446.60	-2424.09	3254.21	1774459.86	14563578.12	40°06'0.6834"N	80°31'14.3799"W	4057.85	126.683	0.22
11441.00	89.380	169.740	6617.57	3539.81	-2517.54	3271.27	1774476.91	14563484.71	40°05'59.7590"N	80°31'14.1668"W	4127.86	127.582	0.24
11536.00	89.320	169.470	6618.65	3633.04	-2610.98	3288.41	1774494.05	14563391.31	40°05'58.8347"N	80°31'13.9527"W	4198.91	128.449	0.29
11632.00	89.260	169.350	6619.84	3727.31	-2705.34	3306.05	1774511.68	14563296.99	40°05'57.9014"N	80°31'13.7323"W	4271.87	129.293	0.14
11727.00	89.200	169.440	6621.11	3820.60	-2798.70	3323.54	1774529.16	14563203.66	40°05'56.9778"N	80°31'13.5138"W	4344.96	130.100	0.11
11823.00	89.420	169.850	6622.27	3914.80	-2893.13	3340.79	1774546.40	14563109.26	40°05'56.0437"N	80°31'13.2983"W	4419.40	130.893	0.48
11918.00	89.260	168.920	6623.36	4008.09	-2986.50	3358.29	1774563.89	14563015.93	40°05'55.1201"N	80°31'13.0796"W	4494.14	131.646	0.99
12013.00	89.290	170.180	6624.57	4101.33	-3079.92	3375.52	1774581.12	14562922.55	40°05'54.1961"N	80°31'12.8644"W	4569.46	132.378	1.33
12109.00	89.420	170.640	6625.65	4195.27	-3174.57	3391.51	1774597.10	14562827.94	40°05'53.2599"N	80°31'12.6652"W	4645.45	133.108	0.50
12204.00	89.510	170.490	6626.53	4288.19	-3268.28	3407.08	1774612.67	14562734.26	40°05'52.3330"N	80°31'12.4713"W	4721.21	133.809	0.18
12299.00	89.320	170.360	6627.50	4381.14	-3361.95	3422.88	1774628.47	14562640.63	40°05'51.4065"N	80°31'12.2745"W	4797.80	134.485	0.24
12395.00	89.350	170.490	6628.62	4475.08	-3456.61	3438.85	1774644.43	14562546.01	40°05'50.4702"N	80°31'12.0756"W	4875.84	135.148	0.14
12490.00	89.450	170.890	6629.61	4567.95	-3550.35	3454.22	1774659.79	14562452.30	40°05'49.5430"N	80°31'11.8843"W	4953.44	135.786	0.43
12586.00	89.480	170.850	6630.51	4661.73	-3645.13	3469.45	1774675.01	14562357.55	40°05'48.6056"N	80°31'11.6949"W	5032.30	136.414	0.05
12681.00	89.350	170.340	6631.48	4754.63	-3738.85	3484.97	1774690.53	14562263.87	40°05'47.6787"N	80°31'11.5017"W	5111.17	137.013	0.55
12777.00	89.480	170.780	6632.46	4848.52	-3833.54	3500.72	1774706.27	14562169.21	40°05'46.7421"N	80°31'11.3057"W	5191.44	137.598	0.48
12873.00	89.420	168.650	6633.38	4942.69	-3927.99	3517.86	1774723.40	14562074.80	40°05'45.8078"N	80°31'11.0917"W	5272.99	138.153	2.22
12968.00	89.230	166.770	6634.50	5036.46	-4020.80	3538.08	1774743.61	14561982.03	40°05'44.8896"N	80°31'10.8380"W	5355.82	138.654	1.99
13064.00	89.350	164.550	6635.69	5131.71	-4113.80	3561.85	1774767.38	14561889.07	40°05'43.9693"N	80°31'10.5385"W	5441.52	139.113	2.32
13160.00	89.420	163.010	6636.72	5227.30	-4205.97	3588.66	1774794.18	14561796.93	40°05'43.0570"N	80°31'10.1999"W	5528.89	139.528	1.61
13257.00	89.260	160.740	6637.84	5324.12	-4298.14	3618.84	1774824.34	14561704.79	40°05'42.1446"N	80°31'9.8181"W	5618.72	139.904	2.35
13352.00	89.450	158.820	6638.91	5419.09	-4387.28	3651.67	1774857.16	14561615.69	40°05'41.2620"N	80°31'9.4019"W	5708.14	140.228	2.03
13447.00	89.260	158.700	6639.98	5514.08	-4475.82	3686.08	1774891.56	14561527.18	40°05'40.3852"N	80°31'8.9652"W	5798.29	140.527	0.24
13542.00	89.260	159.030	6641.20	5609.07	-4564.42	3720.33	1774925.80	14561438.61	40°05'39.5078"N	80°31'8.5307"W	5888.53	140.817	0.35
13638.00	89.350	158.770	6642.37	5705.07	-4653.98	3754.89	1774960.34	14561349.09	40°05'38.6209"N	80°31'8.0922"W	5979.86	141.103	0.29
13733.00	89.230	158.890	6643.55	5800.06	-4742.56	3789.19	1774994.63	14561260.54	40°05'37.7437"N	80°31'7.6570"W	6070.41	141.376	0.18
13829.00	89.200	158.600	6644.86	5896.05	-4832.02	3823.99	1775029.42	14561171.12	40°05'36.8578"N	80°31'7.2155"W	6162.09	141.642	0.30
13924.00	88.890	158.480	6646.44	5991.03	-4920.42	3858.74	1775064.16	14561082.75	40°05'35.9824"N	80°31'6.7745"W	6253.04	141.895	0.35
14019.00	89.230	158.390	6648.00	6086.02	-5008.76	3893.66	1775099.06	14560994.44	40°05'35.1075"N	80°31'6.3314"W	6344.15	142.140	0.37

SEP 05 2024

WV Department of
Environmental Protection



Actual Wellpath Report

William Rodgers OHI 210H awp Proj: 20998'
Page 7 of 10



REFERENCE WELLPATH IDENTIFICATION			
Operator	SWN PRODUCTION COMPANY, LLC	Well	William Rodgers OHI 210H
Field	Ohio	API	47069003670000
Facility	William Rodgers OHI Pad	Wellbore	William Rodgers OHI 210H AWB
Slot	210H		

WELLPATH DATA (224 stations)													
MD [ft]	Inclination [°]	Azimuth [°]	TVD [ft]	Vert Sect [ft]	North [ft]	East [ft]	Grid East [US ft]	Grid North [US ft]	Latitude	Longitude	Closure Dist [ft]	Closure Dir [°]	DLS [°/100ft]
14114.00	89.200	158.420	6649.30	6181.01	-5097.08	3928.62	1775134.00	14560906.15	40°05'34.2329"N	80°31'5.8877"W	6435.39	142.376	0.04
14210.00	89.450	158.590	6650.44	6277.00	-5186.40	3963.79	1775169.17	14560816.87	40°05'33.3483"N	80°31'5.4414"W	6527.66	142.611	0.31
14305.00	89.110	158.420	6651.63	6372.00	-5274.79	3998.60	1775203.96	14560728.52	40°05'32.4731"N	80°31'4.9997"W	6619.08	142.836	0.40
14400.00	89.050	158.360	6653.15	6466.98	-5363.10	4033.58	1775238.93	14560640.24	40°05'31.5985"N	80°31'4.5557"W	6710.63	143.053	0.09
14495.00	89.380	158.660	6654.46	6561.97	-5451.49	4068.38	1775273.71	14560551.89	40°05'30.7232"N	80°31'4.1141"W	6802.24	143.266	0.47
14591.00	89.420	158.940	6655.46	6657.97	-5540.98	4103.09	1775308.41	14560462.43	40°05'29.8369"N	80°31'3.6737"W	6894.77	143.480	0.29
14686.00	89.660	158.790	6656.22	6752.96	-5629.59	4137.35	1775342.65	14560373.85	40°05'28.9595"N	80°31'3.2392"W	6986.41	143.687	0.30
14781.00	89.020	158.300	6657.32	6847.96	-5718.00	4172.09	1775377.39	14560285.48	40°05'28.0839"N	80°31'2.7983"W	7078.27	143.884	0.85
14877.00	89.570	157.390	6658.50	6943.94	-5806.90	4208.29	1775413.57	14560196.61	40°05'27.2034"N	80°31'2.3387"W	7171.46	144.069	1.11
14972.00	89.450	158.140	6659.31	7038.93	-5894.84	4244.24	1775449.51	14560108.71	40°05'26.3326"N	80°31'1.8824"W	7263.79	144.246	0.80
15067.00	89.200	157.850	6660.43	7133.92	-5982.91	4279.83	1775485.08	14560020.67	40°05'25.4603"N	80°31'1.4306"W	7356.10	144.422	0.40
15163.00	88.890	156.930	6662.03	7229.88	-6071.52	4316.73	1775521.97	14559932.09	40°05'24.5827"N	80°31'0.9620"W	7449.67	144.588	1.01
15258.00	89.320	157.640	6663.51	7324.85	-6159.14	4353.41	1775558.64	14559844.51	40°05'23.7149"N	80°31'0.4962"W	7542.36	144.746	0.87
15353.00	89.080	157.480	6664.84	7419.82	-6246.94	4389.67	1775594.88	14559756.74	40°05'22.8453"N	80°31'0.0358"W	7635.01	144.905	0.30
15448.00	88.980	157.270	6666.45	7514.79	-6334.61	4426.21	1775631.41	14559669.10	40°05'21.9769"N	80°30'59.5717"W	7727.79	145.057	0.24
15543.00	88.890	157.420	6668.22	7609.75	-6422.27	4462.80	1775667.98	14559581.48	40°05'21.1087"N	80°30'59.1072"W	7820.62	145.205	0.18
15639.00	89.050	157.480	6669.94	7705.72	-6510.91	4499.61	1775704.78	14559492.87	40°05'20.2308"N	80°30'58.6398"W	7914.45	145.352	0.18
15734.00	89.290	157.500	6671.32	7800.70	-6598.67	4535.97	1775741.13	14559405.15	40°05'19.3616"N	80°30'58.1780"W	8007.34	145.495	0.25
15829.00	89.170	157.590	6672.59	7895.67	-6686.46	4572.26	1775777.40	14559317.39	40°05'18.4922"N	80°30'57.7173"W	8100.26	145.635	0.16
15924.00	89.480	157.720	6673.71	7990.65	-6774.32	4608.37	1775813.50	14559229.56	40°05'17.6220"N	80°30'57.2588"W	8193.20	145.774	0.35
16019.00	89.510	158.110	6674.55	8085.65	-6862.34	4644.09	1775849.20	14559141.57	40°05'16.7502"N	80°30'56.8055"W	8286.09	145.912	0.41
16115.00	89.450	157.700	6675.42	8181.64	-6951.29	4680.20	1775885.30	14559052.66	40°05'15.8693"N	80°30'56.3471"W	8380.01	146.048	0.43
16210.00	89.480	157.480	6676.31	8276.62	-7039.11	4716.41	1775921.50	14558964.87	40°05'14.9995"N	80°30'55.8873"W	8473.11	146.177	0.23
16306.00	89.320	158.110	6677.31	8372.60	-7127.98	4752.69	1775957.76	14558876.03	40°05'14.1193"N	80°30'55.4268"W	8567.16	146.306	0.68
16401.00	89.380	158.020	6678.39	8467.59	-7216.10	4788.18	1775993.24	14558787.95	40°05'13.2466"N	80°30'54.9764"W	8660.18	146.434	0.11
16496.00	89.450	157.690	6679.36	8562.58	-7304.09	4823.98	1776029.03	14558699.99	40°05'12.3752"N	80°30'54.5219"W	8753.32	146.557	0.36
16592.00	89.260	157.340	6680.44	8658.56	-7392.79	4860.70	1776065.73	14558611.33	40°05'11.4967"N	80°30'54.0558"W	8847.58	146.675	0.41
16687.00	89.200	157.260	6681.72	8753.53	-7480.42	4897.35	1776102.37	14558523.73	40°05'10.6287"N	80°30'53.5903"W	8940.96	146.788	0.11
16782.00	89.170	157.530	6683.07	8848.50	-7568.11	4933.87	1776138.87	14558436.07	40°05'9.7602"N	80°30'53.1267"W	9034.34	146.899	0.29
16878.00	89.420	157.680	6684.25	8944.48	-7656.86	4970.44	1776175.43	14558347.35	40°05'8.8811"N	80°30'52.6624"W	9128.68	147.010	0.30



Actual Wellpath Report

SEP 05 2024
William Rodgers OHI 210H awp Proj: 20998'
Page 8 of 10



REFERENCE WELLPATH IDENTIFICATION			
Operator	SWN PRODUCTION COMPANY, LLC	Well	William Rodgers OHI 210H
Field	Ohio	API	47069003670000
Facility	William Rodgers OHI Pad	Wellbore	William Rodgers OHI 210H AWB
Slot	210H		

WELLPATH DATA (224 stations)													
MD [ft]	Inclination [°]	Azimuth [°]	TVD [ft]	Vert Sect [ft]	North [ft]	East [ft]	Grid East [US ft]	Grid North [US ft]	Latitude	Longitude	Closure Dist [ft]	Closure Dir [°]	DLS [°/100ft]
16973.00	89.170	157.820	6685.42	9039.46	-7744.78	5006.41	1776211.38	14558259.47	40°05'8.0104"N	80°30'52.2058"W	9222.03	147.120	0.30
17068.00	89.200	157.310	6686.77	9134.44	-7832.58	5042.66	1776247.62	14558171.70	40°05'7.1408"N	80°30'51.7456"W	9315.46	147.226	0.54
17163.00	89.110	157.930	6688.17	9229.42	-7920.42	5078.83	1776283.77	14558083.90	40°05'6.2708"N	80°30'51.2865"W	9408.91	147.331	0.66
17259.00	89.290	157.580	6689.51	9325.40	-8009.27	5115.17	1776320.10	14557995.09	40°05'5.3909"N	80°30'50.8252"W	9503.33	147.435	0.41
17354.00	89.290	157.930	6690.69	9420.38	-8097.19	5151.13	1776356.05	14557907.20	40°05'4.5201"N	80°30'50.3687"W	9596.80	147.537	0.37
17449.00	89.170	157.610	6691.97	9515.37	-8185.12	5187.06	1776391.97	14557819.30	40°05'3.6492"N	80°30'49.9126"W	9690.29	147.637	0.36
17544.00	89.350	157.640	6693.19	9610.35	-8272.96	5223.22	1776428.12	14557731.50	40°05'2.7792"N	80°30'49.4535"W	9783.86	147.733	0.19
17639.00	89.970	158.100	6693.76	9705.34	-8360.96	5259.01	1776463.89	14557643.53	40°05'1.9077"N	80°30'48.9993"W	9877.39	147.830	0.81
17735.00	89.110	157.240	6694.53	9801.32	-8449.75	5295.48	1776500.35	14557554.77	40°05'1.0282"N	80°30'48.5363"W	9971.99	147.925	1.27
17830.00	89.350	155.780	6695.81	9896.25	-8536.87	5333.34	1776538.19	14557467.68	40°05'0.1653"N	80°30'48.0554"W	10065.92	148.005	1.56
17925.00	89.200	153.280	6697.01	9991.00	-8622.62	5374.19	1776579.03	14557381.96	40°04'59.3157"N	80°30'47.5359"W	10160.30	148.066	2.64
18020.00	89.630	151.780	6697.98	10085.47	-8706.91	5418.01	1776622.83	14557297.71	40°04'58.4804"N	80°30'46.9781"W	10255.00	148.107	1.64
18115.00	89.140	149.240	6699.00	10179.53	-8789.59	5464.77	1776669.57	14557215.06	40°04'57.6609"N	80°30'46.3824"W	10349.91	148.129	2.72
18211.00	89.200	147.630	6700.39	10274.03	-8871.37	5515.01	1776719.80	14557133.31	40°04'56.8499"N	80°30'45.7417"W	10445.89	148.132	1.68
18306.00	89.200	145.150	6701.71	10366.88	-8950.48	5567.59	1776772.35	14557054.24	40°04'56.0654"N	80°30'45.0709"W	10540.83	148.117	2.61
18401.00	89.170	143.260	6703.07	10458.91	-9027.52	5623.15	1776827.89	14556977.22	40°04'55.3010"N	80°30'44.3616"W	10635.60	148.082	1.99
18497.00	89.260	142.120	6704.38	10551.25	-9103.87	5681.33	1776886.05	14556900.90	40°04'54.5434"N	80°30'43.6185"W	10731.17	148.034	1.19
18593.00	89.080	141.580	6705.77	10643.20	-9179.35	5740.62	1776945.32	14556825.45	40°04'53.7942"N	80°30'42.8610"W	10826.60	147.979	0.59
18688.00	89.350	142.100	6707.07	10734.18	-9254.04	5799.32	1777003.99	14556750.78	40°04'53.0530"N	80°30'42.1112"W	10921.05	147.925	0.62
18784.00	89.200	141.970	6708.29	10826.22	-9329.72	5858.37	1777063.02	14556675.13	40°04'52.3019"N	80°30'41.3569"W	11016.54	147.874	0.21
18880.00	89.350	141.910	6709.50	10918.21	-9405.30	5917.55	1777122.17	14556599.58	40°04'51.5518"N	80°30'40.6009"W	11112.02	147.823	0.17
18975.00	89.200	141.680	6710.70	11009.17	-9479.95	5976.30	1777180.90	14556524.97	40°04'50.8110"N	80°30'39.8504"W	11206.50	147.772	0.29
19070.00	89.170	141.610	6712.06	11100.06	-9554.44	6035.24	1777239.82	14556450.50	40°04'50.0716"N	80°30'39.0974"W	11300.95	147.721	0.08
19166.00	89.140	141.820	6713.47	11191.94	-9629.78	6094.71	1777299.27	14556375.19	40°04'49.3238"N	80°30'38.3376"W	11396.42	147.670	0.22
19261.00	89.940	142.440	6714.23	11283.07	-9704.78	6153.03	1777357.57	14556300.23	40°04'48.5796"N	80°30'37.5927"W	11490.97	147.624	1.07
19357.00	89.510	141.890	6714.70	11375.17	-9780.59	6211.91	1777416.43	14556224.44	40°04'47.8272"N	80°30'36.8406"W	11586.54	147.579	0.73
19452.00	89.110	139.140	6715.84	11465.50	-9853.90	6272.31	1777476.80	14556151.16	40°04'47.0995"N	80°30'36.0688"W	11680.81	147.522	2.92
19548.00	89.510	134.830	6717.00	11554.75	-9924.07	6337.78	1777542.25	14556081.01	40°04'46.4025"N	80°30'35.2315"W	11775.17	147.437	4.51
19643.00	89.230	135.830	6718.04	11642.06	-9991.63	6404.56	1777609.00	14556013.48	40°04'45.7313"N	80°30'34.3772"W	11868.07	147.340	1.09
19738.00	89.380	135.880	6719.19	11729.70	-10059.79	6470.72	1777675.14	14555945.34	40°04'45.0540"N	80°30'33.5309"W	11961.17	147.250	0.17



Southwestern Energy®

RECEIVED
Office Of Oil and Gas

SEP 05 2024

WV Department of
Environmental Protection

Actual Wellpath Report

William Rodgers OHI 210H awp Proj: 20998

Page 9 of 10

WV Department of
Environmental Protection

RECEIVED
Office Of Oil and Gas

SEP 05 2024



REFERENCE WELLPATH IDENTIFICATION			
Operator	SWN PRODUCTION COMPANY, LLC	Well	William Rodgers OHI 210H
Field	Ohio	API	4706900367000
Facility	William Rodgers OHI Pad	Wellbore	William Rodgers OHI 210H AWB
Slot	210H		

WELLPATH DATA (224 stations) † = interpolated, ‡ = extrapolated station													
MD [ft]	Inclination [°]	Azimuth [°]	TVD [ft]	Vert Sect [ft]	North [ft]	East [ft]	Grid East [US ft]	Grid North [US ft]	Latitude	Longitude	Closure Dist [ft]	Closure Dir [°]	DLS [°/100ft]
19833.00	89.510	136.510	6720.11	11817.57	-10128.35	6536.48	1777740.87	14555876.81	40°04'44.3730"N	80°30'32.6899"W	12054.42	147.163	0.68
19929.00	89.540	136.140	6720.91	11906.44	-10197.78	6602.77	1777807.14	14555807.41	40°04'43.6832"N	80°30'31.8420"W	12148.72	147.078	0.39
20025.00	89.720	134.040	6721.53	11994.50	-10265.77	6670.54	1777874.88	14555739.45	40°04'43.0077"N	80°30'30.9750"W	12242.63	146.985	2.20
20120.00	89.200	133.860	6722.42	12080.88	-10331.69	6738.93	1777943.25	14555673.55	40°04'42.3525"N	80°30'30.0999"W	12335.20	146.885	0.58
20215.00	88.490	135.230	6724.34	12167.65	-10398.32	6806.62	1778010.91	14555606.95	40°04'41.6904"N	80°30'29.2339"W	12428.00	146.792	1.62
20311.00	89.510	134.220	6726.02	12255.46	-10465.86	6874.82	1778079.08	14555539.43	40°04'41.0192"N	80°30'28.3614"W	12521.88	146.700	1.50
20406.00	89.450	133.820	6726.88	12341.89	-10531.88	6943.13	1778147.37	14555473.44	40°04'40.3631"N	80°30'27.4874"W	12614.57	146.605	0.43
20501.00	89.510	134.340	6727.74	12428.36	-10597.96	7011.37	1778215.58	14555407.38	40°04'39.7063"N	80°30'26.6142"W	12707.33	146.512	0.55
20597.00	89.420	134.010	6728.64	12515.81	-10664.86	7080.22	1778284.40	14555340.51	40°04'39.0415"N	80°30'25.7333"W	12801.12	146.420	0.36
20693.00	89.350	133.950	6729.67	12603.12	-10731.51	7149.30	1778353.45	14555273.88	40°04'38.3790"N	80°30'24.8494"W	12894.88	146.329	0.10
20788.00	89.480	134.020	6730.64	12689.52	-10797.49	7217.65	1778421.78	14555207.93	40°04'37.7233"N	80°30'23.9749"W	12987.69	146.239	0.16
20883.00	89.480	133.960	6731.50	12775.93	-10863.46	7286.00	1778490.10	14555141.98	40°04'37.0676"N	80°30'23.1004"W	13080.54	146.151	0.06
20973.00	89.570	133.540	6732.24	12857.63	-10925.70	7351.01	1778555.08	14555079.77	40°04'36.4490"N	80°30'22.2686"W	13168.45	146.067	0.48
20998.00‡	89.570	133.540	6732.43	12880.29	-10942.92	7369.13	1778573.20	14555062.56	40°04'36.2779"N	80°30'22.0367"W	13192.86	146.043	0.00

HOLE & CASING SECTIONS - Ref Wellbore: William Rodgers OHI 210H AWB Ref Wellpath: William Rodgers OHI 210H awp Proj: 20998'									
String/Diameter	Start MD [ft]	End MD [ft]	Interval [ft]	Start TVD [ft]	End TVD [ft]	Start N/S [ft]	Start E/W [ft]	End N/S [ft]	End E/W [ft]
13.375in Casing	26.00	408.00	382.00	26.00	408.00	0.00	0.00	0.20	-0.47



RECEIVED
Office Of Oil and Gas
SEP 05 2024
WV Department of
Environmental Protection

Actual Wellpath Report

William Rodgers OHI 210H awp Proj: 20998'
Page 10 of 10

RECEIVED
Office Of Oil and Gas
SEP 05 2024
WV Department of
Environmental Protection



REFERENCE WELLPATH IDENTIFICATION			
Operator	SWN PRODUCTION COMPANY, LLC	Well	William Rodgers OHI 210H
Field	Ohio	API	47069003670000
Facility	William Rodgers OHI Pad	Wellbore	William Rodgers OHI 210H AWB
Slot	210H		

TARGETS								
Name	TVD [ft]	North [ft]	East [ft]	Grid East [US ft]	Grid North [US ft]	Latitude	Longitude	Shape
William Rodgers OHI 210H wp1	6499.60	-3860.77	3523.46	1774729.00	14562142.00	40°05'46.4718"N	80°31'11.0150"W	point
William Rodgers OHI 210H LP rev 2	6558.00	1051.41	2647.27	1773853.15	14567052.30	40°06'35.0605"N	80°31'21.9502"W	point
William Rodgers OHI 210H wp2	6599.60	-8423.51	5278.13	1776483.00	14557581.00	40°05'1.2885"N	80°30'48.7578"W	point
William Rodgers OHI 210H wp3	6649.60	-9045.75	5680.28	1776885.00	14556959.00	40°04'55.1178"N	80°30'43.6279"W	point
William Rodgers OHI 210H wp4	6699.60	-9784.03	6205.48	1777410.00	14556221.00	40°04'47.7936"N	80°30'36.9235"W	point
William Rodgers OHI 210H BHL rev 2	6732.00	-10945.77	7363.03	1778567.10	14555059.70	40°04'36.2500"N	80°30'22.1153"W	point

WELLPATH COMPOSITION - Ref Wellbore: William Rodgers OHI 210H AWB Ref Wellpath: William Rodgers OHI 210H awp Proj: 20998'					
Start MD [ft]	End MD [ft]	Positional Uncertainty Model	Log Name/Comment	Wellbore	Survey Date
26.00	356.00	OWSG MWD rev2 + IFR1 + Multi-Station Correction	1 Total MWD 17.5" IFR-MSA 173' - 356'	William Rodgers OHI 210H AWB	5/14/2024
356.00	2062.00	OWSG MWD rev2 + IFR1 + Multi-Station Correction	2 Total MWD 12.25" IFR-MSA 423' - 2062'	William Rodgers OHI 210H AWB	5/14/2024
2062.00	20998.00	OWSG MWD rev2 + IFR1 + Multi-Station Correction	3 BH MWD ATC 8.5" IFR-MSA 2178' - 20973'	William Rodgers OHI 210H AWB	5/14/2024