



Southwestern Energy



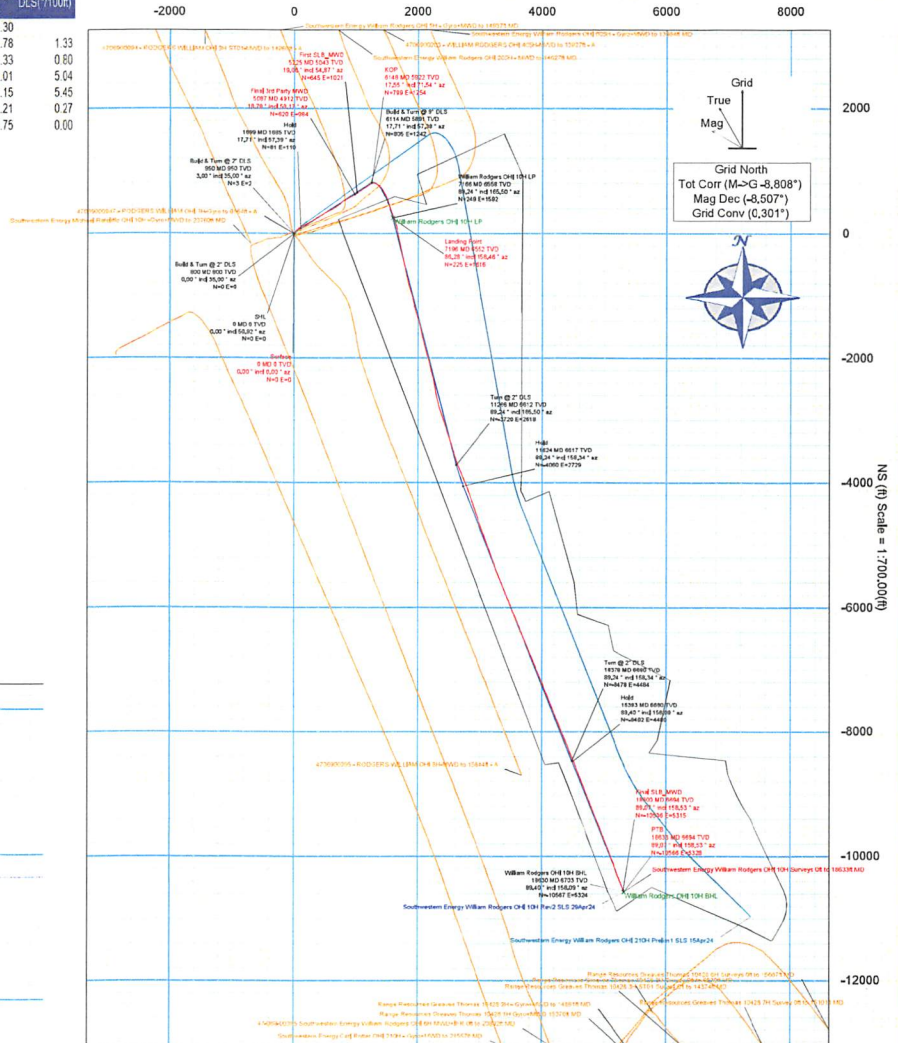
Borehole: William Rodgers OHI 10H	Well: William Rodgers OHI 10H	Field: WV Ohio County (NAD 83 UTM 17N)	Structure: SDC41
---	---	--	----------------------------

Gravity & Magnetic Parameters Model: IFR1 Dip: 66.94° Date: 30-Apr-2024 MagDec: -8.507° FS: 52137nT Gravity FS: 999.359mgn (8,80665 Based)	Surface Location NAD83 Universal Transverse Mercator, Zone 17 North, US Feet Lat: N 40 6 24.55 Northing: 14566015.42ftUS Grid Conv: 0.30137 Lon: W 80 31 56.11 Easting: 1771205.74ftUS Scale Fact: 0.99961956	Miscellaneous Slot: William Rodgers OHI 10H Plan: Southwestern Energy William Rodgers OHI 10H Rev2 SLS 29Apr24 TVD Ref: RKB (1305.300 ft above MSL)
---	---	---

Well Name	Shape	Dimension	Latitude	Longitude	Northing	Easting	TVD	V-Tec	W-Vec	Local Coord
Southwestern Energy William Rodgers OHI 10H South East Boundary	Point	N/A	N 40 6 33.05	W 80 31 48.03	14566015.15	1771205.20	5.00	343.30	953.08	3563.27
William Rodgers OHI 10H LP	Point	N/A	N 40 6 27.33	W 80 31 30.80	14566024.52	1772795.85	6555.00	283.30	294.00	1591.22
William Rodgers OHI 10H B-L	Point	N/A	N 40 6 45.24	W 80 30 48.33	14565452.09	1776227.88	6703.00	11722.79	-10567.37	5324.18

Comments	Critical Points									
	Survey MD(ft)	Inclination(deg)	Azimuth(deg)	TVD(ft)	VS(ft)	NS(ft)	EW(ft)	Sub-Sea TVD	DLS:(/100ft)	
Surface	0.00	0.00	0.00	0.00	0.00	0.00	0.00	-1.305.30		
Final 3rd Party MWD	5,087.00	18.78	58.17	4,912.08	-267.66	620.21	983.94	3,606.78	1.33	
First SLB_MWD	5,225.00	19.06	54.87	5,042.63	-278.92	644.89	1,021.24	3,737.33	0.60	
KOP	6,148.00	17.55	71.54	5,922.31	-349.05	798.76	1,253.83	4,617.01	5.04	
Landing Point	7,196.00	86.28	158.46	6,552.45	-311.25	224.97	1,616.25	5,247.15	5.45	
Final SLB_MWD	18,600.00	89.07	158.53	6,693.51	-11,869.86	-10,535.56	5,315.43	5,388.21	0.27	
PTB	18,633.00	89.07	158.53	6,694.05	-11,722.82	-10,566.27	5,327.50	5,388.75	0.00	

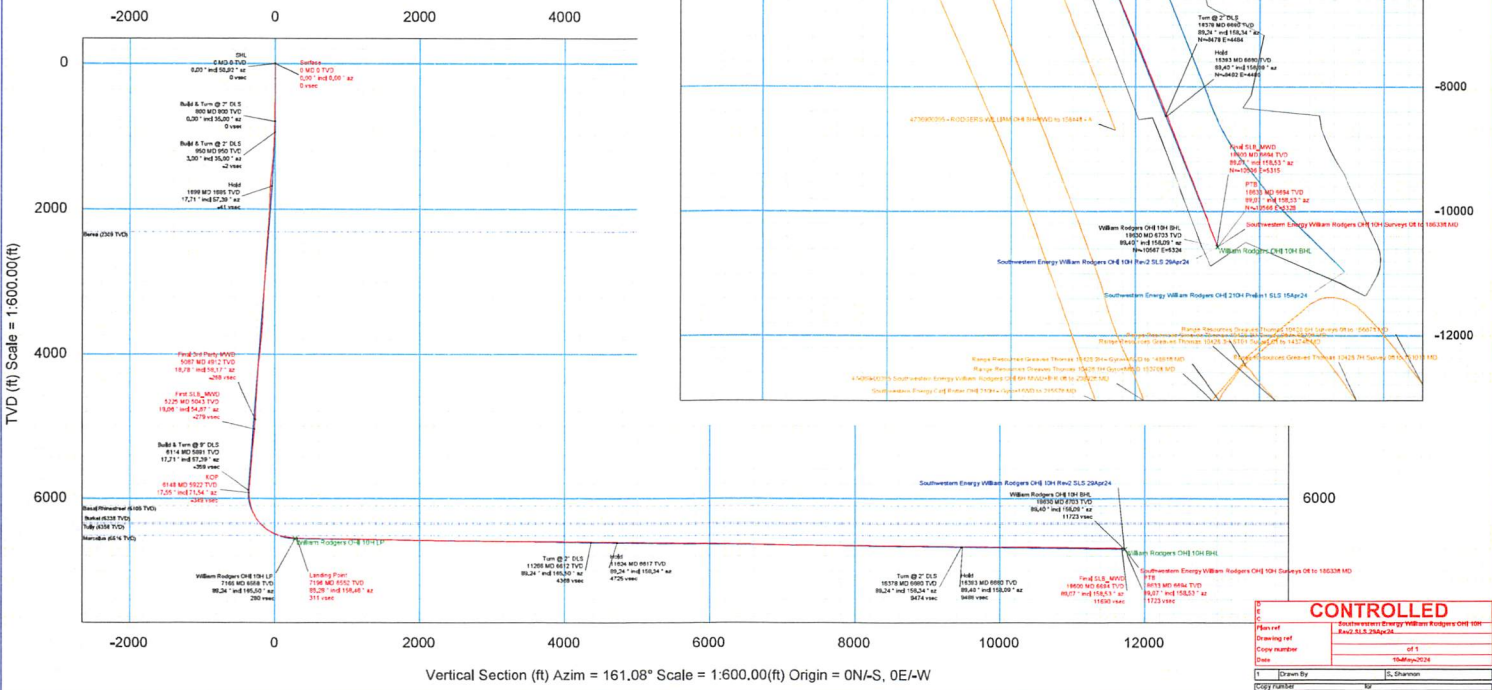
EW (ft) Scale = 1:700.00(ft)



RECEIVED
Office Of Oil and Gas

SEP 05 2024

WV Department of
Environmental Protection



10/25/2024



Southwestern Energy William Rodgers OHI 10H Surveys 0ft to 18633ft MD

Survey Geodetic Report

Definitive Survey

Report Date:	May 09, 2024 - 10:12 PM (UTC 0)	Survey / DLS Computation:	Minimum Curvature / Lubinski
Client:	Southwestern Energy	Vertical Section Azimuth:	161.080 *(Grid North)
Field:	WV Ohio County (NAD 83 UTM 17N)	Vertical Section Origin:	0,000 ft, 0,000 ft
Structure / Slot:	Southwestern Energy William Rodgers OHI Pad / William Rodgers OHI 10H	TVD Reference Datum:	RKB
Well:	William Rodgers OHI 10H	TVD Reference Elevation:	1305,300 ft above MSL
Borehole:	William Rodgers OHI 10H	Seabed / Ground Elevation:	1279,300 ft above MSL
UBHI / API / JobNumber:	Unknown / Unknown / Unknown	Magnetic Declination:	-8.507*
Survey Name / Version:	Southwestern Energy William Rodgers OHI 10H Surveys 0ft to 18633ft	Total Gravity Field Strength:	999,3586mgm (9,80665 Based)
Survey Date:	May 05 2024	Gravity Model:	GARM
Tort / AHD / DDI / ERD Ratio:	298.037 * / 13656.848 ft / 7.054 / 2.040	Total Magnetic Field Strength:	52137 nT
Coordinate Reference System:	NAD83 Universal Transverse Mercator, Zone 17 North, US Feet	Magnetic Dip Angle:	66.94*
Location Lat / Long:	N 40°6'24.94921" , W 80°31'56.10578"	Declination Date:	April 30, 2024
Location Grid N/E Y/X:	N 14566015.420 ftUS , E 1771205.741 ftUS	Magnetic Declination Model:	IFR1
CRS Grid Convergence Angle:	0.301*	North Reference:	Grid
Grid Scale Factor:	0.99961956(Applied)	Total Corr Mag	-8.808*
Engine Version:	2024.1.0.1	Local Coord Referenced To:	Well Head

Comments	MD (ft)	Incl (°)	Azim (°)	TVD (ft)	VSEC (ft)	NS (ft)	EW (ft)	TVDSS (ft)	DLS (%/100ft)	Northing (ftUS)	Easting (ftUS)	Latitude (N/S ° ' ")	Longitude (E/W ° ' ")
Surface	0.00	0.00	0.00	0.00	0.00	0.00	0.00	-1,305.30		14,566,015.42	1,771,205.74	N 40°6'24.95"	W 80°31'56.11"
	187.00	0.08	104.34	187.00	0.07	-0.03	0.13	-1,118.30	0.04	14,566,015.39	1,771,205.87	N 40°6'24.95"	W 80°31'56.10"
	232.00	0.07	77.66	232.00	0.09	-0.03	0.18	-1,073.30	0.08	14,566,015.39	1,771,205.92	N 40°6'24.95"	W 80°31'56.10"
	323.00	0.05	4.08	323.00	0.06	0.02	0.24	-982.30	0.08	14,566,015.44	1,771,205.98	N 40°6'24.95"	W 80°31'56.10"
	354.00	0.25	32.63	354.00	0.01	0.09	0.28	-951.30	0.67	14,566,015.51	1,771,206.02	N 40°6'24.95"	W 80°31'56.10"
	421.00	0.33	52.63	421.00	-0.14	0.33	0.51	-884.30	0.19	14,566,015.75	1,771,206.25	N 40°6'24.95"	W 80°31'56.10"
	514.00	0.65	33.90	514.00	-0.55	0.93	1.02	-791.30	0.38	14,566,016.35	1,771,206.76	N 40°6'24.96"	W 80°31'56.09"
	604.00	0.87	45.93	603.99	-1.15	1.83	1.79	-701.31	0.30	14,566,017.25	1,771,207.53	N 40°6'24.97"	W 80°31'56.08"
	696.00	0.93	27.19	695.98	-1.96	2.98	2.64	-609.32	0.32	14,566,018.40	1,771,208.38	N 40°6'24.98"	W 80°31'56.07"
	786.00	1.15	23.97	785.96	-3.13	4.45	3.34	-519.34	0.25	14,566,019.87	1,771,209.08	N 40°6'24.99"	W 80°31'56.06"
	877.00	1.40	26.42	876.94	-4.58	6.28	4.20	-428.36	0.28	14,566,021.70	1,771,209.94	N 40°6'25.01"	W 80°31'56.05"
	969.00	2.40	27.68	968.89	-6.69	8.99	5.60	-336.41	1.09	14,566,024.41	1,771,211.34	N 40°6'25.04"	W 80°31'56.03"
	1,061.00	4.52	34.25	1,060.71	-10.19	13.70	8.53	-244.59	2.34	14,566,029.11	1,771,214.27	N 40°6'25.08"	W 80°31'56.00"
	1,151.00	6.60	32.84	1,150.29	-15.52	20.98	13.33	-155.01	2.32	14,566,036.39	1,771,219.07	N 40°6'25.16"	W 80°31'55.93"
	1,243.00	8.62	35.43	1,241.47	-22.81	31.04	20.20	-63.83	2.23	14,566,046.44	1,771,225.93	N 40°6'25.25"	W 80°31'55.84"
	1,334.00	10.59	40.95	1,331.19	-30.98	42.91	29.63	25.89	2.39	14,566,058.31	1,771,235.36	N 40°6'25.37"	W 80°31'55.72"
	1,425.00	12.97	45.26	1,420.27	-39.63	56.42	42.37	114.97	2.79	14,566,071.81	1,771,248.09	N 40°6'25.50"	W 80°31'55.56"
	1,515.00	15.48	47.67	1,507.51	-48.80	71.62	58.43	202.21	2.86	14,566,087.01	1,771,264.14	N 40°6'25.65"	W 80°31'55.25"
	1,606.00	16.62	52.04	1,594.96	-57.87	87.80	77.67	289.66	1.82	14,566,103.19	1,771,283.38	N 40°6'25.81"	W 80°31'55.10"
	1,697.00	15.94	58.92	1,682.32	-64.75	102.26	98.63	377.02	2.25	14,566,117.64	1,771,304.33	N 40°6'25.95"	W 80°31'54.83"
	1,787.00	15.82	65.81	1,768.89	-68.48	113.66	120.41	463.59	2.10	14,566,129.04	1,771,326.10	N 40°6'26.07"	W 80°31'54.55"
	1,878.00	17.57	66.71	1,856.05	-70.67	124.18	144.34	550.75	1.94	14,566,139.55	1,771,350.03	N 40°6'26.17"	W 80°31'54.24"
	1,968.00	17.62	65.88	1,941.84	-72.94	135.12	169.25	636.54	0.28	14,566,150.48	1,771,374.93	N 40°6'26.28"	W 80°31'53.92"
	2,059.00	17.86	64.55	2,028.52	-75.77	146.74	194.42	723.22	0.52	14,566,162.11	1,771,400.09	N 40°6'26.39"	W 80°31'53.59"
	2,171.00	18.03	60.45	2,135.07	-80.92	162.67	225.01	829.77	1.14	14,566,178.03	1,771,430.66	N 40°6'26.55"	W 80°31'53.20"
	2,261.00	18.31	57.20	2,220.59	-86.88	177.20	249.01	915.29	1.17	14,566,192.55	1,771,454.65	N 40°6'26.69"	W 80°31'52.89"
	2,351.00	17.75	56.76	2,306.17	-93.67	192.38	272.37	1,000.87	0.64	14,566,207.72	1,771,478.00	N 40°6'26.84"	W 80°31'52.59"
	2,442.00	17.53	59.26	2,392.89	-99.91	206.99	295.75	1,087.59	0.87	14,566,222.33	1,771,501.38	N 40°6'26.98"	W 80°31'52.29"
	2,533.00	17.65	56.50	2,479.64	-106.19	221.61	319.03	1,174.34	0.93	14,566,236.94	1,771,524.65	N 40°6'27.12"	W 80°31'51.98"
	2,623.00	17.08	56.84	2,565.53	-112.87	236.37	341.47	1,260.23	0.64	14,566,251.70	1,771,547.08	N 40°6'27.27"	W 80°31'51.70"
	2,715.00	16.72	60.33	2,653.56	-118.67	250.31	364.28	1,348.26	1.17	14,566,265.63	1,771,569.89	N 40°6'27.40"	W 80°31'51.40"
	2,805.00	17.29	61.83	2,739.63	-123.23	263.03	387.32	1,434.33	0.80	14,566,278.35	1,771,592.92	N 40°6'27.53"	W 80°31'51.10"

RECEIVED
Office Of Oil and Gas
SEP 05 2024
WV Department of
Environmental Protection

2,896.00	18.95	63.77	2,826.11	-127.28	275.94	412.50	1,520.81	1.94	14,566,291.26	1,771,618.08	N 40°6'27.65"	W 80°31'50.78"
2,988.00	18.72	59.75	2,913.19	-132.09	289.99	438.65	1,607.89	1.43	14,566,305.29	1,771,644.23	N 40°6'27.79"	W 80°31'50.44"
3,082.00	17.86	55.67	3,002.44	-138.88	305.71	463.59	1,697.14	1.64	14,566,321.02	1,771,669.15	N 40°6'27.95"	W 80°31'50.12"
3,173.00	17.31	57.53	3,089.19	-145.76	320.85	486.54	1,783.89	0.86	14,566,336.15	1,771,692.09	N 40°6'28.09"	W 80°31'49.82"
3,264.00	16.02	60.75	3,176.37	-151.18	334.26	508.91	1,871.07	1.74	14,566,349.55	1,771,714.46	N 40°6'28.23"	W 80°31'49.53"
3,355.00	16.37	61.54	3,263.76	-155.56	346.50	531.14	1,958.46	0.45	14,566,361.79	1,771,736.68	N 40°6'28.35"	W 80°31'49.25"
3,445.00	17.33	65.12	3,349.90	-159.05	358.19	554.46	2,044.60	1.57	14,566,373.47	1,771,759.98	N 40°6'28.46"	W 80°31'48.95"
3,537.00	18.47	64.75	3,437.44	-162.08	370.17	580.07	2,132.14	1.25	14,566,385.45	1,771,785.59	N 40°6'28.58"	W 80°31'48.62"
3,628.00	19.84	64.59	3,523.40	-165.42	382.94	607.06	2,218.10	1.51	14,566,398.22	1,771,812.56	N 40°6'28.70"	W 80°31'48.27"
3,719.00	19.02	60.70	3,609.22	-169.84	396.83	633.94	2,303.92	1.68	14,566,412.10	1,771,839.44	N 40°6'28.84"	W 80°31'47.92"
3,810.00	17.90	56.99	3,695.54	-175.91	411.71	658.60	2,390.24	1.78	14,566,426.97	1,771,864.09	N 40°6'28.98"	W 80°31'47.60"
3,901.00	17.68	53.79	3,782.19	-183.42	427.49	681.47	2,476.89	1.10	14,566,442.74	1,771,886.96	N 40°6'29.14"	W 80°31'47.31"
3,991.00	18.21	53.74	3,867.81	-191.68	443.88	703.84	2,562.51	0.59	14,566,459.13	1,771,909.31	N 40°6'29.30"	W 80°31'47.02"
4,081.00	15.69	47.27	3,953.90	-200.78	460.46	724.12	2,648.60	3.49	14,566,475.70	1,771,929.59	N 40°6'29.46"	W 80°31'46.76"
4,174.00	16.07	45.68	4,043.35	-211.38	477.98	742.57	2,738.05	0.62	14,566,493.22	1,771,948.03	N 40°6'29.63"	W 80°31'46.52"
4,265.00	17.77	54.58	4,130.43	-220.73	494.83	762.90	2,825.13	3.40	14,566,510.07	1,771,968.35	N 40°6'29.80"	W 80°31'46.25"
4,356.00	18.21	60.10	4,216.98	-227.38	509.97	786.55	2,911.68	1.93	14,566,525.20	1,771,991.99	N 40°6'29.95"	W 80°31'45.95"
4,446.00	17.08	61.46	4,302.75	-232.27	523.30	810.35	2,997.45	1.34	14,566,538.52	1,772,015.78	N 40°6'30.08"	W 80°31'45.64"
4,537.00	16.63	59.06	4,389.84	-237.22	536.38	833.26	3,084.54	0.91	14,566,551.59	1,772,038.68	N 40°6'30.21"	W 80°31'45.35"
4,629.00	18.71	62.72	4,477.50	-242.10	549.91	857.67	3,172.20	2.56	14,566,565.12	1,772,063.08	N 40°6'30.34"	W 80°31'45.03"
4,719.00	18.71	63.09	4,562.74	-246.21	563.06	883.37	3,257.44	0.13	14,566,578.26	1,772,088.77	N 40°6'30.47"	W 80°31'44.70"
4,812.00	18.13	58.78	4,650.98	-251.36	577.31	909.05	3,345.68	1.59	14,566,592.51	1,772,114.44	N 40°6'30.61"	W 80°31'44.37"
4,903.00	18.38	60.77	4,737.40	-256.95	591.66	933.68	3,432.10	0.74	14,566,606.85	1,772,139.06	N 40°6'30.75"	W 80°31'44.05"
4,993.00	18.05	61.40	4,822.89	-261.83	605.26	958.30	3,517.59	0.43	14,566,620.45	1,772,163.67	N 40°6'30.88"	W 80°31'43.73"
5,087.00	18.78	58.17	4,912.08	-267.66	620.21	983.94	3,606.78	1.33	14,566,635.39	1,772,189.31	N 40°6'31.03"	W 80°31'43.40"
5,225.00	19.06	54.87	5,042.63	-278.92	644.89	1,021.24	3,737.33	0.80	14,566,660.07	1,772,226.59	N 40°6'31.27"	W 80°31'42.92"
5,316.00	18.96	56.03	5,128.67	-286.90	661.70	1,045.66	3,823.37	0.43	14,566,676.87	1,772,251.00	N 40°6'31.43"	W 80°31'42.60"
5,406.00	16.62	54.87	5,214.36	-294.29	677.28	1,068.31	3,909.06	2.63	14,566,692.44	1,772,273.64	N 40°6'31.59"	W 80°31'42.31"
5,496.00	16.70	54.96	5,300.58	-301.48	692.11	1,089.43	3,995.28	0.09	14,566,707.27	1,772,294.75	N 40°6'31.73"	W 80°31'42.04"
5,586.00	16.68	54.77	5,386.79	-308.69	706.99	1,110.56	4,081.49	0.06	14,566,722.14	1,772,315.88	N 40°6'31.88"	W 80°31'41.77"
5,677.00	17.76	55.66	5,473.71	-316.05	722.35	1,132.69	4,168.41	1.22	14,566,737.50	1,772,338.00	N 40°6'32.03"	W 80°31'41.48"
5,767.00	17.80	56.95	5,559.41	-323.06	737.60	1,155.56	4,254.11	0.44	14,566,752.74	1,772,360.86	N 40°6'32.18"	W 80°31'41.18"
5,858.00	17.78	56.40	5,646.06	-329.98	752.87	1,178.79	4,340.76	0.19	14,566,768.00	1,772,384.08	N 40°6'32.33"	W 80°31'40.88"
5,957.00	17.89	56.36	5,740.30	-337.67	769.66	1,204.04	4,435.00	0.11	14,566,784.79	1,772,409.32	N 40°6'32.49"	W 80°31'40.56"
6,052.00	17.68	55.51	5,830.76	-345.25	785.91	1,228.08	4,525.46	0.35	14,566,801.03	1,772,433.35	N 40°6'32.65"	W 80°31'40.25"
6,148.00	17.55	71.54	5,922.31	-349.05	798.76	1,253.83	4,617.01	5.04	14,566,813.87	1,772,459.10	N 40°6'32.78"	W 80°31'39.91"
6,243.00	17.88	91.77	6,012.89	-343.78	802.85	1,282.02	4,707.59	6.46	14,566,817.96	1,772,487.28	N 40°6'32.82"	W 80°31'39.55"
6,338.00	20.38	108.63	6,102.71	-328.53	797.11	1,312.30	4,797.41	6.36	14,566,812.22	1,772,517.54	N 40°6'32.76"	W 80°31'39.16"
6,434.00	28.25	122.62	6,190.20	-300.48	779.48	1,347.36	4,884.90	10.11	14,566,794.60	1,772,552.59	N 40°6'32.58"	W 80°31'38.71"
6,529.00	35.52	134.41	6,270.89	-258.12	747.97	1,386.10	4,965.59	10.05	14,566,763.11	1,772,591.31	N 40°6'32.27"	W 80°31'38.22"
6,625.00	43.21	145.33	6,345.14	-201.42	701.30	1,424.82	5,039.84	10.76	14,566,716.45	1,772,630.02	N 40°6'31.81"	W 80°31'37.72"
6,720.00	50.75	151.39	6,409.94	-133.72	642.15	1,461.01	5,104.64	9.20	14,566,657.32	1,772,666.19	N 40°6'31.22"	W 80°31'37.26"
6,815.00	60.32	157.65	6,463.67	-56.04	571.47	1,494.42	5,158.37	11.44	14,566,586.68	1,772,699.58	N 40°6'30.52"	W 80°31'36.83"
6,910.00	70.88	162.26	6,502.88	30.31	490.30	1,523.88	5,197.58	11.96	14,566,505.53	1,772,729.04	N 40°6'29.71"	W 80°31'36.46"
7,006.00	79.90	161.51	6,527.07	123.10	402.10	1,552.74	5,221.77	9.43	14,566,417.37	1,772,757.89	N 40°6'28.84"	W 80°31'36.10"
7,101.00	81.55	160.58	6,542.38	216.85	313.43	1,583.20	5,237.08	1.99	14,566,328.73	1,772,788.34	N 40°6'27.96"	W 80°31'35.71"

RECEIVED
Office Of Oil and Gas
SEP 05 2024
WV Department of
Environmental Protection

7,196.00	86,28	158,46	6,552.45	311,25	224,97	1,616.25	5,247.15	5,45	14,566,240.30	1,772,821.37	N 40°6'27.09"	W 80°31'35.29"
7,291.00	89.58	165.35	6,555.89	406.11	134.79	1,645.71	5,250.59	8.04	14,566,150.16	1,772,850.82	N 40°6'26.20"	W 80°31'34.92"
7,387.00	89.02	167.77	6,557.06	501.65	41.44	1,668.02	5,251.76	2.59	14,566,056.84	1,772,873.12	N 40°6'25.27"	W 80°31'34.64"
7,482.00	88,77	168,68	6,558.89	595.90	-51,55	1,687.40	5,253.59	0,99	14,565,963.89	1,772,892,50	N 40°6'24.35"	W 80°31'34.39"
7,578.00	88,96	168,20	6,560.79	691.09	-145,58	1,706.63	5,255.49	0,54	14,565,869.89	1,772,911.72	N 40°6'23.42"	W 80°31'34.15"
7,673.00	88,76	168,64	6,562.68	785.29	-238,63	1,725.70	5,257.38	0,51	14,565,776.88	1,772,930.78	N 40°6'22.50"	W 80°31'33,91"
7,768.00	89,57	168,50	6,564.07	879.47	-331,73	1,744.52	5,258.77	0,87	14,565,683.81	1,772,949.60	N 40°6'21.58"	W 80°31'33,68"
7,863.00	88,55	166,89	6,565.63	973.82	-424,54	1,764.77	5,260.33	2,01	14,565,591.05	1,772,969,83	N 40°6'20.66"	W 80°31'33,42"
7,958.00	89,24	169,11	6,567.46	1,068,10	-517,44	1,784.51	5,262.16	2,45	14,565,498.18	1,772,989,57	N 40°6'19.74"	W 80°31'33,18"
8,054.00	89,25	167,08	6,568.72	1,163,37	-611,36	1,804,31	5,263,42	2,11	14,565,404,30	1,773,009,36	N 40°6'18,81"	W 80°31'32,93"
8,149.00	88,55	165,56	6,570,55	1,257,95	-703,64	1,826,78	5,265,25	1,76	14,565,312,05	1,773,031,82	N 40°6'17,90"	W 80°31'32,64"
8,244.00	89,23	167,92	6,572,39	1,352,47	-796,09	1,848,56	5,267,09	2,58	14,565,219,64	1,773,053,59	N 40°6'16,99"	W 80°31'32,37"
8,340.00	88,94	163,19	6,573,92	1,448,13	-889,01	1,872,50	5,268,62	4,94	14,565,126,75	1,773,077,52	N 40°6'16,07"	W 80°31'32,07"
8,435.00	89,17	164,46	6,575,49	1,543,01	-980,24	1,898,96	5,270,19	1,36	14,565,035,56	1,773,103,97	N 40°6'15,16"	W 80°31'31,73"
8,530.00	88,94	167,49	6,577,06	1,637,64	-1,072,38	1,921,97	5,271,76	3,20	14,564,943,45	1,773,126,98	N 40°6'14,25"	W 80°31'31,44"
8,626.00	89,29	166,25	6,578,54	1,733,14	-1,165,86	1,943,78	5,273,24	1,34	14,564,850,01	1,773,148,78	N 40°6'13,33"	W 80°31'31,17"
8,721.00	88,92	164,20	6,580,02	1,827,87	-1,257,70	1,968,00	5,274,72	2,19	14,564,758,20	1,773,172,99	N 40°6'12,42"	W 80°31'30,86"
8,816.00	88,64	162,88	6,582,05	1,922,76	-1,348,79	1,994,91	5,276,75	1,42	14,564,667,15	1,773,199,89	N 40°6'11,52"	W 80°31'30,52"
8,911.00	89,09	165,44	6,583,93	2,017,60	-1,440,15	2,020,84	5,278,63	2,74	14,564,575,82	1,773,225,80	N 40°6'10,61"	W 80°31'30,20"
9,007.00	89,75	167,80	6,584,90	2,113,13	-1,533,53	2,043,05	5,279,60	2,55	14,564,482,47	1,773,248,01	N 40°6'9,69"	W 80°31'29,92"
9,102.00	88,43	165,63	6,586,41	2,207,66	-1,625,97	2,064,87	5,281,11	2,67	14,564,390,07	1,773,269,82	N 40°6'8,77"	W 80°31'29,64"

9,197.00	88,81	166,22	6,588,70	2,302,29	-1,718,09	2,087,97	5,283,40	0,74	14,564,297,98	1,773,292,91	N 40°6'7,86"	W 80°31'29,35"
9,292.00	89,35	166,72	6,590,22	2,396,86	-1,810,44	2,110,19	5,284,92	0,77	14,564,205,67	1,773,315,13	N 40°6'6,95"	W 80°31'29,07"
9,388.00	89,80	165,08	6,590,93	2,492,51	-1,903,55	2,133,58	5,285,63	1,77	14,564,112,60	1,773,338,50	N 40°6'6,03"	W 80°31'28,78"
9,483.00	89,13	164,91	6,591,82	2,587,28	-1,995,30	2,158,17	5,286,52	0,73	14,564,020,88	1,773,363,09	N 40°6'5,12"	W 80°31'28,47"
9,579.00	89,42	164,77	6,593,04	2,683,07	-2,087,95	2,183,28	5,287,74	0,34	14,563,928,26	1,773,388,18	N 40°6'4,20"	W 80°31'28,15"
9,674.00	89,47	165,41	6,593,96	2,777,83	-2,179,75	2,207,72	5,288,66	0,68	14,563,836,50	1,773,412,61	N 40°6'3,29"	W 80°31'27,84"
9,769.00	89,36	166,00	6,594,93	2,872,52	-2,271,80	2,231,17	5,289,63	0,63	14,563,744,48	1,773,436,06	N 40°6'2,38"	W 80°31'27,55"
9,865.00	89,48	168,98	6,595,90	2,967,90	-2,365,51	2,251,96	5,290,60	3,11	14,563,650,81	1,773,456,84	N 40°6'1,46"	W 80°31'27,29"
9,960.00	89,43	170,63	6,596,80	3,061,79	-2,459,00	2,268,78	5,291,50	1,74	14,563,557,36	1,773,473,65	N 40°6'0,53"	W 80°31'27,08"
10,055.00	89,00	171,08	6,598,10	3,155,41	-2,552,79	2,283,88	5,292,80	0,66	14,563,463,61	1,773,488,74	N 40°5'59,60"	W 80°31'26,89"
10,151.00	89,12	166,82	6,599,68	3,250,47	-2,646,97	2,302,27	5,294,38	4,44	14,563,369,46	1,773,507,13	N 40°5'58,67"	W 80°31'26,66"
10,246.00	90,05	164,02	6,600,37	3,345,18	-2,738,90	2,326,18	5,295,07	3,11	14,563,277,57	1,773,531,03	N 40°5'57,76"	W 80°31'26,36"
10,341.00	90,26	163,00	6,600,11	3,440,09	-2,829,99	2,353,15	5,294,81	1,10	14,563,186,51	1,773,557,99	N 40°5'56,86"	W 80°31'26,02"
10,437.00	90,73	162,59	6,599,28	3,536,05	-2,921,69	2,381,54	5,293,98	0,65	14,563,094,85	1,773,586,37	N 40°5'55,95"	W 80°31'25,66"
10,532.00	89,48	162,51	6,599,11	3,631,01	-3,012,32	2,410,03	5,293,81	1,32	14,563,004,26	1,773,614,85	N 40°5'55,06"	W 80°31'25,30"
10,627.00	89,47	161,68	6,599,98	3,725,99	-3,102,71	2,439,23	5,294,68	0,87	14,562,913,90	1,773,644,04	N 40°5'54,16"	W 80°31'24,93"
10,722.00	89,58	161,93	6,600,76	3,820,98	-3,192,96	2,468,90	5,295,46	0,29	14,562,823,68	1,773,673,69	N 40°5'53,27"	W 80°31'24,55"
10,818.00	89,18	160,89	6,601,80	3,916,97	-3,283,94	2,499,50	5,296,50	1,16	14,562,732,73	1,773,704,28	N 40°5'52,37"	W 80°31'24,16"
10,913.00	89,44	162,55	6,602,95	4,011,96	-3,374,14	2,529,29	5,297,65	1,77	14,562,642,57	1,773,734,07	N 40°5'51,47"	W 80°31'23,79"
11,008.00	89,42	163,66	6,603,89	4,106,89	-3,465,03	2,556,90	5,298,59	1,17	14,562,551,71	1,773,761,66	N 40°5'50,57"	W 80°31'23,44"
11,104.00	89,18	162,73	6,605,07	4,202,82	-3,556,92	2,584,65	5,299,77	1,00	14,562,459,86	1,773,789,40	N 40°5'49,66"	W 80°31'23,09"

RECEIVED
Office Of Oil and Gas
SEP 05 2024
WV Department of
Environmental Protection

11,199.00	89.51	161.64	6,606.15	4,297.79	-3,647.36	2,613.71	5,300.85	1.20	14,562,369.45	1,773,818.46	N 40°5'48.77"	W 80°31'22.72"
11,294.00	89.52	158.69	6,606.96	4,392.77	-3,736.71	2,645.94	5,301.66	3.11	14,562,280.14	1,773,850.67	N 40°5'47.88"	W 80°31'22.31"
11,389.00	88.90	156.94	6,608.27	4,487.60	-3,824.67	2,681.81	5,302.97	1.95	14,562,192.21	1,773,886.53	N 40°5'47.01"	W 80°31'21.86"
11,485.00	89.54	156.54	6,609.57	4,583.32	-3,912.86	2,719.72	5,304.27	0.79	14,562,104.06	1,773,924.42	N 40°5'46.14"	W 80°31'21.37"
11,580.00	89.43	158.15	6,610.43	4,678.11	-4,000.52	2,756.31	5,305.13	1.70	14,562,016.43	1,773,960.99	N 40°5'45.27"	W 80°31'20.91"
11,675.00	89.77	159.17	6,611.09	4,773.02	-4,089.00	2,790.88	5,305.79	1.13	14,561,927.98	1,773,995.55	N 40°5'44.40"	W 80°31'20.47"
11,771.00	89.46	160.91	6,611.74	4,869.00	-4,179.23	2,823.65	5,306.44	1.84	14,561,837.79	1,774,028.31	N 40°5'43.50"	W 80°31'20.06"
11,866.00	89.01	161.50	6,613.00	4,963.99	-4,269.16	2,854.25	5,307.70	0.78	14,561,747.90	1,774,058.90	N 40°5'42.61"	W 80°31'19.67"
11,962.00	89.45	161.96	6,614.29	5,059.97	-4,360.31	2,884.34	5,308.99	0.66	14,561,656.78	1,774,088.98	N 40°5'41.71"	W 80°31'19.29"
12,057.00	89.52	160.32	6,615.15	5,154.96	-4,450.20	2,915.05	5,309.85	1.73	14,561,566.92	1,774,119.68	N 40°5'40.82"	W 80°31'18.90"
12,152.00	89.20	159.30	6,616.21	5,249.93	-4,539.36	2,947.84	5,310.91	1.13	14,561,477.80	1,774,152.45	N 40°5'39.94"	W 80°31'18.48"
12,248.00	89.21	159.47	6,617.54	5,345.88	-4,629.20	2,981.63	5,312.24	0.18	14,561,387.99	1,774,186.23	N 40°5'39.05"	W 80°31'18.05"
12,343.00	89.16	160.78	6,618.89	5,440.86	-4,718.53	3,013.93	5,313.59	1.38	14,561,298.69	1,774,218.51	N 40°5'38.16"	W 80°31'17.64"
12,439.00	89.17	160.21	6,620.29	5,536.84	-4,809.01	3,045.98	5,314.99	0.59	14,561,208.25	1,774,250.55	N 40°5'37.27"	W 80°31'17.24"
12,534.00	89.08	159.15	6,621.74	5,631.80	-4,898.09	3,078.96	5,316.44	1.12	14,561,119.20	1,774,283.52	N 40°5'36.38"	W 80°31'16.82"
12,629.00	89.25	159.51	6,623.13	5,726.75	-4,986.96	3,112.49	5,317.83	0.42	14,561,030.36	1,774,317.04	N 40°5'35.50"	W 80°31'16.39"
12,725.00	89.38	159.66	6,624.27	5,822.71	-5,076.93	3,145.97	5,318.97	0.21	14,560,940.43	1,774,350.51	N 40°5'34.61"	W 80°31'15.97"
12,821.00	89.23	160.33	6,625.44	5,918.68	-5,167.13	3,178.81	5,320.14	0.72	14,560,850.27	1,774,383.34	N 40°5'33.72"	W 80°31'15.55"
12,916.00	89.29	160.55	6,626.67	6,013.67	-5,256.64	3,210.62	5,321.37	0.24	14,560,760.79	1,774,415.13	N 40°5'32.83"	W 80°31'15.15"
13,012.00	88.91	161.88	6,628.17	6,109.65	-5,347.51	3,241.53	5,322.87	1.44	14,560,669.95	1,774,446.03	N 40°5'31.93"	W 80°31'14.76"
13,108.00	88.68	157.93	6,630.19	6,205.59	-5,437.63	3,274.50	5,324.89	4.12	14,560,579.87	1,774,478.98	N 40°5'31.04"	W 80°31'14.34"
13,204.00	89.32	158.22	6,631.87	6,301.45	-5,526.67	3,310.34	5,326.57	0.73	14,560,490.86	1,774,514.81	N 40°5'30.16"	W 80°31'13.89"
13,300.00	88.79	158.72	6,633.45	6,397.33	-5,615.96	3,345.56	5,328.15	0.76	14,560,401.61	1,774,550.02	N 40°5'29.28"	W 80°31'13.44"
13,395.00	89.25	157.71	6,635.08	6,492.20	-5,704.16	3,380.81	5,329.78	1.17	14,560,313.44	1,774,585.26	N 40°5'28.40"	W 80°31'12.99"
13,491.00	89.00	157.94	6,636.54	6,588.03	-5,793.05	3,417.04	5,331.24	0.35	14,560,224.58	1,774,621.48	N 40°5'27.52"	W 80°31'12.53"
13,586.00	89.33	157.80	6,637.93	6,682.87	-5,881.04	3,452.83	5,332.63	0.38	14,560,136.63	1,774,657.25	N 40°5'26.65"	W 80°31'12.08"
13,681.00	89.29	157.98	6,639.07	6,777.72	-5,969.05	3,488.58	5,333.77	0.19	14,560,048.65	1,774,692.99	N 40°5'25.78"	W 80°31'11.62"
13,777.00	88.95	157.81	6,640.55	6,873.56	-6,057.98	3,524.70	5,335.25	0.40	14,559,959.75	1,774,729.09	N 40°5'24.90"	W 80°31'11.17"
13,872.00	89.05	157.45	6,642.20	6,968.37	-6,145.82	3,560.85	5,336.90	0.39	14,559,871.95	1,774,765.23	N 40°5'24.03"	W 80°31'10.71"
13,968.00	88.76	158.63	6,644.04	7,064.22	-6,234.84	3,596.74	5,338.74	1.27	14,559,782.97	1,774,801.11	N 40°5'23.15"	W 80°31'10.25"
14,063.00	89.34	158.83	6,645.61	7,159.13	-6,323.35	3,631.20	5,340.31	0.65	14,559,694.48	1,774,835.55	N 40°5'22.27"	W 80°31'9.81"
14,158.00	89.22	159.14	6,646.81	7,254.05	-6,412.03	3,665.27	5,341.51	0.35	14,559,605.84	1,774,869.61	N 40°5'21.39"	W 80°31'9.38"
14,253.00	89.55	157.47	6,647.83	7,348.93	-6,500.29	3,700.38	5,342.53	1.79	14,559,517.62	1,774,904.71	N 40°5'20.52"	W 80°31'8.94"
14,348.00	88.78	156.97	6,649.21	7,443.71	-6,587.87	3,737.16	5,343.91	0.97	14,559,430.07	1,774,941.47	N 40°5'19.65"	W 80°31'8.47"
14,444.00	90.05	156.94	6,650.19	7,539.45	-6,676.20	3,774.74	5,344.89	1.32	14,559,341.77	1,774,979.04	N 40°5'18.78"	W 80°31'7.99"
14,539.00	89.90	156.97	6,650.23	7,634.21	-6,763.62	3,811.93	5,344.93	0.16	14,559,254.39	1,775,016.21	N 40°5'17.91"	W 80°31'7.52"
14,634.00	89.86	158.60	6,650.43	7,729.04	-6,851.57	3,847.84	5,345.13	1.72	14,559,166.47	1,775,052.11	N 40°5'17.04"	W 80°31'7.06"
14,729.00	89.68	158.08	6,650.81	7,823.94	-6,939.86	3,882.91	5,345.51	0.58	14,559,078.22	1,775,087.16	N 40°5'16.16"	W 80°31'6.62"
14,825.00	90.04	157.03	6,651.05	7,919.75	-7,028.58	3,919.56	5,345.75	1.16	14,558,989.53	1,775,123.80	N 40°5'15.29"	W 80°31'6.15"
14,920.00	90.08	157.14	6,650.95	8,014.52	-7,116.09	3,956.55	5,345.65	0.12	14,558,902.06	1,775,160.78	N 40°5'14.42"	W 80°31'5.68"
15,016.00	89.58	157.70	6,651.23	8,110.32	-7,204.73	3,993.41	5,345.93	0.78	14,558,813.45	1,775,197.62	N 40°5'13.54"	W 80°31'5.21"
15,111.00	89.07	158.90	6,652.35	8,205.20	-7,292.99	4,028.53	5,347.05	1.37	14,558,725.22	1,775,232.73	N 40°5'12.67"	W 80°31'4.77"
15,206.00	89.44	158.09	6,653.59	8,300.10	-7,381.36	4,063.35	5,348.29	0.94	14,558,636.88	1,775,267.54	N 40°5'11.79"	W 80°31'4.33"
15,301.00	89.54	158.20	6,654.43	8,394.97	-7,469.53	4,098.72	5,349.13	0.16	14,558,548.74	1,775,302.89	N 40°5'10.92"	W 80°31'3.88"
15,397.00	89.27	158.65	6,655.43	8,490.86	-7,558.80	4,134.02	5,350.13	0.55	14,558,459.51	1,775,338.18	N 40°5'10.03"	W 80°31'3.43"
15,492.00	88.77	158.35	6,657.05	8,585.75	-7,647.18	4,168.83	5,351.75	0.61	14,558,371.17	1,775,372.97	N 40°5'9.16"	W 80°31'2.99"
15,587.00	89.49	157.27	6,658.50	8,680.58	-7,735.13	4,204.70	5,353.20	1.37	14,558,283.25	1,775,408.84	N 40°5'8.29"	W 80°31'2.53"
15,682.00	89.23	157.87	6,659.56	8,775.40	-7,822.94	4,240.95	5,354.26	0.69	14,558,195.48	1,775,445.07	N 40°5'7.42"	W 80°31'2.07"
15,777.00	89.83	157.20	6,660.34	8,870.21	-7,910.72	4,277.25	5,355.04	0.95	14,558,107.72	1,775,481.35	N 40°5'6.55"	W 80°31'1.61"
15,873.00	89.32	157.04	6,661.05	8,965.98	-7,999.17	4,314.57	5,355.75	0.56	14,558,019.31	1,775,518.66	N 40°5'5.67"	W 80°31'1.14"
15,968.00	89.06	158.00	6,662.39	9,060.79	-8,086.94	4,350.89	5,357.09	1.05	14,557,931.57	1,775,554.97	N 40°5'4.80"	W 80°31'0.68"
16,063.00	89.35	157.79	6,663.71	9,155.63	-8,174.95	4,386.64	5,358.41	0.38	14,557,843.60	1,775,590.70	N 40°5'3.93"	W 80°31'0.22"
16,158.00	89.52	158.28	6,664.65	9,250.49	-8,263.05	4,422.17	5,359.35	0.55	14,557,755.53	1,775,626.22	N 40°5'3.06"	W 80°30'59.77"
16,253.00	89.41	158.20	6,665.53	9,345.37	-8,351.27	4,457.39	5,360.23	0.14	14,557,667.34	1,775,661.42	N 40°5'2.19"	W 80°30'59.33"

RECEIVED
Office Of Oil and Gas
SEP 05 2024
WV Department of
Environmental Protection

16,350.00	89.42	158.56	6,666.53	9,442.26	-8,441.44	4,493.12	5,361.23	0.37	14,557,577.20	1,775,697.15	N 40°5'1.29"	W 80°30'58.87"
16,445.00	89.98	158.16	6,667.02	9,537.15	-8,529.75	4,528.16	5,361.72	0.72	14,557,488.93	1,775,732.17	N 40°5'0.42"	W 80°30'58.43"
16,540.00	89.48	159.16	6,667.47	9,632.06	-8,618.23	4,562.73	5,362.17	1.18	14,557,400.48	1,775,766.72	N 40°4'59.54"	W 80°30'57.99"
16,635.00	89.34	159.29	6,668.45	9,727.01	-8,707.05	4,596.42	5,363.15	0.20	14,557,311.70	1,775,800.40	N 40°4'58.66"	W 80°30'57.56"
16,731.00	89.08	159.03	6,669.77	9,822.94	-8,796.76	4,630.57	5,364.47	0.38	14,557,222.02	1,775,834.54	N 40°4'57.77"	W 80°30'57.13"
16,826.00	89.44	157.73	6,671.00	9,917.83	-8,885.07	4,665.57	5,365.70	1.42	14,557,133.75	1,775,869.53	N 40°4'56.90"	W 80°30'56.68"
16,921.00	89.15	158.47	6,672.17	10,012.69	-8,973.20	4,701.00	5,366.87	0.84	14,557,045.65	1,775,904.94	N 40°4'56.03"	W 80°30'56.23"
17,017.00	89.32	158.76	6,673.45	10,108.59	-9,062.59	4,736.00	5,368.15	0.35	14,556,956.30	1,775,939.93	N 40°4'55.14"	W 80°30'55.79"
17,112.00	89.18	159.53	6,674.69	10,203.53	-9,151.35	4,769.82	5,369.39	0.82	14,556,867.56	1,775,973.74	N 40°4'54.26"	W 80°30'55.36"
17,207.00	89.49	157.81	6,675.80	10,298.44	-9,239.84	4,804.37	5,370.50	1.84	14,556,779.12	1,776,008.27	N 40°4'53.39"	W 80°30'54.92"
17,302.00	89.46	158.38	6,676.67	10,393.30	-9,327.98	4,839.81	5,371.37	0.60	14,556,691.01	1,776,043.70	N 40°4'52.51"	W 80°30'54.47"
17,397.00	89.30	158.29	6,677.69	10,488.19	-9,416.26	4,874.88	5,372.39	0.19	14,556,602.76	1,776,078.76	N 40°4'51.64"	W 80°30'54.03"
17,493.00	89.22	158.14	6,678.93	10,584.06	-9,505.40	4,910.51	5,373.63	0.18	14,556,513.66	1,776,114.37	N 40°4'50.76"	W 80°30'53.58"
17,588.00	89.29	158.58	6,680.17	10,678.94	-9,593.69	4,945.54	5,374.87	0.47	14,556,425.40	1,776,149.39	N 40°4'49.88"	W 80°30'53.13"
17,683.00	89.72	158.37	6,680.99	10,773.84	-9,682.06	4,980.39	5,375.69	0.50	14,556,337.06	1,776,184.23	N 40°4'49.01"	W 80°30'52.69"
17,778.00	89.38	158.83	6,681.74	10,868.75	-9,770.51	5,015.05	5,376.44	0.60	14,556,248.65	1,776,218.88	N 40°4'48.13"	W 80°30'52.25"
17,873.00	89.04	158.04	6,683.05	10,963.64	-9,858.85	5,049.97	5,377.75	0.91	14,556,160.34	1,776,253.78	N 40°4'47.26"	W 80°30'51.81"
17,969.00	89.25	158.28	6,684.48	11,059.50	-9,947.95	5,085.68	5,379.18	0.33	14,556,071.27	1,776,289.47	N 40°4'46.37"	W 80°30'51.35"
18,064.00	89.23	158.40	6,685.74	11,154.39	-10,036.24	5,120.74	5,380.44	0.13	14,555,983.02	1,776,324.52	N 40°4'45.50"	W 80°30'50.91"
18,159.00	88.97	159.28	6,687.23	11,249.30	-10,124.82	5,155.03	5,381.93	0.97	14,555,894.47	1,776,358.80	N 40°4'44.62"	W 80°30'50.47"
18,254.00	89.12	158.82	6,688.81	11,344.23	-10,213.53	5,188.99	5,383.51	0.51	14,555,805.80	1,776,392.75	N 40°4'43.74"	W 80°30'50.04"
18,350.00	89.41	158.62	6,690.05	11,440.14	-10,302.97	5,223.83	5,384.75	0.37	14,555,716.39	1,776,427.57	N 40°4'42.86"	W 80°30'49.60"
18,445.00	89.32	158.53	6,691.10	11,535.04	-10,391.40	5,258.53	5,385.80	0.13	14,555,627.99	1,776,462.26	N 40°4'41.98"	W 80°30'49.16"
18,541.00	88.99	158.39	6,692.51	11,630.93	-10,480.69	5,293.77	5,387.21	0.37	14,555,538.74	1,776,497.49	N 40°4'41.10"	W 80°30'48.72"
18,600.00	89.07	158.53	6,693.51	11,689.86	-10,535.56	5,315.43	5,388.21	0.27	14,555,483.89	1,776,519.14	N 40°4'40.55"	W 80°30'48.44"

RECEIVED
Office Of Oil and Gas

SEP 05 2024

WV Department of
Environmental Protection