



SWN PRODUCTION COMPANY, LLC



Location: Ohio County, WV
 Field: Ohio
 Facility: Roy Riggle OHI Pad

Slot: 1H
 Well: Roy Riggle OHI 1H
 Wellbore: Roy Riggle OHI 1H AWB

Plot reference wellpath is Roy Riggle OHI 1H awp Proj: 18395	Grid System: NAD83 / UTM Zone 17 North, US feet
True vertical depths are referenced to SDC 40 (KB)	North Reference: Grid north
Reference wellpath measured depths are referenced to SDC 40 (KB)	Scale: True distance
SDC 40 (KB) to Mean Sea Level: 1277.8 feet	Coordinates are in feet referenced to Slot
Mean Sea Level to Ground level (At Slot: 1H): -1252.3 feet	Depths are in feet
Offset wellpath MDs are referenced to each path's default MD datum	Created by: tranlam on 2023-11-28; Database: WA_MPL_EASTERNU Defn

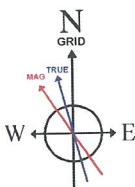
Location Information

Facility Name			Grid East (US ft)	Grid North (US ft)	Latitude	Longitude
Roy Riggle OHI Pad			1773447.520	14582274.947	40°09'5.5690"N	80°31'26.1230"W
Slot	Local N (ft)	Local E (ft)	Grid East (US ft)	Grid North (US ft)	Latitude	Longitude
1H	19.59	-10.17	1773437.350	14582294.530	40°09'5.7631"N	80°31'26.2527"W
SDC 40 (KB) to Ground level (At Slot: 1H)					25.5ft	
Mean Sea Level to Ground level (At Slot: 1H)					-1252.3ft	
SDC 40 (KB) to Mean Sea Level					1277.8ft	

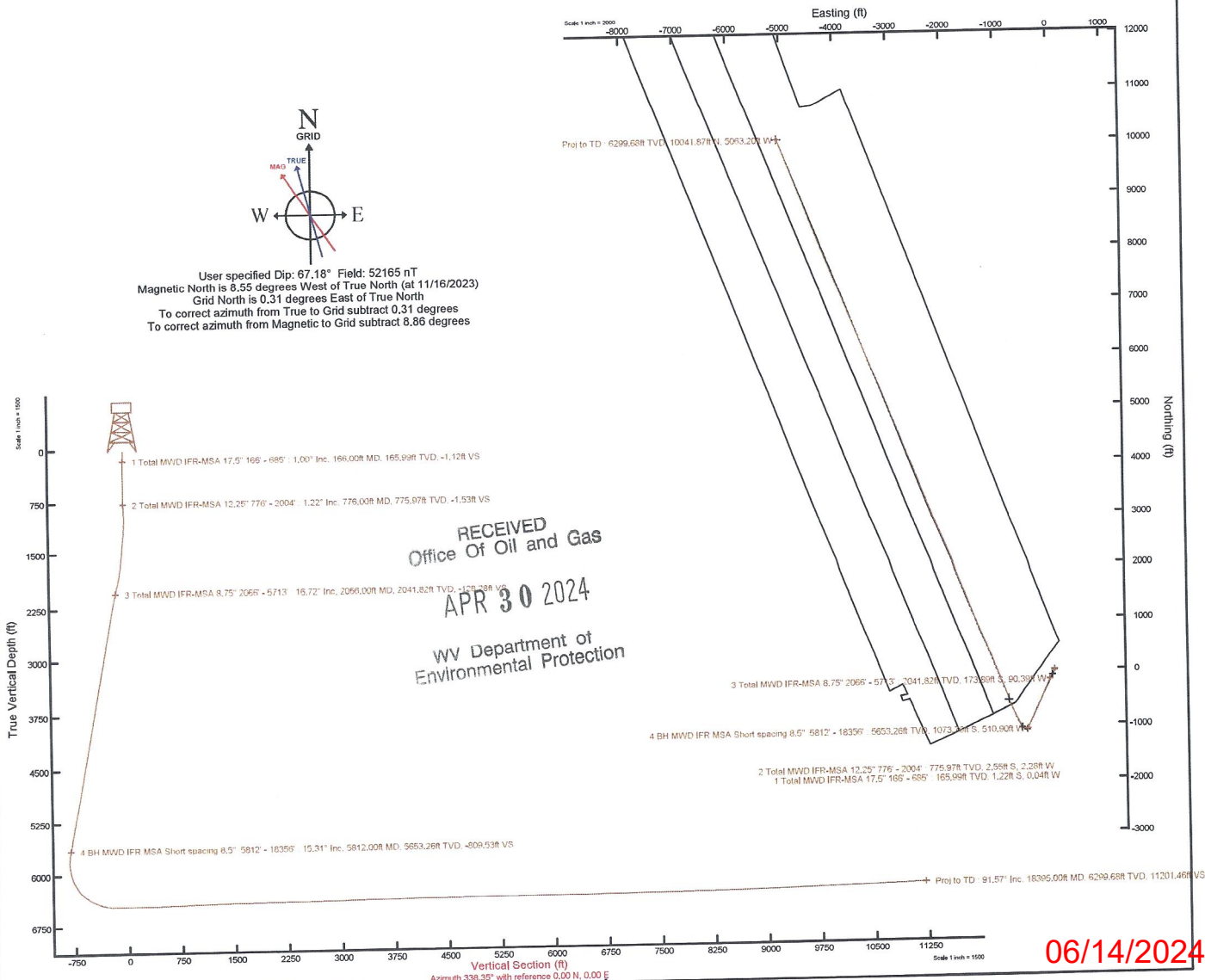
Bottom Hole Location

MD (ft)	Inc (°)	Az (°)	TVD (ft)	Local N (ft)	Local E (ft)	Grid East (US ft)	Grid North (US ft)	Latitude	Longitude
18395.00	91.570	338.580	6299.88	10041.87	-5063.20	1768376.09	14592332.57	40°10'45.2591"N	80°32'30.7896"W

API: 47069003620000
 BH JOB: 112037082
 DURATION: 11/22/2023 - 11/26/2023
 RIG: SDC 40



User specified Dip: 67.18° Field: 52165 nT
 Magnetic North is 8.55 degrees West of True North (at 11/16/2023)
 Grid North is 0.31 degrees East of True North
 To correct azimuth from True to Grid subtract 0.31 degrees
 To correct azimuth from Magnetic to Grid subtract 8.86 degrees



RECEIVED
 Office Of Oil and Gas
 APR 30 2024
 WV Department of
 Environmental Protection

06/14/2024

REFERENCE WELLPATH IDENTIFICATION

Operator	SWN PRODUCTION COMPANY, LLC	Well	Roy Riggle OHI 1H
Field	Ohio	API	47069003620000
Facility	Roy Riggle OHI Pad	Wellbore	Roy Riggle OHI 1H AWB
Slot	1H		

REPORT SETUP INFORMATION

Projection System	NAD83 / UTM Zone 17 North, US feet	Software System	WellArchitect® 6.0
North Reference	Grid	User	Tranlam
Scale	0.999620	Report Generated	11/28/2023 at 11:31:42 AM
Convergence at slot	0.31° East	Database	WA_MPL_EASTERNUS_Defn

WELLPATH LOCATION

	Local coordinates		Grid coordinates		Geographic coordinates	
	North[ft]	East[ft]	Easting[US ft]	Northing[US ft]	Latitude	Longitude
Slot Location	19.59	-10.17	1773437.35	14582294.53	40°09'5.7631"N	80°31'26.2527"W
Facility Reference Pt			1773447.52	14582274.95	40°09'5.5690"N	80°31'26.1230"W
Field Reference Pt			0.00	0.00	0°00'0.0000"	85°29'19.4780"W

WELLPATH DATUM

Calculation method	Minimum curvature	SDC 40 (KB) to Facility Vertical Datum	1277.80ft
Horizontal Reference Pt	Slot	SDC 40 (KB) to Mean Sea Level	1277.80ft
Vertical Reference Pt	SDC 40 (KB)	SDC 40 (KB) to Ground Level at Slot (1H)	25.50ft
MD Reference Pt	SDC 40 (KB)	Section Origin	N 0.00, E 0.00 ft
Field Vertical Reference	Mean Sea Level	Section Azimuth	338.35°

RECEIVED
Office Of Oil and Gas

APR 30 2024

WV Department of
Environmental Protection

06/14/2024

APR 30 2024

Actual Wellpath Report

Roy Riggle OHI 1H awp Proj: 18395'

Page 2 of 10



Southwestern Energy®



REFERENCE WELLPATH IDENTIFICATION

Operator	SWN PRODUCTION COMPANY, LLC	Well	Roy Riggle OHI 1H
Field	Ohio	API	47069003620000
Facility	Roy Riggle OHI Pad	Wellbore	Roy Riggle OHI 1H AWB
Slot	1H		

WELLPATH DATA (201 stations) † = interpolated, ‡ = extrapolated station

MD [ft]	Inclination [°]	Azimuth [°]	TVD [ft]	Vert Sect [ft]	North [ft]	East [ft]	Grid East [US ft]	Grid North [US ft]	Latitude	Longitude	Closure Dist [ft]	Closure Dir [°]	DLS [°/100ft]
0.00†	0.000	181.680	0.00	0.00	0.00	0.00	1773437.35	14582294.53	40°09'5.7631"N	80°31'26.2527"W	0.00	0.000	0.00
26.00	0.000	181.680	26.00	0.00	0.00	0.00	1773437.35	14582294.53	40°09'5.7631"N	80°31'26.2527"W	0.00	0.000	0.00
166.00	1.000	181.680	165.99	-1.12	-1.22	-0.04	1773437.31	14582293.31	40°09'5.7511"N	80°31'26.2532"W	1.22	181.680	0.71
234.00	0.800	219.200	233.99	-1.90	-2.18	-0.35	1773437.00	14582292.35	40°09'5.7416"N	80°31'26.2574"W	2.21	189.195	0.90
324.00	0.430	250.880	323.98	-2.19	-2.78	-1.07	1773436.28	14582291.75	40°09'5.7357"N	80°31'26.2666"W	2.98	201.043	0.54
414.00	0.050	215.340	413.98	-2.20	-2.92	-1.41	1773435.94	14582291.61	40°09'5.7343"N	80°31'26.2710"W	3.25	205.777	0.43
504.00	0.530	252.530	503.98	-2.19	-3.08	-1.83	1773435.52	14582291.45	40°09'5.7328"N	80°31'26.2765"W	3.58	210.736	0.55
594.00	0.280	205.970	593.98	-2.30	-3.40	-2.32	1773434.92	14582291.13	40°09'5.7296"N	80°31'26.2828"W	4.12	214.342	0.44
621.00	0.360	295.180	620.98	-2.29	-3.43	-2.43	1773434.92	14582291.11	40°09'5.7294"N	80°31'26.2842"W	4.20	215.354	1.68
685.00	0.170	134.550	684.97	-2.23	-3.41	-2.54	1773434.81	14582291.12	40°09'5.7296"N	80°31'26.2857"W	4.25	216.758	0.82
776.00	1.220	9.980	775.97	-1.53	-2.55	-2.28	1773435.07	14582291.98	40°09'5.7381"N	80°31'26.2822"W	3.42	221.838	1.45
868.00	1.580	19.300	867.94	0.27	-0.39	-1.69	1773435.66	14582294.14	40°09'5.7594"N	80°31'26.2745"W	1.73	257.169	0.46
961.00	0.840	22.530	960.92	1.72	1.45	-1.01	1773436.34	14582295.98	40°09'5.7776"N	80°31'26.2655"W	1.77	325.324	0.80
1053.00	0.750	192.860	1052.92	1.71	1.49	-0.88	1773436.47	14582296.02	40°09'5.7779"N	80°31'26.2639"W	1.73	329.387	1.72
1139.00	3.520	200.510	1138.85	-0.71	-1.53	-1.93	1773435.42	14582293.00	40°09'5.7481"N	80°31'26.2777"W	2.47	231.600	3.23
1231.00	5.650	194.730	1230.55	-6.45	-8.56	-4.07	1773433.28	14582285.98	40°09'5.6788"N	80°31'26.3057"W	9.48	205.456	2.37
1321.00	7.300	196.080	1319.97	-14.54	-18.34	-6.78	1773430.57	14582276.20	40°09'5.5823"N	80°31'26.3413"W	19.55	200.303	1.84
1412.00	8.840	194.870	1410.07	-24.73	-30.65	-10.18	1773427.17	14582263.89	40°09'5.4608"N	80°31'26.3859"W	32.30	198.373	1.70
1502.00	9.920	220.450	1498.90	-33.92	-43.24	-16.99	1773420.37	14582251.31	40°09'5.3367"N	80°31'26.4744"W	46.46	201.448	4.74
1594.00	12.090	214.410	1589.21	-43.01	-57.22	-27.57	1773409.79	14582237.33	40°09'5.1991"N	80°31'26.6117"W	63.52	205.729	2.67
1686.00	14.320	212.620	1678.77	-55.04	-74.76	-39.15	1773398.21	14582219.80	40°09'5.0265"N	80°31'26.7620"W	84.39	207.644	2.46
1776.00	16.950	213.360	1765.43	-69.06	-95.09	-52.37	1773385.00	14582199.48	40°09'4.8262"N	80°31'26.9337"W	108.56	208.844	2.93
1868.00	18.110	209.070	1853.16	-85.81	-118.79	-66.69	1773370.68	14582175.78	40°09'4.5928"N	80°31'27.1197"W	136.23	209.311	1.89
1959.00	18.220	203.460	1939.63	-104.80	-144.21	-79.23	1773358.15	14582150.38	40°09'4.3423"N	80°31'27.2829"W	164.54	208.786	1.93
2004.00	17.150	200.230	1982.51	-114.71	-156.88	-84.33	1773353.06	14582137.70	40°09'4.2173"N	80°31'27.3494"W	178.11	208.258	3.23
2066.00	16.720	199.000	2041.82	-128.28	-173.89	-90.39	1773346.99	14582120.71	40°09'4.0495"N	80°31'27.4287"W	195.98	207.465	0.90
2158.00	16.140	200.780	2130.06	-147.76	-198.36	-99.24	1773338.15	14582096.24	40°09'3.8082"N	80°31'27.5443"W	221.80	206.577	0.83
2248.00	16.140	206.620	2216.52	-165.32	-221.24	-109.28	1773328.11	14582073.37	40°09'3.5826"N	80°31'27.6752"W	246.76	206.286	1.80
2341.00	16.520	206.350	2305.77	-182.77	-244.65	-120.94	1773316.46	14582049.97	40°09'3.3519"N	80°31'27.8270"W	272.91	206.305	0.42
2432.00	14.870	203.050	2393.37	-199.73	-266.99	-131.26	1773306.14	14582027.64	40°09'3.1317"N	80°31'27.9614"W	297.51	206.179	2.06

REFERENCE WELLPATH IDENTIFICATION

Operator	SWN PRODUCTION COMPANY, LLC	Well	Roy Riggle OHI 1H
Field	Ohio	API	47069003620000
Facility	Roy Riggle OHI Pad	Wellbore	Roy Riggle OHI 1H AWB
Slot	1H		

WELLPATH DATA (201 stations)

MD [ft]	Inclination [°]	Azimuth [°]	TVD [ft]	Vert Sect [ft]	North [ft]	East [ft]	Grid East [US ft]	Grid North [US ft]	Latitude	Longitude	Closure Dist [ft]	Closure Dir [°]	DLS ["/100ft]
2522.00	14.900	200.670	2480.36	-216.49	-288.44	-139.86	1773297.54	14582006.20	40°09'2.9202"N	80°31'28.0737"W	320.56	205.868	0.68
2615.00	14.100	201.630	2570.39	-233.58	-310.16	-148.26	1773289.15	14581984.49	40°09'2.7060"N	80°31'28.1833"W	343.77	205.548	0.90
2708.00	14.300	206.000	2660.55	-249.57	-331.01	-157.47	1773279.94	14581963.64	40°09'2.5004"N	80°31'28.3033"W	366.56	205.441	1.17
2799.00	14.870	205.880	2748.62	-265.02	-351.62	-167.49	1773269.92	14581943.04	40°09'2.2973"N	80°31'28.4338"W	389.47	205.440	0.63
2891.00	13.570	202.970	2837.80	-280.68	-372.18	-176.86	1773260.56	14581922.49	40°09'2.0946"N	80°31'28.5559"W	412.06	205.417	1.61
2981.00	13.730	201.230	2925.26	-296.02	-391.86	-184.84	1773252.58	14581902.82	40°09'1.9006"N	80°31'28.6601"W	433.27	205.254	0.49
3071.00	13.860	205.490	3012.67	-311.18	-411.54	-193.35	1773244.07	14581883.14	40°09'1.7065"N	80°31'28.7710"W	454.70	205.165	1.14
3162.00	15.410	204.420	3100.71	-326.98	-432.39	-203.04	1773234.39	14581862.30	40°09'1.5010"N	80°31'28.8972"W	477.69	205.154	1.73
3253.00	15.870	203.560	3188.34	-344.13	-454.81	-213.01	1773224.42	14581839.90	40°09'1.2800"N	80°31'29.0272"W	502.22	205.097	0.57
3344.00	16.440	207.570	3275.75	-361.31	-477.63	-223.95	1773213.49	14581817.09	40°09'1.0551"N	80°31'29.1695"W	527.52	205.121	1.38
3434.00	16.500	207.470	3362.06	-377.99	-500.26	-235.74	1773201.70	14581794.47	40°09'0.8321"N	80°31'29.3229"W	553.02	205.231	0.07
3526.00	15.280	203.300	3450.54	-395.12	-522.98	-246.56	1773190.88	14581771.75	40°09'0.6081"N	80°31'29.4639"W	578.19	205.241	1.82
3616.00	14.950	201.190	3537.43	-412.03	-544.70	-255.45	1773182.00	14581750.04	40°09'0.3940"N	80°31'29.5798"W	601.62	205.125	0.71
3707.00	15.160	205.650	3625.31	-428.71	-566.37	-264.84	1773172.61	14581728.38	40°09'0.1803"N	80°31'29.7023"W	625.23	205.061	1.29
3798.00	15.380	205.250	3713.10	-445.02	-588.01	-275.14	1773162.32	14581706.74	40°08'59.9670"N	80°31'29.8364"W	649.20	205.076	0.27
3889.00	15.240	202.310	3800.87	-461.88	-609.99	-284.83	1773152.63	14581684.77	40°08'59.7503"N	80°31'29.9627"W	673.21	205.030	0.87
3983.00	14.370	204.720	3891.75	-478.82	-632.02	-294.39	1773143.07	14581662.75	40°08'59.5332"N	80°31'30.0874"W	697.22	204.976	1.13
4074.00	15.170	206.180	3979.74	-494.60	-652.96	-304.37	1773133.10	14581641.82	40°08'59.3267"N	80°31'30.2173"W	720.42	204.992	0.97
4166.00	15.060	205.120	4068.56	-510.87	-674.58	-314.76	1773122.71	14581620.20	40°08'59.1136"N	80°31'30.3525"W	744.40	205.013	0.32
4256.00	15.210	205.780	4155.44	-526.87	-695.80	-324.85	1773112.62	14581598.99	40°08'58.9044"N	80°31'30.4840"W	767.90	205.027	0.25
4346.00	16.120	205.300	4242.09	-543.38	-717.73	-335.33	1773102.15	14581577.07	40°08'58.6883"N	80°31'30.6204"W	792.20	205.042	1.02
4439.00	16.000	207.450	4331.46	-560.59	-740.78	-346.75	1773090.73	14581554.04	40°08'58.4612"N	80°31'30.7691"W	817.92	205.084	0.65
4529.00	15.470	206.040	4418.09	-576.79	-762.57	-357.74	1773079.75	14581532.25	40°08'58.2464"N	80°31'30.9121"W	842.31	205.133	0.73
4620.00	15.790	206.170	4505.73	-593.27	-784.58	-368.53	1773068.96	14581510.24	40°08'58.0294"N	80°31'31.0526"W	866.83	205.160	0.35
4710.00	16.130	208.210	4592.26	-609.55	-806.59	-379.84	1773057.66	14581488.25	40°08'57.8125"N	80°31'31.1997"W	891.55	205.217	0.73
4802.00	15.680	204.810	4680.74	-626.36	-829.14	-391.10	1773046.40	14581465.71	40°08'57.5903"N	80°31'31.3462"W	916.75	205.253	1.12
4895.00	15.150	205.770	4770.39	-643.24	-851.49	-401.65	1773035.85	14581443.36	40°08'57.3700"N	80°31'31.4837"W	941.47	205.254	0.63
4985.00	15.630	207.210	4857.16	-659.17	-872.86	-412.31	1773025.20	14581422.00	40°08'57.1594"N	80°31'31.6224"W	965.35	205.284	0.68
5076.00	16.290	206.260	4944.66	-675.79	-895.21	-423.56	1773013.95	14581399.66	40°08'56.9391"N	80°31'31.7689"W	990.36	205.321	0.78
5168.00	16.260	207.700	5032.97	-692.83	-918.19	-435.26	1773002.26	14581376.69	40°08'56.7127"N	80°31'31.9211"W	1016.13	205.363	0.44

Actual Wellpath Report

Roy Riggle OHI 1H awp Proj: 18395'

Page 4 of 10

RECEIVED
Office Of Oil and Gas

APR 30 2024

WV Department of
Environmental Protection



Southwestern Energy®

REFERENCE WELLPATH IDENTIFICATION

Operator	SWN PRODUCTION COMPANY, LLC	Well	Roy Riggle OHI 1H
Field	Ohio	API	47069003620000
Facility	Roy Riggle OHI Pad	Wellbore	Roy Riggle OHI 1H AWB
Slot	1H		

WELLPATH DATA (201 stations)

MD [ft]	Inclination [°]	Azimuth [°]	TVD [ft]	Vert Sect [ft]	North [ft]	East [ft]	Grid East [US ft]	Grid North [US ft]	Latitude	Longitude	Closure Dist [ft]	Closure Dir [°]	DLS [°/100ft]
5259.00	16.570	207.810	5120.26	-709.56	-940.94	-447.24	1772990.28	14581353.94	40°08'56.4884"N	80°31'32.0769"W	1041.82	205.422	0.34
5350.00	15.770	205.170	5207.66	-726.46	-963.61	-458.55	1772978.98	14581331.28	40°08'56.2650"N	80°31'32.2241"W	1067.15	205.448	1.19
5441.00	15.930	206.290	5295.20	-743.29	-986.00	-469.34	1772968.19	14581308.90	40°08'56.0443"N	80°31'32.3646"W	1092.01	205.455	0.38
5531.00	14.980	203.410	5381.95	-759.78	-1007.75	-479.43	1772958.10	14581287.16	40°08'55.8300"N	80°31'32.4961"W	1115.98	205.443	1.36
5623.00	14.870	205.890	5470.84	-776.15	-1029.28	-489.31	1772948.23	14581265.64	40°08'55.6177"N	80°31'32.6247"W	1139.67	205.426	0.70
5713.00	15.230	206.340	5557.76	-791.85	-1050.27	-499.60	1772937.94	14581244.67	40°08'55.4109"N	80°31'32.7587"W	1163.04	205.440	0.42
5812.00	15.310	205.020	5653.26	-809.53	-1073.76	-510.90	1772926.65	14581221.18	40°08'55.1793"N	80°31'32.9058"W	1189.11	205.445	0.36
5902.00	11.900	212.050	5740.73	-823.18	-1092.40	-520.85	1772916.70	14581191.53	40°08'54.9956"N	80°31'33.0352"W	1210.22	205.491	4.20
5993.00	10.340	248.070	5830.12	-828.78	-1103.42	-533.42	1772904.14	14581191.82	40°08'54.8874"N	80°31'33.1978"W	1225.59	205.800	7.69
6083.00	13.010	289.030	5918.40	-822.20	-1103.13	-550.52	1772887.04	14581191.82	40°08'54.8912"N	80°31'33.4180"W	1232.87	206.522	9.44
6174.00	18.090	310.590	6006.11	-803.00	-1090.58	-570.96	1772866.61	14581204.37	40°08'55.0163"N	80°31'33.6804"W	1231.00	207.634	8.37
6265.00	24.510	317.140	6090.86	-772.86	-1067.52	-594.56	1772843.02	14581227.41	40°08'55.2454"N	80°31'33.9827"W	1221.93	209.116	7.51
6355.00	31.210	328.370	6170.44	-732.42	-1033.92	-619.53	1772818.06	14581261.00	40°08'55.5787"N	80°31'34.3020"W	1205.33	210.930	9.43
6446.00	41.470	328.360	6243.65	-679.38	-988.07	-647.78	1772789.82	14581306.83	40°08'56.0333"N	80°31'34.6626"W	1181.48	213.249	11.27
6537.00	48.730	330.570	6307.84	-615.73	-932.56	-680.43	1772757.18	14581362.33	40°08'56.5836"N	80°31'35.0793"W	1154.41	216.116	8.16
6627.00	57.620	332.130	6361.73	-544.30	-869.38	-714.89	1772722.74	14581425.49	40°08'57.2098"N	80°31'35.5186"W	1125.56	219.430	9.97
6718.00	65.560	334.040	6405.00	-464.66	-798.04	-751.04	1772686.59	14581496.79	40°08'57.9166"N	80°31'35.9793"W	1095.87	223.262	8.92
6809.00	73.620	336.150	6436.71	-379.58	-720.74	-786.89	1772650.76	14581574.07	40°08'58.6824"N	80°31'36.4356"W	1067.08	227.512	9.12
6900.00	81.570	336.030	6456.24	-290.85	-639.56	-822.88	1772614.78	14581655.22	40°08'59.4865"N	80°31'36.8936"W	1042.19	232.145	8.74
6990.00	88.610	338.850	6463.94	-201.26	-556.81	-857.25	1772580.43	14581737.94	40°09'0.3061"N	80°31'37.3305"W	1022.21	236.995	8.42
7082.00	90.460	338.750	6464.69	-109.27	-471.04	-890.52	1772547.17	14581823.67	40°09'1.1554"N	80°31'37.7530"W	1007.42	242.123	2.01
7172.00	90.310	340.470	6464.08	-19.29	-386.68	-921.87	1772515.83	14581908.00	40°09'1.9906"N	80°31'38.1510"W	999.68	247.244	1.92
7263.00	90.370	338.430	6463.54	71.68	-301.48	-953.81	1772483.90	14581993.17	40°09'2.8343"N	80°31'38.5565"W	1000.32	252.459	2.24
7353.00	90.120	338.470	6463.16	161.68	-217.77	-986.87	1772450.86	14582076.84	40°09'3.6632"N	80°31'38.9765"W	1010.61	257.556	0.28
7444.00	90.060	337.240	6463.02	252.68	-133.49	-1021.17	1772416.57	14582161.10	40°09'4.4979"N	80°31'39.4124"W	1029.86	262.563	1.35
7534.00	90.310	339.070	6462.73	342.67	-49.95	-1054.66	1772383.09	14582244.60	40°09'5.3251"N	80°31'39.8380"W	1055.84	267.288	2.05
7625.00	90.550	337.810	6462.04	433.67	34.68	-1088.10	1772349.67	14582329.19	40°09'6.1632"N	80°31'40.2628"W	1088.65	271.825	1.41
7715.00	91.570	339.220	6460.38	523.65	118.41	-1121.05	1772316.72	14582412.89	40°09'6.9923"N	80°31'40.6815"W	1127.29	276.029	1.93
7806.00	91.230	338.670	6458.15	614.62	203.30	-1153.74	1772284.05	14582497.76	40°09'7.8330"N	80°31'41.0966"W	1171.51	279.994	0.71
7896.00	91.320	338.520	6456.15	704.59	287.08	-1186.57	1772251.23	14582581.50	40°09'8.6625"N	80°31'41.5137"W	1220.81	283.601	0.19

REFERENCE WELLPATH IDENTIFICATION	
Operator	SWN PRODUCTION COMPANY, LLC
Field	Ohio
Facility	Roy Riggle OHI Pad
Slot	1H
Well	Roy Riggle OHI 1H
API	47069003620000
Wellbore	Roy Riggle OHI 1H AWB

WELLPATH DATA (201 stations)													
MD [ft]	Inclination [°]	Azimuth [°]	TVD [ft]	Vert Sect [ft]	North [ft]	East [ft]	Grid East [US ft]	Grid North [US ft]	Latitude	Longitude	Closure Dist [ft]	Closure Dir [°]	DLS [°/100ft]
7988.00	90.800	337.710	6454.45	796.58	372.43	-1220.86	1772216.96	14582666.82	40°09'9.5078"N	80°31'41.9494"W	1276.40	286.965	1.05
8078.00	91.630	338.510	6452.54	886.55	455.92	-1254.41	1772183.42	14582750.28	40°09'10.3346"N	80°31'42.3757"W	1334.69	289.974	1.28
8169.00	91.140	338.470	6450.34	977.53	540.56	-1287.76	1772150.08	14582834.88	40°09'11.1727"N	80°31'42.7995"W	1396.62	292.771	0.54
8257.00	91.170	338.530	6448.57	1065.51	622.42	-1320.01	1772117.84	14582916.71	40°09'11.9834"N	80°31'43.2092"W	1459.39	295.245	0.08
8348.00	90.620	338.280	6447.15	1156.50	707.02	-1353.50	1772084.37	14583001.28	40°09'12.8211"N	80°31'43.6347"W	1527.03	297.581	0.66
8440.00	90.460	338.490	6446.28	1248.49	792.55	-1387.39	1772050.49	14583086.77	40°09'13.6681"N	80°31'44.0653"W	1597.80	299.737	0.29
8530.00	90.580	337.170	6445.46	1338.48	875.89	-1421.35	1772016.55	14583170.08	40°09'14.4934"N	80°31'44.4969"W	1669.55	301.643	1.47
8621.00	91.390	338.810	6443.90	1429.46	960.24	-1455.44	1771982.46	14583254.40	40°09'15.3288"N	80°31'44.9303"W	1743.67	303.415	2.01
8713.00	90.740	338.400	6442.19	1521.45	1045.88	-1489.00	1771948.92	14583340.01	40°09'16.1769"N	80°31'45.3566"W	1819.61	305.085	0.84
8803.00	90.800	338.720	6440.98	1611.44	1129.65	-1521.89	1771916.04	14583423.75	40°09'17.0063"N	80°31'45.7745"W	1895.33	306.585	0.36
8894.00	90.920	338.700	6439.61	1702.43	1214.43	-1554.93	1771883.01	14583508.49	40°09'17.8459"N	80°31'46.1942"W	1972.98	307.990	0.13
8985.00	90.950	339.360	6438.13	1793.41	1299.39	-1587.49	1771850.46	14583593.42	40°09'18.6871"N	80°31'46.6078"W	2051.47	309.301	0.73
9076.00	90.620	338.920	6436.88	1884.39	1384.42	-1619.89	1771818.08	14583678.42	40°09'19.5291"N	80°31'47.0193"W	2130.88	310.518	0.60
9166.00	90.890	338.220	6435.69	1974.38	1468.19	-1652.77	1771785.21	14583762.16	40°09'20.3586"N	80°31'47.4370"W	2210.71	311.615	0.83
9258.00	90.770	337.450	6434.36	2066.37	1553.38	-1687.48	1771750.52	14583847.31	40°09'21.2023"N	80°31'47.8782"W	2293.59	312.631	0.85
9349.00	91.480	338.560	6432.58	2157.34	1637.74	-1721.55	1771716.45	14583931.64	40°09'22.0377"N	80°31'48.3112"W	2376.12	313.571	1.45
9440.00	90.920	338.710	6430.67	2248.32	1722.46	-1754.70	1771683.32	14584016.34	40°09'22.8767"N	80°31'48.7323"W	2458.83	314.469	0.64
9532.00	90.860	339.100	6429.24	2340.31	1808.29	-1787.81	1771650.23	14584102.13	40°09'23.7265"N	80°31'49.1529"W	2542.86	315.326	0.43
9623.00	90.860	339.210	6427.87	2431.29	1893.32	-1820.18	1771617.86	14584187.13	40°09'24.5685"N	80°31'49.5641"W	2626.35	316.128	0.12
9715.00	90.490	338.370	6426.79	2523.28	1979.08	-1853.46	1771584.59	14584272.86	40°09'25.4177"N	80°31'49.9869"W	2711.48	316.877	1.00
9806.00	90.860	339.050	6425.72	2614.27	2063.87	-1886.50	1771551.57	14584357.61	40°09'26.2573"N	80°31'50.4066"W	2796.15	317.571	0.85
9899.00	90.860	338.420	6424.32	2707.26	2150.52	-1920.23	1771517.85	14584444.23	40°09'27.1154"N	80°31'50.8351"W	2883.06	318.238	0.68
9991.00	90.650	339.070	6423.11	2799.25	2236.26	-1953.58	1771484.52	14584529.93	40°09'27.9643"N	80°31'51.2588"W	2969.40	318.860	0.74
10082.00	91.080	338.520	6421.74	2890.23	2321.09	-1986.49	1771451.62	14584614.73	40°09'28.8043"N	80°31'51.6769"W	3055.09	319.442	0.77
10173.00	90.800	338.390	6420.24	2981.22	2405.72	-2019.90	1771418.22	14584699.33	40°09'29.6424"N	80°31'52.1015"W	3141.25	319.982	0.34
10264.00	90.860	338.060	6418.93	3072.21	2490.21	-2053.66	1771384.48	14584783.79	40°09'30.4791"N	80°31'52.5304"W	3227.80	320.488	0.37
10355.00	90.550	338.100	6417.81	3163.20	2574.63	-2087.63	1771350.52	14584868.18	40°09'31.3151"N	80°31'52.9622"W	3314.65	320.963	0.34
10446.00	90.430	337.920	6417.03	3254.20	2659.01	-2121.70	1771316.46	14584952.52	40°09'32.1507"N	80°31'53.3953"W	3401.75	321.413	0.24
10538.00	90.430	338.240	6416.34	3346.19	2744.35	-2156.04	1771282.13	14585037.83	40°09'32.9958"N	80°31'53.8318"W	3489.98	321.846	0.35
10629.00	90.490	338.400	6415.61	3437.19	2828.91	-2189.66	1771248.53	14585122.36	40°09'33.8332"N	80°31'54.2591"W	3577.34	322.259	0.19

APR 30 2024



Actual Wellpath Report

Roy Riggle OHI 1H awp Proj: 18395'
Page 6 of 10



WV Department of
Environmental Protection

REFERENCE WELLPATH IDENTIFICATION

Operator	SWN PRODUCTION COMPANY, LLC	Well	Roy Riggle OHI 1H
Field	Ohio	API	47069003620000
Facility	Roy Riggle OHI Pad	Wellbore	Roy Riggle OHI 1H AWB
Slot	1H		

WELLPATH DATA (201 stations)

MD [ft]	Inclination [°]	Azimuth [°]	TVD [ft]	Vert Sect [ft]	North [ft]	East [ft]	Grid East [US ft]	Grid North [US ft]	Latitude	Longitude	Closure Dist [ft]	Closure Dir [°]	DLS ["/100ft]
10727.00	90.800	339.000	6414.50	3535.18	2920.21	-2225.25	1771212.94	14585213.63	40°09'34.7373"N	80°31'54.7113"W	3671.43	322.692	0.69
10824.00	90.770	338.580	6413.17	3632.17	3010.63	-2260.34	1771177.87	14585304.01	40°09'35.6326"N	80°31'55.1571"W	3764.71	323.101	0.43
10920.00	90.430	338.480	6412.17	3728.16	3099.97	-2295.48	1771142.75	14585393.31	40°09'36.5172"N	80°31'55.6036"W	3857.33	323.481	0.37
11017.00	90.770	339.520	6411.15	3825.15	3190.52	-2330.24	1771108.00	14585483.83	40°09'37.4139"N	80°31'56.0451"W	3950.87	323.857	1.13
11113.00	90.550	338.800	6410.05	3921.13	3280.23	-2364.39	1771073.86	14585573.51	40°09'38.3022"N	80°31'56.4789"W	4043.54	324.216	0.78
11210.00	90.920	338.410	6408.80	4018.12	3370.54	-2399.77	1771038.49	14585663.78	40°09'39.1964"N	80°31'56.9285"W	4137.56	324.550	0.55
11306.00	90.920	337.360	6407.26	4114.11	3459.46	-2435.91	1771002.37	14585752.67	40°09'40.0771"N	80°31'57.3879"W	4231.02	324.850	1.09
11403.00	91.200	340.690	6405.47	4211.07	3550.01	-2470.62	1770967.67	14585843.18	40°09'41.8668"N	80°31'57.8288"W	4325.10	325.164	3.44
11499.00	90.150	339.370	6404.34	4307.02	3640.22	-2503.40	1770934.90	14585933.36	40°09'42.7618"N	80°31'58.2450"W	4417.95	325.483	1.76
11596.00	88.850	338.040	6403.82	4404.01	3730.60	-2538.63	1770899.69	14586023.70	40°09'42.7618"N	80°31'58.6926"W	4512.43	325.765	1.41
11692.00	90.770	337.840	6403.82	4500.01	3819.57	-2574.68	1770863.65	14586112.64	40°09'43.6428"N	80°31'59.1509"W	4606.31	326.017	0.98
11789.00	90.430	337.340	6402.80	4597.00	3909.24	-2611.66	1770826.69	14586202.28	40°09'44.5308"N	80°31'59.6211"W	4701.37	326.254	0.62
11885.00	90.800	337.810	6401.77	4692.98	3997.97	-2648.28	1770790.08	14586290.98	40°09'45.4096"N	80°32'0.0868"W	4795.54	326.479	0.62
11982.00	90.800	337.830	6400.42	4789.97	4087.79	-2684.90	1770753.48	14586380.76	40°09'46.2990"N	80°32'0.5523"W	4890.67	326.703	0.02
12079.00	90.370	337.770	6399.43	4886.96	4177.59	-2721.54	1770716.84	14586470.53	40°09'47.1884"N	80°32'1.0183"W	4985.89	326.917	0.45
12175.00	90.520	338.370	6398.68	4982.95	4266.64	-2757.40	1770681.01	14586559.54	40°09'48.0702"N	80°32'1.4740"W	5080.10	327.127	0.64
12271.00	90.580	338.880	6397.76	5078.95	4356.03	-2792.38	1770646.03	14586648.90	40°09'48.9554"N	80°32'1.9186"W	5174.21	327.339	0.53
12368.00	90.150	338.450	6397.14	5175.94	4446.38	-2827.67	1770610.76	14586739.22	40°09'49.8501"N	80°32'2.3671"W	5269.35	327.546	0.63
12465.00	89.910	336.730	6397.09	5272.93	4536.05	-2864.65	1770573.79	14586828.85	40°09'50.7381"N	80°32'2.8373"W	5364.89	327.726	1.79
12562.00	90.250	337.720	6396.95	5369.91	4625.49	-2902.20	1770536.26	14586918.25	40°09'51.6239"N	80°32'3.3149"W	5460.58	327.894	1.08
12658.00	90.180	337.600	6396.59	5465.90	4714.28	-2938.69	1770499.78	14587007.01	40°09'52.5032"N	80°32'3.7789"W	5555.21	328.062	0.14
12754.00	90.580	338.630	6395.96	5561.90	4803.36	-2974.47	1770464.01	14587096.06	40°09'53.3853"N	80°32'4.2338"W	5649.76	328.232	1.15
12851.00	90.280	338.010	6395.23	5658.90	4893.50	-3010.31	1770428.19	14587186.16	40°09'54.2779"N	80°32'4.6893"W	5745.28	328.402	0.71
12947.00	90.000	338.440	6395.00	5754.89	4982.65	-3045.92	1770392.60	14587275.28	40°09'55.1607"N	80°32'5.1419"W	5839.90	328.562	0.53
13044.00	89.940	337.940	6395.05	5851.89	5072.70	-3081.96	1770356.57	14587365.30	40°09'56.0625"N	80°32'5.6001"W	5935.55	328.719	0.52
13141.00	90.120	337.940	6395.00	5948.89	5162.60	-3118.39	1770320.15	14587455.16	40°09'56.9629"N	80°32'6.0633"W	6031.32	328.867	0.19
13237.00	90.550	338.520	6394.43	6044.89	5251.75	-3153.99	1770284.56	14587544.28	40°09'57.8256"N	80°32'6.5158"W	6126.06	329.013	0.75
13334.00	90.400	338.580	6393.63	6141.88	5342.03	-3189.46	1770249.11	14587634.52	40°09'58.7195"N	80°32'6.9667"W	6221.73	329.161	0.17
13431.00	90.370	337.540	6392.98	6238.88	5432.00	-3225.70	1770212.88	14587724.46	40°09'59.6105"N	80°32'7.4274"W	6317.58	329.297	1.07
13527.00	90.150	337.990	6392.54	6334.87	5520.86	-3262.03	1770176.57	14587813.29	40°10'0.4905"N	80°32'7.8893"W	6412.55	329.423	0.52

Actual Wellpath Report
Roy Riggle OHI 1H awp Proj: 18395'
Page 7 of 10



REFERENCE WELLPATH IDENTIFICATION

Operator	SWN PRODUCTION COMPANY, LLC	Well	Roy Riggle OHI 1H
Field	Ohio	API	47069003620000
Facility	Roy Riggle OHI Pad	Wellbore	Roy Riggle OHI 1H AWB
Slot	1H		

WELLPATH DATA (201 stations)

MD [ft]	Inclination [°]	Azimuth [°]	TVD [ft]	Vert Sect [ft]	North [ft]	East [ft]	Grid East [US ft]	Grid North [US ft]	Latitude	Longitude	Closure Dist [ft]	Closure Dir [°]	DLS ["/100ft]
13624.00	90.060	337.680	6392.36	6431.87	5610.70	-3298.62	1770139.98	14587903.08	40°10'1.3801"N	80°32'8.3547"W	6508.52	329.548	0.33
13721.00	90.310	337.720	6392.05	6528.86	5700.44	-3335.43	1770103.19	14587992.79	40°10'2.2688"N	80°32'8.8227"W	6604.55	329.667	0.26
13817.00	90.220	337.860	6391.61	6624.86	5789.32	-3371.72	1770066.92	14588081.64	40°10'3.1490"N	80°32'9.2842"W	6699.60	329.783	0.17
13914.00	90.220	337.920	6391.23	6721.85	5879.18	-3408.28	1770030.42	14588171.47	40°10'4.0389"N	80°32'9.7484"W	6795.65	329.899	0.06
14011.00	90.120	337.450	6390.95	6818.95	5968.92	-3445.06	1769993.61	14588261.19	40°10'4.9276"N	80°32'10.2168"W	6891.76	330.008	0.50
14108.00	90.580	338.620	6390.35	6915.84	6058.87	-3481.34	1769957.34	14588351.09	40°10'5.8184"N	80°32'10.6781"W	6987.82	330.119	1.30
14204.00	90.180	337.300	6389.72	7011.83	6147.85	-3517.36	1769921.33	14588440.04	40°10'6.6995"N	80°32'11.1361"W	7082.93	330.225	1.44
14301.00	90.400	337.740	6389.23	7108.82	6237.48	-3554.45	1769884.26	14588529.63	40°10'7.5871"N	80°32'11.6078"W	7179.16	330.323	0.51
14398.00	90.220	337.920	6388.70	7205.82	6327.31	-3591.05	1769847.67	14588619.42	40°10'8.4767"N	80°32'12.0733"W	7275.34	330.423	0.26
14494.00	90.340	337.860	6388.23	7301.81	6416.25	-3627.19	1769811.55	14588708.33	40°10'9.3574"N	80°32'12.5327"W	7370.53	330.520	0.14
14591.00	90.280	337.970	6387.71	7398.81	6506.13	-3663.66	1769775.09	14588798.18	40°10'10.2475"N	80°32'12.9965"W	7466.73	330.616	0.13
14688.00	90.250	338.130	6387.26	7495.81	6596.10	-3699.91	1769738.85	14588888.11	40°10'11.1384"N	80°32'13.4575"W	7562.93	330.711	0.17
14784.00	90.830	337.300	6386.35	7591.79	6684.92	-3736.32	1769702.46	14588976.90	40°10'12.0181"N	80°32'13.9204"W	7658.21	330.798	1.05
14880.00	90.550	337.380	6385.20	7687.77	6773.51	-3773.30	1769665.49	14589065.45	40°10'12.8953"N	80°32'14.3909"W	7753.59	330.879	0.30
14977.00	90.980	337.810	6383.90	7784.75	6863.17	-3810.27	1769628.54	14589155.08	40°10'13.7833"N	80°32'14.8611"W	7849.92	330.962	0.63
15074.00	90.740	337.930	6382.45	7881.74	6953.02	-3846.80	1769592.01	14589244.89	40°10'14.6731"N	80°32'15.3257"W	7946.22	331.046	0.28
15170.00	90.950	337.800	6381.03	7977.73	7041.93	-3882.97	1769555.86	14589333.78	40°10'15.5536"N	80°32'15.7856"W	8041.54	331.127	0.26
15267.00	90.860	338.100	6379.50	8074.71	7131.83	-3919.38	1769519.46	14589423.63	40°10'16.4438"N	80°32'16.2487"W	8137.84	331.208	0.32
15363.00	91.080	337.660	6377.87	8170.69	7220.75	-3955.53	1769483.33	14589512.52	40°10'17.3243"N	80°32'16.7083"W	8233.19	331.286	0.51
15460.00	90.770	337.770	6376.31	8267.68	7310.49	-3992.30	1769446.57	14589602.23	40°10'18.2130"N	80°32'17.1760"W	8329.57	331.361	0.34
15556.00	90.650	337.210	6375.12	8363.66	7399.17	-4029.05	1769409.83	14589690.88	40°10'19.0913"N	80°32'17.6435"W	8425.02	331.430	0.60
15653.00	91.170	338.080	6373.58	8460.64	7488.87	-4065.94	1769372.96	14589780.54	40°10'19.9795"N	80°32'18.1127"W	8521.45	331.501	1.04
15750.00	90.860	337.920	6371.86	8557.62	7578.79	-4102.27	1769336.64	14589870.43	40°10'20.8700"N	80°32'18.5747"W	8617.81	331.574	0.36
15847.00	90.950	338.010	6370.33	8654.61	7668.69	-4138.66	1769300.27	14589960.30	40°10'21.7603"N	80°32'19.0374"W	8714.21	331.645	0.13
15943.00	91.020	337.980	6368.68	8750.59	7757.69	-4174.63	1769264.32	14590049.26	40°10'22.6416"N	80°32'19.4948"W	8809.61	331.714	0.08
16040.00	90.950	337.870	6367.01	8847.57	7847.56	-4211.08	1769227.88	14590139.10	40°10'23.5316"N	80°32'19.9583"W	8906.03	331.782	0.13
16137.00	90.800	337.720	6365.53	8944.56	7937.36	-4247.73	1769191.24	14590228.86	40°10'24.4208"N	80°32'20.4245"W	9002.49	331.846	0.22
16233.00	91.200	337.540	6363.85	9040.53	8026.12	-4284.26	1769154.73	14590317.59	40°10'25.2998"N	80°32'20.8891"W	9097.99	331.907	0.46
16330.00	91.170	338.880	6361.85	9137.51	8116.17	-4320.26	1769118.74	14590407.60	40°10'26.1915"N	80°32'21.3468"W	9194.39	331.974	1.38
16426.00	91.380	339.110	6359.71	9233.48	8205.77	-4354.66	1769084.35	14590497.16	40°10'27.0787"N	80°32'21.7840"W	9289.65	332.046	0.32

REFERENCE WELLPATH IDENTIFICATION

Operator	SWN PRODUCTION COMPANY, LLC	Well	Roy Riggle OHI 1H
Field	Ohio	API	47069003620000
Facility	Roy Riggle OHI Pad	Wellbore	Roy Riggle OHI 1H AWB
Slot	1H		

WELLPATH DATA (201 stations) † = interpolated, ‡ = extrapolated station

MD [ft]	Inclination [°]	Azimuth [°]	TVD [ft]	Vert Sect [ft]	North [ft]	East [ft]	Grid East [US ft]	Grid North [US ft]	Latitude	Longitude	Closure Dist [ft]	Closure Dir [°]	DLS ["/100ft]
16522.00	91.720	339.050	6357.11	9329.44	8295.41	-4388.93	1769050.10	14590586.77	40°10'27.9662"N	80°32'22.2195"W	9384.90	332.118	0.36
16619.00	91.750	339.150	6354.18	9426.38	8385.98	-4423.51	1769015.52	14590677.31	40°10'28.8631"N	80°32'22.6590"W	9481.15	332.189	0.11
16716.00	91.510	338.680	6351.42	9523.34	8476.45	-4458.40	1768980.66	14590767.74	40°10'29.7589"N	80°32'23.1023"W	9577.45	332.257	0.54
16812.00	91.570	338.790	6348.84	9619.30	8565.88	-4493.20	1768945.86	14590857.14	40°10'30.6444"N	80°32'23.5447"W	9672.81	332.321	0.13
16909.00	91.850	338.910	6345.94	9716.26	8656.31	-4528.18	1768910.89	14590947.53	40°10'31.5398"N	80°32'23.9893"W	9769.14	332.386	0.31
17005.00	92.120	339.270	6342.62	9812.19	8745.93	-4562.43	1768876.67	14591037.12	40°10'32.4272"N	80°32'24.4245"W	9864.43	332.451	0.47
17101.00	91.750	338.950	6339.38	9908.13	8835.57	-4596.64	1768842.47	14591126.73	40°10'33.3147"N	80°32'24.8592"W	9959.74	332.515	0.51
17198.00	91.820	338.820	6336.36	10005.08	8926.01	-4631.56	1768807.55	14591217.14	40°10'34.2102"N	80°32'25.3032"W	10056.10	332.576	0.15
17294.00	91.790	338.700	6333.33	10101.03	9015.45	-4666.32	1768772.81	14591306.54	40°10'35.0958"N	80°32'25.7450"W	10151.50	332.634	0.13
17390.00	91.790	339.190	6330.33	10196.97	9104.99	-4700.80	1768738.35	14591396.05	40°10'35.9825"N	80°32'26.1831"W	10246.87	332.693	0.51
17487.00	91.910	338.880	6327.20	10293.92	9195.53	-4735.49	1768703.67	14591486.54	40°10'36.8789"N	80°32'26.6240"W	10343.23	332.753	0.34
17584.00	91.940	338.960	6323.94	10390.86	9285.98	-4770.35	1768668.82	14591576.97	40°10'37.7745"N	80°32'27.0672"W	10439.62	332.810	0.09
17680.00	91.720	339.050	6320.88	10486.80	9375.56	-4804.73	1768634.45	14591666.51	40°10'38.6615"N	80°32'27.5041"W	10535.02	332.866	0.25
17777.00	91.570	338.650	6318.09	10583.76	9465.99	-4839.72	1768599.48	14591756.91	40°10'39.5569"N	80°32'27.9488"W	10631.46	332.921	0.44
17873.00	92.150	338.840	6314.98	10679.70	9555.41	-4874.50	1768564.71	14591846.30	40°10'40.4423"N	80°32'28.3909"W	10726.91	332.973	0.64
17970.00	91.750	338.780	6311.68	10776.64	9645.80	-4909.54	1768529.68	14591936.65	40°10'41.3373"N	80°32'28.8363"W	10823.36	333.025	0.42
18067.00	91.660	339.090	6308.79	10873.60	9736.28	-4944.39	1768494.85	14592027.09	40°10'42.2332"N	80°32'29.2793"W	10919.81	333.077	0.33
18163.00	91.660	338.940	6306.01	10969.55	9825.88	-4978.76	1768460.50	14592116.65	40°10'43.1203"N	80°32'29.7161"W	11015.25	333.129	0.16
18260.00	91.510	338.560	6303.33	11066.51	9916.25	-5013.90	1768425.37	14592206.99	40°10'44.0152"N	80°32'30.1628"W	11111.76	333.178	0.42
18356.00	91.570	338.580	6300.75	11162.47	10005.58	-5048.96	1768390.32	14592296.29	40°10'44.8997"N	80°32'30.6086"W	11207.30	333.224	0.07
18395.00	91.570	338.580	6299.68	11201.46	10041.87	-5063.20	1768376.09	14592332.57	40°10'45.2591"N	80°32'30.7896"W	11246.12	333.242	0.00

REFERENCE WELLPATH IDENTIFICATION

Operator	SWN PRODUCTION COMPANY, LLC	Well	Roy Riggle OHI 1H
Field	Ohio	API	47069003620000
Facility	Roy Riggle OHI Pad	Wellbore	Roy Riggle OHI 1H AWB
Slot	1H		

HOLE & CASING SECTIONS - Ref Wellbore: Roy Riggle OHI 1H AWB Ref Wellpath: Roy Riggle OHI 1H awp Proj: 18395'

String/Diameter	Start MD [ft]	End MD [ft]	Interval [ft]	Start TVD [ft]	End TVD [ft]	Start N/S [ft]	End N/S [ft]	Start E/W [ft]	End E/W [ft]
13.375in Casing	26.00	678.00	652.00	26.00	677.97	0.00	0.00	0.00	-3.39
9.625in Casing	26.00	2074.00	2048.00	26.00	2049.48	0.00	0.00	0.00	-176.07
5.5in Casing	26.00	18395.00	18369.00	26.00	6299.68	0.00	0.00	0.00	10041.87

TARGETS

Name	TVD [ft]	North [ft]	East [ft]	Grid East [US ft]	Grid North [US ft]	Latitude	Longitude	Shape
Roy Riggle OHI 1H BHL rev2	6304.00	10042.06	-5063.80	1768375.49	14592332.76	40°10'45.2610"N	80°32'30.7973"W	point
Roy Riggle OHI 1H LP rev 4	6465.00	-541.63	-862.92	1772574.76	14581763.10	40°09'0.4563"N	80°31'37.4025"W	point

WELLPATH COMPOSITION - Ref Wellbore: Roy Riggle OHI 1H AWB Ref Wellpath: Roy Riggle OHI 1H awp Proj: 18395'

Start MD [ft]	End MD [ft]	Positional Uncertainty Model	Log Name/Comment	Wellbore	Survey Date
26.00	685.00	OWSG MWD rev2 + IFR1 + Multi-Station Correction	1 Total MWD IFR-MSA 17.5" 166' - 685'	Roy Riggle OHI 1H AWB	11/21/2023
685.00	2004.00	OWSG MWD rev2 + IFR1 + Multi-Station Correction	2 Total MWD IFR-MSA 12.25" 776' - 2004'	Roy Riggle OHI 1H AWB	11/21/2023
2004.00	5713.00	OWSG MWD rev2 + IFR1 + Multi-Station Correction	3 Total MWD IFR-MSA 8.75" 2066' - 5713'	Roy Riggle OHI 1H AWB	11/21/2023
5713.00	18395.00	OWSG MWD rev2 + IFR1 + Multi-Station Correction	4 BH MWD IFR MSA Short spacing 8.5" 5812' - 18356'	Roy Riggle OHI 1H AWB	11/21/2023

RECEIVED
Office Of Oil and Gas
APR 30 2024
WV Department of
Environmental Protection

REFERENCE WELLPATH IDENTIFICATION

Operator	SWN PRODUCTION COMPANY, LLC	Well	Roy Riggle OHI 1H
Field	Ohio	API	47069003620000
Facility	Roy Riggle OHI Pad	Wellbore	Roy Riggle OHI 1H AWB
Slot	1H		

WELLPATH COMMENTS

MD [ft]	Inclination [°]	Azimuth [°]	TVD [ft]	Comment
166.00	1.000	181.680	165.991	Total MWD IFR-MSA 17.5" 166' - 685'
776.00	1.220	9.980	775.972	Total MWD IFR-MSA 12.25" 776' - 2004'
2066.00	16.720	199.000	2041.823	Total MWD IFR-MSA 8.75" 2066' - 5713'
5812.00	15.310	205.020	5653.264	BH MWD IFR MSA Short spacing 8.5" 5812' - 18356'
18395.00	91.570	338.580	6299.68	Proj to TD

RECEIVED
Office Of Oil and Gas
APR 30 2024

WV Department of
Environmental Protection

RECEIVED
Office Of Oil and Gas

APR 30 2024

WV Department of
Environmental Protection