



SWN PRODUCTION COMPANY, LLC



Location: Ohio County, WV
 Field: Ohio VW
 Facility: Carl Rotter OHI Pad

Slot: Slot 6H
 Well: Carl Rotter OHI 6H
 Wellbore: Carl Rotter OHI 6H AWB

Plot reference wellpath is Carl Rotter OHI 6H AWB_ awp 100' - 19584' Proj: 19609'
 True vertical depths are referenced to SDC 40 (KB)
 Reference wellpath measured depths are referenced to SDC 40 (KB)
 SDC 40 (KB) to Mean Sea Level: 1362.7 feet
 Mean Sea Level to Ground level (At Slot: Slot 6H): -1336.7 feet
 Offset wellpath MDs are referenced to each path's default MD datum

Grid System: NAD83 / UTM Zone 17 North, US feet
 North Reference: Grid north
 Scale: True distance
 Coordinates are in feet referenced to Slot
 Depths are in feet
 Created by: Iranlam on 2022-03-30; Database: WA_MPL_EASTERNUS_Defn

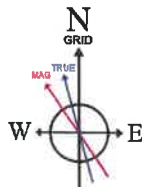
Location Information

Facility Name		Grid East (US ft)	Grid North (US ft)	Latitude	Longitude
Carl Rotter OHI Pad		1768372.772	14564065.056	40°06'5.8140"N	80°32'32.7080"W
Slot	Local N (ft)	Local E (ft)	Grid East (US ft)	Grid North (US ft)	Longitude
Slot 6H	-42.59	-26.75	1768346.030	14564022.480	80°32'33.0551"W
SDC 40 (KB) to Ground level (At Slot: Slot 6H)				26ft	
Mean Sea Level to Ground level (At Slot: Slot 6H)				-1336.7ft	
SDC 40 (KB) to Mean Sea Level				1362.7ft	

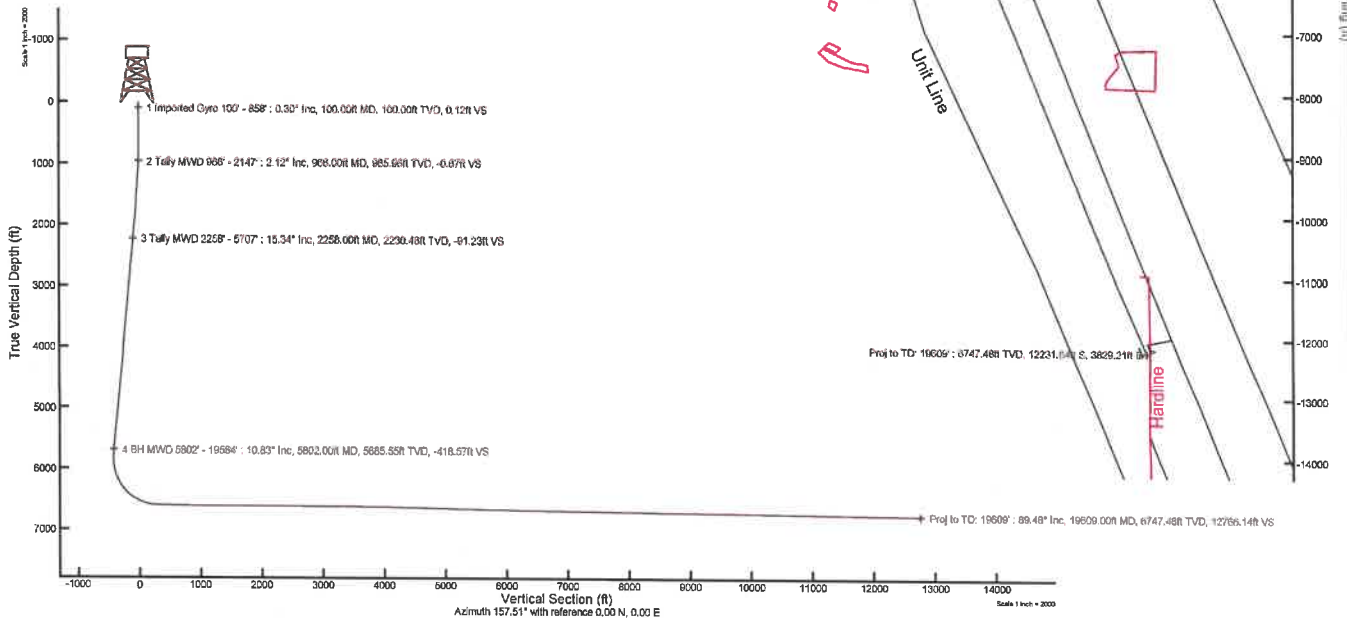
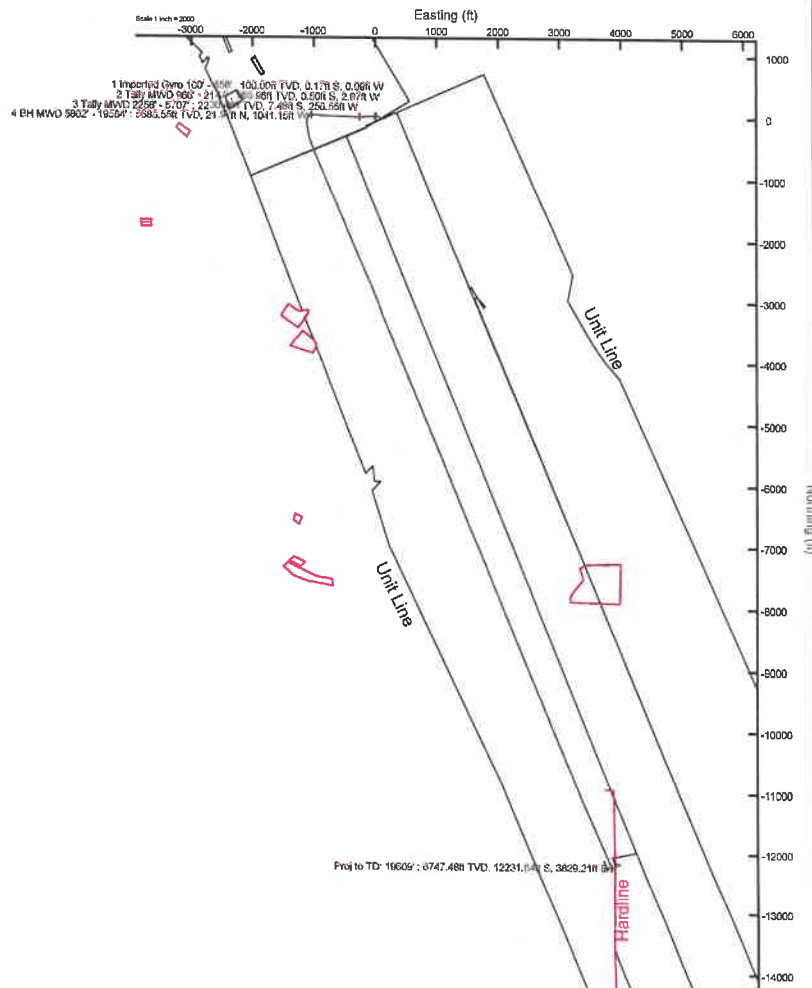
Bottom Hole Location

MD (ft)	Inc (°)	Az (°)	TVD (ft)	Local N (ft)	Local E (ft)	Grid East (US ft)	Grid North (US ft)	Latitude	Longitude
19609.00	89.480	157.010	6747.48	-12231.64	3829.21	1772173.77	14551795.53	40°04'4.3235"N	80°31'44.6119"W

API:47069003270000
BH JOB: 111260077
DURATION: 03.23.2022 to 03.27.2022
RIG: SDC 40



HDGM2022v1.0 (1900.0 to 2023.0) Dip: 67.08° Field: 52264.7 nT
 Magnetic North is 8.46 degrees West of True North (at 3/3/2022)
 Grid North is 0.29 degrees East of True North
 To correct azimuth from True to Grid subtract 0.29 degrees
 To correct azimuth from Magnetic to Grid subtract 8.75 degrees



10/21/2022

REFERENCE WELLPATH IDENTIFICATION			
Operator	SWN PRODUCTION COMPANY, LLC	Well	Carl Rotter OHI 6H
Field	Ohio VW	API	47069003270000
Facility	Carl Rotter OHI Pad	Wellbore	Carl Rotter OHI 6H AWB
Slot	Slot 6H		

REPORT SETUP INFORMATION			
Projection System	NAD83 / UTM Zone 17 North, US feet	Software System	WellArchitect® 6.0
North Reference	Grid	User	Tranlam
Scale	0.999619	Report Generated	3/30/2022 at 11:52:56 AM
Convergence at slot	0.29° East	Database	WA_MPL_EASTERNUS_Defn

WELLPATH LOCATION						
	Local coordinates		Grid coordinates		Geographic coordinates	
	North[ft]	East[ft]	Easting[US ft]	Northing[US ft]	Latitude	Longitude
Slot Location	-42.59	-26.75	1768346.03	14564022.48	40°06'5.3945"N	80°32'33.0551"W
Facility Reference Pt			1768372.77	14564065.06	40°06'5.8140"N	80°32'32.7080"W
Field Reference Pt			0.00	0.00	0°00'0.0000"	85°29'19.4780"W

WELLPATH DATUM			
Calculation method	Minimum curvature	SDC 40 (KB) to Facility Vertical Datum	1362.70ft
Horizontal Reference Pt	Slot	SDC 40 (KB) to Mean Sea Level	1362.70ft
Vertical Reference Pt	SDC 40 (KB)	SDC 40 (KB) to Ground Level at Slot (Slot 6H)	26.00ft
MD Reference Pt	SDC 40 (KB)	Section Origin	N 0.00, E 0.00 ft
Field Vertical Reference	Mean Sea Level	Section Azimuth	157.51°

REFERENCE WELLPATH IDENTIFICATION

Operator	SWN PRODUCTION COMPANY, LLC	Well	Carl Rotter OHI 6H
Field	Ohio VW	API	47069003270000
Facility	Carl Rotter OHI Pad	Wellbore	Carl Rotter OHI 6H AWB
Slot	Slot 6H		

WELLPATH DATA (226 stations) † = interpolated, ‡ = extrapolated station

MD [ft]	Inclination [°]	Azimuth [°]	TVD [ft]	Vert Sect [ft]	North [ft]	East [ft]	Grid East [US ft]	Grid North [US ft]	Latitude	Longitude	DLS [°/100ft]	Comments
0.00†	0.000	209.310	0.00	0.00	0.00	0.00	1768346.03	14564022.48	40°06'5.3945"N	80°32'33.0551"W	0.00	
26.00	0.000	209.310	26.00	0.00	0.00	0.00	1768346.03	14564022.48	40°06'5.3945"N	80°32'33.0551"W	0.00	
100.00	0.300	209.310	100.00	0.12	-0.17	-0.09	1768345.94	14564022.31	40°06'5.3928"N	80°32'33.0563"W	0.41	1 Imported Gyro 100' - 858'
150.00	0.240	208.590	150.00	0.27	-0.38	-0.21	1768345.82	14564022.11	40°06'5.3908"N	80°32'33.0578"W	0.12	
200.00	0.110	253.570	200.00	0.33	-0.48	-0.31	1768345.72	14564022.00	40°06'5.3897"N	80°32'33.0590"W	0.36	
250.00	0.120	205.690	250.00	0.36	-0.54	-0.37	1768345.66	14564021.94	40°06'5.3891"N	80°32'33.0599"W	0.19	
300.00	0.050	304.650	300.00	0.37	-0.58	-0.41	1768345.62	14564021.90	40°06'5.3888"N	80°32'33.0605"W	0.27	
350.00	0.080	204.050	350.00	0.38	-0.60	-0.45	1768345.58	14564021.88	40°06'5.3886"N	80°32'33.0609"W	0.20	
400.00	0.090	177.040	400.00	0.44	-0.67	-0.46	1768345.57	14564021.81	40°06'5.3879"N	80°32'33.0610"W	0.08	
450.00	0.070	140.820	450.00	0.51	-0.73	-0.44	1768345.59	14564021.75	40°06'5.3873"N	80°32'33.0608"W	0.11	
500.00	0.070	197.960	500.00	0.56	-0.78	-0.43	1768345.60	14564021.70	40°06'5.3868"N	80°32'33.0606"W	0.13	
550.00	0.050	59.750	550.00	0.58	-0.80	-0.42	1768345.61	14564021.68	40°06'5.3866"N	80°32'33.0605"W	0.22	
600.00	0.070	109.380	600.00	0.60	-0.80	-0.37	1768345.66	14564021.68	40°06'5.3866"N	80°32'33.0599"W	0.11	
650.00	0.030	230.520	650.00	0.62	-0.82	-0.35	1768345.68	14564021.66	40°06'5.3864"N	80°32'33.0597"W	0.18	
700.00	0.090	109.710	700.00	0.65	-0.84	-0.33	1768345.71	14564021.64	40°06'5.3862"N	80°32'33.0593"W	0.22	
750.00	0.130	115.810	750.00	0.72	-0.88	-0.24	1768345.79	14564021.60	40°06'5.3858"N	80°32'33.0582"W	0.08	
800.00	0.060	145.120	800.00	0.79	-0.92	-0.17	1768345.86	14564021.56	40°06'5.3853"N	80°32'33.0573"W	0.17	
850.00	0.250	287.150	850.00	0.74	-0.91	-0.26	1768345.77	14564021.57	40°06'5.3855"N	80°32'33.0585"W	0.60	
858.00	0.720	272.380	858.00	0.71	-0.91	-0.33	1768345.70	14564021.57	40°06'5.3855"N	80°32'33.0594"W	6.03	
966.00	2.120	280.800	965.96	-0.67	-0.50	-2.97	1768343.06	14564021.98	40°06'5.3896"N	80°32'33.0933"W	1.31	2 Tally MWD 966' - 2147'
1057.00	4.320	279.520	1056.81	-3.41	0.38	-8.00	1768338.03	14564022.86	40°06'5.3986"N	80°32'33.1580"W	2.42	
1148.00	7.350	279.890	1147.33	-8.35	1.95	-17.12	1768328.92	14564024.43	40°06'5.4146"N	80°32'33.2752"W	3.33	
1238.00	9.960	276.620	1236.30	-15.22	3.83	-30.52	1768315.52	14564026.31	40°06'5.4339"N	80°32'33.4476"W	2.95	
1329.00	12.060	274.380	1325.62	-23.34	5.47	-47.82	1768298.23	14564027.94	40°06'5.4509"N	80°32'33.6701"W	2.35	
1420.00	12.820	267.990	1414.49	-31.17	5.84	-67.39	1768278.66	14564028.32	40°06'5.4556"N	80°32'33.9219"W	1.73	
1510.00	11.950	262.600	1502.39	-37.09	4.29	-86.61	1768259.45	14564026.77	40°06'5.4412"N	80°32'34.1694"W	1.61	
1601.00	10.570	260.150	1591.64	-41.37	1.65	-104.18	1768241.89	14564024.13	40°06'5.4160"N	80°32'34.3956"W	1.60	
1692.00	11.650	264.290	1680.94	-45.85	-0.70	-121.54	1768224.53	14564021.78	40°06'5.3938"N	80°32'34.6192"W	1.47	
1782.00	14.110	265.930	1768.66	-51.94	-2.38	-141.53	1768204.55	14564020.10	40°06'5.3781"N	80°32'34.8766"W	2.76	
1875.00	14.780	267.520	1858.72	-59.58	-3.70	-164.69	1768181.40	14564018.78	40°06'5.3663"N	80°32'35.1747"W	0.84	

REFERENCE WELLPATH IDENTIFICATION			
Operator	SWN PRODUCTION COMPANY, LLC	Well	Carl Rotter OHI 6H
Field	Ohio VW	API	47069003270000
Facility	Carl Rotter OHI Pad *	Wellbore	Carl Rotter OHI 6H AWB
Slot	Slot 6H		

WELLPATH DATA (226 stations)												
MD [ft]	Inclination [°]	Azimuth [°]	TVD [ft]	Vert Sect [ft]	North [ft]	East [ft]	Grid East [US ft]	Grid North [US ft]	Latitude	Longitude	DLS [°/100ft]	Comments
1966.00	13.890	270.600	1946.89	-67.84	-4.08	-187.21	1768158.89	14564018.40	40°06'5.3636"N	80°32'35.4645"W	1.29	
2057.00	12.820	269.950	2035.43	-75.98	-3.98	-208.23	1768137.88	14564018.50	40°06'5.3657"N	80°32'35.7350"W	1.19	
2147.00	13.720	266.530	2123.03	-83.27	-4.63	-228.87	1768117.25	14564017.85	40°06'5.3603"N	80°32'36.0006"W	1.33	
2258.00	15.340	261.990	2230.48	-91.23	-7.48	-256.55	1768089.58	14564015.01	40°06'5.3336"N	80°32'36.3570"W	1.78	3 Tally MWD 2258' - 5707'
2350.00	15.200	265.770	2319.23	-98.05	-10.06	-280.63	1768065.51	14564012.42	40°06'5.3093"N	80°32'36.6670"W	1.09	
2441.00	14.230	269.820	2407.25	-106.03	-10.98	-303.71	1768042.44	14564011.51	40°06'5.3014"N	80°32'36.9641"W	1.55	
2532.00	13.480	272.910	2495.60	-114.83	-10.47	-325.49	1768020.67	14564012.01	40°06'5.3075"N	80°32'37.2443"W	1.16	
2624.00	12.750	277.330	2585.20	-124.48	-8.63	-346.27	1767999.89	14564013.85	40°06'5.3267"N	80°32'37.5116"W	1.35	
2715.00	11.620	277.710	2674.15	-134.08	-6.12	-365.31	1767980.86	14564016.36	40°06'5.3525"N	80°32'37.7565"W	1.24	
2805.00	11.680	273.730	2762.30	-142.67	-4.31	-383.38	1767962.79	14564018.17	40°06'5.3713"N	80°32'37.9890"W	0.90	
2897.00	11.960	276.120	2852.35	-151.35	-2.69	-402.15	1767944.03	14564019.79	40°06'5.3883"N	80°32'38.2304"W	0.61	
2989.00	12.190	269.410	2942.32	-159.53	-1.78	-421.35	1767924.85	14564020.70	40°06'5.3983"N	80°32'38.4773"W	1.55	
3082.00	11.960	271.530	3033.26	-167.12	-1.62	-440.80	1767905.40	14564020.86	40°06'5.4008"N	80°32'38.7276"W	0.54	
3174.00	12.910	273.580	3123.10	-175.51	-0.72	-460.58	1767885.62	14564021.76	40°06'5.4107"N	80°32'38.9822"W	1.14	
3266.00	13.390	270.890	3212.69	-184.26	0.08	-481.49	1767864.72	14564022.56	40°06'5.4197"N	80°32'39.2512"W	0.85	
3356.00	13.660	272.420	3300.19	-192.87	0.69	-502.53	1767843.69	14564023.17	40°06'5.4268"N	80°32'39.5219"W	0.50	
3448.00	13.910	267.520	3389.55	-201.23	0.67	-524.43	1767821.80	14564023.15	40°06'5.4277"N	80°32'39.8037"W	1.30	
3539.00	12.720	271.160	3478.10	-208.99	0.40	-545.38	1767800.86	14564022.88	40°06'5.4261"N	80°32'40.0733"W	1.60	
3627.00	11.890	275.500	3564.08	-217.13	1.47	-564.09	1767782.16	14564023.95	40°06'5.4376"N	80°32'40.3140"W	1.41	
3717.00	12.130	271.210	3652.11	-225.29	2.56	-582.77	1767763.48	14564025.04	40°06'5.4493"N	80°32'40.5543"W	1.03	
3805.00	11.730	272.660	3738.21	-232.80	3.17	-600.95	1767745.31	14564025.65	40°06'5.4562"N	80°32'40.7882"W	0.57	
3894.00	11.350	268.740	3825.41	-239.82	3.39	-618.74	1767727.52	14564025.87	40°06'5.4594"N	80°32'41.0172"W	0.98	
3982.00	11.270	269.940	3911.70	-246.24	3.20	-636.00	1767710.27	14564025.67	40°06'5.4583"N	80°32'41.2393"W	0.28	
4074.00	10.520	271.580	4002.05	-253.09	3.42	-653.39	1767692.89	14564025.90	40°06'5.4614"N	80°32'41.4630"W	0.88	
4164.00	11.060	273.110	4090.45	-260.17	4.11	-670.22	1767676.07	14564026.59	40°06'5.4691"N	80°32'41.6796"W	0.68	
4257.00	12.490	270.260	4181.50	-267.92	4.64	-689.18	1767657.11	14564027.12	40°06'5.4753"N	80°32'41.9236"W	1.66	
4347.00	13.160	271.910	4269.25	-275.91	5.03	-709.16	1767637.15	14564027.51	40°06'5.4801"N	80°32'42.1806"W	0.85	
4438.00	13.760	268.990	4357.75	-284.16	5.18	-730.33	1767615.98	14564027.66	40°06'5.4827"N	80°32'42.4530"W	1.00	
4529.00	14.120	270.320	4446.07	-292.42	5.05	-752.25	1767594.07	14564027.53	40°06'5.4825"N	80°32'42.7351"W	0.53	
4619.00	14.310	273.670	4533.32	-301.58	5.83	-774.33	1767572.00	14564028.30	40°06'5.4913"N	80°32'43.0192"W	0.94	

REFERENCE WELLPATH IDENTIFICATION			
Operator	SWN PRODUCTION COMPANY, LLC	Well	Carl Rotter OHI 6H
Field	Ohio VW	API	47069003270000
Facility	Carl Rotter OHI Pad	Wellbore	Carl Rotter OHI 6H AWB
Slot	Slot 6H		

WELLPATH DATA (226 stations)												
MD [ft]	Inclination [°]	Azimuth [°]	TVD [ft]	Vert Sect [ft]	North [ft]	East [ft]	Grid East [US ft]	Grid North [US ft]	Latitude	Longitude	DLS [°/100ft]	Comments
4710.00	13.830	275.740	4621.59	-311.68	7.63	-796.37	1767549.96	14564030.11	40°06'5.5103"N	80°32'43.3028"W	0.76	
4801.00	13.360	271.680	4710.04	-321.13	9.03	-817.71	1767528.64	14564031.51	40°06'5.5251"N	80°32'43.5772"W	1.17	
4891.00	13.310	271.510	4797.61	-329.61	9.61	-838.46	1767507.90	14564032.08	40°06'5.5319"N	80°32'43.8442"W	0.07	
4984.00	12.440	272.100	4888.27	-338.13	10.26	-859.17	1767487.19	14564032.73	40°06'5.5393"N	80°32'44.1106"W	0.95	
5077.00	12.810	275.930	4979.03	-347.20	11.69	-879.43	1767466.93	14564034.17	40°06'5.5545"N	80°32'44.3713"W	0.98	
5166.00	13.420	277.740	5065.70	-357.10	14.10	-899.48	1767446.89	14564036.57	40°06'5.5794"N	80°32'44.6292"W	0.83	
5257.00	13.760	277.220	5154.16	-367.78	16.88	-920.68	1767425.70	14564039.36	40°06'5.6079"N	80°32'44.9018"W	0.40	
5349.00	13.180	277.830	5243.63	-378.50	19.69	-941.93	1767404.46	14564042.16	40°06'5.6367"N	80°32'45.1750"W	0.65	
5439.00	13.290	273.320	5331.24	-388.18	21.68	-962.42	1767383.98	14564044.16	40°06'5.6575"N	80°32'45.4386"W	1.15	
5526.00	13.390	269.770	5415.89	-396.35	22.22	-982.48	1767363.93	14564044.69	40°06'5.6638"N	80°32'45.6967"W	0.95	
5616.00	13.020	268.050	5503.51	-403.86	21.84	-1003.03	1767343.39	14564044.31	40°06'5.6610"N	80°32'45.9612"W	0.60	
5707.00	11.760	271.490	5592.39	-411.22	21.73	-1022.55	1767323.88	14564044.20	40°06'5.6609"N	80°32'46.2123"W	1.60	
5802.00	10.830	269.970	5685.55	-418.57	21.97	-1041.15	1767305.28	14564044.45	40°06'5.6643"N	80°32'46.4517"W	1.03	4 BH MWD 5802' - 19584'
5893.00	11.000	266.380	5774.91	-424.64	21.42	-1058.36	1767288.07	14564043.89	40°06'5.6597"N	80°32'46.6733"W	0.77	
5983.00	12.680	237.830	5863.06	-425.76	15.62	-1075.31	1767271.13	14564038.09	40°06'5.6032"N	80°32'46.8917"W	6.69	
6074.00	17.450	222.890	5950.94	-418.39	0.29	-1093.07	1767253.38	14564022.77	40°06'5.4526"N	80°32'47.1212"W	6.72	
6165.00	19.110	199.780	6037.46	-401.66	-23.76	-1107.41	1767239.04	14563998.73	40°06'5.2157"N	80°32'47.3074"W	8.12	
6258.00	23.300	186.090	6124.20	-374.21	-56.41	-1114.52	1767231.93	14563966.09	40°06'4.8934"N	80°32'47.4011"W	6.95	
6349.00	28.960	180.090	6205.88	-338.03	-96.38	-1116.47	1767229.99	14563926.14	40°06'4.4986"N	80°32'47.4287"W	6.86	
6441.00	35.290	174.720	6283.77	-292.02	-145.17	-1114.06	1767232.40	14563877.37	40°06'4.0163"N	80°32'47.4009"W	7.54	
6532.00	42.250	170.680	6354.69	-237.05	-201.61	-1106.67	1767239.78	14563820.94	40°06'3.4581"N	80°32'47.3096"W	8.13	
6621.00	49.100	169.270	6416.84	-174.91	-264.26	-1095.55	1767250.90	14563758.32	40°06'2.8385"N	80°32'47.1706"W	7.78	
6712.00	58.380	164.670	6470.62	-102.61	-335.60	-1078.86	1767267.58	14563687.01	40°06'2.1327"N	80°32'46.9605"W	10.98	
6802.00	61.920	158.980	6515.44	-24.83	-409.69	-1054.47	1767291.97	14563612.95	40°06'1.3993"N	80°32'46.6514"W	6.75	
6893.00	69.070	159.100	6553.16	57.89	-486.96	-1024.87	1767321.55	14563535.71	40°06'0.6342"N	80°32'46.2756"W	7.86	
6983.00	77.270	159.850	6579.19	143.91	-567.57	-994.70	1767351.71	14563455.13	40°05'59.8361"N	80°32'45.8927"W	9.15	
7074.00	84.950	158.960	6593.25	233.70	-651.67	-963.09	1767383.31	14563371.06	40°05'59.0034"N	80°32'45.4915"W	8.49	
7164.00	90.490	158.210	6596.82	323.58	-735.35	-930.27	1767416.12	14563287.41	40°05'58.1748"N	80°32'45.0746"W	6.21	
7255.00	88.490	155.710	6597.63	414.56	-819.08	-894.66	1767451.71	14563203.71	40°05'57.3456"N	80°32'44.6219"W	3.52	
7346.00	89.290	155.300	6599.40	505.48	-901.87	-856.94	1767489.42	14563120.95	40°05'56.5255"N	80°32'44.1419"W	0.99	

REFERENCE WELLPATH IDENTIFICATION			
Operator	SWN PRODUCTION COMPANY, LLC	Well	Carl Rotter OHI 6H
Field	Ohio VW	API	47069003270000
Facility	Carl Rotter OHI Pad	Wellbore	Carl Rotter OHI 6H AWB
Slot	Slot 6H		

WELLPATH DATA (226 stations)												
MD [ft]	Inclination [°]	Azimuth [°]	TVD [ft]	Vert Sect [ft]	North [ft]	East [ft]	Grid East [US ft]	Grid North [US ft]	Latitude	Longitude	DLS [°/100ft]	Comments
7437.00	89.020	157.440	6600.74	596.45	-985.23	-820.47	1767525.87	14563037.63	40°05'55.7000"N	80°32'43.6781"W	2.37	
7529.00	89.140	157.120	6602.22	688.44	-1070.08	-784.94	1767561.39	14562952.81	40°05'54.8597"N	80°32'43.2265"W	0.37	
7620.00	89.780	157.040	6603.07	779.43	-1153.89	-749.50	1767596.81	14562869.03	40°05'54.0297"N	80°32'42.7760"W	0.71	
7712.00	88.740	156.700	6604.26	871.42	-1238.49	-713.37	1767632.93	14562784.47	40°05'53.1919"N	80°32'42.3166"W	1.19	
7802.00	89.380	155.580	6605.74	961.38	-1320.78	-676.97	1767669.32	14562702.20	40°05'52.3768"N	80°32'41.8536"W	1.43	
7893.00	90.030	157.570	6606.21	1052.36	-1404.28	-640.79	1767705.48	14562618.74	40°05'51.5499"N	80°32'41.3937"W	2.30	
7983.00	89.420	157.680	6606.64	1142.36	-1487.50	-606.54	1767739.73	14562535.55	40°05'50.7257"N	80°32'40.9583"W	0.69	
8073.00	89.540	157.130	6607.46	1232.35	-1570.59	-571.96	1767774.29	14562452.50	40°05'49.9029"N	80°32'40.5188"W	0.63	
8165.00	90.950	157.720	6607.06	1324.35	-1655.53	-536.64	1767809.59	14562367.58	40°05'49.0616"N	80°32'40.0700"W	1.66	
8256.00	88.120	156.060	6607.80	1415.33	-1739.22	-500.93	1767845.29	14562283.93	40°05'48.2329"N	80°32'39.6160"W	3.61	
8346.00	91.510	160.380	6608.09	1505.29	-1822.76	-467.55	1767878.66	14562200.42	40°05'47.4056"N	80°32'39.1919"W	6.10	
8437.00	88.980	154.950	6607.70	1596.24	-1906.89	-432.98	1767913.21	14562116.32	40°05'46.5724"N	80°32'38.7527"W	6.58	
8527.00	89.420	157.180	6608.96	1686.20	-1989.14	-396.48	1767949.71	14562034.10	40°05'45.7578"N	80°32'38.2884"W	2.53	
8617.00	89.080	157.620	6610.14	1776.19	-2072.22	-361.89	1767984.28	14561951.05	40°05'44.9351"N	80°32'37.8489"W	0.62	
8709.00	90.520	157.900	6610.46	1868.19	-2157.38	-327.07	1768019.08	14561865.93	40°05'44.0918"N	80°32'37.4064"W	1.59	
8799.00	88.550	154.830	6611.19	1958.15	-2239.81	-291.00	1768055.14	14561783.53	40°05'43.2754"N	80°32'36.9477"W	4.05	
8889.00	89.820	156.560	6612.47	2048.09	-2321.82	-253.96	1768092.17	14561701.55	40°05'42.4631"N	80°32'36.4765"W	2.38	
8980.00	89.720	157.190	6612.83	2139.08	-2405.51	-218.22	1768127.89	14561617.89	40°05'41.6343"N	80°32'36.0222"W	0.70	
9070.00	89.910	158.430	6613.13	2229.08	-2488.84	-184.23	1768161.87	14561534.59	40°05'40.8090"N	80°32'35.5904"W	1.39	
9163.00	92.800	155.200	6610.93	2322.03	-2574.29	-147.64	1768198.45	14561449.18	40°05'39.9628"N	80°32'35.1251"W	4.66	
9253.00	88.740	155.500	6609.72	2411.94	-2656.06	-110.11	1768235.96	14561367.44	40°05'39.1528"N	80°32'34.6477"W	4.52	
9345.00	89.320	157.780	6611.27	2503.91	-2740.50	-73.64	1768272.42	14561283.03	40°05'38.3165"N	80°32'34.1840"W	2.56	
9437.00	89.050	158.270	6612.58	2595.89	-2825.81	-39.22	1768306.83	14561197.76	40°05'37.4718"N	80°32'33.7467"W	0.61	
9528.00	89.380	158.830	6613.83	2686.87	-2910.50	-5.95	1768340.09	14561113.10	40°05'36.6332"N	80°32'33.3242"W	0.71	
9619.00	89.480	159.310	6614.73	2777.83	-2995.49	26.56	1768372.58	14561028.14	40°05'35.7916"N	80°32'32.9116"W	0.54	
9710.00	89.630	159.420	6615.44	2868.78	-3080.65	58.63	1768404.64	14560943.01	40°05'34.9485"N	80°32'32.5046"W	0.20	
9801.00	90.370	159.280	6615.44	2959.73	-3165.80	90.72	1768436.72	14560857.89	40°05'34.1053"N	80°32'32.0973"W	0.83	
9891.00	90.830	161.110	6614.50	3049.62	-3250.47	121.21	1768467.20	14560773.26	40°05'33.2671"N	80°32'31.7106"W	2.10	
9983.00	89.750	156.120	6614.03	3141.57	-3336.10	154.75	1768500.72	14560687.66	40°05'32.4191"N	80°32'31.2847"W	5.55	
10073.00	90.370	157.790	6613.94	3231.57	-3418.92	189.98	1768535.93	14560604.87	40°05'31.5990"N	80°32'30.8369"W	1.98	

REFERENCE WELLPATH IDENTIFICATION			
Operator	SWN PRODUCTION COMPANY, LLC	Well	Carl Rotter OHI 6H
Field	Ohio VW	API	47069003270000
Facility	Carl Rotter OHI Pad	Wellbore	Carl Rotter OHI 6H AWB
Slot	Slot 6H		

WELLPATH DATA (226 stations)												
MD [ft]	Inclination [°]	Azimuth [°]	TVD [ft]	Vert Sect [ft]	North [ft]	East [ft]	Grid East [US ft]	Grid North [US ft]	Latitude	Longitude	DLS [°/100ft]	Comments
10164.00	90.400	157.790	6613.33	3322.56	-3503.16	224.37	1768570.32	14560520.66	40°05'30.7647"N	80°32'30.3999"W	0.03	
10254.00	89.420	157.590	6613.47	3412.56	-3586.43	258.54	1768604.47	14560437.43	40°05'29.9402"N	80°32'29.9659"W	1.11	
10345.00	89.350	157.660	6614.45	3503.56	-3670.57	293.18	1768639.10	14560353.32	40°05'29.1069"N	80°32'29.5258"W	0.11	
10436.00	89.110	157.840	6615.67	3594.55	-3754.79	327.63	1768673.54	14560269.13	40°05'28.2729"N	80°32'29.0880"W	0.33	
10526.00	89.230	157.880	6616.97	3684.54	-3838.14	361.55	1768707.44	14560185.81	40°05'27.4474"N	80°32'28.6572"W	0.14	
10617.00	89.110	157.980	6618.29	3775.52	-3922.46	395.73	1768741.61	14560101.52	40°05'26.6124"N	80°32'28.2229"W	0.17	
10707.00	89.450	158.120	6619.42	3865.51	-4005.93	429.37	1768775.24	14560018.08	40°05'25.7859"N	80°32'27.7956"W	0.41	
10798.00	89.290	158.040	6620.42	3956.50	-4090.35	463.34	1768809.20	14559933.70	40°05'24.9499"N	80°32'27.3642"W	0.20	
10889.00	88.580	157.610	6622.11	4047.48	-4174.60	497.68	1768843.52	14559849.48	40°05'24.1156"N	80°32'26.9279"W	0.91	
10980.00	88.950	157.550	6624.07	4138.46	-4258.71	532.38	1768878.21	14559765.41	40°05'23.2827"N	80°32'26.4871"W	0.41	
11071.00	89.170	157.710	6625.57	4229.45	-4342.85	567.01	1768912.82	14559681.30	40°05'22.4495"N	80°32'26.0471"W	0.30	
11162.00	88.800	157.880	6627.18	4320.44	-4427.08	601.40	1768947.20	14559597.09	40°05'21.6153"N	80°32'25.6103"W	0.45	
11253.00	88.490	157.310	6629.33	4411.41	-4511.19	636.07	1768981.86	14559513.02	40°05'20.7823"N	80°32'25.1698"W	0.71	
11344.00	88.950	158.040	6631.36	4502.39	-4595.35	670.63	1769016.40	14559428.89	40°05'19.9489"N	80°32'24.7307"W	0.95	
11434.00	88.680	157.610	6633.23	4592.36	-4678.67	704.59	1769050.35	14559345.60	40°05'19.1238"N	80°32'24.2993"W	0.56	
11526.00	88.710	157.610	6635.32	4684.34	-4763.72	739.63	1769085.37	14559260.59	40°05'18.2816"N	80°32'23.8542"W	0.03	
11618.00	88.740	157.710	6637.37	4776.32	-4848.79	774.59	1769120.32	14559175.55	40°05'17.4391"N	80°32'23.4101"W	0.11	
11708.00	88.710	157.580	6639.37	4866.29	-4932.00	808.81	1769154.53	14559092.37	40°05'16.6150"N	80°32'22.9753"W	0.15	
11796.00	88.950	158.210	6641.17	4954.27	-5013.52	841.92	1769187.62	14559010.88	40°05'15.8078"N	80°32'22.5547"W	0.77	
11886.00	88.550	157.460	6643.13	5044.25	-5096.85	875.86	1769221.56	14558927.59	40°05'14.9826"N	80°32'22.1235"W	0.94	
11975.00	88.680	157.500	6645.28	5133.22	-5179.04	909.94	1769255.62	14558845.43	40°05'14.1687"N	80°32'21.6906"W	0.15	
12066.00	88.520	157.340	6647.51	5224.20	-5263.04	944.87	1769290.54	14558761.46	40°05'13.3368"N	80°32'21.2468"W	0.25	
12156.00	88.710	157.270	6649.68	5314.17	-5346.04	979.59	1769325.24	14558678.49	40°05'12.5147"N	80°32'20.8057"W	0.22	
12247.00	88.520	157.470	6651.88	5405.14	-5430.01	1014.59	1769360.23	14558594.55	40°05'11.6832"N	80°32'20.3609"W	0.30	
12338.00	88.770	157.860	6654.03	5496.12	-5514.16	1049.16	1769394.79	14558510.43	40°05'10.8498"N	80°32'19.9217"W	0.51	
12429.00	89.260	158.160	6655.60	5587.10	-5598.53	1083.23	1769428.85	14558426.10	40°05'10.0144"N	80°32'19.4890"W	0.63	
12520.00	88.580	157.810	6657.31	5678.08	-5682.88	1117.34	1769462.94	14558341.78	40°05'9.1791"N	80°32'19.0559"W	0.84	
12611.00	89.320	157.670	6658.98	5769.06	-5767.08	1151.80	1769497.39	14558257.61	40°05'8.3452"N	80°32'18.6181"W	0.83	
12702.00	89.050	157.950	6660.27	5860.05	-5851.33	1186.17	1769531.74	14558173.39	40°05'7.5109"N	80°32'18.1816"W	0.43	
12791.00	88.770	158.020	6661.97	5949.03	-5933.83	1219.52	1769565.09	14558090.93	40°05'6.6939"N	80°32'17.7579"W	0.32	

REFERENCE WELLPATH IDENTIFICATION			
Operator	SWN PRODUCTION COMPANY, LLC	Well	Carl Rotter OHI 6H
Field	Ohio VW	API	47069003270000
Facility	Carl Rotter OHI Pad	Wellbore	Carl Rotter OHI 6H AWB
Slot	Slot 6H		

WELLPATH DATA (226 stations)												
MD [ft]	Inclination [°]	Azimuth [°]	TVD [ft]	Vert Sect [ft]	North [ft]	East [ft]	Grid East [US ft]	Grid North [US ft]	Latitude	Longitude	DLS [°/100ft]	Comments
12883.00	88.980	158.620	6663.77	6041.01	-6019.30	1253.50	1769599.05	14558005.48	40°05'5.8475"N	80°32'17.3265"W	0.69	
12974.00	88.580	157.400	6665.71	6131.98	-6103.66	1287.57	1769633.11	14557921.16	40°05'5.0121"N	80°32'16.8938"W	1.41	
13065.00	88.490	157.930	6668.04	6222.95	-6187.81	1322.14	1769667.66	14557837.04	40°05'4.1788"N	80°32'16.4547"W	0.59	
13157.00	89.350	157.890	6669.77	6314.93	-6273.04	1356.73	1769702.24	14557751.85	40°05'3.3348"N	80°32'16.0154"W	0.94	
13248.00	89.380	157.850	6670.78	6405.92	-6357.33	1391.01	1769736.51	14557667.59	40°05'2.5001"N	80°32'15.5800"W	0.05	
13339.00	89.450	157.680	6671.71	6496.92	-6441.56	1425.44	1769770.93	14557583.39	40°05'1.6660"N	80°32'15.1426"W	0.20	
13430.00	89.230	157.780	6672.76	6587.91	-6525.76	1459.93	1769805.40	14557499.22	40°05'0.8321"N	80°32'14.7046"W	0.27	
13520.00	89.200	157.420	6673.99	6677.90	-6608.97	1494.22	1769839.68	14557416.05	40°05'0.0081"N	80°32'14.2690"W	0.40	
13611.00	89.230	157.520	6675.24	6768.89	-6693.01	1529.09	1769874.53	14557332.03	40°04'59.1758"N	80°32'13.8261"W	0.11	
13701.00	89.970	157.720	6675.86	6858.89	-6776.23	1563.35	1769908.78	14557248.85	40°04'58.3516"N	80°32'13.3908"W	0.85	
13793.00	89.480	157.840	6676.31	6950.89	-6861.40	1598.14	1769943.56	14557163.71	40°04'57.5082"N	80°32'12.9489"W	0.55	
13885.00	88.770	157.430	6677.71	7042.88	-6946.47	1633.14	1769978.55	14557078.68	40°04'56.6658"N	80°32'12.5043"W	0.89	
13975.00	89.230	157.520	6679.28	7132.86	-7029.59	1667.62	1770013.01	14556995.59	40°04'55.8426"N	80°32'12.0664"W	0.52	
14066.00	89.140	157.240	6680.58	7223.85	-7113.58	1702.61	1770047.99	14556911.63	40°04'55.0108"N	80°32'11.6218"W	0.32	
14158.00	89.600	158.000	6681.59	7315.85	-7198.64	1737.64	1770083.00	14556826.60	40°04'54.1684"N	80°32'11.1769"W	0.97	
14250.00	89.570	158.060	6682.25	7407.84	-7283.96	1772.06	1770117.41	14556741.31	40°04'53.3235"N	80°32'10.7398"W	0.07	
14342.00	89.170	158.040	6683.27	7499.83	-7369.29	1806.44	1770151.78	14556656.02	40°04'52.4785"N	80°32'10.3032"W	0.44	
14433.00	89.260	158.260	6684.51	7590.82	-7453.74	1840.31	1770185.63	14556571.60	40°04'51.6422"N	80°32'9.8732"W	0.26	
14525.00	89.510	158.500	6685.50	7682.80	-7539.26	1874.21	1770219.52	14556486.11	40°04'50.7953"N	80°32'9.4429"W	0.38	
14615.00	88.710	157.290	6686.90	7772.78	-7622.64	1908.07	1770253.37	14556402.77	40°04'49.9697"N	80°32'9.0128"W	1.61	
14706.00	89.510	157.690	6688.31	7863.77	-7706.69	1942.90	1770288.19	14556318.74	40°04'49.1372"N	80°32'8.5704"W	0.98	
14797.00	89.140	157.590	6689.38	7954.77	-7790.84	1977.52	1770322.79	14556234.62	40°04'48.3039"N	80°32'8.1307"W	0.42	
14888.00	89.110	157.720	6690.77	8045.75	-7875.00	2012.11	1770357.37	14556150.50	40°04'47.4704"N	80°32'7.6913"W	0.15	
14979.00	89.200	157.340	6692.12	8136.74	-7959.08	2046.89	1770392.13	14556066.45	40°04'46.6377"N	80°32'7.2496"W	0.43	
15069.00	89.200	157.500	6693.37	8226.74	-8042.18	2081.44	1770426.67	14555983.39	40°04'45.8148"N	80°32'6.8106"W	0.18	
15160.00	89.320	157.590	6694.55	8317.73	-8126.27	2116.20	1770461.42	14555899.33	40°04'44.9820"N	80°32'6.3692"W	0.16	
15251.00	89.170	157.620	6695.75	8408.72	-8210.40	2150.86	1770496.07	14555815.23	40°04'44.1488"N	80°32'5.9289"W	0.17	
15341.00	89.380	157.670	6696.89	8498.71	-8293.63	2185.09	1770530.28	14555732.03	40°04'43.3246"N	80°32'5.4942"W	0.24	
15432.00	89.450	157.570	6697.81	8589.71	-8377.77	2219.74	1770564.92	14555647.92	40°04'42.4913"N	80°32'5.0541"W	0.13	
15523.00	89.510	158.250	6698.64	8680.70	-8462.08	2253.96	1770599.12	14555563.64	40°04'41.6563"N	80°32'4.6196"W	0.75	

REFERENCE WELLPATH IDENTIFICATION			
Operator	SWN PRODUCTION COMPANY, LLC	Well	Carl Rotter OHI 6H
Field	Ohio VW	API	47069003270000
Facility	Carl Rotter OHI Pad	Wellbore	Carl Rotter OHI 6H AWB
Slot	Slot 6H		

WELLPATH DATA (226 stations)												
MD [ft]	Inclination [°]	Azimuth [°]	TVD [ft]	Vert Sect [ft]	North [ft]	East [ft]	Grid East [US ft]	Grid North [US ft]	Latitude	Longitude	DLS [°/100ft]	Comments
15613.00	89.380	157.980	6699.51	8770.69	-8545.59	2287.50	1770632.66	14555480.16	40°04'40.8294"N	80°32'4.1937"W	0.33	
15704.00	89.350	157.990	6700.52	8861.68	-8629.95	2321.61	1770666.75	14555395.83	40°04'39.9939"N	80°32'3.7606"W	0.03	
15795.00	89.320	157.780	6701.58	8952.67	-8714.25	2355.87	1770701.00	14555311.57	40°04'39.1591"N	80°32'3.3256"W	0.23	
15885.00	89.260	157.470	6702.69	9042.67	-8797.47	2390.13	1770735.24	14555228.38	40°04'38.3350"N	80°32'2.8905"W	0.35	
15976.00	89.750	157.190	6703.48	9133.66	-8881.44	2425.20	1770770.30	14555144.45	40°04'37.5034"N	80°32'2.4450"W	0.62	
16067.00	90.000	157.640	6703.68	9224.66	-8965.46	2460.15	1770805.23	14555060.46	40°04'36.6713"N	80°32'2.0011"W	0.57	
16157.00	89.380	157.350	6704.16	9314.66	-9048.60	2494.59	1770839.67	14554977.35	40°04'35.8479"N	80°32'1.5635"W	0.76	
16248.00	89.690	157.210	6704.90	9405.66	-9132.54	2529.74	1770874.80	14554893.44	40°04'35.0166"N	80°32'1.1171"W	0.37	
16341.00	90.000	157.620	6705.15	9498.66	-9218.41	2565.46	1770910.50	14554807.61	40°04'34.1662"N	80°32'0.6634"W	0.55	
16431.00	89.420	157.800	6705.61	9588.65	-9301.68	2599.59	1770944.63	14554724.37	40°04'33.3415"N	80°32'0.2299"W	0.67	
16523.00	89.780	157.560	6706.25	9680.65	-9386.78	2634.53	1770979.55	14554639.29	40°04'32.4987"N	80°31'59.7862"W	0.47	
16613.00	89.630	157.770	6706.71	9770.65	-9470.03	2668.73	1771013.74	14554556.08	40°04'31.6743"N	80°31'59.3519"W	0.29	
16705.00	88.860	157.410	6707.93	9862.64	-9555.07	2703.80	1771048.80	14554471.07	40°04'30.8321"N	80°31'58.9065"W	0.92	
16795.00	89.080	157.750	6709.54	9952.63	-9638.26	2738.12	1771083.10	14554387.92	40°04'30.0083"N	80°31'58.4706"W	0.45	
16886.00	89.020	157.110	6711.05	10043.61	-9722.28	2773.04	1771118.01	14554303.93	40°04'29.1762"N	80°31'58.0271"W	0.71	
16979.00	89.350	157.590	6712.38	10136.60	-9808.09	2808.86	1771153.81	14554218.14	40°04'28.3263"N	80°31'57.5722"W	0.63	
17070.00	89.260	157.820	6713.48	10227.60	-9892.29	2843.38	1771188.32	14554133.99	40°04'27.4925"N	80°31'57.1339"W	0.27	
17162.00	89.140	157.550	6714.76	10319.59	-9977.39	2878.30	1771223.23	14554048.92	40°04'26.6497"N	80°31'56.6903"W	0.32	
17253.00	89.320	158.310	6715.99	10410.57	-10061.71	2912.49	1771257.41	14553964.63	40°04'25.8146"N	80°31'56.2562"W	0.86	
17344.00	89.480	157.650	6716.94	10501.57	-10146.07	2946.61	1771291.51	14553880.30	40°04'24.9793"N	80°31'55.8231"W	0.75	
17435.00	89.140	157.670	6718.04	10592.56	-10230.23	2981.20	1771326.08	14553796.17	40°04'24.1457"N	80°31'55.3839"W	0.37	
17526.00	88.800	156.220	6719.67	10683.54	-10313.95	3016.83	1771361.70	14553712.49	40°04'23.3166"N	80°31'54.9312"W	1.64	
17617.00	89.720	157.930	6720.85	10774.52	-10397.75	3052.27	1771397.13	14553628.72	40°04'22.4866"N	80°31'54.4810"W	2.13	
17707.00	89.260	157.650	6721.65	10864.52	-10481.07	3086.29	1771431.13	14553545.43	40°04'21.6615"N	80°31'54.0490"W	0.60	
17798.00	89.480	157.600	6722.65	10955.51	-10565.21	3120.93	1771465.76	14553461.32	40°04'20.8282"N	80°31'53.6092"W	0.25	
17889.00	89.260	157.710	6723.65	11046.51	-10649.37	3155.52	1771500.34	14553377.19	40°04'19.9947"N	80°31'53.1699"W	0.27	
17980.00	88.950	157.450	6725.07	11137.49	-10733.48	3190.22	1771535.03	14553293.11	40°04'19.1617"N	80°31'52.7292"W	0.44	
18071.00	89.080	157.090	6726.64	11228.48	-10817.40	3225.38	1771570.17	14553209.22	40°04'18.3306"N	80°31'52.2827"W	0.42	
18161.00	89.320	158.030	6727.89	11318.47	-10900.58	3259.73	1771604.51	14553126.08	40°04'17.5068"N	80°31'51.8465"W	1.08	
18252.00	89.110	158.170	6729.14	11409.46	-10985.01	3293.67	1771638.44	14553041.68	40°04'16.6708"N	80°31'51.4156"W	0.28	

REFERENCE WELLPATH IDENTIFICATION			
Operator	SWN PRODUCTION COMPANY, LLC	Well	Carl Rotter OHI 6H
Field	Ohio VW	API	47069003270000
Facility	Carl Rotter OHI Pad	Wellbore	Carl Rotter OHI 6H AWB
Slot	Slot 6H		

WELLPATH DATA (226 stations) † = interpolated, ‡ = extrapolated station												
MD [ft]	Inclination [°]	Azimuth [°]	TVD [ft]	Vert Sect [ft]	North [ft]	East [ft]	Grid East [US ft]	Grid North [US ft]	Latitude	Longitude	DLS ["/100ft]	Comments
18342.00	89.350	157.860	6730.35	11499.45	-11068.45	3327.36	1771672.11	14552958.27	40°04'15.8444"N	80°31'50.9880"W	0.44	
18434.00	89.110	156.740	6731.59	11591.43	-11153.32	3362.86	1771707.60	14552873.44	40°04'15.0039"N	80°31'50.5371"W	1.24	
18525.00	88.370	154.800	6733.59	11682.37	-11236.28	3400.19	1771744.92	14552790.51	40°04'14.1821"N	80°31'50.0625"W	2.28	
18615.00	89.630	157.190	6735.16	11772.31	-11318.47	3436.80	1771781.51	14552708.35	40°04'13.3680"N	80°31'49.5972"W	3.00	
18706.00	89.170	156.740	6736.11	11863.30	-11402.21	3472.40	1771817.10	14552624.64	40°04'12.5386"N	80°31'49.1449"W	0.71	
18798.00	89.200	156.340	6737.42	11955.28	-11486.60	3509.03	1771853.71	14552540.28	40°04'11.7028"N	80°31'48.6796"W	0.44	
18889.00	89.260	156.940	6738.64	12046.26	-11570.13	3545.10	1771889.78	14552456.78	40°04'10.8754"N	80°31'48.2212"W	0.66	
18980.00	89.290	157.090	6739.79	12137.25	-11653.90	3580.64	1771925.29	14552373.05	40°04'10.0458"N	80°31'47.7699"W	0.17	
19070.00	89.260	156.820	6740.93	12227.24	-11736.71	3615.86	1771960.51	14552290.27	40°04'9.2256"N	80°31'47.3224"W	0.30	
19161.00	89.540	156.920	6741.88	12318.23	-11820.39	3651.61	1771996.24	14552206.62	40°04'8.3968"N	80°31'46.8683"W	0.33	
19252.00	88.890	156.210	6743.13	12409.21	-11903.88	3687.80	1772032.41	14552123.17	40°04'7.5699"N	80°31'46.4085"W	1.06	
19342.00	89.380	156.530	6744.49	12499.18	-11986.32	3723.87	1772068.47	14552040.75	40°04'6.7533"N	80°31'45.9502"W	0.65	
19433.00	89.380	156.840	6745.48	12590.16	-12069.88	3759.88	1772104.47	14551957.22	40°04'5.9256"N	80°31'45.4926"W	0.34	
19523.00	89.230	156.620	6746.57	12680.15	-12152.56	3795.43	1772140.01	14551874.58	40°04'5.1068"N	80°31'45.0410"W	0.30	
19584.00	89.480	157.010	6747.25	12741.14	-12208.63	3819.45	1772164.01	14551818.53	40°04'4.5514"N	80°31'44.7359"W	0.76	
19609.00‡	89.480	157.010	6747.48	12766.14	-12231.64	3829.21	1772173.77	14551795.53	40°04'4.3235"N	80°31'44.6119"W	0.00	Proj to TD: 19609'

TARGETS								
Name	TVD [ft]	North [ft]	East [ft]	Grid East [US ft]	Grid North [US ft]	Latitude	Longitude	Shape
Carl Rotter OHI 6H LP Rev 5	6596.00	-677.18	-954.32	1767392.07	14563345.56	40°05'58.7509"N	80°32'45.3803"W	point
Carl Rotter OHI 6H BHL Rev-3	6747.00	-12232.09	3829.10	1772173.67	14551795.08	40°04'4.3191"N	80°31'44.6133"W	point

REFERENCE WELLPATH IDENTIFICATION			
Operator	SWN PRODUCTION COMPANY, LLC	Well	Carl Rotter OHI 6H
Field	Ohio VW	API	47069003270000
Facility	Carl Rotter OHI Pad	Wellbore	Carl Rotter OHI 6H AWB
Slot	Slot 6H		

WELLPATH COMPOSITION - Ref Wellbore: Carl Rotter OHI 6H AWB Ref Wellpath: Carl Rotter OHI 6H AWB_awp 100' - 19584' Proj: 19609'					
Start MD [ft]	End MD [ft]	Positional Uncertainty Model	Log Name/Comment	Wellbore	Survey Date
26.00	858.00	Gyrodata 2015 - GC+WIR+DPIPE	1 Imported Gyro 100' - 858'	Carl Rotter OHI 6H AWB	3/23/2022
858.00	2147.00	OWSG MWD rev2 + HRGM	2 Tally MWD 966' - 2147'	Carl Rotter OHI 6H AWB	3/23/2022
2147.00	5707.00	OWSG MWD rev2 + HRGM	3 Tally MWD 2258' - 5707'	Carl Rotter OHI 6H AWB	3/23/2022
5707.00	19609.00	BH AutoTrak Curve/eXpress (2019) (HRGM, Short spacing)	4 BH MWD 5802' - 19584'	Carl Rotter OHI 6H AWB	3/23/2022