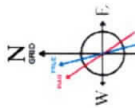


SOUTHWESTERN ENERGY

Location: Ohio County, WV
 Field: Ohio
 Facility: Dallas Hall OHI Pad
 Wellbore: Dallas Hall OHI 1H PWB
 Slot: Dallas Hall OHI 1H
 Well: Dallas Hall OHI 1H PWB

Plot reference wellpath is Dallas Hall OHI 1H PWP Rev-B.0
 Grid System: NAD83 / UTM Zone 17 North, US feet
 North Reference: Grid north
 True vertical depths are referenced to SDC 41 (KB)
 Measured depths are referenced to SDC 41 (KB)
 Scale: True distance
 SDC 41 (KB) to Mean Sea Level: 1300 feet
 Depths are in feet
 Mean Sea Level to Ground level (At Slot: Slot 1H): -1274 feet
 Created by: atjenjen on 2018-11-16
 Database: WA_MPL_EASTERONUS_Defn
 Coordinates are in feet referenced to Slot



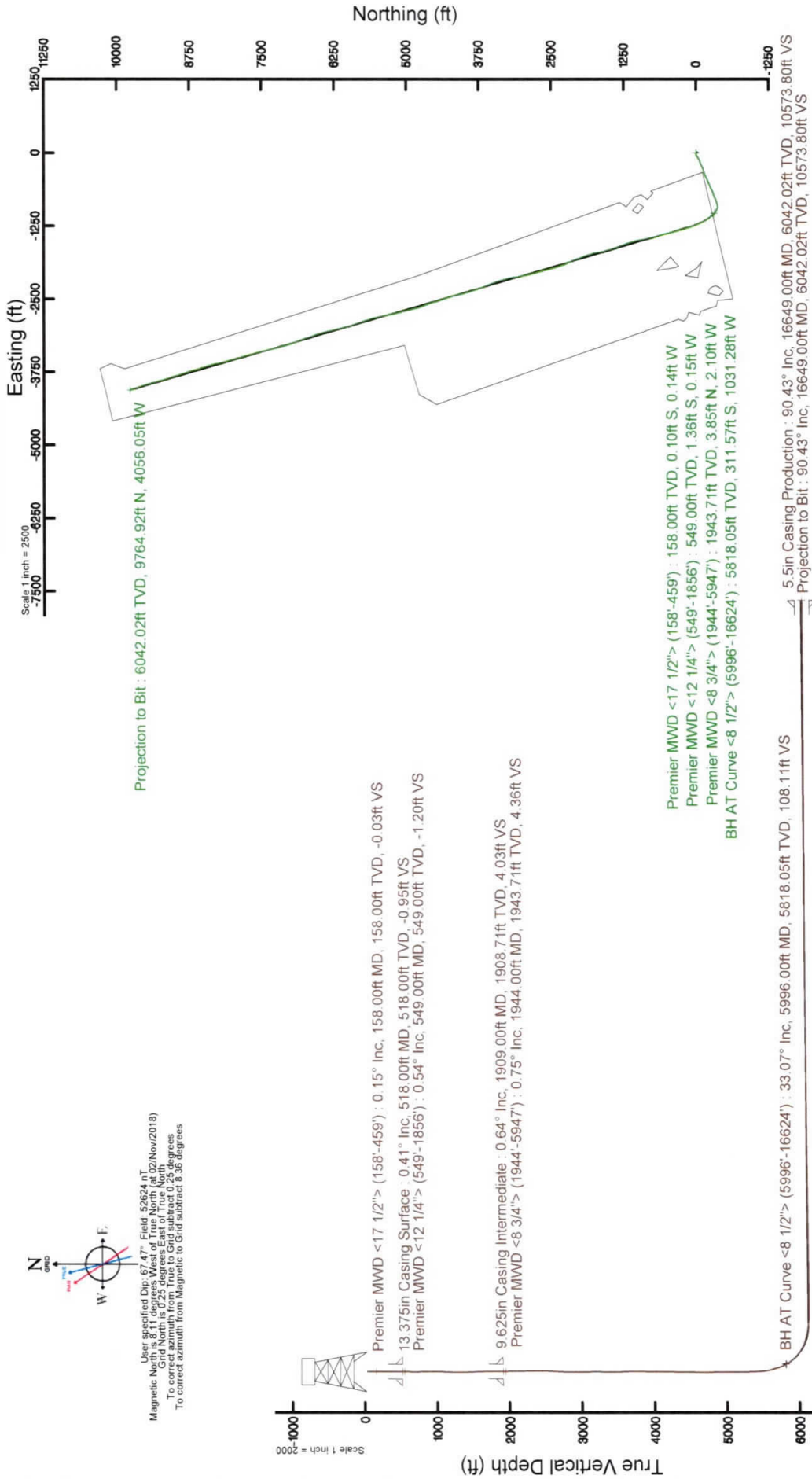
User specified Dip: 67.47° Field: 52624 nT
 Magnetic North is 8.11 degrees West of True North (at 02/Nov/2018)
 Grid North is 0.25 degrees East of True North
 To correct azimuth from Magnetic to Grid subtract 8.36 degrees

Location Information

Facility Name	Grid East (US ft)	Grid North (US ft)	Latitude	Longitude
Dallas Hall OHI Pad	1748601.815	14575539.433	40°08'00.176"N	80°36'46.588"W
Slot	Local N (ft)	Local E (ft)	Grid North (US ft)	Grid East (US ft)
Slot 1H	0.33	-0.03	1748601.790	14575539.760
Comment: Slot 18				
SDC 41 (KB) to Ground level (At Slot: Slot 1H)				26ft
Mean Sea Level to Ground level (At Slot: Slot 1H)				-1274ft
SDC 41 (KB) to Mean Sea Level				1300ft

Comments

API: 47-069-00281-0000
 BH Job #: 109479807
 Rig: SDC 41
 Duration: 11/02/2018 - 11/05/2018



Scale 1 inch = 2000

Vertical Section (ft)
 Azimuth 337.43° with reference 0.00 N, 0.00 E

Scale 1 inch = 2000

Actual Wellpath Report

Dallas Hall OHI 1H AWP Proj: 16649'

Page 1 of 10

REFERENCE WELLPATH IDENTIFICATION			
Operator	SOUTHWESTERN ENERGY	Slot	Slot 1H
Area	Ohio County, WV	Well	Dallas Hall OHI 1H
Field	Ohio	Wellbore	Dallas Hall OHI 1H AWB
Facility	Dallas Hall OHI Pad		

REPORT SETUP INFORMATION	
Projection System	NAD83 / UTM Zone 17 North, US feet
Software System	WellArchitect® 5.1
North Reference	Grid
User	Atenjen
Scale	0.999613
Report Generated	16/Nov/2018 at 14:20
Convergence at slot	0.25° East
Database/Source file	WA_MPL_EASTERNUS_Defn/Dallas_Hall_OHI_1H_AWP_Proj_16649_.xml

WELLPATH LOCATION						
	Local coordinates		Grid coordinates		Geographic coordinates	
	North[ft]	East[ft]	Easting[US ft]	Northing[US ft]	Latitude	Longitude
Slot Location	0.33	-0.03	1748601.79	14575539.76	40°08'00.179"N	80°36'46.588"W
Facility Reference Pt			1748601.82	14575539.43	40°08'00.176"N	80°36'46.588"W
Field Reference Pt			0.00	0.00	0°00'00.000"	85°29'19.478"W

WELLPATH DATUM	
Calculation method	Minimum curvature
Horizontal Reference Pt	Slot
Vertical Reference Pt	SDC 41 (KB)
MD Reference Pt	SDC 41 (KB)
Field Vertical Reference	Mean Sea Level
	SDC 41 (KB) to Facility Vertical Datum
	SDC 41 (KB) to Mean Sea Level
	SDC 41 (KB) to Ground Level at Slot (Slot 1H)
	Section Origin
	Section Azimuth
	1300.00ft
	1300.00ft
	26.00ft
	N 0.00, E 0.00 ft
	337.43°

Actual Wellpath Report

Dallas Hall OHI 1H AWP Proj: 16649'

Page 2 of 10

REFERENCE WELLPATH IDENTIFICATION

Operator	Slot	Slot 1H
SOUTHWESTERN ENERGY	Well	Dallas Hall OHI 1H
Area	Wellbore	Dallas Hall OHI 1H AWB
Field		
Facility		

WELLPATH DATA (195 stations) † = interpolated/extrapolated station

MD [ft]	Inclination [°]	Azimuth [°]	TVD [ft]	Vert Sect [ft]	North [ft]	East [ft]	Grid East [US ft]	Grid North [US ft]	Latitude	Longitude	Closure Dist [ft]	Closure Dir [°]	DLS [°/100ft]	Build Rate [°/100ft]	Turn Rate [°/100ft]
0.00†	0.000	236.410	0.00	0.00	0.00	0.00	1748601.79	14575539.76	40°08'00.179"N	80°36'46.588"W	0.00	0.000	0.00	0.00	0.00
26.00	0.000	236.410	26.00	0.00	0.00	0.00	1748601.79	14575539.76	40°08'00.179"N	80°36'46.588"W	0.00	0.000	0.00	0.00	0.00
158.00	0.150	236.410	158.00	-0.03	-0.10	-0.14	1748601.65	14575539.66	40°08'00.178"N	80°36'46.590"W	0.17	236.410	0.11	0.11	-93.63
220.00	0.130	187.950	220.00	-0.11	-0.21	-0.22	1748601.57	14575539.55	40°08'00.177"N	80°36'46.591"W	0.31	226.476	0.19	-0.03	-78.16
310.00	0.170	181.650	310.00	-0.32	-0.44	-0.24	1748601.55	14575539.32	40°08'00.175"N	80°36'46.591"W	0.50	208.277	0.05	0.04	-7.00
400.00	0.160	208.070	400.00	-0.52	-0.69	-0.30	1748601.49	14575539.07	40°08'00.172"N	80°36'46.592"W	0.75	203.681	0.08	-0.01	29.36
459.00	0.160	159.860	459.00	-0.65	-0.84	-0.31	1748601.48	14575538.92	40°08'00.171"N	80°36'46.592"W	0.90	200.433	0.22	0.00	-81.71
549.00	0.540	163.720	549.00	-1.20	-1.36	-0.15	1748601.64	14575538.40	40°08'00.166"N	80°36'46.590"W	1.37	186.293	0.42	0.42	4.29
610.00	0.780	154.390	609.99	-1.90	-2.01	0.11	1748601.90	14575537.75	40°08'00.159"N	80°36'46.587"W	2.02	176.886	0.43	0.39	-15.30
700.00	0.110	7.480	699.99	-2.44	-2.48	0.39	1748602.18	14575537.28	40°08'00.155"N	80°36'46.583"W	2.51	171.166	0.97	-0.74	-163.23
790.00	1.160	328.400	789.98	-1.46	-1.62	-0.08	1748601.71	14575538.14	40°08'00.163"N	80°36'46.589"W	1.62	182.845	1.20	1.17	-43.42
880.00	1.100	320.580	879.97	0.26	-0.18	-1.11	1748600.68	14575539.58	40°08'00.178"N	80°36'46.603"W	1.12	260.941	0.18	-0.07	-8.69
971.00	0.510	173.210	970.96	0.71	0.10	-1.61	1748600.18	14575539.86	40°08'00.180"N	80°36'46.609"W	1.62	273.414	1.71	-0.65	-161.95
1061.00	1.720	147.480	1060.94	-1.01	-1.44	-0.84	1748600.95	14575538.32	40°08'00.165"N	80°36'46.599"W	1.67	210.239	1.42	1.34	-28.59
1151.00	2.130	136.020	1150.89	-3.90	-3.78	1.05	1748602.84	14575535.98	40°08'00.142"N	80°36'46.575"W	3.93	164.518	0.62	0.46	-12.73
1242.00	1.150	129.670	1241.85	-6.28	-5.58	2.93	1748604.71	14575534.18	40°08'00.124"N	80°36'46.551"W	6.30	152.348	1.09	-1.08	-6.98
1335.00	0.610	3.630	1334.85	-6.66	-5.68	3.67	1748605.46	14575534.08	40°08'00.123"N	80°36'46.541"W	6.77	147.118	1.71	-0.58	-135.53
1428.00	1.410	340.890	1427.83	-5.07	-4.11	3.33	1748605.12	14575535.65	40°08'00.138"N	80°36'46.546"W	5.29	140.966	0.95	0.86	-24.45
1521.00	2.240	329.200	1520.79	-2.13	-1.47	2.03	1748603.82	14575538.29	40°08'00.165"N	80°36'46.562"W	2.50	125.901	0.97	0.89	-12.57
1613.00	1.440	332.640	1612.74	0.80	1.10	0.57	1748602.36	14575540.86	40°08'00.190"N	80°36'46.581"W	1.24	27.485	0.88	-0.87	3.74
1706.00	0.600	303.650	1705.72	3.17	2.41	-0.37	1748601.42	14575542.17	40°08'00.203"N	80°36'46.593"W	2.44	351.325	1.03	-0.90	-31.17
1799.00	0.460	320.330	1798.72	3.13	2.97	-1.01	1748600.78	14575542.73	40°08'00.209"N	80°36'46.601"W	3.14	341.185	0.22	-0.15	17.94
1856.00	0.490	317.800	1855.72	3.58	3.33	-1.32	1748600.47	14575543.08	40°08'00.212"N	80°36'46.605"W	3.58	338.331	0.06	0.05	-4.44
1944.00	0.750	295.160	1943.71	4.36	3.85	-2.10	1748599.70	14575543.61	40°08'00.217"N	80°36'46.615"W	4.38	331.437	0.40	0.30	-25.73
2005.00	0.680	304.710	2004.71	4.96	4.23	-2.75	1748599.04	14575543.98	40°08'00.221"N	80°36'46.624"W	5.04	326.900	0.23	-0.11	15.66
2098.00	2.220	271.420	2097.68	6.16	4.58	-5.01	1748596.78	14575544.34	40°08'00.225"N	80°36'46.653"W	6.79	312.464	1.82	1.66	-35.80
2191.00	4.580	260.580	2190.51	7.73	4.02	-10.47	1748591.32	14575543.78	40°08'00.219"N	80°36'46.723"W	11.22	291.003	2.62	2.54	-11.66
2283.00	7.000	256.760	2282.03	9.48	2.14	-19.56	1748582.24	14575541.89	40°08'00.201"N	80°36'46.840"W	19.67	276.232	2.66	2.63	-4.15
2376.00	9.270	249.640	2374.09	10.69	-1.77	-32.10	1748569.71	14575537.99	40°08'00.163"N	80°36'47.002"W	32.14	266.845	2.67	2.44	-7.66
2469.00	10.680	240.530	2465.69	9.94	-8.62	-46.62	1748555.19	14575531.15	40°08'00.096"N	80°36'47.189"W	47.41	269.630	2.27	1.52	-9.80

REFERENCE WELLPATH IDENTIFICATION

Operator	Slot	Slot 1H
SOUTHWESTERN ENERGY	Well	Dallas Hall OHI 1H
Ohio County, WV	Wellbore	Dallas Hall OHI 1H AWB
Ohio		
Facility		

WELLPATH DATA (195 stations)

MD	Inclination	Azimuth	TVD	Vert Sect	North	East	Grid East	Grid North	Latitude	Longitude	Closure Dist	Closure Dir	DLS	Build Rate	Turn Rate
[ft]	[°]	[°]	[ft]	[ft]	[ft]	[ft]	[US ft]	[US ft]			[ft]	[°]	[°/100ft]	[°/100ft]	[°/100ft]
2562.00	11.110	234.730	2557.01	6.93	-18.03	-61.44	1748540.37	14575521.74	40°08'00.004"N	80°36'47.380"W	64.03	253.646	1.27	0.46	-6.24
2655.00	11.170	231.730	2648.26	2.53	-28.78	-75.83	1748525.99	14575510.99	40°07'59.898"N	80°36'47.566"W	81.11	249.215	0.63	0.06	-3.23
2748.00	12.020	236.210	2739.37	-1.80	-39.75	-90.95	1748510.88	14575500.03	40°07'59.790"N	80°36'47.761"W	99.26	246.393	1.33	0.91	4.82
2840.00	13.670	243.570	2829.07	-4.39	-49.92	-108.65	1748493.18	14575489.86	40°07'59.691"N	80°36'47.990"W	119.57	245.325	2.52	1.79	8.00
2933.00	15.120	249.130	2919.15	-4.77	-59.13	-129.83	1748472.02	14575480.65	40°07'59.601"N	80°36'48.263"W	142.66	245.513	2.15	1.56	5.98
3026.00	16.600	250.500	3008.61	-3.70	-67.89	-153.68	1748448.17	14575471.90	40°07'59.515"N	80°36'48.571"W	168.01	246.168	1.64	1.59	1.47
3118.00	18.470	250.340	3096.33	-2.26	-77.18	-179.80	1748422.06	14575462.61	40°07'59.424"N	80°36'48.907"W	195.66	246.769	2.03	2.03	-0.17
3211.00	19.480	247.870	3184.27	-1.39	-87.97	-208.03	1748393.84	14575451.82	40°07'59.319"N	80°36'49.272"W	225.87	247.077	1.39	1.09	-2.66
3304.00	18.420	243.820	3272.24	-2.20	-100.30	-235.59	1748366.29	14575439.50	40°07'59.198"N	80°36'49.627"W	256.05	246.939	1.82	-1.14	-4.35
3397.00	17.020	244.300	3360.82	-3.86	-112.68	-261.04	1748340.85	14575427.12	40°07'59.077"N	80°36'49.955"W	284.32	246.651	1.51	-1.51	0.52
3490.00	17.550	248.660	3449.63	-4.31	-123.69	-286.36	1748315.54	14575416.12	40°07'58.969"N	80°36'50.282"W	311.94	246.639	1.50	0.57	4.69
3582.00	19.440	253.240	3536.87	-2.46	-133.15	-313.95	1748287.96	14575406.66	40°07'58.877"N	80°36'50.638"W	341.02	247.017	2.59	2.05	4.98
3675.00	20.280	252.580	3624.34	0.55	-142.44	-344.14	1748257.78	14575397.37	40°07'58.786"N	80°36'51.027"W	372.46	247.515	0.93	0.90	-0.71
3768.00	20.600	248.800	3711.49	2.39	-153.18	-374.78	1748227.16	14575386.64	40°07'58.682"N	80°36'51.422"W	404.87	247.769	1.46	0.34	-4.06
3861.00	18.420	246.390	3799.15	2.52	-164.99	-403.50	1748198.45	14575374.84	40°07'58.566"N	80°36'51.792"W	435.93	247.761	2.50	-2.34	-2.59
3954.00	17.470	242.430	3887.63	1.03	-177.33	-429.34	1748172.62	14575362.50	40°07'58.445"N	80°36'52.126"W	464.52	247.557	1.66	-1.02	-4.26
4046.00	16.770	245.150	3975.55	-0.70	-189.30	-453.62	1748148.34	14575350.53	40°07'58.328"N	80°36'52.439"W	491.54	247.349	1.16	-0.76	2.96
4139.00	17.690	249.330	4064.38	-0.76	-199.93	-479.02	1748122.96	14575339.91	40°07'58.224"N	80°36'52.767"W	519.07	247.346	1.66	0.99	4.49
4232.00	17.870	247.120	4152.94	-0.37	-210.46	-505.39	1748096.60	14575329.38	40°07'58.121"N	80°36'53.107"W	547.46	247.391	0.75	0.19	-2.38
4325.00	17.500	243.640	4241.55	-1.37	-222.22	-531.06	1748070.93	14575317.63	40°07'58.006"N	80°36'53.438"W	575.68	247.293	1.20	-0.40	-3.74
4417.00	17.790	246.170	4329.22	-2.60	-234.04	-556.31	1748045.69	14575305.81	40°07'57.890"N	80°36'53.764"W	603.54	247.183	0.89	0.32	2.75
4510.00	17.750	244.550	4417.78	-3.62	-245.87	-582.11	1748019.91	14575293.98	40°07'57.774"N	80°36'54.096"W	631.91	247.102	0.53	-0.04	-1.74
4602.00	18.360	245.820	4505.25	-4.73	-257.83	-607.99	1747994.04	14575282.03	40°07'57.657"N	80°36'54.430"W	660.40	247.019	0.79	0.66	1.38
4695.00	18.270	243.420	4593.54	-6.16	-270.36	-634.39	1747967.65	14575269.51	40°07'57.535"N	80°36'54.771"W	689.60	246.918	0.82	-0.10	-2.58
4788.00	17.440	245.960	4682.06	-7.54	-282.56	-660.15	1747941.89	14575257.31	40°07'57.415"N	80°36'55.103"W	718.08	246.828	1.22	-0.89	2.73
4880.00	18.490	253.170	4769.59	-6.44	-292.40	-686.71	1747915.34	14575247.47	40°07'57.319"N	80°36'55.446"W	746.37	246.936	2.67	1.14	7.84
4973.00	19.010	251.920	4857.65	-3.78	-301.37	-715.23	1747886.84	14575238.51	40°07'57.232"N	80°36'55.813"W	776.13	247.151	0.71	0.56	-1.34
5066.00	18.850	247.780	4945.63	-2.50	-311.75	-743.54	1747858.54	14575228.13	40°07'57.130"N	80°36'56.178"W	806.25	247.253	1.45	-0.17	-4.45
5158.00	18.800	243.140	5032.71	-3.52	-324.07	-770.52	1747831.57	14575215.82	40°07'57.010"N	80°36'56.526"W	835.90	247.189	1.63	-0.05	-5.04
5251.00	17.090	245.940	5121.18	-4.99	-336.41	-796.37	1747805.73	14575203.48	40°07'56.889"N	80°36'56.860"W	864.51	247.099	2.06	-1.84	3.01

Actual Wellpath Report

Dallas Hall OHI 1H AWP Proj: 16649'

Page 4 of 10

REFERENCE WELLPATH IDENTIFICATION

Operator	SOUTHWESTERN ENERGY	Slot	Slot 1H
Area	Ohio County, WV	Well	Dallas Hall OHI 1H
Field	Ohio	Wellbore	Dallas Hall OHI 1H AWB
Facility	Dallas Hall OHI Pad		

WELLPATH DATA (195 stations)

MD [ft]	Inclination [°]	Azimuth [°]	TVD [ft]	Vert Sect [ft]	North [ft]	East [ft]	Grid East [US ft]	Grid North [US ft]	Latitude	Longitude	Closure Dist [ft]	Closure Dir [°]	DLS [°/100ft]	Build Rate [°/100ft]	Turn Rate [°/100ft]
5344.00	16.420	252.050	5210.24	-4.29	-346.04	-821.35	1747780.76	14575193.86	40°07'56.795"N	80°36'57.182"W	891.27	247.154	2.03	-0.72	6.57
5437.00	17.730	253.480	5299.14	-1.74	-354.11	-847.44	1747754.68	14575185.78	40°07'56.716"N	80°36'57.518"W	918.45	247.322	1.48	1.41	1.54
5530.00	20.700	253.180	5386.95	1.40	-362.90	-876.75	1747725.38	14575177.00	40°07'56.631"N	80°36'57.896"W	948.89	247.515	3.20	3.19	-0.32
5622.00	19.220	257.480	5473.43	5.67	-370.89	-907.10	1747695.04	14575169.02	40°07'56.553"N	80°36'58.288"W	980.00	247.762	2.26	-1.61	4.67
5669.00	17.650	268.610	5518.03	9.60	-372.74	-921.78	1747680.36	14575167.17	40°07'56.535"N	80°36'58.477"W	994.29	247.983	8.18	-3.34	23.68
5715.00	17.660	289.880	5561.91	16.84	-370.53	-935.33	1747666.82	14575169.37	40°07'56.558"N	80°36'58.651"W	1006.05	248.389	13.95	0.02	46.24
5761.00	18.670	290.700	5605.61	26.59	-365.56	-948.78	1747653.38	14575174.34	40°07'56.607"N	80°36'58.824"W	1016.77	248.929	2.26	2.20	1.78
5808.00	20.590	298.050	5649.89	38.14	-359.01	-963.11	1747639.05	14575180.89	40°07'56.673"N	80°36'59.008"W	1027.85	249.557	6.65	4.09	15.64
5854.00	22.660	302.010	5692.65	51.62	-350.51	-977.77	1747624.40	14575189.39	40°07'56.757"N	80°36'59.196"W	1038.70	250.278	5.50	4.50	8.61
5901.00	26.130	304.430	5735.45	67.68	-339.85	-993.99	1747608.19	14575200.04	40°07'56.863"N	80°36'59.404"W	1050.48	251.124	7.68	7.38	5.15
5947.00	29.380	307.350	5776.15	85.94	-327.28	-1011.32	1747590.86	14575212.61	40°07'56.988"N	80°36'59.627"W	1062.96	252.068	7.66	7.07	6.35
5996.00	33.070	308.960	5818.05	108.11	-311.57	-1031.28	1747570.91	14575228.31	40°07'57.144"N	80°36'59.883"W	1077.32	253.189	7.72	7.53	3.29
6025.00	34.970	310.150	5842.08	122.45	-301.24	-1043.78	1747558.41	14575238.64	40°07'57.247"N	80°37'00.043"W	1086.38	253.902	6.94	6.55	4.10
6070.00	38.760	314.610	5878.08	146.91	-283.02	-1063.68	1747538.52	14575256.85	40°07'57.428"N	80°37'00.298"W	1100.69	255.100	10.31	8.42	9.91
6117.00	43.200	320.180	5913.57	175.86	-260.31	-1084.47	1747517.74	14575279.55	40°07'57.653"N	80°37'00.565"W	1115.28	256.502	12.23	9.45	11.85
6163.00	47.590	323.650	5945.87	207.41	-234.53	-1104.63	1747497.59	14575305.32	40°07'57.909"N	80°37'00.823"W	1129.25	258.013	10.95	9.54	7.54
6209.00	51.760	325.960	5975.63	241.62	-205.87	-1124.82	1747477.41	14575333.97	40°07'58.193"N	80°37'01.081"W	1143.50	259.628	9.84	9.07	5.02
6256.00	55.900	328.010	6003.37	278.92	-174.05	-1145.47	1747456.76	14575365.78	40°07'58.508"N	80°37'01.345"W	1158.62	261.360	9.49	8.81	4.36
6348.00	65.070	334.040	6048.67	358.37	-104.04	-1184.02	1747418.23	14575435.76	40°07'59.202"N	80°37'01.838"W	1188.58	264.978	11.48	9.97	6.55
6440.00	74.550	338.820	6090.41	444.57	-24.97	-1218.40	1747383.87	14575514.80	40°07'59.985"N	80°37'02.276"W	1218.65	268.826	11.40	10.30	5.20
6487.00	78.380	339.850	6091.40	490.23	17.77	-1234.51	1747367.76	14575557.53	40°08'00.408"N	80°37'02.481"W	1234.64	270.825	8.42	8.15	2.19
6533.00	79.570	340.540	6100.20	535.33	60.25	-1249.81	1747352.46	14575599.99	40°08'00.828"N	80°37'02.676"W	1251.26	272.760	2.98	2.59	1.50
6579.00	82.160	340.900	6107.50	580.67	103.12	-1264.81	1747337.48	14575642.84	40°08'01.252"N	80°37'02.866"W	1269.00	274.661	5.68	5.63	0.78
6625.00	82.090	341.330	6113.81	626.14	146.23	-1279.55	1747322.73	14575685.94	40°08'01.679"N	80°37'03.054"W	1287.88	276.520	0.94	-0.15	0.93
6672.00	84.270	342.320	6119.39	672.67	190.57	-1294.11	1747308.18	14575730.25	40°08'02.118"N	80°37'03.239"W	1308.07	278.377	5.09	4.64	2.11
6718.00	87.380	343.730	6122.74	718.32	234.44	-1307.50	1747294.80	14575774.11	40°08'02.552"N	80°37'03.409"W	1328.35	280.165	7.42	6.76	3.07
6811.00	90.310	345.830	6124.61	810.52	324.15	-1331.91	1747270.40	14575863.78	40°08'03.439"N	80°37'03.718"W	1370.78	283.678	3.88	3.15	2.26
6904.00	90.400	345.820	6124.03	902.52	414.31	-1354.68	1747247.64	14575953.91	40°08'04.331"N	80°37'04.006"W	1416.62	287.006	0.10	0.10	-0.01
6996.00	90.310	345.760	6123.46	993.54	503.50	-1377.26	1747225.06	14576043.06	40°08'05.214"N	80°37'04.292"W	1466.41	290.081	0.12	-0.10	-0.07
7089.00	90.370	344.320	6122.91	1085.72	593.34	-1401.27	1747201.07	14576132.87	40°08'06.103"N	80°37'04.596"W	1521.71	292.949	1.55	0.06	-1.55

REFERENCE WELLPATH IDENTIFICATION

Operator	Slot	Slot 1H
SOUTHWESTERN ENERGY	Well	Dallas Hall OHI 1H
Area	Wellbore	Dallas Hall OHI 1H AWB
Field		
Facility		

WELLPATH DATA (195 stations)

MD	Inclination	Azimuth	TVD	Vert Sect	North	East	Grid East	Grid North	Latitude	Longitude	Closure Dist	Closure Dir	DLS	Build Rate	Turn Rate
	[°]	[°]	[ft]	[ft]	[ft]	[ft]	[US ft]	[US ft]			[ft]	[°]	[°/100ft]	[°/100ft]	[°/100ft]
7181.00	90.340	344.890	6122.34	1177.00	682.04	-1425.69	1747176.65	14576221.53	40°08'06.980"N	80°37'04.906"W	1580.43	295.566	0.62	-0.03	0.62
7274.00	90.370	345.460	6121.77	1269.15	771.94	-1449.49	1747152.87	14576311.40	40°08'07.870"N	80°37'05.207"W	1642.23	298.038	0.61	0.03	0.61
7367.00	90.830	347.220	6120.79	1361.02	862.30	-1471.45	1747130.91	14576401.73	40°08'08.763"N	80°37'05.485"W	1705.50	300.371	1.96	0.49	1.89
7460.00	90.740	349.510	6119.52	1452.31	953.38	-1490.20	1747112.17	14576492.76	40°08'09.664"N	80°37'05.721"W	1769.07	302.610	2.46	-0.10	2.46
7552.00	90.770	347.790	6118.31	1542.54	1043.56	-1508.30	1747094.07	14576582.92	40°08'10.556"N	80°37'05.949"W	1834.12	304.679	1.87	0.03	-1.87
7645.00	90.740	343.390	6117.08	1634.57	1133.61	-1531.44	1747070.94	14576672.93	40°08'11.447"N	80°37'06.242"W	1905.36	306.510	4.73	-0.03	-4.73
7738.00	90.710	340.630	6115.90	1727.26	1222.05	-1560.16	1747042.24	14576761.33	40°08'12.322"N	80°37'06.607"W	1981.79	308.071	2.97	-0.03	-2.97
7831.00	90.710	339.080	6114.75	1820.17	1309.35	-1592.18	1747010.22	14576848.60	40°08'13.186"N	80°37'07.015"W	2061.42	309.433	1.67	0.00	-1.67
7922.00	90.650	340.010	6113.67	1911.10	1394.60	-1623.98	1746978.44	14576933.82	40°08'14.030"N	80°37'07.419"W	2140.62	310.654	1.02	-0.07	1.02
8015.00	90.710	344.160	6112.57	2003.76	1483.07	-1652.58	1746949.85	14577022.25	40°08'14.905"N	80°37'07.783"W	2220.48	311.906	4.46	0.06	4.46
8108.00	90.710	346.470	6111.41	2095.87	1573.02	-1676.15	1746926.29	14577112.17	40°08'15.795"N	80°37'08.081"W	2298.67	313.182	2.48	0.00	2.48
8200.00	90.740	347.360	6110.25	2186.60	1662.62	-1696.98	1746905.47	14577201.73	40°08'16.682"N	80°37'08.345"W	2375.72	314.414	0.97	0.03	0.97
8292.00	90.830	347.180	6108.99	2277.24	1752.35	-1717.25	1746885.21	14577291.43	40°08'17.569"N	80°37'08.601"W	2453.51	315.580	0.22	0.10	-0.20
8383.00	90.830	344.360	6107.67	2367.26	1840.54	-1739.62	1746862.85	14577379.59	40°08'18.442"N	80°37'08.884"W	2532.56	316.615	3.10	0.00	-3.10
8476.00	90.680	340.310	6106.44	2459.89	1929.13	-1767.83	1746834.65	14577468.14	40°08'19.318"N	80°37'09.242"W	2616.63	317.498	4.36	-0.16	-4.35
8567.00	90.680	340.000	6105.36	2550.78	2014.72	-1798.72	1746803.77	14577553.70	40°08'20.165"N	80°37'09.635"W	2700.83	318.242	0.34	0.00	-0.34
8658.00	90.650	338.700	6104.31	2641.72	2099.86	-1830.81	1746771.69	14577638.81	40°08'21.008"N	80°37'10.044"W	2785.91	318.916	1.43	-0.03	-1.43
8749.00	90.580	335.170	6103.33	2732.70	2183.57	-1866.45	1746736.06	14577722.48	40°08'21.837"N	80°37'10.498"W	2872.57	319.477	3.88	-0.08	-3.88
8841.00	90.740	337.180	6102.27	2824.67	2267.72	-1903.61	1746698.92	14577806.60	40°08'22.670"N	80°37'10.972"W	2960.79	319.989	2.19	0.17	2.18
8933.00	90.580	342.100	6101.21	2916.57	2353.94	-1935.61	1746666.93	14577892.79	40°08'23.523"N	80°37'11.379"W	3047.56	320.570	5.35	-0.17	5.35
9023.00	90.740	344.720	6100.17	3006.06	2440.18	-1961.30	1746634.25	14577978.99	40°08'24.377"N	80°37'11.705"W	3130.69	321.209	2.92	0.18	2.91
9115.00	90.740	346.000	6098.99	3097.17	2529.20	-1984.50	1746618.06	14578067.18	40°08'25.257"N	80°37'11.999"W	3214.82	321.881	1.46	0.00	1.46
9204.00	90.650	345.080	6097.91	3185.26	2615.38	-2006.68	1746595.89	14578154.13	40°08'26.110"N	80°37'12.280"W	3296.51	322.502	1.11	-0.10	-1.10
9296.00	90.620	343.830	6096.89	3276.56	2704.01	-2031.33	1746571.25	14578242.72	40°08'26.987"N	80°37'12.592"W	3382.01	323.085	1.36	-0.03	-1.36
9388.00	90.650	344.450	6095.87	3367.93	2792.50	-2056.47	1746546.11	14578331.18	40°08'27.862"N	80°37'12.911"W	3468.02	323.631	0.67	0.03	0.67
9479.00	90.650	348.040	6094.83	3457.83	2880.87	-2078.11	1746524.49	14578419.51	40°08'28.737"N	80°37'13.185"W	3552.18	324.195	3.94	0.00	3.95
9571.00	90.710	348.300	6093.74	3548.21	2970.91	-2096.97	1746505.64	14578509.52	40°08'29.627"N	80°37'13.423"W	3636.43	324.784	0.29	0.07	0.28
9663.00	90.710	350.050	6092.60	3638.28	3061.26	-2114.24	1746488.37	14578599.83	40°08'30.521"N	80°37'13.640"W	3720.40	325.369	1.90	0.00	1.90
9755.00	90.370	349.510	6091.73	3728.14	3151.80	-2130.57	1746472.05	14578690.34	40°08'31.416"N	80°37'13.845"W	3804.36	325.942	0.69	-0.37	-0.59
9847.00	90.620	346.860	6090.94	3818.52	3241.84	-2149.40	1746453.22	14578780.34	40°08'32.307"N	80°37'14.083"W	3889.66	326.455	2.89	0.27	-2.88

REFERENCE WELLPATH IDENTIFICATION

Operator	Slot	Slot 1H
SOUTHWESTERN ENERGY	Well	Dallas Hall OHI 1H
Ohio County, WV	Wellbore	Dallas Hall OHI 1H AWB
Ohio		
Facility		Dallas Hall OHI Pad

WELLPATH DATA (195 stations)

MD [ft]	Inclination [°]	Azimuth [°]	TVD [ft]	Vert Sect [ft]	North [ft]	East [ft]	Grid East [US ft]	Grid North [US ft]	Latitude	Longitude	Closure Dist [ft]	Closure Dir [°]	DLS ["/100ft]	Build Rate ["/100ft]	Turn Rate ["/100ft]
9940.00	90.770	345.170	6089.81	3910.46	3332.07	-2171.87	1746430.76	14578870.54	40°08'33.199"N	80°37'14.367"W	3977.40	326.903	1.82	0.16	-1.82
10032.00	90.890	342.920	6088.48	4001.84	3420.51	-2197.16	1746405.49	14578958.94	40°08'34.074"N	80°37'14.688"W	4065.39	327.285	2.45	0.13	-2.45
10125.00	90.400	338.190	6087.43	4094.67	3508.18	-2228.11	1746374.55	14579046.58	40°08'34.942"N	80°37'15.082"W	4155.93	327.580	5.11	-0.53	-5.09
10217.00	90.430	337.650	6086.77	4186.66	3593.43	-2262.69	1746339.98	14579131.79	40°08'35.786"N	80°37'15.522"W	4246.47	327.802	0.59	0.03	-0.59
10309.00	90.490	339.790	6086.03	4278.63	3679.15	-2296.08	1746306.61	14579217.48	40°08'36.634"N	80°37'15.947"W	4336.83	328.033	2.33	0.07	2.33
10402.00	90.430	341.040	6085.28	4371.50	3766.76	-2327.25	1746275.45	14579305.06	40°08'37.501"N	80°37'16.344"W	4427.71	328.291	1.35	-0.06	1.34
10495.00	90.460	341.090	6084.56	4464.31	3854.73	-2357.42	1746245.28	14579392.99	40°08'38.372"N	80°37'16.728"W	4518.45	328.551	0.06	0.03	0.05
10587.00	90.460	343.910	6083.82	4555.94	3942.46	-2385.09	1746217.63	14579480.69	40°08'39.240"N	80°37'17.079"W	4607.78	328.827	3.07	0.00	3.07
10680.00	90.590	346.480	6082.97	4648.07	4032.36	-2408.85	1746193.88	14579570.55	40°08'40.130"N	80°37'17.380"W	4697.07	329.147	2.77	0.14	2.76
10772.00	90.490	346.370	6082.10	4738.94	4121.79	-2430.44	1746172.29	14579659.94	40°08'41.014"N	80°37'17.653"W	4784.99	329.474	0.16	-0.11	-0.12
10863.00	90.550	343.520	6081.27	4829.14	4209.65	-2454.07	1746148.67	14579747.77	40°08'41.883"N	80°37'17.953"W	4872.74	329.759	3.13	0.07	-3.13
10956.00	90.490	341.930	6080.43	4921.74	4298.45	-2481.69	1746121.07	14579836.54	40°08'42.762"N	80°37'18.304"W	4963.41	330.000	1.71	-0.06	-1.71
11048.00	90.580	342.150	6079.57	5013.44	4385.96	-2510.06	1746092.71	14579924.02	40°08'43.628"N	80°37'18.664"W	5053.42	330.218	0.26	0.10	0.24
11138.00	90.400	343.920	6078.80	5103.00	4472.04	-2536.31	1746066.46	14580010.06	40°08'44.480"N	80°37'18.997"W	5141.21	330.440	1.98	-0.20	1.97
11231.00	90.150	342.140	6078.35	5195.55	4560.98	-2563.46	1746039.33	14580098.97	40°08'45.360"N	80°37'19.342"W	5232.01	330.662	1.93	-0.27	-1.91
11324.00	90.090	340.160	6078.16	5288.35	4648.99	-2593.50	1746009.29	14580186.94	40°08'46.231"N	80°37'19.724"W	5323.47	330.844	2.13	-0.06	-2.13
11416.00	90.370	339.940	6077.79	5380.25	4735.47	-2624.89	1745977.92	14580273.39	40°08'47.087"N	80°37'20.124"W	5414.31	331.000	0.39	0.30	-0.24
11509.00	90.340	343.430	6077.21	5472.98	4823.74	-2654.11	1745948.71	14580361.63	40°08'47.960"N	80°37'20.495"W	5505.71	331.180	3.75	-0.03	3.75
11602.00	90.340	347.210	6076.66	5565.08	4913.69	-2677.68	1745925.15	14580451.54	40°08'48.850"N	80°37'20.794"W	5595.92	331.412	4.06	0.00	4.06
11694.00	90.340	346.840	6076.12	5655.79	5003.34	-2698.33	1745904.51	14580541.15	40°08'49.737"N	80°37'21.055"W	5684.58	331.662	0.40	0.00	-0.40
11787.00	90.340	345.720	6075.56	5747.68	5093.68	-2720.39	1745882.46	14580631.46	40°08'50.631"N	80°37'21.334"W	5774.61	331.895	1.20	0.00	-1.20
11880.00	90.550	346.090	6075.84	5839.66	5183.88	-2743.04	1745859.82	14580721.62	40°08'51.523"N	80°37'21.620"W	5864.88	332.115	0.46	0.23	0.40
11973.00	90.550	346.120	6073.95	5931.59	5274.15	-2765.37	1745837.50	14580811.86	40°08'52.416"N	80°37'21.903"W	5955.16	332.331	0.03	0.00	0.03
12065.00	90.430	347.540	6073.16	6022.35	5363.73	-2786.33	1745816.54	14580901.40	40°08'53.302"N	80°37'22.168"W	6044.27	332.549	1.55	-0.13	1.54
12158.00	90.340	349.410	6072.54	6113.62	5454.85	-2804.91	1745797.97	14580992.49	40°08'54.203"N	80°37'22.402"W	6133.75	332.788	2.01	-0.10	2.01
12251.00	90.370	347.790	6071.96	6204.86	5546.01	-2823.29	1745779.60	14581083.61	40°08'55.105"N	80°37'22.634"W	6223.28	333.021	1.74	0.03	-1.74
12344.00	90.370	342.790	6071.36	6296.95	5635.93	-2846.90	1745756.00	14581173.50	40°08'55.994"N	80°37'22.933"W	6314.15	333.200	5.38	0.00	-5.38
12436.00	90.310	341.570	6070.81	6388.63	5723.51	-2875.05	1745727.86	14581261.05	40°08'56.861"N	80°37'23.291"W	6405.04	333.329	1.33	-0.07	-1.33
12529.00	90.280	341.400	6070.33	6481.40	5811.70	-2904.58	1745698.34	14581349.20	40°08'57.734"N	80°37'23.666"W	6497.11	333.445	0.19	-0.03	-0.18
12622.00	90.280	341.870	6069.88	6574.15	5899.96	-2933.88	1745669.05	14581437.43	40°08'58.607"N	80°37'24.039"W	6589.17	333.560	0.51	0.00	0.51



REFERENCE WELLPATH IDENTIFICATION

Operator	Slot	Slot 1H
SOUTHWESTERN ENERGY	Well	Dallas Hall OHI 1H
Area	Wellbore	Dallas Hall OHI 1H AWB
Field		
Facility		

WELLPATH DATA (195 stations)

MD [ft]	Inclination [°]	Azimuth [°]	TVD [ft]	Vert Sect [ft]	North [ft]	East [ft]	Grid East [US ft]	Grid North [US ft]	Latitude	Longitude	Closure Dist [ft]	Closure Dir [°]	DLS [°/100ft]	Build Rate [°/100ft]	Turn Rate [°/100ft]
12714.00	90.430	343.590	6069.31	6665.75	5987.81	-2961.19	1745641.75	14581525.24	40°08'59.476"N	80°37'24.386"W	6680.01	333.686	1.88	0.16	1.87
12807.00	90.340	344.830	6068.69	6758.10	6077.29	-2986.50	1745616.45	14581614.69	40°09'00.362"N	80°37'24.707"W	6771.46	333.830	1.34	-0.10	1.33
12900.00	90.340	346.490	6068.13	6850.13	6167.39	-3009.53	1745593.43	14581704.75	40°09'01.253"N	80°37'24.999"W	6862.51	333.989	1.78	0.00	1.78
12993.00	90.550	348.140	6067.41	6941.75	6258.12	-3029.95	1745573.01	14581795.44	40°09'02.150"N	80°37'25.257"W	6953.03	334.165	1.79	0.23	1.77
13085.00	90.710	347.710	6066.40	7032.20	6348.07	-3049.20	1745553.78	14581885.37	40°09'03.040"N	80°37'25.500"W	7042.42	334.343	0.50	0.17	-0.47
13178.00	90.580	343.910	6065.35	7124.19	6438.21	-3071.99	1745530.99	14581975.47	40°09'03.932"N	80°37'25.788"W	7133.56	334.492	4.09	-0.14	-4.09
13270.00	90.460	341.270	6064.52	7215.80	6525.99	-3099.51	1745503.48	14582063.21	40°09'04.800"N	80°37'26.138"W	7224.65	334.595	2.87	-0.13	-2.87
13363.00	90.490	341.690	6063.75	7308.57	6614.17	-3129.05	1745473.95	14582151.36	40°09'05.673"N	80°37'26.886"W	7316.98	334.682	0.45	0.03	0.45
13456.00	90.520	341.610	6062.93	7401.31	6702.44	-3158.33	1745444.69	14582239.59	40°09'06.547"N	80°37'27.281"W	7409.30	334.769	0.09	0.03	-0.09
13549.00	90.400	339.320	6062.18	7494.17	6790.07	-3189.42	1745413.61	14582327.59	40°09'07.414"N	80°37'27.682"W	7501.84	334.840	2.47	-0.13	-2.46
13641.00	90.490	340.630	6061.47	7586.07	6876.51	-3220.93	1745382.12	14582413.60	40°09'08.269"N	80°37'28.076"W	7593.47	334.902	1.43	0.10	1.42
13734.00	90.430	340.510	6060.72	7678.93	6964.21	-3251.86	1745351.19	14582501.26	40°09'09.137"N	80°37'28.450"W	7686.01	334.970	0.14	-0.06	-0.13
13827.00	90.430	342.640	6060.02	7771.68	7052.43	-3281.25	1745321.81	14582589.45	40°09'10.010"N	80°37'28.794"W	7778.40	335.049	2.29	0.00	2.29
13920.00	90.490	343.470	6059.27	7864.23	7141.39	-3308.36	1745294.72	14582678.38	40°09'10.891"N	80°37'29.094"W	7870.50	335.143	0.89	0.06	0.89
14011.00	90.370	346.340	6058.59	7954.44	7229.24	-3332.05	1745271.03	14582766.19	40°09'11.760"N	80°37'29.366"W	7960.18	335.254	3.16	-0.13	3.15
14104.00	90.310	346.960	6058.04	8046.24	7319.73	-3353.53	1745249.57	14582856.64	40°09'12.655"N	80°37'29.640"W	8051.37	335.385	0.67	-0.06	0.67
14194.00	90.400	345.190	6057.48	8135.21	7407.08	-3375.18	1745227.92	14582943.96	40°09'13.519"N	80°37'29.943"W	8139.82	335.503	1.97	0.10	-1.97
14287.00	90.340	345.060	6056.88	8227.37	7496.96	-3399.06	1745204.05	14583033.80	40°09'14.408"N	80°37'30.544"W	8231.52	335.611	0.15	-0.06	-0.14
14380.00	90.090	344.800	6056.53	8319.58	7586.76	-3423.24	1745179.88	14583123.57	40°09'15.297"N	80°37'30.249"W	8323.31	335.715	0.39	-0.27	-0.28
14472.00	90.060	345.890	6056.41	8410.70	7675.76	-3446.51	1745156.62	14583202.54	40°09'16.177"N	80°37'30.841"W	8414.02	335.819	1.19	-0.03	1.18
14565.00	90.180	344.940	6056.22	8502.80	7765.76	-3469.93	1745133.21	14583302.51	40°09'17.067"N	80°37'30.841"W	8505.73	335.924	1.03	0.13	-1.02
14658.00	90.310	343.790	6055.82	8595.11	7855.32	-3494.92	1745108.15	14583392.03	40°09'17.953"N	80°37'31.159"W	8597.74	336.015	1.24	0.14	-1.24
14750.00	90.220	343.200	6055.39	8686.60	7943.53	-3521.13	1745082.03	14583480.20	40°09'18.826"N	80°37'31.490"W	8688.96	336.094	0.65	-0.10	-0.64
14842.00	90.310	343.380	6054.97	8778.11	8031.64	-3547.58	1745055.59	14583568.28	40°09'19.698"N	80°37'31.826"W	8780.24	336.169	0.22	0.10	0.20
14935.00	90.490	345.400	6054.32	8870.42	8121.21	-3572.61	1745030.57	14583657.81	40°09'20.584"N	80°37'32.144"W	8872.29	336.255	2.18	0.19	2.17
15028.00	90.220	347.800	6053.74	8962.23	8211.67	-3594.16	1745009.03	14583748.23	40°09'21.479"N	80°37'32.416"W	8963.78	336.362	2.60	-0.29	2.58
15120.00	90.180	346.530	6053.42	9052.90	8301.36	-3614.59	1744988.60	14583837.90	40°09'22.366"N	80°37'32.675"W	9054.17	336.471	1.38	-0.04	-1.38
15213.00	90.280	343.890	6053.05	9145.03	8391.27	-3638.33	1744964.87	14583927.77	40°09'23.256"N	80°37'32.976"W	9146.09	336.559	2.84	0.11	-2.84
15306.00	90.460	342.960	6052.45	9237.52	8480.41	-3664.86	1744938.35	14584016.87	40°09'24.138"N	80°37'33.312"W	9238.43	336.628	1.02	0.19	-1.00
15397.00	90.460	343.420	6051.72	9328.06	8567.52	-3691.18	1744912.05	14584103.95	40°09'25.000"N	80°37'33.647"W	9328.83	336.692	0.51	0.00	0.51

Actual Wellpath Report

Dallas Hall OHI 1H AWP Proj: 16649'

Page 8 of 10

REFERENCE WELLPATH IDENTIFICATION

Operator	Slot	Slot 1H
SOUTHWESTERN ENERGY	Well	Dallas Hall OHI 1H
Ohio County, WV	Wellbore	Dallas Hall OHI 1H AWB
Ohio		
Facility		

WELLPATH DATA (195 stations)

MD	Inclination	Azimuth	TVD	Vert Sect	North	East	Grid East	Grid North	Latitude	Longitude	Closure Dist	Closure Dir	DLS	Build Rate	Turn Rate
[ft]	[°]	[°]	[ft]	[ft]	[ft]	[ft]	[US ft]	[US ft]	[°]	[°]	[ft]	[°]	[°/100ft]	[°/100ft]	[°/100ft]
15490.00	90.400	343.480	6051.02	9420.54	8656.66	-3717.67	1744885.57	14584193.06	40°09'25.882"N	80°37'33.983"W	9421.19	336.759	0.09	-0.06	0.06
15583.00	90.430	343.300	6050.34	9513.04	8745.78	-3744.25	1744858.99	14584282.14	40°09'26.763"N	80°37'34.320"W	9513.57	336.823	0.20	0.03	-0.19
15676.00	90.460	342.300	6049.62	9605.63	8834.61	-3771.75	1744831.50	14584370.94	40°09'27.642"N	80°37'34.670"W	9606.07	336.881	1.08	0.03	-1.08
15768.00	90.460	341.670	6048.88	9697.33	8922.10	-3800.20	1744803.06	14584458.39	40°09'28.508"N	80°37'35.032"W	9697.70	336.929	0.68	0.00	-0.68
15861.00	90.460	341.840	6048.14	9790.06	9010.42	-3829.32	1744773.96	14584546.68	40°09'29.382"N	80°37'35.402"W	9790.37	336.975	0.18	0.00	0.18
15954.00	90.430	343.110	6047.41	9882.70	9099.10	-3857.32	1744745.97	14584635.33	40°09'30.260"N	80°37'35.758"W	9882.94	337.027	1.37	-0.03	1.37
16046.00	90.550	344.340	6046.63	9974.14	9187.41	-3883.10	1744720.20	14584723.60	40°09'31.133"N	80°37'36.085"W	9974.32	337.088	1.34	0.13	1.34
16139.00	90.400	344.390	6045.86	10066.46	9276.97	-3908.17	1744695.14	14584813.12	40°09'32.019"N	80°37'36.403"W	10066.57	337.155	0.17	-0.16	0.05
16232.00	90.490	344.500	6045.13	10158.76	9366.56	-3933.10	1744670.21	14584902.68	40°09'32.906"N	80°37'36.719"W	10158.82	337.222	0.15	0.10	0.12
16323.00	90.490	344.040	6044.36	10249.11	9454.15	-3957.77	1744645.55	14584990.23	40°09'33.772"N	80°37'37.032"W	10249.14	337.284	0.51	0.00	-0.51
16416.00	90.370	343.430	6043.66	10341.54	9543.42	-3983.82	1744619.52	14585079.47	40°09'34.656"N	80°37'37.363"W	10341.55	337.342	0.67	-0.13	-0.66
16509.00	90.430	341.900	6043.01	10434.15	9632.19	-4011.53	1744591.82	14585168.21	40°09'35.534"N	80°37'37.715"W	10434.15	337.390	1.65	0.06	-1.65
16602.00	90.370	341.230	6042.36	10526.90	9720.42	-4040.94	1744562.42	14585256.40	40°09'36.407"N	80°37'38.089"W	10526.90	337.427	0.72	-0.06	-0.72
16624.00	90.430	341.250	6042.21	10548.85	9741.25	-4048.01	1744555.35	14585277.22	40°09'36.613"N	80°37'38.179"W	10548.85	337.434	0.29	0.27	0.09
16649.00	90.430	341.250	6042.02	10573.80	9764.92	-4056.05	1744547.32	14585300.88	40°09'36.847"N	80°37'38.281"W	10573.80	337.443	0.00	0.00	0.00

HOLE & CASING SECTIONS - Ref Wellbore: Dallas Hall OHI 1H AWB Ref Wellpath: Dallas Hall OHI 1H AWP Proj: 16649'

String/Diameter	Start MD	End MD	Interval	Start TVD	End TVD	Start N/S	Start E/W	End N/S	End E/W
	[ft]	[ft]	[ft]	[ft]	[ft]	[ft]	[ft]	[ft]	[ft]
17.5in Open Hole	26.00	518.00	492.00	26.00	518.00	0.00	0.00	-1.12	-0.22
13.375in Casing Surface	26.00	518.00	492.00	26.00	518.00	0.00	0.00	-1.12	-0.22
12.25in Open Hole	518.00	1909.00	1391.00	518.00	1908.71	-1.12	-0.22	3.65	-1.72
9.625in Casing Intermediate	26.00	1909.00	1883.00	26.00	1908.71	0.00	0.00	3.65	-1.72
8.75in Open Hole	1909.00	6019.00	4110.00	1908.71	5837.15	3.65	-1.72	-303.44	-1041.16
8.5in Open Hole	6019.00	16649.00	10630.00	5837.15	6042.02	-303.44	-1041.16	9764.92	-4056.05
5.5in Casing Production	26.00	16649.00	16623.00	26.00	6042.02	0.00	0.00	9764.92	-4056.05

Actual Wellpath Report

Dallas Hall OHI 1H AWP Proj: 16649'

Page 9 of 10

REFERENCE WELLPATH IDENTIFICATION			
Operator	SOUTHWESTERN ENERGY	Slot	Slot 1H
Area	Ohio County, WV	Well	Dallas Hall OHI 1H
Field	Ohio	Wellbore	Dallas Hall OHI 1H AWB
Facility	Dallas Hall OHI Pad		

TARGETS								
Name	TVD [ft]	North [ft]	East [ft]	Grid East [US ft]	Grid North [US ft]	Latitude	Longitude	Shape
Dallas Hall OHI 1H BHL Rev-2	6029.00	9770.22	-4061.58	1744541.79	14585306.19	40°09'36.900"N	80°37'38.352"W	point
Dallas Hall OHI 1H LP Rev-3	6116.00	141.20	-1273.20	1747329.08	14575680.91	40°08'01.629"N	80°37'02.972"W	point

WELLPATH COMPOSITION - Ref Wellbore: Dallas Hall OHI 1H AWB				Ref Wellpath: Dallas Hall OHI 1H AWP Proj: 16649'	
Start MD [ft]	End MD [ft]	Positional Uncertainty Model	Log Name/Comment	Wellbore	
26.00	459.00	OWSG MWD rev2 + HRGM	01_Premier MWD + HRGM <17.5"> (158'-459')	Dallas Hall OHI 1H AWB	
459.00	1856.00	OWSG MWD rev2 + HRGM	02_Premier MWD <12 1/4"> (549'-1856')	Dallas Hall OHI 1H AWB	
1856.00	5947.00	OWSG MWD rev2 + HRGM	03_Premier MWD + HRGM <8 3/4"> (1944'-5947')	Dallas Hall OHI 1H AWB	
5947.00	16624.00	BHI AutoTrak Curve (Short)	04_BH AT Curve <8 1/2"> (5996'-16624')	Dallas Hall OHI 1H AWB	
16624.00	16649.00	Blind Drilling (std)	Projection to bit	Dallas Hall OHI 1H AWB	

REFERENCE WELLPATH IDENTIFICATION

Operator	Slot	Slot 1H
SOUTHWESTERN ENERGY	Well	Dallas Hall OHI 1H
Ohio County, WV	Wellbore	Dallas Hall OHI 1H AWB
Ohio		
Dallas Hall OHI Pad		

COMMENTS

Wellpath general comments
 API: 47-069-00281-0000
 BH Job #: 109479807
 Rig: SDC 41
 Duration: 11/02/2018 - 11/05/2018