

SOUTHWESTERN ENERGY

Location: Ohio County, WV
 Field: Ohio
 Facility: Brian Dyko OHI Pad

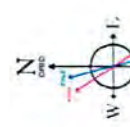
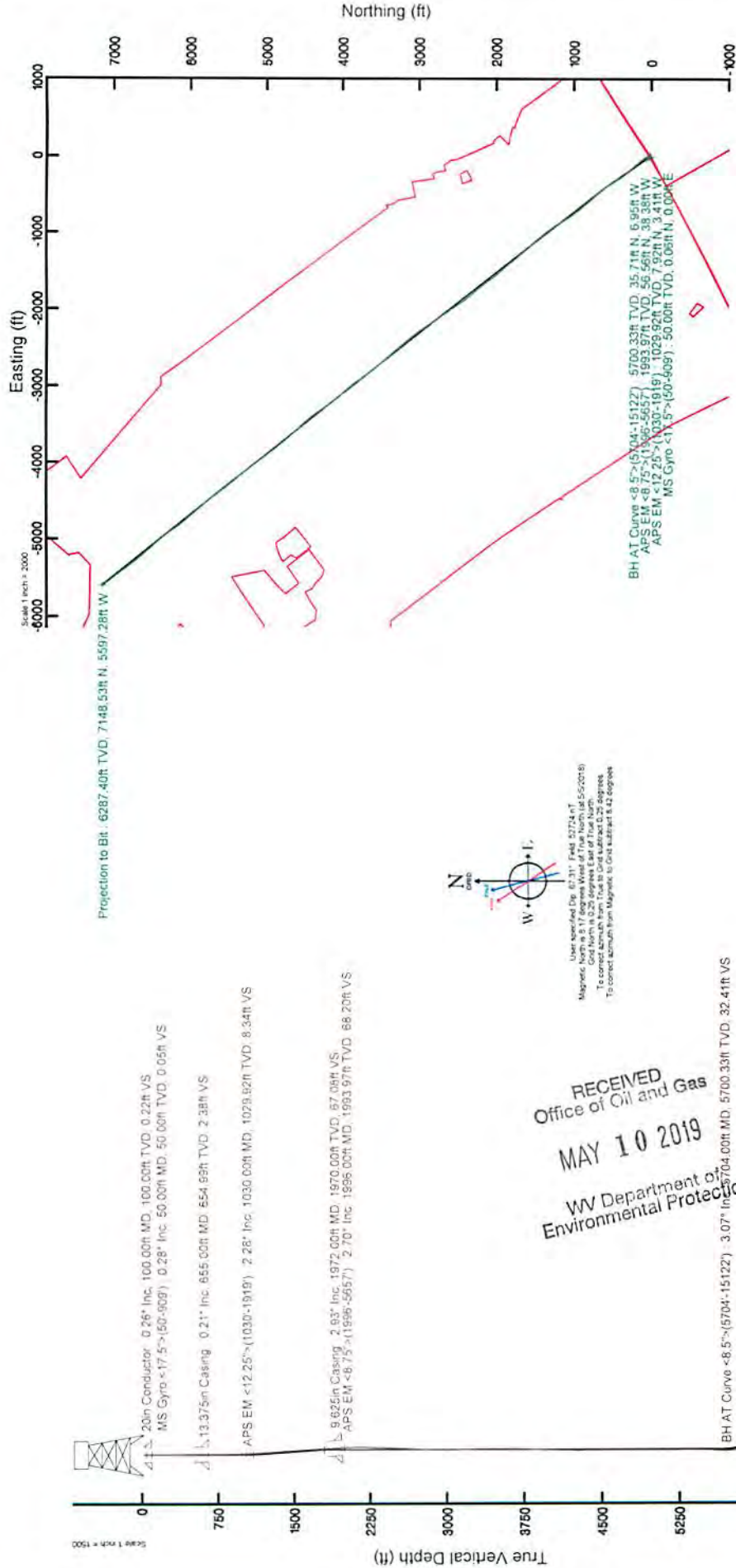
Slot: Slot 3H
 Well: Brian Dyko OH1 3H
 Wellbore: Brian Dyko OH1 3H PWB

Well reference wellbore is Brian Dyko OH1 3H PWB Rev-B-0
 Grid System: NAD83 / UTM Zone 17 North, US feet
 * * Wellbore was transformed from a different geoidic datum
 True vertical depths are referenced to SDC 42 (RKB)
 Measured depths are referenced to SDC 42 (RKB)
 North Reference: Grid north
 SDC 42 (RKB) to Mean Sea Level: 1248.4 feet
 Mean Sea Level to Ground level (At Slot 3H): -1222.4 feet
 Depths are in feet
 Coordinates are in feet referenced to Slot
 Created by: Promuize on 2018-05-25
 Database: WA_Pennsylvania

Location Information

Facility Name	Grid East (US ft)	Grid North (US ft)	Latitude	Longitude
Brian Dyko OHI Pad	1750181.170	14537893.350	47°01'47.8417N	80°36'28.3837W
Slot	Local E (ft)	Local N (ft)	Local East (US ft)	Local North (US ft)
Slot 3H	-5.00	-12.82	1750188.350	14537888.350
SDC 42 (RKB) to Ground level (At Slot 3H): -1222.4 ft				
Mean Sea Level to Ground level (At Slot 3H): 1248.4 ft				

API: 47-069-00264-0000
 Rig: SDC 42
 BH Job#: 9145106
 Duration: 05/03/2018 - 05/14/2018



RECEIVED
 Office of Oil and Gas
 MAY 10 2019
 WV Department of
 Environmental Protection

05/31/2019

REFERENCE WELLPATH IDENTIFICATION

Operator	SOUTHWESTERN ENERGY		Slot	Slot 3H
Area	Ohio County, WV		Well	Brian Dytko 3H
Field	Ohio		Wellbore	Brian Dytko OHI 3H AWB
Facility	Brian Dytko OHI Pad			

REPORT SETUP INFORMATION

Projection System	NAD83 / UTM Zone 17 North, US feet		Software System	WellArchitect® 5.0
North Reference	Grid		User	Thomsuzc
Scale	0.999614		Report Generated	5/25/2018 at 6:41:46 AM
Convergence at slot	0.26° East		Database/Source file	WA_Pennsylvania/Brian_Dytko_OHI_3H_AWP_Proj_15147_MD.xml

WELLPATH LOCATION

	Local coordinates		Grid coordinates		Geographic coordinates	
	North[ft]	East[ft]	Easting[US ft]	Northing[US ft]	Latitude	Longitude
Slot Location	-5.00	-12.82	1750168.35	14537888.35	40°01'47.892"N	80°36'28.548"W
Facility Reference Pt			1750181.17	14537893.35	40°01'47.941"N	80°36'28.383"W
Field Reference Pt			0.00	0.00	0°00'00.000"	85°29'19.478"W

WELLPATH DATUM

Calculation method	Minimum curvature	SDC 42 (RKB) to Facility Vertical Datum	1248.40ft
Horizontal Reference Pt	Slot	SDC 42 (RKB) to Mean Sea Level	1248.40ft
Vertical Reference Pt	SDC 42 (RKB)	SDC 42 (RKB) to Ground Level at Slot (Slot 3H)	26.00ft
MD Reference Pt	SDC 42 (RKB)	Section Origin	N 0.00, E 0.00 ft
Field Vertical Reference	Mean Sea Level	Section Azimuth	321.98°

05/31/2019

RECEIVED
Office of Oil and Gas
MAY 10 2019
WV Department of
Environmental Protection

REFERENCE WELLPATH IDENTIFICATION

Operator	SOUTHWESTERN ENERGY	Slot	Slot 3H
Area	Ohio County, WV	Well	Brian Dytko 3H
Field	Ohio	Wellbore	Brian Dytko OHI 3H AWB
Facility	Brian Dytko OHI Pad		

WELLPATH DATA (194 stations) † = interpolated/extrapolated station

MD (ft)	Inclination (°)	Azimuth (°)	TVD (ft)	Vert Sect (ft)	North (ft)	East (ft)	Grid East (US ft)	Grid North (US ft)	Latitude	Longitude	Closure Dist (ft)	Closure Dir (°)	DLS (°/100ft)	Build Rate (°/100ft)	Turn Rate (°/100ft)
0.00†	0.000	1.080	0.00	0.00	0.00	0.00	1750168.35	14537888.35	40°01'47.892"N	80°36'28.548"W	0.00	0.000	0.00	0.00	0.00
26.00	0.000	1.080	26.00	0.00	0.00	0.00	1750168.35	14537888.35	40°01'47.892"N	80°36'28.548"W	0.00	0.000	0.00	0.00	0.00
50.00	0.280	1.080	50.00	0.05	0.06	0.00	1750168.35	14537888.41	40°01'47.893"N	80°36'28.548"W	0.06	1.080	1.17	1.17	4.50
100.00	0.260	7.190	100.00	0.22	0.29	0.02	1750168.37	14537888.64	40°01'47.895"N	80°36'28.548"W	0.29	3.435	0.07	-0.04	12.22
150.00	0.320	14.860	150.00	0.38	0.54	0.07	1750168.42	14537888.89	40°01'47.898"N	80°36'28.547"W	0.55	7.126	0.14	0.12	15.34
200.00	0.230	5.700	200.00	0.54	0.78	0.11	1750168.46	14537889.13	40°01'47.900"N	80°36'28.547"W	0.78	8.317	0.20	-0.18	-18.32
250.00	0.220	339.400	250.00	0.71	0.97	0.09	1750168.44	14537889.32	40°01'47.902"N	80°36'28.547"W	0.97	5.302	0.21	-0.02	-52.60
300.00	0.290	315.470	300.00	0.92	1.15	-0.03	1750168.32	14537889.49	40°01'47.904"N	80°36'28.549"W	1.15	358.353	0.25	0.14	-47.86
350.00	0.310	323.160	350.00	1.18	1.34	-0.20	1750168.15	14537889.69	40°01'47.905"N	80°36'28.551"W	1.36	351.420	0.09	0.04	15.38
400.00	0.320	0.320	400.00	1.43	1.59	-0.28	1750168.07	14537889.94	40°01'47.908"N	80°36'28.552"W	1.62	349.916	0.40	0.02	74.32
450.00	0.330	1.840	450.00	1.65	1.88	-0.28	1750168.07	14537890.22	40°01'47.911"N	80°36'28.552"W	1.90	351.577	0.03	0.02	3.04
500.00	0.360	9.470	499.99	1.87	2.17	-0.25	1750168.18	14537890.52	40°01'47.914"N	80°36'28.551"W	2.19	353.513	0.11	0.06	15.26
550.00	0.460	15.680	549.99	2.09	2.52	-0.17	1750168.18	14537890.87	40°01'47.917"N	80°36'28.550"W	2.53	356.209	0.22	0.20	12.42
600.00	0.080	341.660	599.99	2.24	2.75	-0.12	1750168.23	14537891.10	40°01'47.919"N	80°36'28.550"W	2.75	357.420	0.79	-0.76	-68.04
783.00	0.530	327.030	782.99	3.21	3.58	-0.62	1750167.73	14537891.93	40°01'47.928"N	80°36'28.556"W	3.63	350.102	0.25	0.25	-7.99
861.00	0.750	344.260	860.98	4.04	4.37	-0.96	1750167.39	14537892.72	40°01'47.936"N	80°36'28.560"W	4.48	347.628	0.37	0.28	22.09
909.00	1.090	324.360	908.98	4.78	5.05	-1.31	1750167.04	14537893.40	40°01'47.942"N	80°36'28.565"W	5.21	345.443	0.96	0.71	-41.46
1030.00	2.280	323.540	1029.92	8.34	7.92	-3.41	1750164.94	14537896.27	40°01'47.971"N	80°36'28.592"W	8.62	336.691	0.98	0.98	-0.68
1114.00	3.110	315.960	1113.83	12.28	10.90	-5.99	1750162.36	14537899.25	40°01'48.000"N	80°36'28.625"W	12.44	331.216	1.07	0.99	-9.02
1198.00	2.990	328.920	1197.71	16.72	14.41	-8.70	1750159.65	14537902.76	40°01'48.035"N	80°36'28.659"W	16.84	328.876	0.83	-0.14	15.43
1293.00	4.950	316.240	1292.48	23.26	19.50	-12.82	1750155.54	14537907.84	40°01'48.086"N	80°36'28.712"W	23.33	326.679	2.25	2.06	-13.35
1367.00	4.080	313.040	1366.25	29.03	23.60	-16.95	1750151.41	14537911.94	40°01'48.126"N	80°36'28.765"W	29.06	324.313	1.22	-1.18	-4.32
1448.00	4.050	312.650	1447.05	34.70	27.51	-21.16	1750147.20	14537915.84	40°01'48.165"N	80°36'28.819"W	34.70	322.428	0.05	-0.04	-0.48
1531.00	4.320	319.760	1529.83	40.72	31.88	-25.34	1750143.02	14537920.21	40°01'48.208"N	80°36'28.872"W	40.72	321.523	0.70	0.33	8.57
1614.00	3.870	334.300	1612.62	46.58	36.79	-28.57	1750139.79	14537925.12	40°01'48.257"N	80°36'28.913"W	46.58	322.167	1.36	-0.54	17.52
1697.00	3.690	326.280	1695.44	51.98	41.53	-31.27	1750137.10	14537929.87	40°01'48.304"N	80°36'28.948"W	51.99	323.027	0.67	-0.22	-9.66
1780.00	3.220	335.700	1778.29	56.91	45.88	-33.71	1750134.65	14537934.21	40°01'48.347"N	80°36'28.979"W	56.93	323.694	0.89	-0.57	19.35
1864.00	2.900	335.770	1862.17	61.26	49.97	-35.55	1750132.81	14537938.30	40°01'48.388"N	80°36'29.003"W	61.32	324.568	0.38	-0.38	0.08
1919.00	3.460	334.400	1917.08	64.23	52.73	-36.84	1750131.52	14537941.06	40°01'48.415"N	80°36'29.019"W	64.33	325.061	1.03	1.02	-2.49
1996.00	2.700	342.950	1993.97	68.20	56.56	-38.38	1750129.99	14537944.89	40°01'48.453"N	80°36'29.038"W	68.35	325.844	1.15	-0.99	1.00

RECEIVED
Department of Oil and Gas
10 2019
Department of Environmental Protection

REFERENCE WELLPATH IDENTIFICATION

Operator	SOUTHWESTERN ENERGY	Slot	Slot 3H
Area	Ohio County, WV	Well	Brian Dytko 3H
Field	Ohio	Wellbore	Brian Dytko OHI 3H AWB
Facility	Brian Dytko OHI Pad		

WELLPATH DATA (194 stations)

MD (ft)	Inclination (°)	Azimuth (°)	TVD (ft)	Vert Sect (ft)	North (ft)	East (ft)	Grid East (US ft)	Grid North (US ft)	Latitude	Longitude	Closure Dist (ft)	Closure Dir (°)	DLS (°/100ft)	Built Rate (°/100ft)	Turn Rate (°/100ft)
2039.00	2.450	342.060	2036.93	70.01	58.40	-38.96	1750129.41	14537946.73	40°01'48.471"N	80°36'29.046"W	70.20	326.297	0.59	-0.58	-2.07
2121.00	0.770	356.120	2118.89	72.11	60.62	-39.53	1750128.83	14537948.95	40°01'48.493"N	80°36'29.053"W	72.37	326.891	2.09	-2.05	17.15
2204.00	1.470	111.920	2201.88	71.65	60.78	-38.58	1750129.78	14537949.11	40°01'48.495"N	80°36'29.041"W	71.99	327.593	2.33	0.84	139.52
2287.00	1.850	118.740	2284.85	69.49	59.74	-36.42	1750131.94	14537948.07	40°01'48.484"N	80°36'29.013"W	69.97	328.631	0.52	0.46	8.22
2372.00	1.570	117.050	2369.81	67.18	58.55	-34.18	1750134.18	14537946.88	40°01'48.472"N	80°36'28.984"W	67.80	329.724	0.33	-0.33	-1.99
2454.00	2.300	145.030	2451.76	64.52	56.69	-32.24	1750136.13	14537945.02	40°01'48.454"N	80°36'28.960"W	65.22	330.375	1.43	0.89	34.12
2538.00	3.300	161.740	2535.66	60.56	53.01	-30.51	1750137.85	14537941.34	40°01'48.418"N	80°36'28.938"W	61.17	330.076	1.52	1.19	19.89
2621.00	3.260	160.370	2618.53	56.07	48.52	-28.97	1750139.39	14537936.85	40°01'48.373"N	80°36'28.918"W	56.51	329.159	0.11	-0.05	-1.65
2703.00	3.380	158.510	2700.39	51.54	44.08	-27.30	1750141.06	14537932.41	40°01'48.329"N	80°36'28.897"W	51.85	328.224	0.20	0.15	-2.27
2785.00	2.880	170.460	2782.27	47.41	39.80	-26.08	1750142.28	14537928.13	40°01'48.287"N	80°36'28.881"W	47.58	326.765	1.00	-0.61	14.57
2874.00	1.120	205.960	2871.21	45.07	36.81	-26.09	1750142.27	14537925.14	40°01'48.257"N	80°36'28.882"W	45.11	324.675	2.33	-1.98	39.89
2956.00	0.870	259.440	2953.20	45.00	35.97	-27.05	1750141.31	14537924.31	40°01'48.249"N	80°36'28.894"W	45.01	323.060	1.13	-0.30	65.22
3038.00	1.070	258.160	3035.19	45.63	35.70	-28.41	1750139.95	14537924.04	40°01'48.246"N	80°36'28.912"W	45.63	321.489	0.25	0.24	-1.56
3120.00	0.840	327.650	3117.18	46.56	36.05	-29.48	1750138.88	14537924.39	40°01'48.250"N	80°36'28.925"W	46.57	320.726	1.35	-0.28	84.74
3205.00	1.820	353.320	3202.16	48.33	37.92	-29.97	1750138.39	14537926.26	40°01'48.268"N	80°36'28.931"W	48.33	321.677	1.32	1.15	30.20
3287.00	2.230	345.590	3284.11	50.91	40.76	-30.52	1750137.84	14537929.09	40°01'48.266"N	80°36'28.938"W	50.92	323.174	0.60	0.50	-9.43
3369.00	1.140	21.710	3366.07	52.78	43.06	-30.62	1750137.75	14537931.40	40°01'48.319"N	80°36'28.939"W	52.84	324.588	1.79	-1.33	44.05
3451.00	0.980	35.910	3448.06	53.39	44.39	-29.90	1750138.46	14537932.72	40°01'48.332"N	80°36'28.930"W	53.52	326.033	0.37	-0.20	17.32
3533.00	0.270	120.520	3530.05	53.40	44.86	-29.32	1750139.04	14537933.19	40°01'48.337"N	80°36'28.923"W	53.59	326.826	1.21	-0.87	103.18
3615.00	0.740	163.820	3612.05	52.73	44.25	-29.01	1750139.35	14537932.58	40°01'48.331"N	80°36'28.919"W	52.91	326.751	0.70	0.57	52.80
3698.00	1.280	177.160	3695.04	51.47	42.81	-28.82	1750139.55	14537931.14	40°01'48.317"N	80°36'28.916"W	51.60	326.055	0.71	0.65	16.07
3782.00	1.520	173.970	3779.01	49.76	40.77	-28.65	1750139.71	14537929.10	40°01'48.296"N	80°36'28.914"W	49.83	324.898	0.30	0.29	-3.80
3864.00	1.520	161.470	3860.98	47.81	38.65	-28.19	1750140.17	14537926.99	40°01'48.276"N	80°36'28.909"W	47.84	323.894	0.40	0.00	-15.24
3949.00	1.780	165.270	3945.95	45.54	36.31	-27.50	1750140.86	14537924.64	40°01'48.252"N	80°36'28.900"W	45.55	322.860	0.33	0.31	4.47
4031.00	1.700	168.800	4027.91	43.28	33.88	-26.94	1750141.42	14537922.22	40°01'48.228"N	80°36'28.893"W	43.29	321.513	0.16	-0.10	4.30
4114.00	1.680	180.160	4110.88	41.23	31.46	-26.70	1750141.60	14537919.80	40°01'48.204"N	80°36'28.890"W	41.26	319.674	0.40	-0.02	10.99
4198.00	1.250	183.160	4194.85	39.57	29.31	-26.76	1750141.66	14537917.65	40°01'48.183"N	80°36'28.891"W	39.69	317.609	0.52	-0.51	3.17
4281.00	0.170	203.690	4277.84	38.83	28.29	-26.86	1750141.50	14537916.63	40°01'48.173"N	80°36'28.892"W	39.01	316.495	1.32	-1.30	24.23
4364.00	0.660	325.150	4360.84	39.25	28.57	-27.18	1750141.18	14537916.91	40°01'48.176"N	80°36'28.896"W	39.44	316.434	0.92	0.59	146.34
4447.00	0.300	341.970	4443.84	39.93	29.17	-27.52	1750140.84	14537917.51	40°01'48.182"N	80°36'28.900"W	40.10	316.672	0.46	-0.43	20.77



Actual Wellpath Report

Brian Dytko OHI 3H AWP Proj: 15147'MD
Page 4 of 10



REFERENCE WELLPATH IDENTIFICATION

Operator	SOUTHWESTERN ENERGY	Slot	Slot 3H
Area	Ohio County, WV	Well	Brian Dytko 3H
Field	Ohio	Wellbore	Brian Dytko OHI 3H AWB
Facility	Brian Dytko OHI Pad		

WELLPATH DATA (194 stations)

MD (ft)	Inclination [°]	Azimuth [°]	TVD (ft)	Vert Sect (ft)	North (ft)	East (ft)	Grid East (US ft)	Grid North (US ft)	Latitude	Longitude	Closure Dist (ft)	Closure Dir [°]	DLS [°/100ft]	Build Rate [°/100ft]	Turn Rate [°/100ft]
4530.00	0.200	358.060	4526.83	40.25	29.52	-27.59	1750140.77	14537917.86	40°01'48.185"N	80°36'28.901"W	40.41	316.939	0.15	-0.12	19.39
4612.00	0.450	9.420	4608.83	40.59	29.99	-27.54	1750140.82	14537918.32	40°01'48.190"N	80°36'28.901"W	40.72	317.431	0.31	0.30	13.85
4695.00	0.880	8.310	4691.83	41.25	30.94	-27.40	1750140.96	14537919.28	40°01'48.199"N	80°36'28.899"W	41.33	318.473	0.52	0.52	-1.34
4780.00	1.790	7.340	4776.81	41.15	31.90	-26.01	1750142.35	14537920.23	40°01'48.209"N	80°36'28.881"W	41.16	320.801	1.97	1.07	80.04
4864.00	2.450	65.930	4860.75	40.18	32.94	-23.10	1750145.26	14537921.28	40°01'48.219"N	80°36'28.843"W	40.23	324.959	0.91	0.79	-12.39
4947.00	1.970	48.930	4943.69	39.83	34.60	-20.40	1750147.95	14537922.94	40°01'48.235"N	80°36'28.809"W	40.17	329.472	0.97	-0.58	-20.48
5027.00	1.200	31.240	5023.66	40.19	36.22	-18.93	1750149.42	14537924.56	40°01'48.251"N	80°36'28.790"W	40.87	332.403	1.13	-0.96	-22.11
5112.00	0.800	34.550	5108.65	40.69	37.47	-18.13	1750150.22	14537925.80	40°01'48.263"N	80°36'28.779"W	41.63	334.174	0.48	-0.47	3.89
5196.00	0.610	35.780	5192.64	40.99	38.32	-17.54	1750150.82	14537926.65	40°01'48.272"N	80°36'28.772"W	42.14	335.402	0.23	-0.23	1.46
5278.00	0.930	333.060	5274.63	41.76	39.26	-17.59	1750150.77	14537927.60	40°01'48.281"N	80°36'28.772"W	43.02	335.871	1.03	0.39	-76.49
5363.00	0.230	8.290	5359.63	42.56	40.05	-17.87	1750150.48	14537928.38	40°01'48.289"N	80°36'28.776"W	43.85	335.946	0.89	-0.82	41.45
5447.00	0.720	112.930	5443.63	42.21	40.01	-17.36	1750150.99	14537928.34	40°01'48.288"N	80°36'28.769"W	43.61	336.538	0.96	0.58	124.57
5531.00	1.840	112.780	5527.60	40.57	39.28	-15.63	1750152.72	14537928.71	40°01'48.281"N	80°36'28.747"W	42.28	338.296	1.33	1.33	-0.18
5614.00	3.690	120.300	5610.50	36.93	37.42	-12.10	1750156.25	14537925.75	40°01'48.263"N	80°36'28.702"W	39.32	342.079	2.27	2.23	9.06
5657.00	3.870	115.670	5653.41	34.34	36.09	-9.60	1750158.76	14537924.43	40°01'48.249"N	80°36'28.670"W	37.34	345.108	0.82	0.42	-10.77
5704.00	3.070	75.700	5700.33	32.41	35.71	-6.95	1750161.40	14537924.05	40°01'48.246"N	80°36'28.636"W	36.38	348.991	5.29	-1.70	-85.04
5773.00	6.330	346.530	5769.16	35.13	39.87	-6.04	1750162.31	14537928.21	40°01'48.287"N	80°36'28.624"W	40.33	351.383	10.13	4.72	-129.23
5859.00	14.470	334.600	5853.68	49.96	54.22	-11.77	1750156.59	14537942.54	40°01'48.429"N	80°36'28.696"W	55.48	347.756	9.74	9.47	-13.87
5944.00	21.090	334.260	5934.58	75.29	77.61	-22.97	1750145.38	14537965.93	40°01'48.660"N	80°36'28.839"W	80.94	343.510	7.79	7.79	-0.40
6030.00	27.100	321.730	6013.10	110.05	106.97	-41.86	1750126.51	14537995.28	40°01'48.951"N	80°36'29.080"W	114.87	338.631	9.14	6.99	-14.57
6116.00	33.260	319.820	6087.41	153.25	140.40	-69.23	1750099.15	14538028.70	40°01'49.283"N	80°36'29.430"W	156.54	333.752	7.25	7.16	-2.22
6203.00	41.710	318.640	6156.38	206.08	180.43	-103.81	1750064.58	14538068.71	40°01'49.680"N	80°36'29.873"W	208.16	330.085	9.75	9.71	-1.36
6288.00	49.660	318.790	6215.71	266.75	226.10	-143.90	1750024.50	14538114.36	40°01'50.133"N	80°36'30.385"W	268.01	327.524	9.35	9.35	0.18
6333.00	53.860	318.610	6243.56	302.03	252.64	-167.23	1750001.19	14538140.89	40°01'50.396"N	80°36'30.684"W	302.97	326.499	9.34	9.33	-0.40
6376.00	58.290	318.980	6267.55	337.65	279.48	-190.72	1749977.70	14538167.72	40°01'50.662"N	80°36'30.984"W	338.36	325.689	10.33	10.30	0.86
6419.00	62.640	320.910	6288.75	375.02	308.12	-214.78	1749953.65	14538196.35	40°01'50.947"N	80°36'31.292"W	375.59	325.120	10.84	10.12	0.99
6464.00	64.680	322.170	6308.71	415.35	339.69	-239.86	1749928.58	14538227.91	40°01'51.260"N	80°36'31.613"W	415.84	324.774	5.18	4.53	2.80
6508.00	67.180	324.470	6326.66	455.50	371.91	-263.85	1749904.61	14538260.12	40°01'51.579"N	80°36'31.919"W	456.00	324.647	7.42	5.68	6.33
6552.00	71.500	326.440	6342.18	496.59	405.82	-287.18	1749881.28	14538294.01	40°01'51.915"N	80°36'32.217"W	497.15	324.715	10.67	9.82	4.48
6597.00	77.920	327.810	6354.04	539.79	442.26	-310.72	1749857.75	14538330.44	40°01'52.276"N	80°36'32.518"W	540.50	324.909	14.57	14.27	2.94

REFERENCE WELLPATH IDENTIFICATION

Operator	Slot	Slot 3H
SOUTHWESTERN ENERGY	Well	Brian Dytko 3H
Area	Wellbore	Brian Dytko OHI 3H AWB
Field		
Facility		

WELLPATH DATA (194 stations)

MD [ft]	Inclination [°]	Azimuth [°]	TVD [ft]	Vert Sect [ft]	North [ft]	East [ft]	Grid East [US ft]	Grid North [US ft]	Latitude	Longitude	Closure Dist [ft]	Closure Dir [°]	DLS [°/100ft]	Build Rate [°/100ft]	Turn Rate [°/100ft]
6640.00	82.850	327.670	6361.22	581.96	478.10	-333.34	1749835.14	14538366.26	40°01'52.631"N	80°36'32.806"W	582.83	325.115	11.47	11.47	-0.33
6682.00	88.950	326.950	6364.22	623.65	513.34	-355.96	1749812.53	14538401.49	40°01'52.981"N	80°36'33.095"W	624.68	325.262	14.62	14.52	-1.71
6727.00	90.060	325.620	6364.61	668.52	550.77	-380.93	1749787.56	14538438.90	40°01'53.352"N	80°36'33.414"W	669.67	325.331	3.85	2.47	-2.96
6816.00	90.090	321.350	6364.50	757.47	622.28	-433.88	1749734.61	14538510.39	40°01'54.061"N	80°36'34.091"W	758.61	325.114	4.80	2.03	-4.80
6902.00	90.310	317.960	6364.19	843.39	687.82	-489.55	1749678.99	14538575.90	40°01'54.711"N	80°36'34.803"W	844.24	324.559	3.95	0.26	-3.94
6989.00	90.000	317.650	6363.96	930.16	752.27	-547.98	1749620.58	14538640.33	40°01'55.350"N	80°36'35.550"W	930.70	323.929	0.50	-0.36	-0.36
7075.00	89.910	319.180	6364.03	1015.99	816.60	-605.06	1749563.53	14538704.63	40°01'55.988"N	80°36'36.280"W	1016.33	323.463	1.78	-0.10	1.78
7160.00	90.150	319.210	6363.98	1100.89	880.93	-660.61	1749508.00	14538768.94	40°01'56.627"N	80°36'36.991"W	1101.11	323.134	0.28	0.28	0.04
7246.00	91.080	321.780	6363.06	1186.85	947.28	-715.31	1749453.32	14538835.26	40°01'57.285"N	80°36'37.690"W	1187.01	322.943	3.18	1.08	2.99
7331.00	90.710	322.070	6361.73	1271.84	1014.18	-767.72	1749400.93	14538902.14	40°01'57.948"N	80°36'38.360"W	1271.99	322.875	0.55	-0.44	0.34
7418.00	90.860	329.290	6360.54	1358.59	1085.98	-816.73	1749351.93	14538973.91	40°01'58.660"N	80°36'38.987"W	1358.83	323.054	8.30	0.17	8.30
7503.00	90.250	328.380	6359.71	1442.98	1158.71	-860.72	1749307.97	14539046.61	40°01'59.380"N	80°36'39.548"W	1443.41	323.394	1.29	-0.72	-1.07
7591.00	89.820	324.430	6359.66	1530.70	1232.00	-909.40	1749259.30	14539119.87	40°02'00.107"N	80°36'40.170"W	1531.28	323.567	4.52	-0.49	-4.49
7675.00	89.880	322.890	6359.88	1614.66	1299.66	-959.18	1749209.55	14539187.50	40°02'00.777"N	80°36'40.806"W	1615.28	323.572	1.83	0.07	-1.83
7760.00	90.520	321.710	6359.58	1699.65	1366.91	-1011.15	1749157.59	14539254.73	40°02'01.444"N	80°36'41.470"W	1700.26	323.508	1.58	0.75	-1.39
7846.00	90.460	320.360	6358.85	1785.64	1433.77	-1065.23	1749103.53	14539321.57	40°02'02.107"N	80°36'42.162"W	1786.18	323.389	1.57	-0.07	-1.57
7931.00	90.490	318.090	6358.14	1870.53	1498.14	-1120.74	1749048.05	14539385.90	40°02'02.746"N	80°36'42.872"W	1870.95	323.200	2.67	0.04	-2.67
8017.00	90.490	317.170	6357.41	1956.28	1561.67	-1178.69	1748990.12	14539449.41	40°02'03.376"N	80°36'43.613"W	1956.56	322.956	1.07	0.00	-1.07
8103.00	90.370	319.180	6356.76	2042.08	1625.75	-1236.04	1748932.79	14539513.47	40°02'04.012"N	80°36'44.347"W	2042.27	322.755	2.34	-0.14	2.34
8191.00	90.490	319.510	6356.10	2129.99	1692.51	-1293.37	1748875.48	14539580.20	40°02'04.674"N	80°36'45.080"W	2130.12	322.614	0.40	0.14	0.37
8279.00	90.430	321.680	6355.40	2217.95	1760.50	-1349.22	1748819.65	14539648.17	40°02'05.348"N	80°36'45.794"W	2218.06	322.534	2.47	-0.07	2.47
8367.00	91.080	319.520	6354.24	2305.91	1828.49	-1405.07	1748763.82	14539716.13	40°02'06.023"N	80°36'46.509"W	2305.99	322.460	2.56	0.74	-2.45
8452.00	91.050	316.180	6352.66	2390.67	1891.49	-1462.10	1748706.82	14539779.10	40°02'06.648"N	80°36'47.238"W	2390.70	322.296	3.93	-0.04	-3.93
8538.00	90.950	318.160	6351.15	2476.35	1954.55	-1520.55	1748648.39	14539842.14	40°02'07.273"N	80°36'47.986"W	2476.35	322.119	2.30	-0.12	2.30
8623.00	91.020	323.330	6349.69	2561.28	2020.33	-1574.31	1748594.65	14539907.90	40°02'07.926"N	80°36'48.674"W	2561.29	322.073	6.08	0.08	6.08
8711.00	91.350	323.170	6347.87	2649.24	2090.83	-1626.95	1748542.03	14539978.37	40°02'08.624"N	80°36'49.346"W	2649.25	322.112	0.42	0.37	-0.88
8798.00	91.050	322.710	6346.05	2736.21	2160.24	-1679.37	1748489.63	14540047.75	40°02'09.313"N	80°36'50.016"W	2736.22	322.139	0.63	-0.34	-0.83
8883.00	91.050	320.220	6344.49	2821.19	2226.71	-1732.31	1748436.71	14540114.20	40°02'09.972"N	80°36'50.693"W	2821.20	322.118	2.93	0.00	-2.93
8965.00	91.080	319.280	6342.97	2903.11	2289.29	-1785.28	1748383.76	14540176.75	40°02'10.592"N	80°36'51.371"W	2903.11	322.051	1.15	0.04	-1.15
9049.00	91.080	320.510	6341.39	2987.04	2353.52	-1839.38	1748329.68	14540240.96	40°02'11.230"N	80°36'52.063"W	2987.04	321.991	1.46	0.00	-1.46

REFERENCE WELLPATH IDENTIFICATION

Operator	SOUTHWESTERN ENERGY	Slot	Slot 3H
Area	Ohio County, WV	Well	Brian Dytko 3H
Field	Ohio	Wellbore	Brian Dytko OHI 3H AWB
Facility	Brian Dytko OHI Pad		

WELLPATH DATA (194 stations)

MD [ft]	Inclination [°]	Azimuth [°]	TVD [ft]	Vert Sect [ft]	North [ft]	East [ft]	Grid East [US ft]	Grid North [US ft]	Latitude	Longitude	Closure Dist [ft]	Closure Dir [°]	DLS [°/100ft]	Build Rate [°/100ft]	Turn Rate [°/100ft]
9133.00	90.980	323.270	6339.88	3071.02	2419.60	-1891.21	1748277.87	14540307.01	40°02'11.885"N	80°36'52.726"W	3071.02	321.988	3.29	-0.12	3.29
9216.00	91.050	326.690	6338.40	3153.88	2487.55	-1938.83	1748230.27	14540374.93	40°02'12.568"N	80°36'53.334"W	3153.88	322.067	4.12	0.08	4.12
9298.00	91.050	326.650	6336.90	3235.59	2556.05	-1983.88	1748185.24	14540443.41	40°02'13.237"N	80°36'53.909"W	3235.61	322.183	0.05	0.00	-0.05
9382.00	91.110	324.700	6335.32	3319.40	2625.41	-2031.81	1748137.91	14540512.74	40°02'13.925"N	80°36'54.514"W	3319.44	322.271	2.32	0.07	-2.32
9465.00	91.140	325.090	6333.69	3402.27	2693.30	-2078.95	1748090.20	14540580.60	40°02'14.598"N	80°36'55.124"W	3402.34	322.335	0.47	0.04	0.47
9549.00	91.110	325.020	6332.04	3486.13	2762.14	-2127.06	1748042.12	14540649.42	40°02'15.280"N	80°36'55.739"W	3486.23	322.401	0.09	-0.04	-0.08
9634.00	90.620	324.470	6330.76	3571.03	2831.54	-2176.12	1747993.08	14540718.79	40°02'15.968"N	80°36'56.366"W	3571.15	322.457	0.87	-0.58	-0.65
9718.00	91.080	325.780	6329.51	3654.89	2900.44	-2224.14	1747945.07	14540787.67	40°02'16.651"N	80°36'56.979"W	3655.05	322.518	1.65	0.55	1.56
9802.00	93.600	326.770	6326.08	3738.57	2970.24	-2270.74	1747898.50	14540857.44	40°02'17.343"N	80°36'57.574"W	3738.79	322.602	3.22	3.00	1.18
9885.00	91.350	322.510	6322.49	3821.38	3037.85	-2318.71	1747850.54	14540925.02	40°02'18.013"N	80°36'58.187"W	3821.64	322.646	5.80	-2.71	-5.13
9968.00	91.390	321.250	6320.51	3904.36	3103.13	-2369.93	1747799.34	14540990.27	40°02'18.660"N	80°36'58.842"W	3904.61	322.630	1.52	0.05	-1.52
10052.00	91.080	320.110	6318.70	3988.31	3168.09	-2423.15	1747746.14	14541055.21	40°02'19.304"N	80°36'59.523"W	3988.54	322.589	1.41	-0.37	-1.36
10136.00	91.020	319.300	6317.16	4072.23	3232.15	-2477.46	1747691.85	14541119.25	40°02'19.940"N	80°37'00.218"W	4072.42	322.530	0.97	-0.07	-0.96
10220.00	91.020	319.500	6315.67	4156.14	3295.92	-2532.12	1747637.21	14541182.99	40°02'20.572"N	80°37'00.917"W	4156.29	322.466	0.24	0.00	0.24
10303.00	91.110	319.640	6314.12	4239.05	3359.09	-2585.94	1747583.42	14541246.13	40°02'21.199"N	80°37'01.605"W	4239.17	322.410	0.20	0.11	0.17
10386.00	91.110	319.390	6312.51	4321.96	3422.20	-2639.81	1747529.56	14541309.23	40°02'21.825"N	80°37'02.294"W	4322.05	322.354	0.30	0.00	-0.30
10470.00	91.110	318.320	6310.89	4405.81	3485.45	-2695.07	1747474.32	14541372.44	40°02'22.452"N	80°37'03.001"W	4405.88	322.288	1.27	0.00	-1.27
10556.00	91.200	321.090	6309.15	4491.72	3551.02	-2750.67	1747418.74	14541437.99	40°02'23.102"N	80°37'03.713"W	4491.77	322.238	3.22	0.10	3.22
10640.00	90.770	322.280	6307.71	4575.70	3616.92	-2802.74	1747366.70	14541503.86	40°02'23.756"N	80°37'04.378"W	4575.75	322.228	1.51	-0.51	1.42
10724.00	90.710	322.830	6306.62	4659.69	3683.60	-2853.81	1747315.65	14541570.52	40°02'24.417"N	80°37'05.031"W	4659.74	322.234	0.66	-0.07	0.65
10809.00	90.650	324.810	6305.62	4744.64	3752.20	-2903.98	1747265.50	14541639.10	40°02'25.097"N	80°37'05.673"W	4744.70	322.262	2.33	-0.07	2.33
10893.00	90.800	325.250	6304.55	4828.51	3821.03	-2952.12	1747217.37	14541707.90	40°02'25.779"N	80°37'06.288"W	4828.59	322.310	0.55	0.18	0.52
10977.00	90.830	319.840	6303.36	4912.47	3887.68	-3003.18	1747166.33	14541774.52	40°02'26.440"N	80°37'06.941"W	4912.55	322.314	6.44	0.04	-6.44
11061.00	90.680	318.200	6302.25	4996.35	3951.09	-3058.26	1747111.28	14541837.91	40°02'27.069"N	80°37'07.645"W	4996.41	322.259	1.96	-0.18	-1.95
11145.00	90.650	318.310	6301.28	5080.16	4013.76	-3114.19	1747055.37	14541900.55	40°02'27.691"N	80°37'08.361"W	5080.20	322.193	0.14	-0.04	0.13
11227.00	90.680	320.840	6300.32	5162.08	4076.17	-3167.35	1747002.23	14541962.94	40°02'28.310"N	80°37'09.041"W	5162.10	322.151	3.09	0.04	3.09
11310.00	90.740	323.220	6299.29	5245.07	4141.59	-3218.41	1746951.19	14542028.34	40°02'28.958"N	80°37'09.694"W	5245.09	322.149	2.87	0.07	2.87
11392.00	90.680	324.670	6298.28	5327.01	4207.88	-3266.67	1746902.95	14542094.60	40°02'29.615"N	80°37'10.311"W	5327.04	322.177	1.77	-0.07	1.77
11476.00	90.710	325.880	6297.26	5410.86	4276.91	-3314.51	1746855.12	14542163.60	40°02'30.300"N	80°37'10.922"W	5410.91	322.225	1.44	0.04	1.44
11558.00	90.710	325.610	6296.24	5492.68	4344.68	-3360.66	1746808.99	14542231.35	40°02'30.971"N	80°37'11.512"W	5492.75	322.278	0.33	0.00	-0.33

Actual Wellpath Report

Brian Dytko OHI 3H AWP Proj: 15147 MD
Page 7 of 10



REFERENCE WELLPATH IDENTIFICATION

Operator	Slot	Slot 3H
SOUTHWESTERN ENERGY	Well	Brian Dytko 3H
Area	Wellbore	Brian Dytko OHI 3H AWB
Field		
Facility		

WELLPATH DATA (194 stations)

MD [ft]	Inclination [°]	Azimuth [°]	TVD [ft]	Vert Sect [ft]	North [ft]	East [ft]	Grid East [US ft]	Grid North [US ft]	Latitude	Longitude	Closure Dist [ft]	Closure Dir [°]	DLS [°/100ft]	Build Rate [°/100ft]	Turn Rate [°/100ft]
11642.00	90.860	321.840	6295.09	5576.62	4412.39	-3410.35	1746759.32	14542299.02	40°02'31.642"N	80°37'12.147"W	5576.70	322.299	4.49	0.18	-4.49
11725.00	90.400	318.880	6294.18	5659.57	4476.29	-3463.29	1746706.40	14542362.90	40°02'32.276"N	80°37'12.824"W	5659.64	322.271	3.61	-0.55	-3.57
11807.00	90.310	316.850	6293.67	5741.35	4537.09	-3518.30	1746651.42	14542423.68	40°02'32.879"N	80°37'13.528"W	5741.40	322.208	2.48	-0.11	-2.48
11890.00	90.460	317.950	6293.11	5824.09	4598.19	-3574.48	1746595.26	14542484.75	40°02'33.485"N	80°37'14.247"W	5824.11	322.140	1.34	0.18	1.33
11974.00	90.490	319.800	6292.42	5907.96	4661.46	-3629.72	1746540.04	14542548.00	40°02'34.113"N	80°37'14.954"W	5907.97	322.093	2.20	0.04	2.20
12057.00	90.030	320.120	6292.04	5990.90	4725.00	-3683.12	1746486.66	14542611.52	40°02'34.743"N	80°37'15.637"W	5990.91	322.064	0.68	-0.55	0.39
12140.00	90.180	320.390	6291.89	6073.86	4788.82	-3736.18	1746433.62	14542675.31	40°02'35.376"N	80°37'16.316"W	6073.87	322.039	0.37	0.18	0.33
12224.00	90.030	321.640	6291.73	6157.85	4854.11	-3789.03	1746380.79	14542740.58	40°02'36.023"N	80°37'16.992"W	6157.85	322.025	1.50	-0.18	1.49
12307.00	90.030	323.230	6291.69	6240.85	4919.90	-3839.63	1746330.21	14542806.34	40°02'36.676"N	80°37'17.639"W	6240.85	322.031	1.92	0.00	1.92
12391.00	89.600	322.800	6291.96	6324.83	4987.00	-3890.16	1746279.70	14542873.41	40°02'37.341"N	80°37'18.285"W	6324.84	322.044	0.72	-0.51	-0.51
12474.00	89.660	322.640	6292.50	6407.82	5053.04	-3940.44	1746229.44	14542939.43	40°02'37.996"N	80°37'18.927"W	6407.83	322.052	0.21	0.07	-0.19
12556.00	89.480	322.130	6293.11	6489.82	5117.99	-3990.48	1746179.42	14543004.36	40°02'38.640"N	80°37'19.567"W	6489.82	322.057	0.66	-0.22	-0.62
12638.00	89.510	322.970	6293.84	6571.81	5183.09	-4040.34	1746129.58	14543069.43	40°02'39.285"N	80°37'20.205"W	6571.82	322.063	1.03	0.04	1.02
12721.00	89.600	322.590	6294.48	6654.80	5249.18	-4090.55	1746079.39	14543135.49	40°02'39.940"N	80°37'20.847"W	6654.81	322.072	0.47	0.11	-0.46
12803.00	89.540	322.940	6295.10	6736.79	5314.46	-4140.16	1746029.80	14543200.75	40°02'40.587"N	80°37'21.481"W	6736.80	322.080	0.43	-0.07	0.43
12885.00	89.510	324.390	6295.78	6818.75	5380.52	-4188.74	1745981.23	14543266.78	40°02'41.242"N	80°37'22.102"W	6818.76	322.099	1.77	-0.04	1.77
12970.00	90.000	322.300	6296.14	6903.72	5448.70	-4239.49	1745930.51	14543334.94	40°02'41.918"N	80°37'22.751"W	6903.74	322.114	2.53	0.58	-2.46
13052.00	90.430	321.770	6295.83	6985.72	5513.35	-4289.93	1745880.09	14543399.56	40°02'42.559"N	80°37'23.396"W	6985.74	322.114	0.83	0.52	-0.65
13134.00	89.170	320.940	6296.12	7067.71	5577.39	-4341.14	1745828.90	14543463.58	40°02'43.194"N	80°37'24.051"W	7067.73	322.105	1.84	-1.54	-1.01
13216.00	89.940	319.880	6296.76	7149.67	5640.58	-4393.39	1745776.66	14543526.74	40°02'43.821"N	80°37'24.720"W	7149.69	322.085	1.60	0.94	-1.29
13298.00	89.940	319.540	6296.84	7231.61	5703.13	-4446.42	1745723.66	14543589.26	40°02'44.441"N	80°37'25.398"W	7231.62	322.058	0.41	0.00	-0.41
13380.00	89.940	319.720	6296.93	7313.54	5765.60	-4499.53	1745670.57	14543651.71	40°02'45.061"N	80°37'26.077"W	7313.54	322.031	0.22	0.00	0.22
13463.00	90.150	320.890	6296.86	7396.50	5829.47	-4552.54	1745617.58	14543715.56	40°02'45.694"N	80°37'26.756"W	7396.51	322.012	1.44	0.25	1.42
13547.00	90.490	318.990	6296.39	7480.44	5893.71	-4606.64	1745563.49	14543779.78	40°02'46.331"N	80°37'27.448"W	7480.44	321.988	2.43	0.40	-2.39
13629.00	90.520	319.890	6295.67	7562.36	5955.96	-4660.02	1745510.14	14543842.00	40°02'46.949"N	80°37'28.131"W	7562.36	321.960	1.22	0.04	1.22
13714.00	90.580	320.090	6294.85	7647.30	6021.06	-4714.66	1745455.52	14543907.08	40°02'47.594"N	80°37'28.830"W	7647.30	321.938	0.25	0.07	0.24
13796.00	90.550	319.010	6294.05	7729.22	6083.46	-4767.86	1745402.34	14543969.45	40°02'48.213"N	80°37'29.510"W	7729.23	321.913	1.32	-0.04	-0.52
13879.00	90.460	321.870	6293.31	7812.18	6147.44	-4820.71	1745349.51	14544033.40	40°02'48.847"N	80°37'30.187"W	7812.19	321.897	3.45	-0.11	3.35
13963.00	90.490	327.190	6292.62	7896.06	6215.82	-4869.44	1745300.80	14544101.76	40°02'49.525"N	80°37'30.809"W	7896.07	321.925	6.33	0.04	6.33
14046.00	90.550	326.110	6291.86	7978.78	6285.15	-4915.06	1745255.19	14544171.06	40°02'50.212"N	80°37'31.392"W	7978.78	321.974	1.30	0.07	-1.30

REFERENCE WELLPATH IDENTIFICATION

Operator	Slot	Slot 3H
SOUTHWESTERN ENERGY	Well	Brian Dytko 3H
Area	Wellbore	Brian Dytko OHI 3H AWB
Field		
Facility		

WELLPATH DATA (194 stations)

MD [ft]	Inclination [°]	Azimuth [°]	TVD [ft]	Vert Sect [ft]	North [ft]	East [ft]	Grid East [US ft]	Grid North [US ft]	Latitude	Longitude	Closure Dist [ft]	Closure Dir [°]	DLS [°/100ft]	Build Rate [°/100ft]	Turn Rate [°/100ft]
14129.00	90.520	320.480	6291.09	8061.72	6351.66	-4964.65	1745205.63	14544237.55	40°02'50.872"N	80°37'32.026"W	8061.72	321.988	6.78	-0.04	-6.78
14212.00	90.550	319.510	6290.31	8144.67	6415.24	-5018.00	1745152.29	14544301.10	40°02'51.502"N	80°37'32.709"W	8144.67	321.967	1.17	0.04	-1.17
14295.00	90.620	318.700	6289.47	8227.56	6477.97	-5072.34	1745097.98	14544363.81	40°02'52.124"N	80°37'33.404"W	8227.56	321.939	0.98	0.08	-0.98
14377.00	90.580	318.880	6288.61	8309.43	6539.66	-5126.36	1745043.98	14544425.47	40°02'52.736"N	80°37'34.096"W	8309.44	321.908	0.22	-0.05	0.22
14460.00	90.060	319.660	6288.14	8392.33	6602.56	-5180.51	1744989.85	14544488.34	40°02'53.360"N	80°37'34.789"W	8392.35	321.881	1.13	-0.63	0.94
14545.00	90.120	320.920	6288.01	8477.29	6667.94	-5234.82	1744935.56	14544553.70	40°02'54.008"N	80°37'35.483"W	8477.31	321.866	1.48	0.07	1.48
14629.00	90.150	322.170	6287.81	8561.29	6733.72	-5287.06	1744883.34	14544619.46	40°02'54.661"N	80°37'36.151"W	8561.31	321.862	1.49	0.04	1.49
14712.00	89.970	323.600	6287.72	8644.28	6799.91	-5337.14	1744833.28	14544685.62	40°02'55.317"N	80°37'36.792"W	8644.29	321.872	1.74	-0.22	1.72
14792.00	89.910	323.630	6287.81	8724.25	6864.31	-5384.60	1744785.84	14544750.00	40°02'55.955"N	80°37'37.399"W	8724.26	321.888	0.08	-0.07	0.04
14877.00	90.150	323.070	6287.76	8809.22	6932.51	-5435.34	1744735.12	14544818.16	40°02'56.631"N	80°37'38.047"W	8809.23	321.902	0.72	0.28	-0.66
14961.00	90.060	322.410	6287.61	8893.21	6999.36	-5486.19	1744684.29	14544884.99	40°02'57.294"N	80°37'38.698"W	8893.22	321.910	0.79	-0.11	-0.79
15043.00	90.000	323.070	6287.57	8975.20	7064.62	-5535.84	1744634.66	14544950.23	40°02'57.941"N	80°37'39.333"W	8975.21	321.918	0.81	-0.07	0.80
15122.00	90.150	324.220	6287.46	9054.17	7128.25	-5582.67	1744587.85	14545013.83	40°02'58.572"N	80°37'39.931"W	9054.17	321.933	1.47	0.19	1.46
15147.00	90.150	324.220	6287.40	9079.15	7148.53	-5597.28	1744573.24	14545034.10	40°02'58.773"N	80°37'40.118"W	9079.15	321.939	0.00	0.00	0.00

HOLE & CASING SECTIONS - Ref Wellbore: Brian Dytko OHI 3H AWB Ref Wellpath: Brian Dytko OHI 3H AWP Proj: 15147'MD

String/Diameter	Start MD [ft]	End MD [ft]	Interval [ft]	Start TVD [ft]	End TVD [ft]	Start N/S [ft]	Start E/W [ft]	End N/S [ft]	End E/W [ft]
20in Conductor	26.00	100.00	74.00	26.00	100.00	0.00	0.00	0.29	0.02
17.5in Open Hole	126.00	655.00	529.00	126.00	654.99	0.42	0.04	2.87	-0.19
13.375in Casing	26.00	655.00	629.00	26.00	654.99	0.00	0.00	2.87	-0.19
12.25in Open Hole	655.00	1972.00	1317.00	654.99	1970.00	2.87	-0.19	55.45	-38.00
9.625in Casing	26.00	1972.00	1946.00	26.00	1970.00	0.00	0.00	55.45	-38.00
8.75in Open Hole	1972.00	5665.00	3693.00	1970.00	5661.39	55.45	-38.00	35.88	-9.12
8.5in Open Hole	5665.00	15120.39	9455.39	5661.39	6287.47	35.88	-9.12	7126.94	-5582.22

RECEIVED
Oil and Gas
Mar 10 2019
WV Department of
Environmental Protection

05/31/2019

REFERENCE WELLPATH IDENTIFICATION

Operator	SOUTHWESTERN ENERGY	Slot	Slot 3H
Area	Ohio County, WV	Well	Brian Dytko 3H
Field	Ohio	Wellbore	Brian Dytko OHI 3H AWB
Facility	Brian Dytko OHI Pad		

TARGETS

Name	TVD [ft]	North [ft]	East [ft]	Grid East [US ft]	Grid North [US ft]	Latitude	Longitude	Shape
Brian Dytko OHI 3H BHL Rev-5	6296.00	7152.24	-5592.28	1744578.24	14545037.81	40°02'58.809"N	80°37'40.054"W	point
Brian Dytko OHI 3H LP Rev-5	6360.00	537.30	-370.52	1749797.97	14538425.44	40°01'53.218"N	80°36'33.281"W	point

WELLPATH COMPOSITION - Ref Wellbore: Brian Dytko OHI 3H AWB Ref Wellpath: Brian Dytko OHI 3H AWP Proj: 15147'MD

Start MD [ft]	End MD [ft]	Positional Uncertainty Model	Log Name/Comment	Wellbore
26.00	600.00	BHI Generic gyro - northseeking (Standard)	01_MS_NS Gyro <17.5">(50'-600')	Brian Dytko OHI 3H AWB
600.00	783.00	BHI Generic gyro - northseeking (Standard)	02_MS_NS Gyro <12.25">(783')	Brian Dytko OHI 3H AWB
783.00	861.00	BHI NaviTrak (Axial)	03_APS_EM <12.25">(861')	Brian Dytko OHI 3H AWB
861.00	909.00	BHI Generic gyro - northseeking (Standard)	05_MS_NS Gyro <12.25">(909')	Brian Dytko OHI 3H AWB
909.00	1919.00	BHI NaviTrak (Axial)	04_APS_EM <12.25">(909')(1030'-1919')	Brian Dytko OHI 3H AWB
1919.00	5657.00	BHI NaviTrak (Axial)	06_APS_EM <8.75">(1919')(1996'-5657')	Brian Dytko OHI 3H AWB
5657.00	15122.00	BHI AutoTrak Curve (Short)	07_BH_AT Curve <8.5">(5657')(5704'-15122')	Brian Dytko OHI 3H AWB
15122.00	15147.00	Blind Drilling (std)	Projection to bit	Brian Dytko OHI 3H AWB

05/31/2019

RECEIVED
Office of Oil and Gas
MAY 10 2019
WV Department of
Environmental Protection

REFERENCE WELLPATH IDENTIFICATION

Operator	SOUTHWESTERN ENERGY	Slot	Slot 3H
Area	Ohio County, WV	Well	Brian Dytko 3H
Field	Ohio	Wellbore	Brian Dytko OHI 3H AWB
Facility	Brian Dytko OHI Pad		

COMMENTS

Wellpath general comments
API: 47-069-00264-0000
Rig: SDC 42
BH Job#: 9145106
Duration: 05/03/2018 - 05/14/2018