

SOUTHWESTERN ENERGY

Location: Ohio County, WV
 Field: Ohio
 Facility: OCC.A.OHI.PAD
 Slot: Slot 205H
 Well: OCC.A.OHI.205H
 Wellbore: OCC.A.OHI.205H.PWB

Grid System: NAD83 / UTM Zone 17 North, US feet
* - Wellbore was transformed from a different geographic datum
North Reference: Grid north
Scale: True distance
Depths are in feet
Created by: bromize on 2016-05-21
Database: WA_Pennsylvania

True vertical depths are referenced to SDC 41 (RRB)
 Measured depths are referenced to SDC 41 (RRB)
 SDC 41 (RRB) to Mean Sea Level: 1121.5 feet
 Mean Sea Level to Ground level (At Slot: Slot 205H): -1008.5 feet
 Coordinates are in feet referenced to Slot

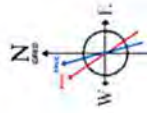
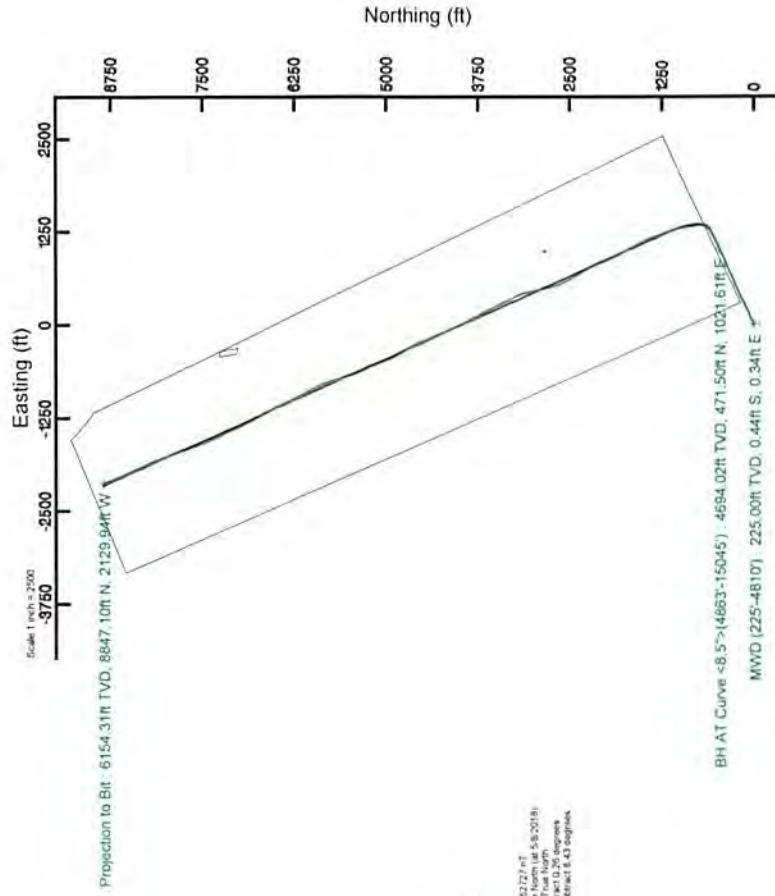


Location Information

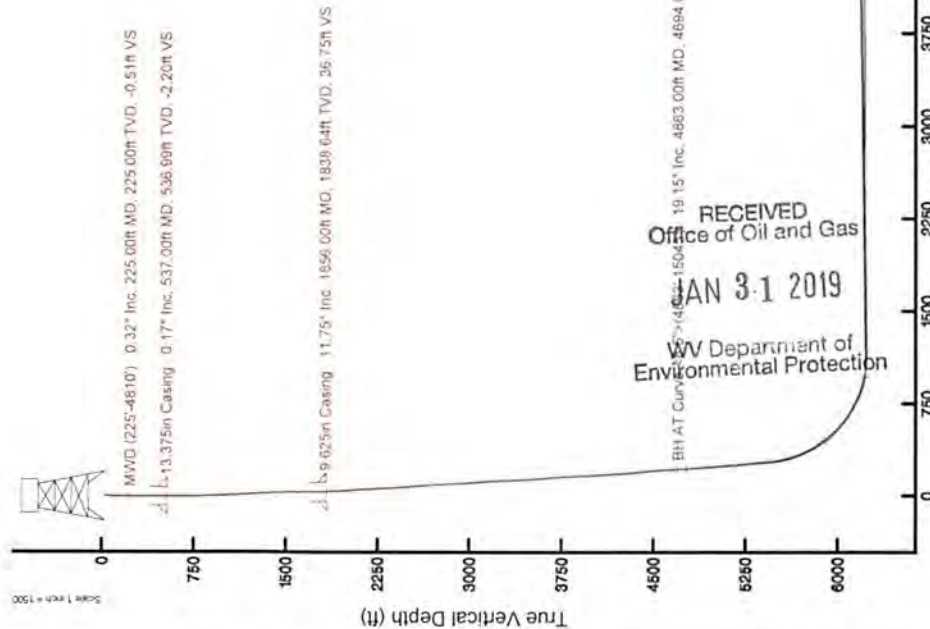
Facility Name	Grid East (US ft)	Grid North (US ft)	Latitude	Longitude
OCC.A.OHI.PAD	1752836.900	1455922.760	40°04'46.0627"N	80°35'53.184°W
Local N (ft)	Local E (ft)	Grid North (US ft)	Latitude	Longitude
-13.08	19.66	1455909.690	40°04'45.9327"N	80°35'52.931°W
Slot 205H			26R	
SDC 41 (RRB) to Ground level (At Slot: Slot 205H)			-1095.5ft	
Mean Sea Level to Mean Sea Level			1121.5ft	

Comments

API: 47-089-00241-0000
 RIG: SDC 41
 BH Job #: 9160206
 Duration: 05/09/2018 - 05/12/2018



User specified Dip: 67.42° - 446.2327 ft
 Magnetic Grid North is 0.26 degrees East of True North
 To correct azimuth from True to Grid subtract 0.26 degrees
 To correct azimuth from Magnetic to Grid subtract 6.43 degrees



RECEIVED
 Office of Oil and Gas
 JAN 31 2019
 WV Department of
 Environmental Protection

Vertical Section (ft)
 Azimuth 346.31° with reference 0.00 N, 0.00 E
 Scale 1 inch = 1500

REFERENCE WELLPATH IDENTIFICATION

Operator	SOUTHWESTERN ENERGY	Slot	Slot 205H
Area	Ohio County, WV	Well	OCC A OHI 205H
Field	Ohio	Wellbore	OCC A OHI 205H AWB
Facility	OCC A OHI Pad		

REPORT SETUP INFORMATION

Projection System	NAD83 / UTM Zone 17 North, US feet	Software System	WellArchitect® 5.0
North Reference	Grid	User	Thomsuzc
Scale	0.999614	Report Generated	5/21/2018 at 9:12:45 AM
Convergence at slot	0.26° East	Database/Source file	WA_Pennsylvania/OCC_A_OHI_205H_AWP_Proj_15070_MD.xml

WELLPATH LOCATION

	Local coordinates		Grid coordinates		Geographic coordinates	
	North[ft]	East[ft]	Easting[US ft]	Northing[US ft]	Latitude	Longitude
Slot Location	-13.08	19.66	1752856.55	14555909.69	40°04'45.932"N	80°35'52.931"W
Facility Reference Pt			1752836.90	14555922.76	40°04'46.062"N	80°35'53.184"W
Field Reference Pt			0.00	0.00	0°00'00.000"	85°29'19.478"W

WELLPATH DATUM

Calculation method	Minimum curvature	SDC 41 (RKB) to Facility Vertical Datum	1121.50ft
Horizontal Reference Pt	Slot	SDC 41 (RKB) to Mean Sea Level	1121.50ft
Vertical Reference Pt	SDC 41 (RKB)	SDC 41 (RKB) to Ground Level at Slot (Slot 205H)	26.00ft
MD Reference Pt	SDC 41 (RKB)	Section Origin	N 0.00, E 0.00 ft
Field Vertical Reference	Mean Sea Level	Section Azimuth	346.31°

RECEIVED
Office of Oil and Gas
JAN 31 2019
WV Department of
Environmental Protection

05/03/2019

REFERENCE WELLPATH IDENTIFICATION

Operator	SOUTHWESTERN ENERGY	Slot	Slot 205H
Area	Ohio County, WV	Well	OCC A OHI 205H
Field	Ohio	Wellbore	OCC A OHI 205H AWB
Facility	OCC A OHI Pad		

WELLPATH DATA (166 stations) † = interpolated/extrapolated station

MD [ft]	Inclination [°]	Azimuth [°]	TVD [ft]	Vert Sect [ft]	North [ft]	East [ft]	Grid East [US ft]	Grid North [US ft]	Latitude	Longitude	Closure Dist [ft]	Closure Dir [°]	DLS ["/100ft]	Build Rate ["/100ft]	Turn Rate ["/100ft]
0.00†	0.000	142.620	0.00	0.00	0.00	0.00	1752856.55	14555909.69	40°04'45.932"N	80°35'52.931"W	0.00	0.000	0.00	0.00	0.00
26.00	0.000	142.620	26.00	0.00	0.00	0.00	1752856.55	14555909.69	40°04'45.932"N	80°35'52.931"W	0.00	0.000	0.00	0.00	0.00
225.00	0.320	142.620	225.00	-0.51	-0.44	0.34	1752856.89	14555909.25	40°04'45.928"N	80°35'52.927"W	0.56	142.620	0.16	0.16	71.67
315.00	0.340	152.060	315.00	-1.00	-0.88	0.62	1752857.16	14555908.81	40°04'45.923"N	80°35'52.924"W	1.07	144.963	0.06	0.02	10.49
412.00	0.340	149.690	412.00	-1.55	-1.38	0.90	1752857.44	14555908.31	40°04'45.918"N	80°35'52.920"W	1.64	147.028	0.01	0.00	-2.44
478.00	0.350	157.060	477.99	-1.94	-1.73	1.07	1752857.62	14555907.96	40°04'45.915"N	80°35'52.918"W	2.04	148.270	0.07	0.02	11.17
561.00	0.120	200.890	560.99	-2.26	-2.05	1.14	1752857.69	14555907.64	40°04'45.912"N	80°35'52.917"W	2.35	150.905	0.33	-0.28	52.81
621.00	0.110	104.270	620.99	-2.34	-2.12	1.17	1752857.72	14555907.57	40°04'45.911"N	80°35'52.916"W	2.43	151.053	0.29	-0.02	-161.03
718.00	1.720	61.650	717.98	-2.01	-1.45	2.55	1752859.09	14555908.24	40°04'45.918"N	80°35'52.899"W	2.93	119.734	1.69	1.66	-43.94
814.00	3.940	59.290	813.86	-0.68	0.91	6.65	1752863.20	14555910.60	40°04'45.941"N	80°35'52.846"W	6.71	82.165	2.32	2.31	-2.46
910.00	6.290	61.350	909.47	1.64	5.12	14.10	1752870.65	14555914.81	40°04'45.982"N	80°35'52.750"W	15.00	70.040	2.45	2.45	2.15
1006.00	8.620	62.920	1004.65	4.66	10.92	25.12	1752881.66	14555920.60	40°04'46.039"N	80°35'52.608"W	27.39	66.510	2.44	2.43	1.64
1103.00	10.230	61.650	1100.34	8.53	18.32	39.18	1752895.71	14555928.00	40°04'46.111"N	80°35'52.426"W	43.25	64.940	1.67	1.66	-1.31
1199.00	11.860	57.950	1194.56	13.79	27.60	55.04	1752911.57	14555937.28	40°04'46.202"N	80°35'52.222"W	61.58	63.367	1.85	1.70	-3.85
1295.00	12.800	59.410	1288.34	19.99	38.25	72.56	1752929.08	14555947.92	40°04'46.307"N	80°35'51.996"W	82.02	62.204	1.03	0.98	1.52
1391.00	12.350	60.610	1382.04	25.86	48.70	90.66	1752947.17	14555958.37	40°04'46.409"N	80°35'51.762"W	102.91	61.756	0.54	-0.47	1.25
1487.00	11.410	68.570	1475.99	29.92	57.21	108.44	1752964.95	14555966.88	40°04'46.493"N	80°35'51.533"W	122.61	62.187	1.97	-0.98	8.29
1583.00	10.550	73.570	1570.23	31.62	63.16	125.71	1752982.21	14555972.83	40°04'46.551"N	80°35'51.311"W	140.69	63.323	1.34	-0.90	5.21
1679.00	9.730	72.090	1664.73	32.63	68.14	141.86	1752998.36	14555977.81	40°04'46.599"N	80°35'51.102"W	157.38	64.343	0.90	-0.85	-1.54
1775.00	10.680	69.060	1759.21	34.35	73.82	157.89	1753014.38	14555983.48	40°04'46.655"N	80°35'50.896"W	174.29	64.943	1.14	0.99	-3.16
1796.00	11.150	68.400	1779.83	34.88	75.26	161.60	1753018.08	14555984.92	40°04'46.669"N	80°35'50.846"W	178.26	65.027	2.32	2.24	-3.14
1888.00	12.070	65.160	1869.95	37.96	82.58	178.60	1753035.08	14555992.23	40°04'46.740"N	80°35'50.629"W	196.76	65.186	1.23	1.00	-3.52
1945.00	12.570	62.840	1925.64	40.56	87.91	189.52	1753046.00	14555997.57	40°04'46.792"N	80°35'50.488"W	208.92	65.116	1.23	0.88	-4.07
2036.00	13.360	59.030	2014.32	45.99	97.84	207.35	1753063.82	14556007.49	40°04'46.890"N	80°35'50.258"W	229.27	64.739	1.28	0.87	-4.19
2127.00	14.830	61.190	2102.58	52.15	108.86	226.57	1753083.03	14556018.51	40°04'46.998"N	80°35'50.010"W	251.37	64.336	1.72	1.62	2.37
2218.00	16.170	66.860	2190.27	57.27	119.46	248.43	1753104.88	14556029.10	40°04'47.102"N	80°35'49.729"W	275.66	64.319	2.22	1.47	6.23
2313.00	15.680	67.950	2281.62	61.31	129.48	272.49	1753128.93	14556039.12	40°04'47.199"N	80°35'49.418"W	301.69	64.585	0.60	-0.52	1.15
2409.00	16.650	64.610	2373.83	65.98	140.24	296.94	1753153.37	14556049.88	40°04'47.305"N	80°35'49.103"W	328.39	64.719	1.40	1.01	-3.88
2504.00	16.790	63.580	2464.81	71.77	152.18	321.52	1753177.95	14556061.82	40°04'47.422"N	80°35'48.786"W	355.72	64.671	0.34	0.15	-0.58
2601.00	17.760	60.520	2557.44	78.88	165.70	346.95	1753203.36	14556075.32	40°04'47.554"N	80°35'48.458"W	384.49	64.471	1.37	1.00	-3.55

RECEIVED
Office of Oil and Gas
JAN 31 2019
Department of Environmental Protection

REFERENCE WELLPATH IDENTIFICATION

Operator	SOUTHWESTERN ENERGY	Slot	Slot 205H
Area	Ohio County, WV	Well	OCC A OHI 205H
Field	Ohio	Wellbore	OCC A OHI 205H AWB
Facility	OCC A OHI Pad		

WELLPATH DATA (166 stations)

MD [ft]	Inclination [°]	Azimuth [°]	TVD [ft]	Vert Sect [ft]	North [ft]	East [ft]	Grid East [US ft]	Grid North [US ft]	Latitude	Longitude	Closure Dist [ft]	Closure Dir [°]	DLS [°/100ft]	Build Rate [°/100ft]	Turn Rate [°/100ft]
2697.00	18.700	62.300	2648.62	86.59	180.06	373.32	1753229.73	14556089.68	40°04'47.695"N	80°35'48.118"W	414.48	64.251	1.14	0.98	1.85
2793.00	18.090	65.930	2739.72	93.00	193.29	400.56	1753256.95	14556102.91	40°04'47.824"N	80°35'47.767"W	444.76	64.240	1.35	-0.64	3.78
2890.00	17.430	68.790	2832.10	97.62	204.69	427.85	1753284.24	14556114.30	40°04'47.936"N	80°35'47.415"W	474.29	64.433	1.13	-0.68	2.95
2986.00	18.360	66.930	2923.45	101.96	215.82	455.17	1753311.54	14556125.42	40°04'48.045"N	80°35'47.063"W	503.74	64.632	1.14	0.97	-1.94
3082.00	19.860	63.440	3014.16	108.06	229.03	483.67	1753340.03	14556138.63	40°04'48.174"N	80°35'46.696"W	535.15	64.661	1.14	1.56	-3.64
3178.00	19.330	63.420	3104.60	115.24	243.43	512.46	1753368.81	14556153.03	40°04'48.315"N	80°35'46.325"W	567.34	64.591	0.55	-0.55	-0.02
3274.00	17.870	66.030	3195.59	121.41	256.53	540.13	1753396.47	14556166.12	40°04'48.443"N	80°35'45.968"W	597.95	64.595	1.75	-1.52	2.72
3370.00	17.910	70.930	3286.95	125.42	267.34	567.54	1753423.87	14556176.92	40°04'48.549"N	80°35'45.615"W	627.35	64.778	1.57	0.04	5.10
3466.00	18.430	69.480	3378.16	128.61	277.48	595.71	1753452.02	14556187.06	40°04'48.648"N	80°35'45.252"W	657.16	65.024	0.72	0.54	-1.51
3562.00	18.790	66.710	3469.14	132.99	288.91	624.12	1753480.43	14556198.49	40°04'48.759"N	80°35'44.886"W	687.75	65.160	0.99	0.37	-2.89
3657.00	19.130	63.220	3558.99	139.07	301.97	652.07	1753508.37	14556211.55	40°04'48.887"N	80°35'44.525"W	718.60	65.151	1.25	0.36	-3.67
3752.00	19.800	60.730	3648.56	146.92	316.85	680.00	1753536.29	14556226.42	40°04'49.033"N	80°35'44.165"W	750.20	65.016	1.12	0.71	-2.62
3848.00	18.600	63.710	3739.23	154.62	331.59	707.92	1753564.19	14556241.15	40°04'49.177"N	80°35'43.805"W	781.72	64.902	1.61	-1.25	3.10
3945.00	17.910	69.930	3831.35	159.66	343.56	735.80	1753592.06	14556253.11	40°04'49.294"N	80°35'43.446"W	812.05	64.971	2.13	-0.71	6.41
4041.00	18.520	68.990	3922.54	163.24	354.09	763.89	1753620.15	14556263.64	40°04'49.397"N	80°35'43.084"W	841.97	65.131	0.71	0.64	-0.98
4137.00	18.850	66.550	4013.48	167.81	365.73	792.36	1753648.60	14556275.28	40°04'49.511"N	80°35'42.717"W	872.69	65.223	0.88	0.34	-2.54
4234.00	19.400	68.170	4105.13	172.75	377.95	821.69	1753677.92	14556287.50	40°04'49.630"N	80°35'42.339"W	904.44	65.299	0.79	0.57	1.67
4330.00	20.760	67.760	4195.29	177.54	390.32	852.24	1753708.46	14556299.86	40°04'49.751"N	80°35'41.945"W	937.37	65.392	1.42	1.42	-0.43
4426.00	21.220	64.450	4284.92	183.64	404.26	883.66	1753739.87	14556313.79	40°04'49.887"N	80°35'41.540"W	971.74	65.417	1.32	0.48	-3.45
4521.00	21.250	61.290	4373.48	191.63	419.94	914.27	1753770.47	14556329.47	40°04'50.041"N	80°35'41.145"W	1006.10	65.330	1.21	0.03	-3.33
4617.00	21.250	62.820	4462.95	200.20	436.25	945.01	1753801.19	14556345.77	40°04'50.201"N	80°35'40.749"W	1040.84	65.220	0.58	0.00	1.59
4714.00	20.260	64.300	4553.65	207.79	451.56	975.78	1753831.95	14556361.07	40°04'50.351"N	80°35'40.352"W	1075.20	65.167	1.15	-1.02	1.53
4810.00	19.350	67.520	4643.98	213.68	464.85	1005.45	1753861.61	14556374.36	40°04'50.481"N	80°35'39.970"W	1107.71	65.188	1.48	-0.95	3.35
4863.00	19.150	67.760	4694.02	216.32	471.50	1021.61	1753877.77	14556381.00	40°04'50.546"N	80°35'39.761"W	1125.17	65.226	0.41	-0.38	0.45
4890.00	19.140	66.530	4719.52	217.73	474.94	1029.77	1753885.92	14556384.44	40°04'50.579"N	80°35'39.656"W	1134.02	65.241	1.49	-0.04	-4.56
4986.00	19.770	65.810	4810.04	223.36	487.86	1059.07	1753895.16	14556397.36	40°04'50.706"N	80°35'39.279"W	1165.99	65.266	0.70	0.66	-0.75
5082.00	19.910	64.270	4900.34	229.73	501.61	1088.55	1753944.68	14556411.10	40°04'50.840"N	80°35'38.898"W	1198.56	65.260	0.56	0.15	-1.60
5179.00	19.930	64.740	4991.54	236.49	515.83	1118.38	1753974.50	14556425.32	40°04'50.979"N	80°35'38.514"W	1231.61	65.239	0.17	0.02	0.38
5275.00	20.290	63.580	5081.69	243.44	530.22	1148.09	1754004.19	14556439.70	40°04'51.120"N	80°35'38.131"W	1264.61	65.211	0.56	0.38	-1.21
5372.00	19.850	61.260	5172.80	251.42	545.62	1177.59	1754033.68	14556455.10	40°04'51.271"N	80°35'37.750"W	1297.85	65.140	0.94	-0.45	-2.93



Actual Wellpath Report

OCC A OHI 205H AWP Proj: 15070'MD
Page 3 of 9



REFERENCE WELLPATH IDENTIFICATION			
Operator	SOUTHWESTERN ENERGY	Slot	Slot 205H
Area	Ohio County, WV	Well	OCC A OHI 205H
Field	Ohio	Wellbore	OCC A OHI 205H AWB
Facility	OCC A OHI Pad		

WELLPATH DATA (166 stations)															
MD [ft]	Inclination [°]	Azimuth [°]	TVD [ft]	Vert Sect [ft]	North [ft]	East [ft]	Grid East [US ft]	Grid North [US ft]	Latitude	Longitude	Closure Dist [ft]	Closure Dir [°]	DLS [°/100ft]	Build Rate [°/100ft]	Turn Rate [°/100ft]
2697.00	18.700	62.300	2648.62	86.59	180.06	373.32	1753229.73	14556089.68	40°04'47.695"N	80°35'48.118"W	414.48	64.251	1.14	0.98	1.85
2793.00	18.090	65.930	2739.72	93.00	193.29	400.56	1753256.95	14556102.91	40°04'47.824"N	80°35'47.767"W	444.76	64.240	1.35	-0.64	3.78
2890.00	17.430	68.790	2832.10	97.62	204.69	427.85	1753284.24	14556114.30	40°04'47.936"N	80°35'47.415"W	474.29	64.433	1.13	-0.68	2.95
2986.00	18.360	66.930	2923.45	101.96	215.82	455.17	1753311.54	14556125.42	40°04'48.045"N	80°35'47.063"W	503.74	64.632	1.14	0.97	-1.94
3082.00	19.860	63.440	3014.16	108.06	229.03	483.67	1753340.03	14556138.63	40°04'48.174"N	80°35'46.696"W	535.15	64.681	1.96	1.56	-3.64
3178.00	19.330	63.420	3104.60	115.24	243.43	512.46	1753368.81	14556153.03	40°04'48.315"N	80°35'46.325"W	567.34	64.591	0.55	-0.55	-0.02
3274.00	17.870	66.030	3195.59	121.41	256.53	540.13	1753396.47	14556166.12	40°04'48.443"N	80°35'45.968"W	597.95	64.595	1.75	-1.52	2.72
3370.00	17.910	70.930	3286.95	125.42	267.34	567.54	1753423.87	14556176.92	40°04'48.549"N	80°35'45.615"W	627.35	64.778	1.57	0.04	5.10
3466.00	18.430	69.480	3378.16	128.61	277.48	595.71	1753452.02	14556187.06	40°04'48.648"N	80°35'45.252"W	657.16	65.024	0.72	0.54	-1.51
3562.00	18.790	66.710	3469.14	132.99	288.91	624.12	1753480.43	14556198.49	40°04'48.759"N	80°35'44.886"W	687.75	65.160	0.99	0.37	-2.89
3657.00	19.130	63.220	3558.99	139.07	301.97	652.07	1753508.37	14556211.55	40°04'48.887"N	80°35'44.525"W	718.60	65.151	1.25	0.36	-3.67
3752.00	19.800	60.730	3648.56	146.92	316.85	680.00	1753536.29	14556226.42	40°04'49.033"N	80°35'44.165"W	750.20	65.016	1.12	0.71	-2.62
3848.00	18.600	63.710	3739.23	154.62	331.59	707.92	1753564.19	14556241.15	40°04'49.177"N	80°35'43.805"W	781.72	64.902	1.61	-1.25	3.10
3945.00	17.910	69.930	3831.35	159.66	343.56	735.80	1753592.06	14556253.11	40°04'49.294"N	80°35'43.446"W	812.05	64.971	2.13	-0.71	6.41
4041.00	18.520	68.990	3922.54	163.24	354.09	763.89	1753620.15	14556263.64	40°04'49.397"N	80°35'43.084"W	841.97	65.131	0.71	0.64	-0.98
4137.00	18.850	66.550	4013.48	167.81	365.73	792.36	1753648.60	14556275.28	40°04'49.511"N	80°35'42.717"W	872.69	65.223	0.88	0.34	-2.54
4234.00	19.400	68.170	4105.13	172.75	377.95	821.69	1753677.92	14556287.50	40°04'49.630"N	80°35'42.339"W	904.44	65.299	0.79	0.57	1.67
4330.00	20.760	67.760	4195.29	177.54	390.32	852.24	1753708.46	14556299.86	40°04'49.751"N	80°35'41.945"W	937.37	65.392	1.42	1.42	-0.43
4426.00	21.220	64.450	4284.92	183.64	404.26	883.66	1753739.87	14556313.79	40°04'49.887"N	80°35'41.540"W	971.74	65.417	1.32	0.48	-3.45
4521.00	21.250	61.290	4373.48	191.63	419.94	914.27	1753770.47	14556329.47	40°04'50.041"N	80°35'41.145"W	1006.10	65.330	1.21	0.03	-3.33
4617.00	21.250	62.820	4462.95	200.20	436.25	945.01	1753801.19	14556345.77	40°04'50.201"N	80°35'40.749"W	1040.84	65.220	0.58	0.00	1.59
4714.00	20.260	64.300	4553.65	207.79	451.56	975.78	1753831.95	14556361.07	40°04'50.351"N	80°35'40.352"W	1075.20	65.167	1.15	-1.02	1.53
4810.00	19.350	67.520	4643.98	213.68	464.85	1005.45	1753861.61	14556374.36	40°04'50.481"N	80°35'39.970"W	1107.71	65.188	1.48	-0.95	3.35
4863.00	19.150	67.760	4694.02	216.32	471.50	1021.61	1753877.77	14556381.00	40°04'50.546"N	80°35'39.761"W	1125.17	65.226	0.41	-0.38	0.45
4890.00	19.140	66.530	4719.52	217.73	474.94	1029.77	1753885.92	14556384.44	40°04'50.579"N	80°35'39.656"W	1134.02	65.241	1.49	-0.04	-4.56
4986.00	19.770	65.810	4810.04	223.36	487.86	1059.02	1753915.16	14556397.36	40°04'50.706"N	80°35'39.279"W	1165.99	65.266	0.70	0.66	-0.75
5082.00	19.910	64.270	4900.34	229.73	501.61	1088.55	1753944.68	14556411.10	40°04'50.840"N	80°35'38.898"W	1198.56	65.260	0.56	0.15	-1.60
5179.00	19.930	64.740	4991.54	236.49	515.83	1118.38	1753974.50	14556425.32	40°04'50.979"N	80°35'38.514"W	1231.61	65.239	0.17	0.02	0.48
5275.00	20.290	63.580	5081.69	243.44	530.22	1148.09	1754004.19	14556439.70	40°04'51.120"N	80°35'38.131"W	1264.61	65.211	0.56	0.38	-1.21
5372.00	19.850	61.260	5172.80	251.42	545.62	1177.59	1754033.68	14556455.10	40°04'51.271"N	80°35'37.750"W	1297.85	65.140	0.94	-0.45	-2.39



Actual Wellpath Report

OCC A OHI 205H AWP Proj: 15070'MD
Page 4 of 9



REFERENCE WELLPATH IDENTIFICATION

Operator	SOUTHWESTERN ENERGY	Slot	Slot 205H
Area	Ohio County, WV	Well	OCC A OHI 205H
Field	Ohio	Wellbore	OCC A OHI 205H AWP
Facility	OCC A OHI Pad		

WELLPATH DATA (166 stations)

MD [ft]	Inclination [°]	Azimuth [°]	TVD [ft]	Vert Sect [ft]	North [ft]	East [ft]	Grid East [US ft]	Grid North [US ft]	Latitude	Longitude	Closure Dist [ft]	Closure Dir [°]	DLS [°/100ft]	Build Rate [°/100ft]	Turn Rate [°/100ft]
5467.00	18.390	59.310	5262.56	259.99	561.03	1204.62	1754060.70	14556470.50	40°04'51.422"N	80°35'37.402"W	1328.86	65.027	1.68	-1.54	-2.05
5563.00	16.480	57.710	5354.14	268.76	576.03	1229.16	1754085.23	14556485.50	40°04'51.569"N	80°35'37.085"W	1357.44	64.890	2.05	-1.99	-1.67
5659.00	20.390	58.090	5445.20	278.34	592.15	1254.87	1754110.94	14556501.61	40°04'51.728"N	80°35'36.753"W	1387.57	64.738	4.07	4.07	0.40
5756.00	22.080	45.640	5535.65	292.93	613.84	1282.27	1754138.32	14556523.29	40°04'51.941"N	80°35'36.400"W	1421.62	64.419	4.95	1.74	-12.84
5851.00	22.940	31.750	5623.48	315.05	642.09	1304.79	1754160.84	14556551.53	40°04'52.219"N	80°35'36.108"W	1454.22	63.798	5.66	0.91	-14.62
5946.00	26.250	17.840	5709.92	345.98	677.87	1320.99	1754177.03	14556587.30	40°04'52.572"N	80°35'35.898"W	1484.76	62.835	7.00	3.48	-14.64
6042.00	31.290	1.770	5794.17	388.19	723.10	1328.28	1754184.31	14556632.51	40°04'53.018"N	80°35'35.801"W	1512.35	61.437	9.58	5.25	-16.74
6138.00	36.050	354.010	5874.08	440.27	776.16	1326.10	1754182.14	14556685.55	40°04'53.543"N	80°35'35.826"W	1536.54	59.660	6.68	4.96	-8.08
6234.00	41.430	352.240	5948.93	499.90	835.77	1318.86	1754174.90	14556745.14	40°04'54.132"N	80°35'35.916"W	1561.38	57.637	5.72	5.60	-1.84
6330.00	48.600	350.960	6016.75	567.47	902.89	1308.90	1754164.94	14556812.23	40°04'54.796"N	80°35'36.040"W	1590.10	55.402	7.53	7.47	-1.33
6426.00	54.220	348.530	6076.62	642.33	976.68	1295.49	1754151.53	14556885.99	40°04'55.526"N	80°35'36.208"W	1622.40	52.987	6.18	5.85	-2.53
6521.00	60.080	345.080	6128.14	722.08	1054.31	1277.20	1754133.26	14556963.59	40°04'56.294"N	80°35'36.439"W	1656.14	50.461	6.88	6.17	-3.63
6568.00	63.310	342.610	6150.42	763.41	1094.04	1265.68	1754121.74	14557003.31	40°04'56.687"N	80°35'36.585"W	1672.98	49.160	8.28	6.87	-5.26
6617.00	67.840	341.660	6170.68	807.90	1136.49	1251.99	1754108.05	14557045.74	40°04'57.107"N	80°35'36.759"W	1690.89	47.768	9.41	9.24	-1.94
6664.00	69.380	340.380	6187.82	851.47	1177.87	1237.76	1754093.83	14557087.11	40°04'57.516"N	80°35'36.939"W	1708.63	46.420	4.14	3.28	-2.72
6713.00	72.680	339.960	6203.75	897.54	1221.46	1222.04	1754078.11	14557130.67	40°04'57.948"N	80°35'37.139"W	1727.81	45.014	6.78	6.73	-0.86
6760.00	75.940	339.650	6216.46	942.49	1263.92	1206.42	1754062.50	14557173.12	40°04'58.368"N	80°35'37.337"W	1747.26	43.667	6.97	6.94	-0.66
6809.00	79.420	339.790	6226.91	990.04	1308.81	1189.83	1754045.92	14557218.00	40°04'58.813"N	80°35'37.548"W	1768.81	42.274	7.11	7.10	0.29
6854.00	83.000	340.200	6233.78	1034.23	1350.60	1174.62	1754030.71	14557259.76	40°04'59.226"N	80°35'37.741"W	1789.93	41.014	8.01	7.96	0.91
6905.00	86.060	338.890	6238.65	1084.64	1398.16	1156.88	1754012.98	14557307.30	40°04'59.697"N	80°35'37.967"W	1814.72	39.605	6.52	6.00	-2.57
7000.00	90.490	336.050	6241.51	1178.43	1485.83	1120.50	1753976.62	14557394.95	40°05'00.565"N	80°35'38.430"W	1860.97	37.021	5.54	4.66	-2.99
7096.00	91.110	332.100	6240.16	1272.23	1572.15	1078.54	1753934.68	14557481.23	40°05'01.420"N	80°35'38.964"W	1906.54	34.451	4.16	0.65	-4.11
7192.00	90.770	330.750	6238.59	1364.99	1656.44	1032.63	1753888.78	14557565.49	40°05'02.255"N	80°35'39.550"W	1951.95	31.940	1.45	-0.35	-1.41
7289.00	90.740	330.930	6237.31	1458.47	1741.14	985.37	1753841.54	14557650.15	40°05'03.094"N	80°35'40.153"W	2000.63	29.507	0.19	-0.03	0.19
7385.00	90.740	333.500	6236.07	1551.56	1826.06	940.63	1753796.82	14557735.04	40°05'03.935"N	80°35'40.724"W	2054.09	27.254	2.68	0.00	2.68
7482.00	90.800	334.100	6234.77	1646.25	1913.08	897.81	1753754.01	14557822.03	40°05'04.797"N	80°35'41.270"W	2113.28	25.141	0.62	0.06	0.62
7577.00	90.460	336.310	6233.72	1739.46	1999.31	857.97	1753714.19	14557908.23	40°05'05.651"N	80°35'41.777"W	2175.63	23.226	2.35	-0.36	2.33
7674.00	90.620	337.850	6232.81	1835.20	2088.65	820.20	1753676.43	14557997.53	40°05'06.536"N	80°35'42.258"W	2243.92	21.440	1.60	0.16	1.59
7770.00	91.200	336.540	6231.28	1929.97	2177.13	783.00	1753639.24	14558085.98	40°05'07.412"N	80°35'42.731"W	2313.65	19.781	1.49	0.60	-1.36
7865.00	90.580	331.120	6229.81	2022.68	2262.35	741.12	1753597.38	14558171.16	40°05'08.256"N	80°35'43.265"W	2380.65	18.138	5.74	-0.65	-5.71

RECEIVED
Office of Oil and Gas
JAN 31 2019
Department of
Natural Resources
Office of Oil and Gas



Actual Wellpath Report

OCC A OHI 205H AWP Proj: 15070'MD
Page 5 of 9



REFERENCE WELLPATH IDENTIFICATION			
Operator	SOUTHWESTERN ENERGY	Slot	Slot 205H
Area	Ohio County, WV	Well	OCC A OHI 205H
Field	Ohio	Wellbore	OCC A OHI 205H AWB
Facility	OCC A OHI Pad		

WELLPATH DATA (166 stations)															
MD [ft]	Inclination [°]	Azimuth [°]	TVD [ft]	Vert Sect [ft]	North [ft]	East [ft]	Grid East [US ft]	Grid North [US ft]	Latitude	Longitude	Closure Dist [ft]	Closure Dir [°]	DLS [°/100ft]	Build Rate [°/100ft]	Turn Rate [°/100ft]
7962.00	90.340	330.070	6229.03	2116.05	2346.85	693.50	1753549.78	14558255.63	40°05'09.093"N	80°35'43.873"W	2447.17	16.462	1.11	-0.25	-1.08
8057.00	91.290	329.740	6227.68	2207.17	2429.03	645.87	1753502.16	14558337.78	40°05'09.907"N	80°35'44.481"W	2513.43	14.890	1.06	1.00	-0.35
8153.00	90.710	328.350	6226.00	2298.83	2511.35	596.49	1753452.81	14558420.06	40°05'10.723"N	80°35'45.111"W	2581.21	13.361	1.57	-0.60	-1.45
8250.00	90.430	337.270	6225.03	2393.05	2597.54	552.22	1753408.55	14558506.22	40°05'11.576"N	80°35'45.676"W	2655.59	12.002	9.20	-0.29	9.20
8346.00	90.520	343.710	6224.24	2488.50	2687.97	520.18	1753376.52	14558596.62	40°05'12.472"N	80°35'46.083"W	2737.84	10.952	6.71	0.09	6.71
8442.00	89.850	345.000	6223.93	2584.44	2780.41	494.29	1753350.65	14558689.03	40°05'13.386"N	80°35'46.410"W	2824.01	10.080	1.51	-0.70	1.34
8537.00	90.460	348.640	6223.67	2679.42	2872.89	472.63	1753329.00	14558781.47	40°05'14.301"N	80°35'46.684"W	2911.51	9.342	3.88	0.64	3.83
8633.00	89.600	349.720	6223.62	2775.30	2967.19	454.61	1753310.98	14558875.73	40°05'15.234"N	80°35'46.910"W	3001.81	8.711	1.44	-0.90	1.13
8730.00	88.990	346.980	6224.81	2872.22	3062.17	435.02	1753291.41	14558970.67	40°05'16.173"N	80°35'47.156"W	3092.92	8.086	2.89	-0.63	-2.82
8826.00	90.060	341.350	6225.61	2968.11	3154.49	408.84	1753265.23	14559062.95	40°05'17.087"N	80°35'47.488"W	3180.87	7.385	5.97	1.11	-5.86
8922.00	90.280	332.660	6225.33	3062.75	3242.77	371.37	1753227.78	14559151.21	40°05'17.961"N	80°35'47.965"W	3263.97	6.533	9.05	0.23	-9.05
9018.00	90.220	332.560	6224.91	3156.02	3328.01	327.21	1753183.63	14559236.41	40°05'18.805"N	80°35'48.528"W	3344.06	5.615	0.12	-0.06	-0.10
9114.00	90.000	334.000	6224.72	3249.55	3413.76	284.05	1753140.49	14559322.12	40°05'19.654"N	80°35'49.078"W	3425.55	4.756	1.52	-0.23	1.50
9210.00	90.150	335.320	6224.60	3343.57	3500.52	242.96	1753099.42	14559408.85	40°05'20.514"N	80°35'49.602"W	3508.94	3.970	1.38	0.16	1.37
9305.00	89.880	334.030	6224.57	3436.61	3586.38	202.33	1753058.80	14559494.68	40°05'21.364"N	80°35'50.120"W	3592.09	3.229	1.39	-0.28	-1.36
9402.00	90.220	332.240	6224.49	3531.06	3672.91	158.49	1753014.98	14559581.18	40°05'22.221"N	80°35'50.679"W	3676.33	2.471	1.88	0.35	-1.85
9497.00	89.970	330.450	6224.33	3622.83	3756.27	112.94	1752969.45	14559664.51	40°05'23.047"N	80°35'51.260"W	3757.97	1.722	1.90	-0.26	-1.88
9594.00	90.280	331.110	6224.12	3716.29	3840.93	65.59	1752922.11	14559749.13	40°05'23.886"N	80°35'51.864"W	3841.49	0.978	0.75	0.32	0.68
9689.00	90.120	332.430	6223.79	3808.24	3924.63	20.65	1752877.20	14559832.80	40°05'24.715"N	80°35'52.438"W	3924.68	0.302	1.40	-0.17	1.39
9785.00	90.650	335.700	6223.14	3902.04	4010.95	-21.32	1752835.23	14559919.08	40°05'25.570"N	80°35'52.973"W	4011.00	359.695	3.45	0.55	3.41
9881.00	90.520	337.970	6222.16	3996.72	4099.20	-59.08	1752797.49	14560007.30	40°05'26.443"N	80°35'53.453"W	4099.62	359.174	2.37	-0.14	2.36
9978.00	90.920	338.870	6220.94	4092.80	4189.39	-94.76	1752761.83	14560097.45	40°05'27.336"N	80°35'53.907"W	4190.46	358.704	1.02	0.41	0.93
10074.00	90.620	337.440	6219.65	4187.81	4278.48	-130.48	1752726.13	14560186.52	40°05'28.218"N	80°35'54.362"W	4280.47	358.253	1.52	-0.31	-1.49
10171.00	90.740	337.840	6218.50	4283.70	4368.18	-167.37	1752689.24	14560276.18	40°05'29.106"N	80°35'54.831"W	4371.39	357.806	0.43	0.12	0.41
10267.00	90.770	337.800	6217.24	4378.64	4457.07	-203.61	1752653.02	14560365.04	40°05'29.986"N	80°35'55.292"W	4461.72	357.384	0.05	0.03	-0.04
10363.00	90.770	335.510	6215.95	4473.26	4545.20	-241.65	1752615.00	14560453.13	40°05'30.859"N	80°35'55.776"W	4551.62	356.957	2.39	0.00	-2.39
10459.00	90.520	332.460	6214.86	4567.03	4631.46	-283.75	1752572.91	14560539.35	40°05'31.713"N	80°35'56.313"W	4640.14	356.494	3.19	-0.26	-3.18
10555.00	90.800	329.510	6213.76	4659.60	4715.39	-330.30	1752526.38	14560623.26	40°05'32.545"N	80°35'56.907"W	4726.95	355.993	3.09	0.29	-3.07
10651.00	90.770	330.430	6212.44	4751.72	4798.50	-378.34	1752478.36	14560706.33	40°05'33.368"N	80°35'57.521"W	4813.39	355.492	0.96	-0.03	0.96
10748.00	90.740	332.440	6211.16	4845.45	4883.68	-424.71	1752432.00	14560791.48	40°05'34.212"N	80°35'58.112"W	4902.11	355.030	2.07	-0.03	2.07



Actual Wellpath Report

OCC A OHI 205H AWP Proj: 15070'MD

Page 6 of 9



REFERENCE WELLPATH IDENTIFICATION

Operator	SOUTHWESTERN ENERGY	Slot	Slot 205H
Area	Ohio County, WV	Well	OCC A OHI 205H
Field	Ohio	Wellbore	OCC A OHI 205H AWB
Facility	OCC A OHI Pad		

WELLPATH DATA (166 stations)

MD [ft]	Inclination [°]	Azimuth [°]	TVD [ft]	Vert Sect [ft]	North [ft]	East [ft]	Grid East [US ft]	Grid North [US ft]	Latitude	Longitude	Closure Dist [ft]	Closure Dir [°]	DLS [°/100ft]	Build Rate [°/100ft]	Turn Rate [°/100ft]
10844.00	90.550	335.830	6210.08	4939.27	4970.04	-466.59	1752390.14	14560877.81	40°05'35.067"N	80°35'58.646"W	4991.90	354.637	3.54	-0.20	3.53
10940.00	90.430	338.550	6209.26	5034.05	5058.52	-503.80	1752352.95	14560966.25	40°05'35.943"N	80°35'59.120"W	5083.55	354.312	2.84	-0.12	2.83
11036.00	90.620	339.200	6208.38	5129.24	5148.07	-538.40	1752318.36	14561055.76	40°05'36.830"N	80°35'59.560"W	5176.15	354.030	0.71	0.20	0.68
11132.00	90.580	334.160	6207.38	5223.85	5236.19	-576.38	1752280.39	14561143.85	40°05'37.702"N	80°36'00.043"W	5267.82	353.718	5.25	-0.04	-5.25
11228.00	90.770	334.920	6206.25	5317.82	5322.86	-617.65	1752239.14	14561230.49	40°05'38.561"N	80°36'00.569"W	5358.58	353.381	0.82	0.20	0.79
11324.00	90.580	337.560	6205.11	5412.33	5410.71	-656.32	1752200.48	14561318.31	40°05'39.430"N	80°36'01.062"W	5450.37	353.084	2.76	-0.20	2.75
11421.00	90.710	341.860	6204.02	5508.66	5501.67	-689.95	1752166.87	14561409.22	40°05'40.331"N	80°36'01.489"W	5544.76	352.852	4.43	0.13	4.43
11517.00	90.740	343.830	6202.81	5604.47	5593.38	-718.26	1752138.57	14561500.91	40°05'41.238"N	80°36'01.848"W	5639.31	352.683	2.05	0.03	2.05
11613.00	90.520	343.170	6201.75	5700.35	5685.42	-745.53	1752111.31	14561592.91	40°05'42.149"N	80°36'02.194"W	5734.10	352.529	0.72	-0.23	-0.69
11710.00	90.740	342.430	6200.69	5797.16	5778.08	-774.21	1752082.64	14561685.53	40°05'43.066"N	80°36'02.558"W	5829.72	352.368	0.80	0.23	-0.76
11806.00	90.220	339.630	6199.88	5892.74	5868.85	-805.41	1752051.45	14561776.27	40°05'43.964"N	80°36'02.954"W	5923.86	352.186	2.97	-0.54	-2.92
11902.00	90.860	333.660	6198.98	5987.33	5956.94	-843.45	1752013.43	14561864.33	40°05'44.837"N	80°36'03.438"W	6016.36	351.941	6.25	0.67	-6.22
11998.00	89.910	329.690	6198.33	6080.19	6041.43	-888.99	1751967.91	14561948.78	40°05'45.674"N	80°36'04.019"W	6106.49	351.629	4.25	-0.99	-4.14
12094.00	89.780	331.610	6198.59	6172.62	6125.10	-936.04	1751920.87	14562032.42	40°05'46.502"N	80°36'04.620"W	6196.21	351.311	2.00	-0.14	2.00
12190.00	90.150	334.880	6198.65	6266.12	6210.81	-979.25	1751877.68	14562118.10	40°05'47.351"N	80°36'05.171"W	6287.54	351.040	3.43	0.39	3.41
12287.00	89.880	336.090	6198.62	6361.40	6299.07	-1019.50	1751837.45	14562206.32	40°05'48.225"N	80°36'05.684"W	6381.04	350.806	1.28	-0.28	1.25
12383.00	89.820	334.940	6198.87	6455.70	6386.43	-1059.28	1751797.68	14562293.65	40°05'49.090"N	80°36'06.191"W	6473.69	350.582	1.20	-0.06	-1.20
12479.00	90.000	333.580	6199.03	6549.58	6472.91	-1100.97	1751756.00	14562380.09	40°05'49.947"N	80°36'06.722"W	6565.87	350.347	1.43	0.19	-1.42
12575.00	89.750	331.660	6199.23	6642.85	6558.15	-1145.12	1751711.87	14562465.29	40°05'50.791"N	80°36'07.285"W	6657.37	350.095	2.02	-0.26	-2.00
12671.00	90.550	333.820	6198.98	6736.16	6643.48	-1189.09	1751667.92	14562550.59	40°05'51.636"N	80°36'07.846"W	6749.05	349.852	2.40	0.83	2.25
12767.00	90.340	332.090	6198.24	6829.56	6728.97	-1232.74	1751624.29	14562636.06	40°05'52.483"N	80°36'08.403"W	6840.96	349.619	1.82	-0.22	-1.80
12863.00	90.460	333.600	6197.57	6922.91	6814.39	-1276.55	1751580.50	14562721.44	40°05'53.329"N	80°36'08.962"W	6932.93	349.390	1.58	0.13	1.57
12960.00	90.520	333.530	6196.74	7017.52	6901.24	-1319.73	1751537.33	14562808.26	40°05'54.189"N	80°36'09.512"W	7026.30	349.174	0.10	0.06	-0.07
13056.00	90.610	333.370	6195.79	7111.11	6987.12	-1362.64	1751494.44	14562894.10	40°05'55.040"N	80°36'10.060"W	7118.75	348.965	0.19	0.09	-0.17
13153.00	90.490	335.220	6194.86	7205.97	7074.51	-1404.71	1751452.39	14562981.46	40°05'55.905"N	80°36'10.596"W	7212.62	348.769	1.91	-0.12	1.91
13249.00	90.650	336.290	6193.90	7300.34	7162.04	-1444.12	1751412.99	14563068.95	40°05'56.772"N	80°36'11.098"W	7306.18	348.600	1.13	0.17	1.11
13345.00	90.740	333.590	6192.74	7394.44	7248.98	-1484.78	1751372.35	14563155.86	40°05'57.633"N	80°36'11.616"W	7399.48	348.424	2.81	0.09	-2.81
13441.00	91.110	334.570	6191.19	7488.25	7335.31	-1526.74	1751330.40	14563242.16	40°05'58.488"N	80°36'12.151"W	7492.51	348.243	1.09	0.39	1.02
13538.00	90.620	337.360	6189.73	7583.85	7423.88	-1566.24	1751290.92	14563330.70	40°05'59.365"N	80°36'12.655"W	7587.30	348.087	2.92	-0.51	2.88
13633.00	90.800	338.940	6188.55	7677.88	7512.05	-1601.59	1751255.58	14563418.83	40°06'00.238"N	80°36'13.104"W	7680.88	347.965	1.67	0.19	1.66

RECEIVED
Office of Oil and Gas
JAN 31 2019
Department of Environmental Protection

REFERENCE WELLPATH IDENTIFICATION

Operator	SOUTHWESTERN ENERGY	Slot	Slot 205H
Area	Ohio County, WV	Well	OCC A OHI 205H
Field	Ohio	Wellbore	OCC A OHI 205H AWB
Facility	OCC A OHI Pad		

WELLPATH DATA (166 stations)

MD [ft]	Inclination [°]	Azimuth [°]	TVD [ft]	Vert Sect [ft]	North [ft]	East [ft]	Grid East [US ft]	Grid North [US ft]	Latitude	Longitude	Closure Dist [ft]	Closure Dir [°]	DLS [°/100ft]	Build Rate [°/100ft]	Turn Rate [°/100ft]
13730.00	91.510	340.560	6186.59	7774.02	7603.03	-1635.15	1751222.03	14563509.78	40°06'01.138"N	80°36'13.531"W	7776.88	347.862	1.82	0.73	1.67
13826.00	91.940	341.370	6183.70	7869.56	7693.74	-1666.45	1751190.75	14563600.45	40°06'02.036"N	80°36'13.929"W	7872.15	347.779	0.95	0.45	0.84
13922.00	91.880	340.660	6180.50	7965.10	7784.47	-1697.66	1751159.54	14563691.14	40°06'02.934"N	80°36'14.325"W	7967.43	347.697	0.74	-0.06	-0.74
14018.00	91.880	338.560	6177.35	8060.39	7874.40	-1731.09	1751126.13	14563781.04	40°06'03.824"N	80°36'14.750"W	8062.43	347.601	2.19	0.00	-2.19
14115.00	90.980	339.000	6174.93	8156.52	7964.79	-1766.19	1751091.05	14563871.40	40°06'04.719"N	80°36'15.197"W	8158.27	347.497	1.03	-0.93	0.45
14211.00	91.230	339.730	6173.08	8251.80	8054.62	-1800.01	1751057.23	14563961.19	40°06'05.608"N	80°36'15.627"W	8253.30	347.403	0.80	0.26	0.76
14306.00	90.990	339.200	6171.24	8346.10	8143.56	-1833.33	1751023.93	14564050.10	40°06'06.489"N	80°36'16.050"W	8347.38	347.313	0.61	-0.25	-0.56
14403.00	91.170	336.120	6169.41	8441.97	8233.26	-1870.19	1750987.08	14564139.76	40°06'07.377"N	80°36'16.520"W	8442.99	347.202	3.18	0.19	-3.18
14499.00	91.080	334.330	6167.53	8536.16	8320.40	-1910.41	1750946.88	14564226.87	40°06'08.240"N	80°36'17.032"W	8536.90	347.069	1.87	-0.09	-1.86
14590.00	91.050	335.700	6165.84	8625.38	8402.87	-1948.84	1750908.47	14564309.30	40°06'09.056"N	80°36'17.522"W	8625.90	346.943	1.51	-0.03	1.51
14682.00	91.020	336.460	6164.17	8715.90	8486.95	-1986.14	1750871.18	14564393.35	40°06'09.889"N	80°36'17.997"W	8716.25	346.829	0.83	-0.03	0.83
14772.00	91.630	337.130	6162.09	8804.63	8569.65	-2021.59	1750835.75	14564476.02	40°06'10.707"N	80°36'18.449"W	8804.87	346.727	1.01	0.68	0.74
14864.00	91.510	338.020	6159.57	8895.53	8654.66	-2056.67	1750800.68	14564560.99	40°06'11.549"N	80°36'18.895"W	8895.67	346.632	0.98	-0.13	0.97
14954.00	91.290	339.280	6157.37	8984.70	8738.46	-2089.42	1750767.93	14564644.76	40°06'12.379"N	80°36'19.312"W	8984.78	346.553	1.42	-0.24	1.40
15045.00	91.660	339.720	6155.03	9075.03	8823.66	-2121.28	1750736.09	14564729.93	40°06'13.222"N	80°36'19.717"W	9075.07	346.482	0.63	0.41	0.48
15070.00	91.660	339.720	6154.31	9099.85	8847.10	-2129.94	1750727.43	14564753.37	40°06'13.454"N	80°36'19.827"W	9099.89	346.464	0.00	0.00	0.00

HOLE & CASING SECTIONS - Ref Wellbore: OCC A OHI 205H AWB Ref Wellpath: OCC A OHI 205H AWP Proj: 15070'MD

String/Diameter	Start MD [ft]	End MD [ft]	Interval [ft]	Start TVD [ft]	End TVD [ft]	Start N/S [ft]	Start E/W [ft]	End N/S [ft]	End E/W [ft]
17.5in Open Hole	26.00	537.00	511.00	26.00	536.99	0.00	0.00	-1.99	1.15
13.375in Casing	26.00	537.00	511.00	26.00	536.99	0.00	0.00	-1.99	1.15
12.25in Open Hole	537.00	1856.00	1319.00	536.99	1838.64	-1.99	1.15	79.86	172.58
9.625in Casing	26.00	1856.00	1830.00	26.00	1838.64	0.00	0.00	79.86	172.58
8.75in Open Hole	1856.00	4891.00	3035.00	1838.64	4720.47	79.86	172.58	475.07	1030.07
8.5in Open Hole	4891.00	15070.00	10179.00	4720.47	6154.31	475.07	1030.07	8847.10	-2129.94

RECEIVED
 Office of Oil and Gas
 JAN 31 2019
 WV Department of Environmental Protection

REFERENCE WELLPATH IDENTIFICATION			
Operator	SOUTHWESTERN ENERGY	Slot	Slot 205H
Area	Ohio County, WV	Well	OCC A OHI 205H
Field	Ohio	Wellbore	OCC A OHI 205H AWB
Facility	OCC A OHI Pad		

TARGETS								
Name	TVD [ft]	North [ft]	East [ft]	Grid East [US ft]	Grid North [US ft]	Latitude	Longitude	Shape
OCC A OHI 205H BHL Rev-1	6131.00	8854.46	-2157.31	1750700.08	14564760.72	40°06'13.528"N	80°36'20.179"W	point
OCC A OHI 205H LP Rev-3	6233.00	1293.02	1183.24	1754039.34	14557202.21	40°04'58.657"N	80°35'37.634"W	point
OCC A OHI 205H LP Rev-4	6233.00	1385.30	1142.50	1753998.61	14557294.45	40°04'59.571"N	80°35'38.153"W	point

WELLPATH COMPOSITION - Ref Wellbore: OCC A OHI 205H AWB Ref Wellpath: OCC A OHI 205H AWP Proj: 15070'MD				
Start MD [ft]	End MD [ft]	Positional Uncertainty Model	Log Name/Comment	Wellbore
26.00	4810.00	ISCWSA MWD, Rev. 4 (Standard)	01_MWD <8-3/4"> (225'-4810')	OCC A OHI 205H AWB
4810.00	15045.00	BHI AutoTrak Curve (Short)	02_BH AT Curve <8-1/2"> (4810')(4863'-15045')	OCC A OHI 205H AWB
15045.00	15070.00	Blind Drilling (std)	Projection to bit	OCC A OHI 205H AWB

RECEIVED
 Office of Oil and Gas
 JAN 31 2019
 WV Department of
 Environmental Protection

REFERENCE WELLPATH IDENTIFICATION			
Operator	SOUTHWESTERN ENERGY	Slot	Slot 205H
Area	Ohio County, WV	Well	OCC A OHI 205H
Field	Ohio	Wellbore	OCC A OHI 205H AWB
Facility	OCC A OHI Pad		

COMMENTS
<p>Wellpath general comments API: 47-069-00241-0000 Rig: SDC 41 BH Job #: 9160206 Duration: 05/09/2018 - 05/12/2018</p>